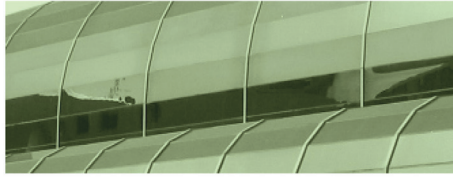




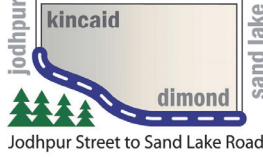
MUNICIPALITY OF  
**ANCHORAGE**



Project Management and Engineering



**W Dimond Blvd Upgrade**



**August 28, 2013**

**Open House**

**Dimond High School**

# FACT SHEET

**Project Website: [www.westdimondblvd.com](http://www.westdimondblvd.com)**

## Project Description

The Municipality of Anchorage (MOA) is upgrading West Dimond Boulevard. Phase I, from Westpark Drive to Sand Lake Road, will improve the drainage, pavement, intersection operations, and pedestrian, bicyclist and driver safety through non-motorized facilities and lighting. Final design and construction of Phase II will not advance until full construction funding becomes available. The project began in 2005 with problem identification through extensive community input. Since 2007, the project has been on hold pending funding. The planning effort is starting up again, in two Phases, following a Context Sensitive Solutions (CSS) process.

## Existing Roadway Information:

- Posted speed 25 MPH at Jodhpur/W Dimond curve; 45 MPH along West Dimond Blvd
- Average Annual Daily Traffic (AADT): 1400
- Publicly-owned right-of-way: approx. 100 feet
- Jodhpur St to Westpark Dr: two 11-foot lanes, no shoulders; Westpark Dr: to Sand Lake Rd: two 12-foot lanes, 4 ft. shoulders
- Collector roadway
- No pedestrian/bicycle facilities
- Drainage ditches; no curb & gutter; no storm drain
- Utilities: overhead telephone & electric lines; underground gas line
- Non-continuous street lighting
- No public water or sewer

## Funding:

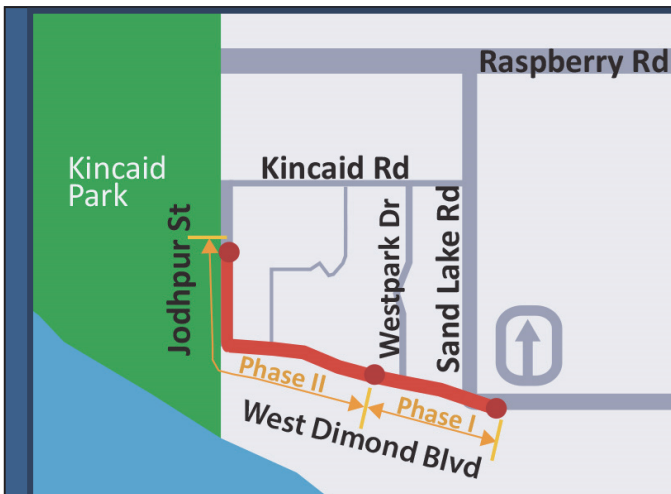
- \$7.5 million state grant for Phase I design, easement acquisition, utility relocation and construction

## Project Schedule:

- Phase I—Westpark Drive to Sand Lake Road: Construction in 2014
- Phase II—Jodhpur Street to Westpark Drive: dependent on future funding

## Stay Informed:

- Submit comments and get project updates at [www.westdimondblvd.com](http://www.westdimondblvd.com)
- Sign up for e-newsletters/notifications at [comments@rmconsult.com](mailto:comments@rmconsult.com)



## Municipality of Anchorage

John Smith, P.E. , Project Manager

Julie Makela, P.E. , Project Administrator

## R&M Consultants, Inc.

Tim Grier, P.E. , Project Manager

Marc Frutiger, P.E. , Project Engineer

Van Le, Public Involvement Coordinator

646-9659 or email at [comments@rmconsult.com](mailto:comments@rmconsult.com)



STATION #1  
Project Background & History



STATION #2  
Public Involvement Summary  
Context Sensitive Solutions (CSS)  
Evaluation Criteria



STATION #3  
Virtual Site Walk



STATION #4  
Design Study  
Recommended Alternatives



STATION #5  
AWWU Info



STATION #6  
Submit Comments