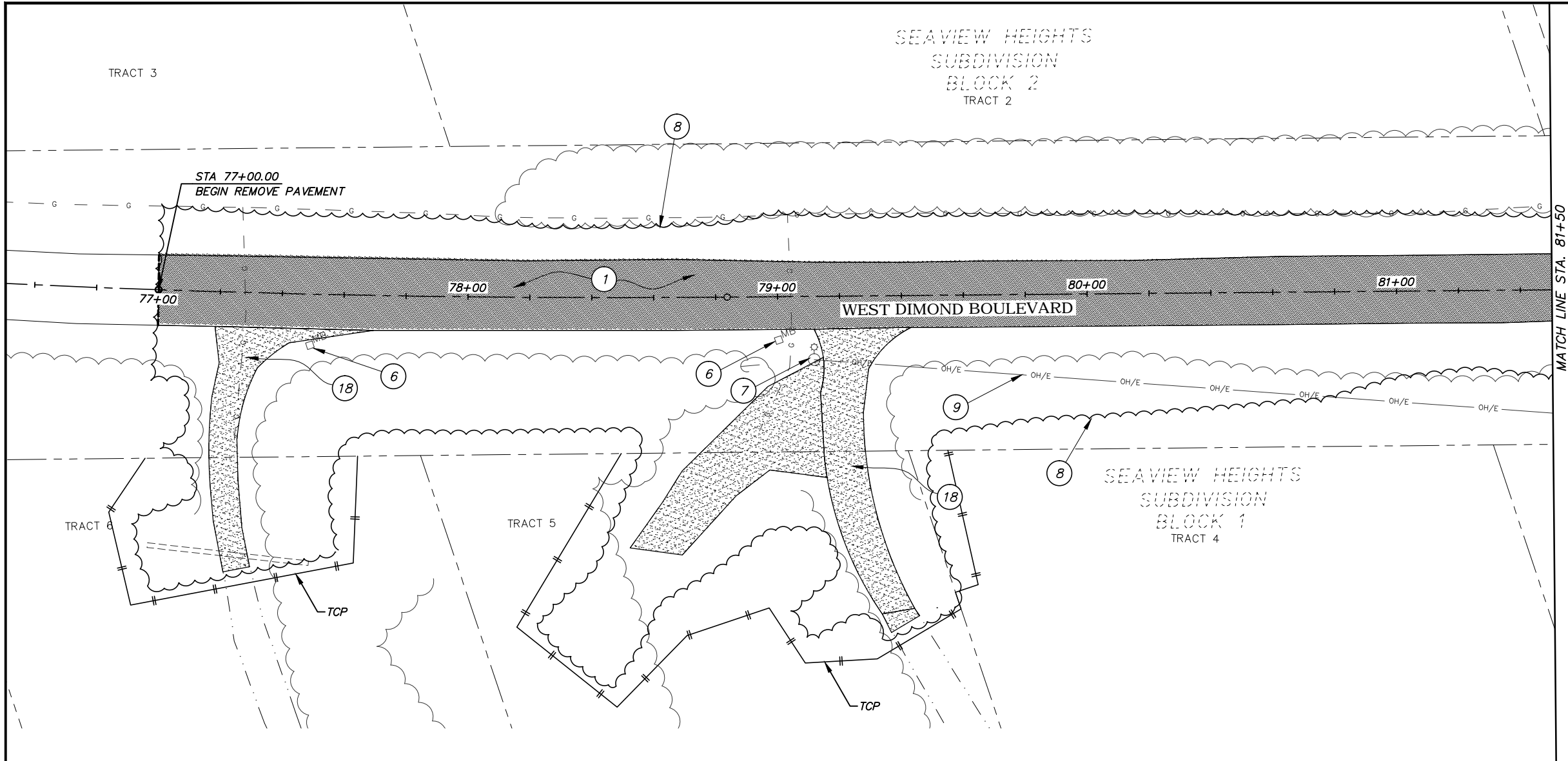


Plotted: 4/11/2014 7:33 AM File Location: Z:\project\1317.01- West Dimond Blvd\Engineering\Acad\1317-C-Demo Plan.dwg



MATCH LINE STA. 81+50

- REMOVE PAVEMENT
REMOVE CURB AND GUTTER
- - - - - REMOVE PIPE
- - - - - REMOVE FENCE
REMOVE GRAVEL DRIVEWAY
- - - - - SAW CUT LINE
EXISTING EDGE OF TREES
CLEARING AND GRUBBING LIMITS

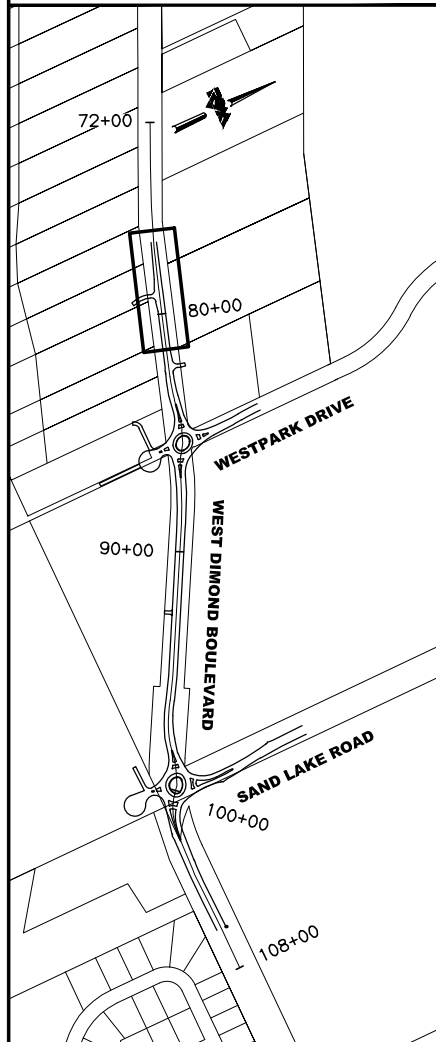
LEGEND

- | | |
|---|--|
| 1 REMOVE PAVEMENT | 10 REMOVE BOULDERS |
| 2 REMOVE CURB AND GUTTER | 11 REMOVE RETAINING WALL |
| 3 REMOVE PIPE | 12 ADJUST MANHOLE TO FINISHED GRADE |
| 4 REMOVE FENCE | 13 REMOVE GATE |
| 5 REMOVE SIGNS | 14 ADJUST VALVE BOX TO FINISHED GRADE |
| 6 REMOVE MAILBOX | 15 RELOCATE NATURAL GAS RISER (BY OTHERS) |
| 7 REMOVE LUMINARE (BY OTHERS) | 16 RELOCATE ELECTRICAL TRANSFORMER (BY OTHERS) |
| 8 CLEARING AND GRUBBING | 17 OVERHEAD ELEC TO BE BURIED (BY OTHERS) |
| 9 OVERHEAD ELEC TO BE REMOVED (BY OTHERS) | 18 REMOVE GRAVEL DRIVEWAY |



BEFORE YOU DIG
CALL FOR FREE
UNDERGROUND
LOCATION

LOCATE CALL CENTER OF ALASKA
STATEWIDE 800-478-3121 WILL
NOTIFY SUBSCRIBED UTILITIES ONLY.
OTHER UTILITIES NEED TO BE
CONTACTED INDIVIDUALLY.



KEYMAP

65% DESIGN
APRIL 2014



FIELD BOOKS	BM NO.	LOCATION	ELEV.	DATA	DRAWN BY	CHECKED BY	DATA	DRAWN BY	CHECKED BY	REV	DATE	DESCRIPTION	BY	REV	DATE	DESCRIPTION	BY
DESIGN				BASE			TELEPHONE										
STAKING				TOPOGRAPHY			ELECTRIC										
ASBUILT				PROFILE			CABLE TV										
CONTRACTOR				SANITARY SEWER			DESIGN										
INSPECTOR				STORM SEWER			QUANTITIES										
				WATER			MUN. FINAL CHK.										
				GAS													
CONSTRUCTION RECORD				VERTICAL DATUM			PLAN CHECK										



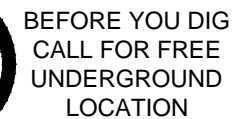
R&M Consultants, Inc.
9101 Vanguard Drive
Anchorage, Alaska 99507
907 522 1707 voice
907 522 3404 fax
www.rmconsult.com



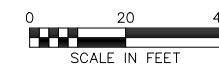
PROJECT MANAGEMENT AND ENGINEERING DIVISION

05-05 WEST DIMOND BOULEVARD UPGRADE
PHASE I: WESTPARK DRIVE TO SAND LAKE ROAD
DEMOLITION PLAN
WEST DIMOND BLVD - BOP TO STA 81+50

SCALE DATE 4/11/14 GRID 2323 2324
ACCT. NO. 2423 2424 SHEET 15 of 76



65% DESIGN
APRIL 2014



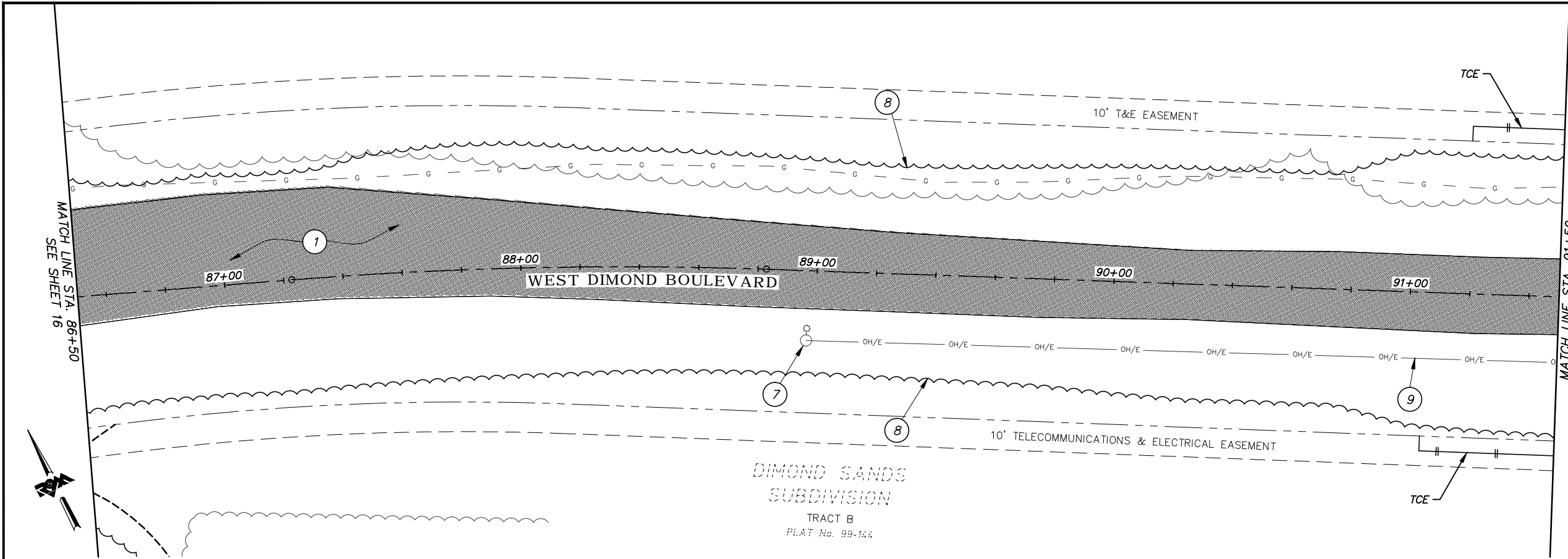
R&M Consultants, Inc.
9101 Vanguard Drive
Anchorage, Alaska 99507
907 522 1707 voice
907 522 3404 fax
www.rmconsult.com



05-05 WEST DIMOND BOULEVARD UPGRADE
PHASE I: WESTPARK DRIVE TO SAND LAKE ROAD
DEMOLITION PLAN
WEST DIMOND BLVD - STA 81+50 TO STA 86+50

SCALE	DATE	4/11/14	GRID	2323 2324 2423 2424	SHEET 16 of 76
	ACCT. NO.				

Plotted: 4/11/2014 7:33 AM File Location: Z:\project\1317.01- West Dimond Blvd\Engineering\Acad\1317-C-Demo Plan.dwg



- REMOVE PAVEMENT
- REMOVE CURB AND GUTTER
- REMOVE PIPE
- REMOVE FENCE
- REMOVE GRAVEL DRIVEWAY
- SAW CUT LINE
- EXISTING EDGE OF TREES
- CLEARING AND GRUBBING LIMITS

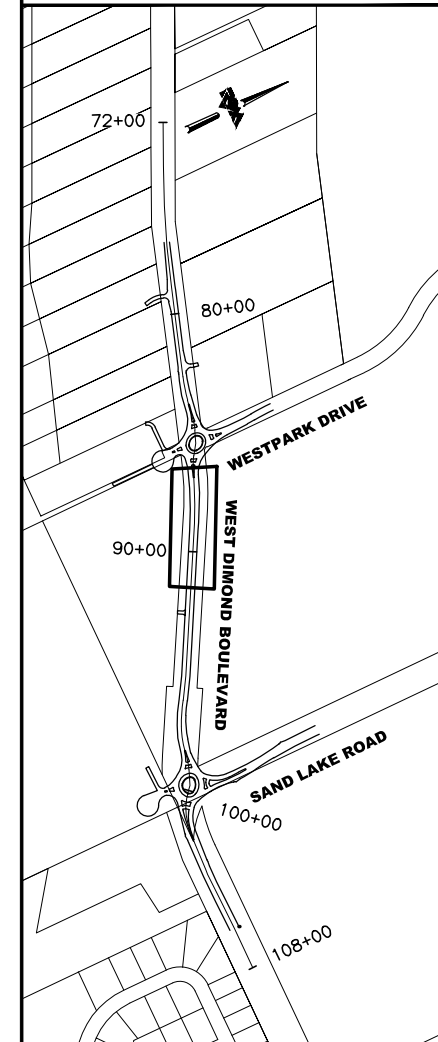
LEGEND

- 1 REMOVE PAVEMENT
- 2 REMOVE CURB AND GUTTER
- 3 REMOVE PIPE
- 4 REMOVE FENCE
- 5 REMOVE SIGNS
- 6 REMOVE MAILBOX
- 7 REMOVE LUMINARE (BY OTHERS)
- 8 CLEARING AND GRUBBING
- 9 OVERHEAD ELEC TO BE REMOVED (BY OTHERS)
- 10 REMOVE BOULDERS
- 11 REMOVE RETAINING WALL
- 12 ADJUST MANHOLE TO FINISHED GRADE
- 13 REMOVE GATE
- 14 ADJUST VALVE BOX TO FINISHED GRADE
- 15 RELOCATE NATURAL GAS RISER (BY OTHERS)
- 16 RELOCATE ELECTRICAL TRANSFORMER (BY OTHERS)
- 17 OVERHEAD ELEC TO BE BURIED (BY OTHERS)
- 18 REMOVE GRAVEL DRIVEWAY



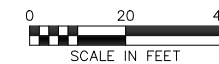
BEFORE YOU DIG
CALL FOR FREE
UNDERGROUND
LOCATION

LOCATE CALL CENTER OF ALASKA
STATEWIDE 800-478-3121 WILL
NOTIFY SUBSCRIBED UTILITIES ONLY.
OTHER UTILITIES NEED TO BE
CONTACTED INDIVIDUALLY.



KEYMAP

65% DESIGN
APRIL 2014



FIELD BOOKS	BM NO.	LOCATION	ELEV.	DATA	DRAWN BY	CHECKED BY	DATA	DRAWN BY	CHECKED BY	REV	DATE	DESCRIPTION	BY	REV	DATE	DESCRIPTION	BY
DESIGN				BASE			TELEPHONE										
STAKING				TOPOGRAPHY			ELECTRIC										
ASBUILT				PROFILE			CABLE TV										
CONTRACTOR				SANITARY SEWER			DESIGN										
INSPECTOR				STORM SEWER			QUANTITIES										
				WATER			MUN. FINAL CHK.										
				GAS													
CONSTRUCTION RECORD				VERTICAL DATUM			PLAN CHECK										

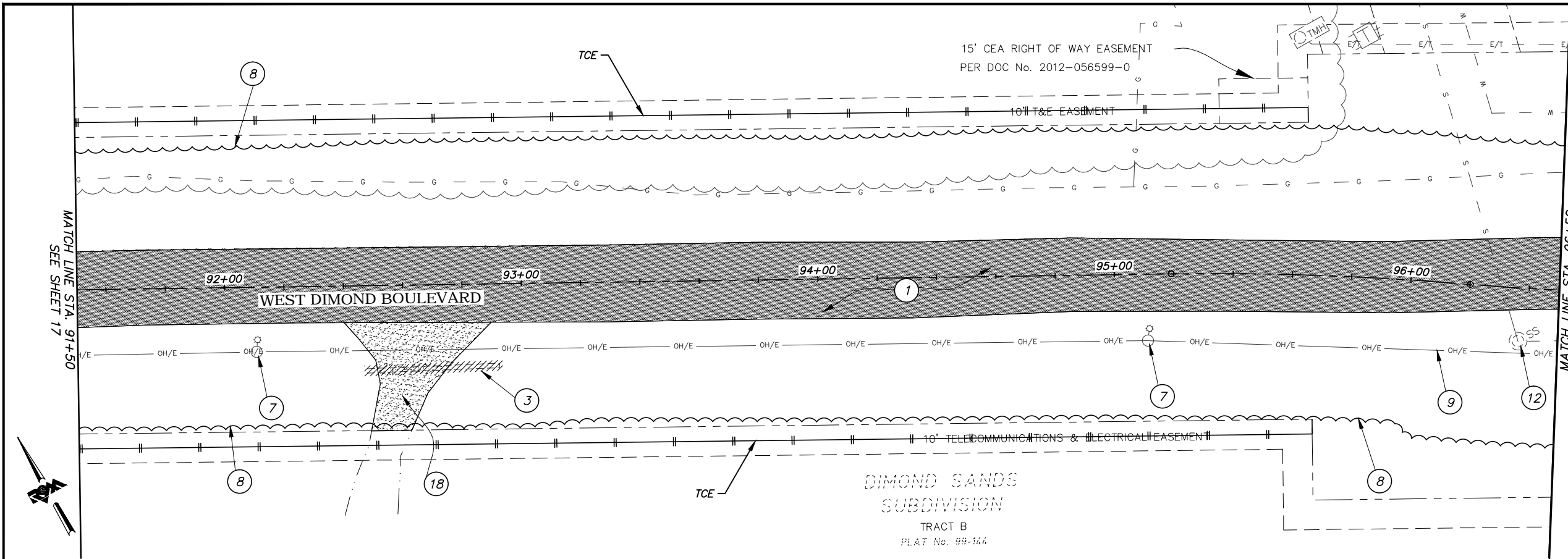
R&M
R&M Consultants, Inc.
9101 Vanguard Drive
Anchorage, Alaska 99507
907 522 1707 voice
907 522 3404 fax
www.rmconsult.com



PROJECT MANAGEMENT AND
ENGINEERING DIVISION

05-05	WEST DIMOND BOULEVARD UPGRADE PHASE I: WESTPARK DRIVE TO SAND LAKE ROAD DEMOLITION PLAN WEST DIMOND BLVD - STA 86+50 TO STA 91+50
SCALE	DATE 4/11/14 GRID 2323 2324 ACCT. NO. 2423 2424
	SHEET 17 of 76

Plotted: 4/11/2014 7:33 AM File Location: Z:\project\1317.01- West Dimond Blvd\Engineering\Acad\1317-C-Demo Plan.dwg



- REMOVE PAVEMENT
- REMOVE CURB AND GUTTER
- REMOVE PIPE
- REMOVE FENCE
- REMOVE GRAVEL DRIVEWAY
- SAW CUT LINE
- EXISTING EDGE OF TREES
- CLEARING AND GRUBBING LIMITS

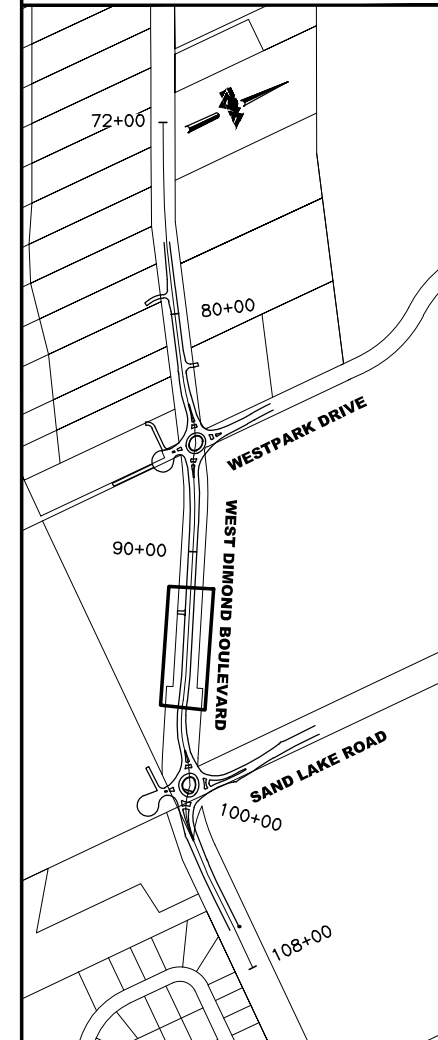
LEGEND

- 1 REMOVE PAVEMENT
- 2 REMOVE CURB AND GUTTER
- 3 REMOVE PIPE
- 4 REMOVE FENCE
- 5 REMOVE SIGNS
- 6 REMOVE MAILBOX
- 7 REMOVE LUMINARE (BY OTHERS)
- 8 CLEARING AND GRUBBING
- 9 OVERHEAD ELEC TO BE REMOVED (BY OTHERS)
- 10 REMOVE BOULDERS
- 11 REMOVE RETAINING WALL
- 12 ADJUST MANHOLE TO FINISHED GRADE
- 13 REMOVE GATE
- 14 ADJUST VALVE BOX TO FINISHED GRADE
- 15 RELOCATE NATURAL GAS RISER (BY OTHERS)
- 16 RELOCATE ELECTRICAL TRANSFORMER (BY OTHERS)
- 17 OVERHEAD ELEC TO BE BURIED (BY OTHERS)
- 18 REMOVE GRAVEL DRIVEWAY



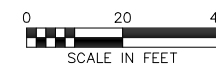
BEFORE YOU DIG
CALL FOR FREE
UNDERGROUND
LOCATION

LOCATE CALL CENTER OF ALASKA
STATEWIDE 800-478-3121 WILL
NOTIFY SUBSCRIBED UTILITIES ONLY.
OTHER UTILITIES NEED TO BE
CONTACTED INDIVIDUALLY.



KEYMAP

65% DESIGN
APRIL 2014



FIELD BOOKS	BM NO.	LOCATION	ELEV.	DATA	DRAWN BY	CHECKED BY	DATA	DRAWN BY	CHECKED BY	REV	DATE	DESCRIPTION	BY	REV	DATE	DESCRIPTION	BY
DESIGN				BASE			TELEPHONE										
STAKING				TOPOGRAPHY			ELECTRIC										
ASBUILT				PROFILE			CABLE TV										
CONTRACTOR				SANITARY SEWER			DESIGN										
INSPECTOR				STORM SEWER			QUANTITIES										
				WATER			MUN. FINAL CHK.										
				GAS													
CONSTRUCTION RECORD				VERTICAL DATUM			PLAN CHECK										



R&M Consultants, Inc.
9101 Vanguard Drive
Anchorage, Alaska 99507
907 522 1707 voice
907 522 3404 fax
www.rmconsult.com

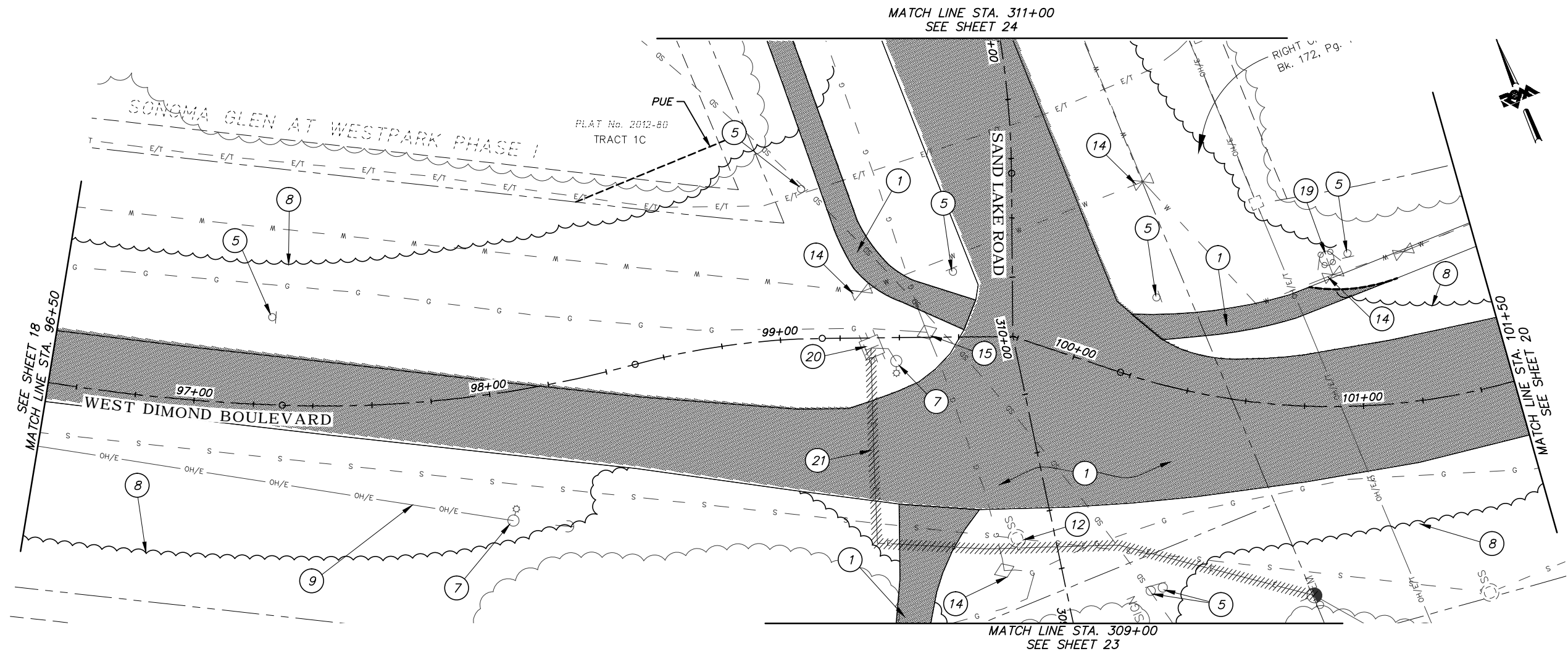


PROJECT MANAGEMENT AND ENGINEERING DIVISION

05-05 WEST DIMOND BOULEVARD UPGRADE
PHASE I: WESTPARK DRIVE TO SAND LAKE ROAD
DEMOLITION PLAN
WEST DIMOND BLVD - STA 91+50 TO STA 96+50

SCALE DATE 4/11/14 GRID 2323 2324
ACCT. NO. 2423 2424 SHEET 18 of 76

Plotted: 4/11/2014 7:33 AM File Location: Z:\project\1317.01- West Dimond Blvd\Engineering\Acad\1317-C-Demo Plan.dwg



- REMOVE PAVEMENT
- REMOVE CURB AND GUTTER
- REMOVE PIPE
- REMOVE FENCE
- REMOVE GRAVEL DRIVEWAY
- SAW CUT LINE
- EXISTING EDGE OF TREES
- CLEARING AND GRUBBING LIMITS
- REMOVE CONDUIT

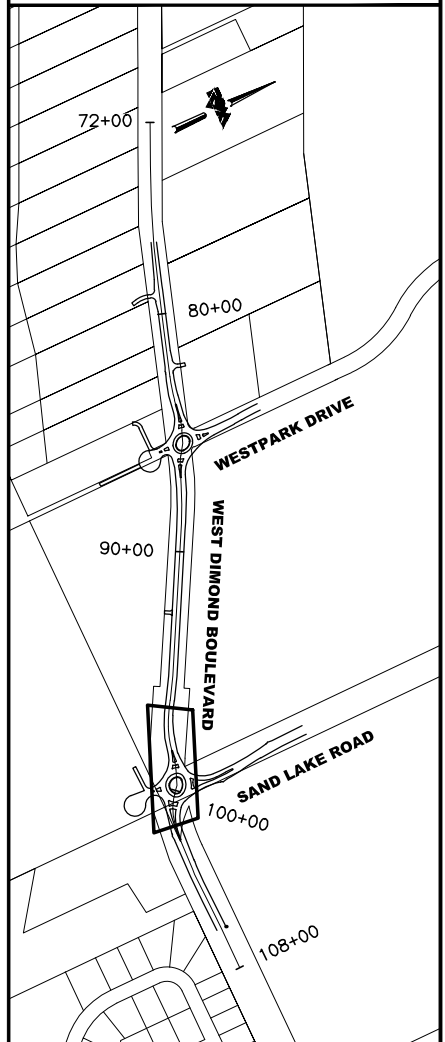
LEGEND

- 1 REMOVE PAVEMENT
- 2 REMOVE CURB AND GUTTER
- 3 REMOVE PIPE
- 4 REMOVE FENCE
- 5 REMOVE SIGNS
- 6 REMOVE MAILBOX
- 7 REMOVE LUMINARE (BY OTHERS)
- 8 CLEARING AND GRUBBING
- 9 OVERHEAD ELEC TO BE REMOVED (BY OTHERS)
- 10 REMOVE BOULDERS
- 11 REMOVE RETAINING WALL
- 12 ADJUST MANHOLE TO FINISHED GRADE
- 13 REMOVE GATE
- 14 ADJUST VALVE BOX TO FINISHED GRADE
- 15 RELOCATE NATURAL GAS RISER (BY OTHERS)
- 16 RELOCATE ELECTRICAL TRANSFORMER (BY OTHERS)
- 17 OVERHEAD ELEC TO BE BURIED (BY OTHERS)
- 18 REMOVE GRAVEL DRIVEWAY
- 19 REMOVE AND SALVAGE FIRE HYDRANT
- 20 REMOVE JUNCTION BOX
- 21 REMOVE CONDUIT



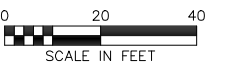
BEFORE YOU DIG
CALL FOR FREE
UNDERGROUND
LOCATION

LOCATE CALL CENTER OF ALASKA
STATEWIDE 800-478-3121 WILL
NOTIFY SUBSCRIBED UTILITIES ONLY.
OTHER UTILITIES NEED TO BE
CONTACTED INDIVIDUALLY.



KEYMAP

65% DESIGN
APRIL 2014



FIELD BOOKS	BM NO.	LOCATION	ELEV.	DATA	DRAWN BY	CHECKED BY	DATA	DRAWN BY	CHECKED BY	REV	DATE	DESCRIPTION	BY	REV	DATE	DESCRIPTION	BY
DESIGN				BASE			TELEPHONE										
STAKING				TOPOGRAPHY			ELECTRIC										
ASBUILT				PROFILE			CABLE TV										
CONTRACTOR				SANITARY SEWER			DESIGN										
INSPECTOR				STORM SEWER			QUANTITIES										
				WATER			MUN. FINAL CHK.										
				GAS													
CONSTRUCTION RECORD				VERTICAL DATUM			PLAN CHECK										

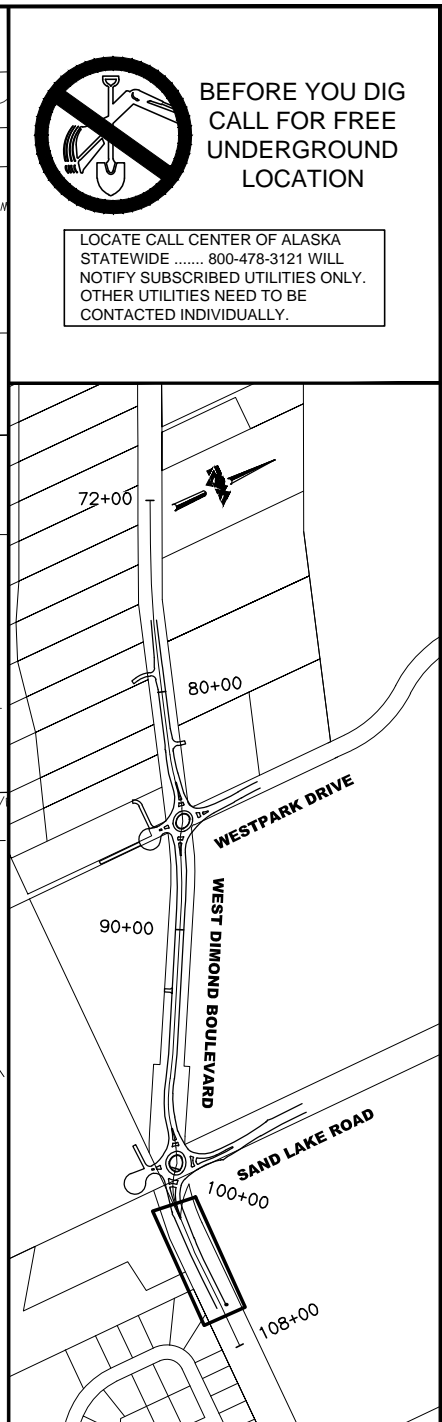
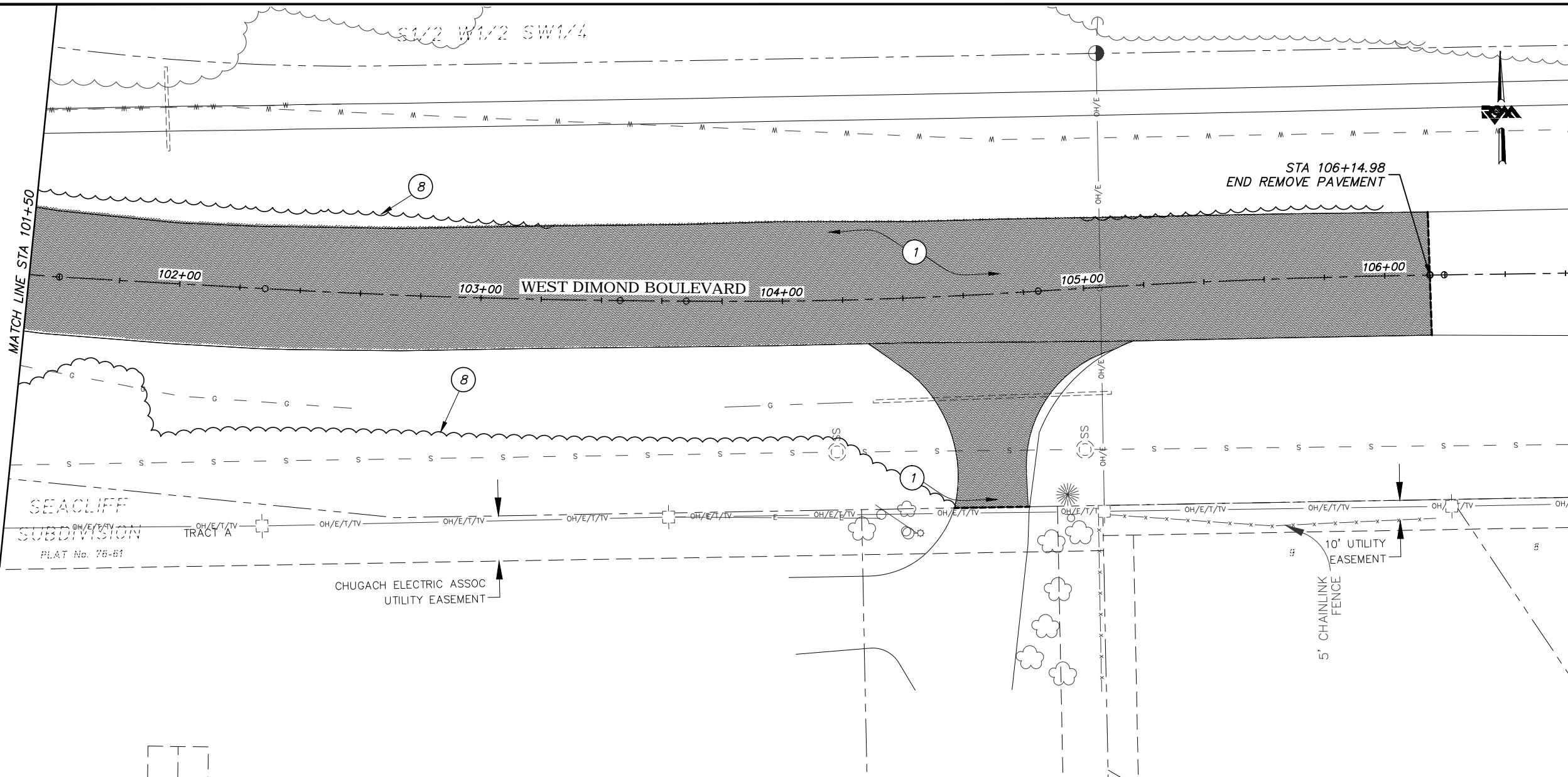
R&M
R&M Consultants, Inc.
9101 Vanguard Drive
Anchorage, Alaska 99507
907 522 1707 voice
907 522 3404 fax
www.rmconsult.com



PROJECT MANAGEMENT AND ENGINEERING DIVISION

05-05	WEST DIMOND BOULEVARD UPGRADE PHASE I: WESTPARK DRIVE TO SAND LAKE ROAD DEMOLITION PLAN WEST DIMOND BLVD - STA 96+50 TO STA 101+50
SCALE	DATE 4/11/14 GRID 2323 2324 ACCT. NO. 2423 2424
	SHEET 19 of 76

Plotted: 4/11/2014 7:33 AM File Location: Z:\project\1317.01- West Dimond Blvd\Engineering\Acad\1317-C-Demo Plan.dwg



**65% DESIGN
APRIL 2014**

0 20 40
SCALE IN FEET

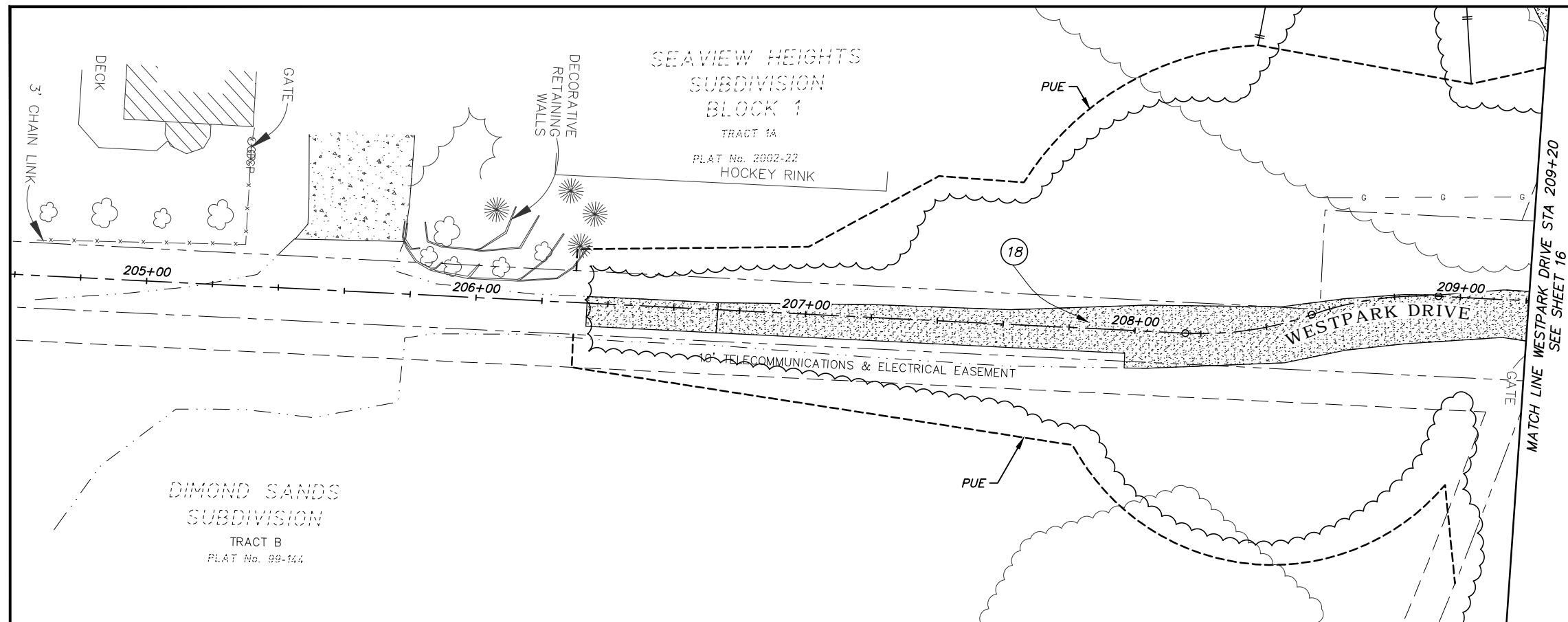
- LEGEND**
- | | |
|---|--|
| 1 REMOVE PAVEMENT | 10 REMOVE BOULDERS |
| 2 REMOVE CURB AND GUTTER | 11 REMOVE RETAINING WALL |
| 3 REMOVE PIPE | 12 ADJUST MANHOLE TO FINISHED GRADE |
| 4 REMOVE FENCE | 13 REMOVE GATE |
| 5 REMOVE SIGNS | 14 ADJUST VALVE BOX TO FINISHED GRADE |
| 6 REMOVE MAILBOX | 15 RELOCATE NATURAL GAS RISER (BY OTHERS) |
| 7 REMOVE LUMINARE (BY OTHERS) | 16 RELOCATE ELECTRICAL TRANSFORMER (BY OTHERS) |
| 8 CLEARING AND GRUBBING | 17 OVERHEAD ELEC TO BE BURIED (BY OTHERS) |
| 9 OVERHEAD ELEC TO BE REMOVED (BY OTHERS) | 18 REMOVE GRAVEL DRIVEWAY |
- REMOVE PAVEMENT
REMOVE CURB AND GUTTER
REMOVE PIPE
REMOVE FENCE
REMOVE GRAVEL DRIVEWAY
--- SAW CUT LINE
EXISTING EDGE OF TREES
CLEARING AND GRUBBING LIMITS

FIELD BOOKS	BM NO.	LOCATION	ELEV.	DATA	DRAWN BY	CHECKED BY	DATA	DRAWN BY	CHECKED BY	REV	DATE	DESCRIPTION	BY	REV	DATE	DESCRIPTION	BY
DESIGN				BASE			TELEPHONE										
STAKING				TOPOGRAPHY			ELECTRIC										
ASBUILT				PROFILE			CABLE TV										
CONTRACTOR				SANITARY SEWER			DESIGN										
INSPECTOR				STORM SEWER			QUANTITIES										
				WATER			MUN. FINAL CHK.										
				GAS													
CONSTRUCTION RECORD				VERTICAL DATUM			PLAN CHECK										

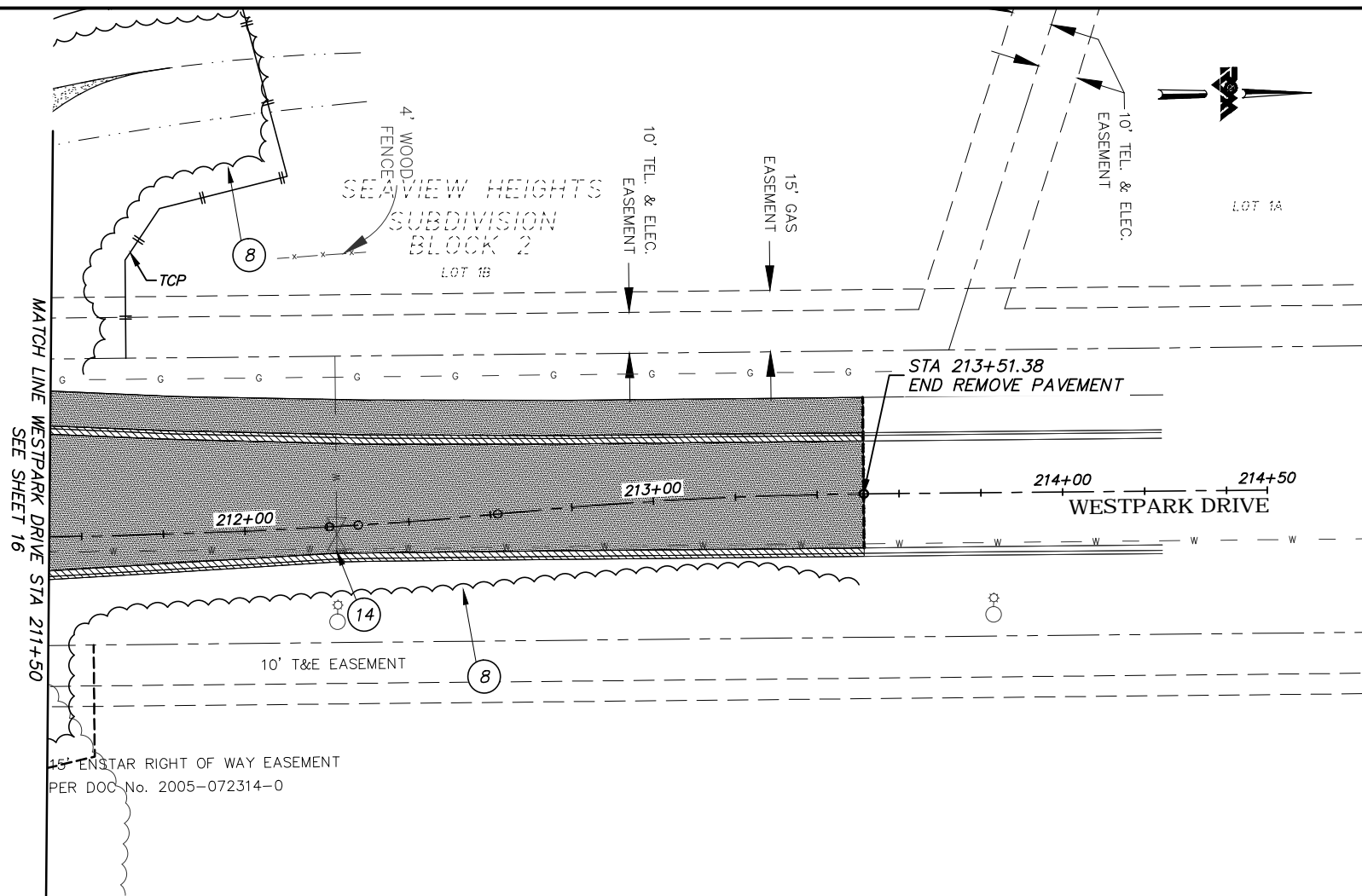
R&M
R&M Consultants, Inc.
9101 Vanguard Drive
Anchorage, Alaska 99507
907 522 1707 voice
907 522 3404 fax
www.rmconsult.com



PROJECT MANAGEMENT AND ENGINEERING DIVISION			
05-05	WEST DIMOND BOULEVARD UPGRADE PHASE I: WESTPARK DRIVE TO SAND LAKE ROAD DEMOLITION PLAN WEST DIMOND BLVD - STA 101+50 TO EOP		
SCALE	DATE 4/11/14	GRID 2323 2324 2423 2424	SHEET 20 of 76
	ACCT. NO.		



Plotted: 4/11/2014 7:33 AM File Location: Z:\project\1317.01- West Dimond Blvd\Engineering\Acad\1317-C-Demo Plan.dwg



- REMOVE PAVEMENT
REMOVE CURB AND GUTTER
REMOVE PIPE
REMOVE FENCE
REMOVE GRAVEL DRIVEWAY
--- SAW CUT LINE
EXISTING EDGE OF TREES
CLEARING AND GRUBBING LIMITS

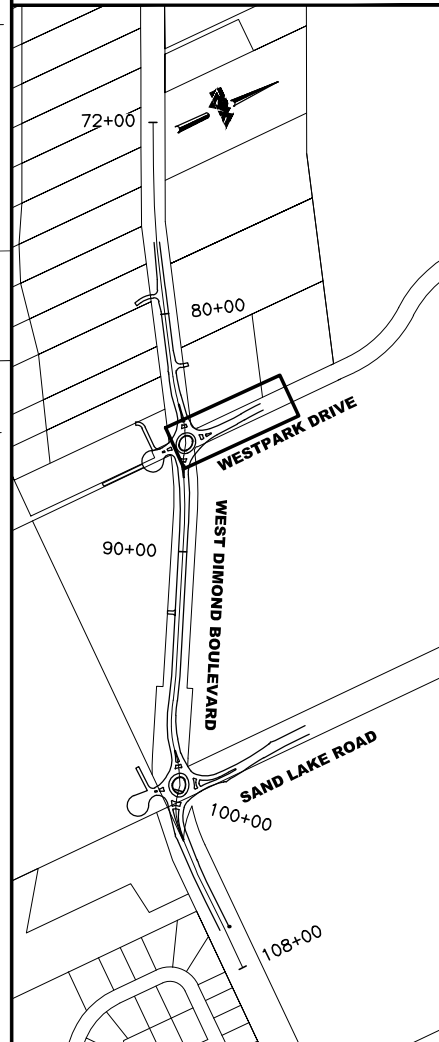
LEGEND

- 1 REMOVE PAVEMENT
2 REMOVE CURB AND GUTTER
3 REMOVE PIPE
4 REMOVE FENCE
5 REMOVE SIGNS
6 REMOVE MAILBOX
7 REMOVE LUMINARE (BY OTHERS)
8 CLEARING AND GRUBBING
9 OVERHEAD ELEC TO BE REMOVED (BY OTHERS)
10 REMOVE BOULDERS
11 REMOVE RETAINING WALL
12 ADJUST MANHOLE TO FINISHED GRADE
13 REMOVE GATE
14 ADJUST VALVE BOX TO FINISHED GRADE
15 RELOCATE NATURAL GAS RISER (BY OTHERS)
16 RELOCATE ELECTRICAL TRANSFORMER (BY OTHERS)
17 OVERHEAD ELEC TO BE BURIED (BY OTHERS)
18 REMOVE GRAVEL DRIVEWAY



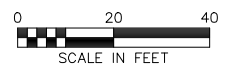
BEFORE YOU DIG
CALL FOR FREE
UNDERGROUND
LOCATION

LOCATE CALL CENTER OF ALASKA
STATEWIDE 800-478-3121 WILL
NOTIFY SUBSCRIBED UTILITIES ONLY.
OTHER UTILITIES NEED TO BE
CONTACTED INDIVIDUALLY.



KEYMAP

65% DESIGN
APRIL 2014



FIELD BOOKS	BM NO.	LOCATION	ELEV.	DATA	DRAWN BY	CHECKED BY	DATA	DRAWN BY	CHECKED BY	REV	DATE	DESCRIPTION	BY	REV	DATE	DESCRIPTION	BY
DESIGN				BASE			TELEPHONE										
STAKING				TOPOGRAPHY			ELECTRIC										
ASBUILT				PROFILE			CABLE TV										
CONTRACTOR				SANITARY SEWER			DESIGN										
INSPECTOR				STORM SEWER			QUANTITIES										
				WATER			MUN. FINAL CHK.										
				GAS													
CONSTRUCTION RECORD				VERTICAL DATUM			PLAN CHECK										

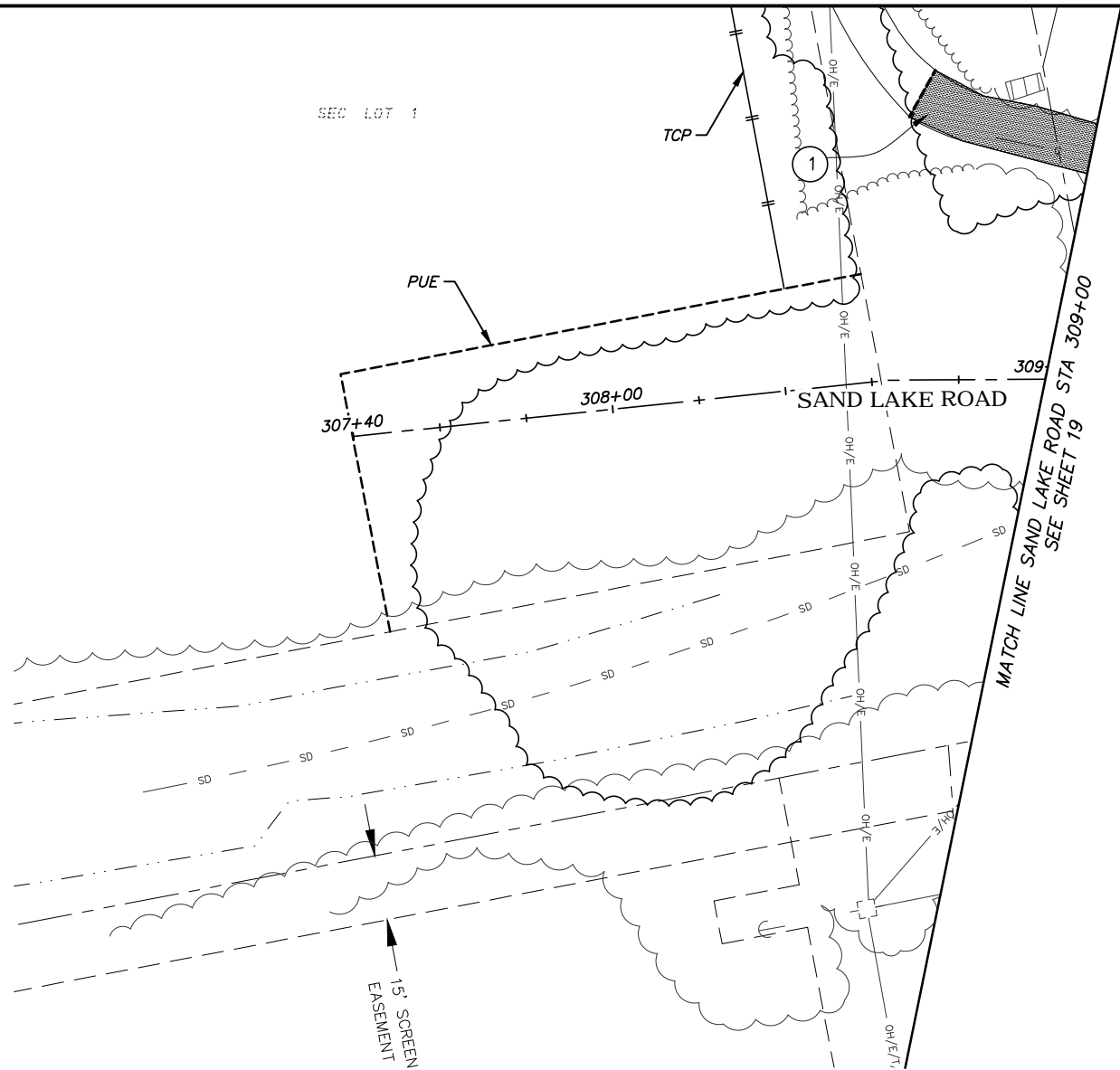


R&M Consultants, Inc.
9101 Vanguard Drive
Anchorage, Alaska 99507
907 522 1707 voice
907 522 3404 fax
www.rmconsult.com



PROJECT MANAGEMENT AND ENGINEERING DIVISION			
05-05	WEST DIMOND BOULEVARD UPGRADE PHASE I: WESTPARK DRIVE TO SAND LAKE ROAD DEMOLITION PLAN WESTPARK DRIVE - STA 209+50 TO STA 213+50		
SCALE	DATE 4/11/14	GRID 2323 2324 2423 2424	SHEET 22 of 76
	ACCT. NO.		

Plotted: 4/11/2014 7:34 AM File Location: Z:\project\1317.01- West Dimond Blvd\Engineering\Acad\1317-C-Demo Plan.dwg



- REMOVE PAVEMENT
- REMOVE CURB AND GUTTER
- REMOVE PIPE
- REMOVE FENCE
- REMOVE GRAVEL DRIVEWAY
- SAW CUT LINE
- EXISTING EDGE OF TREES
- CLEARING AND GRUBBING LIMITS

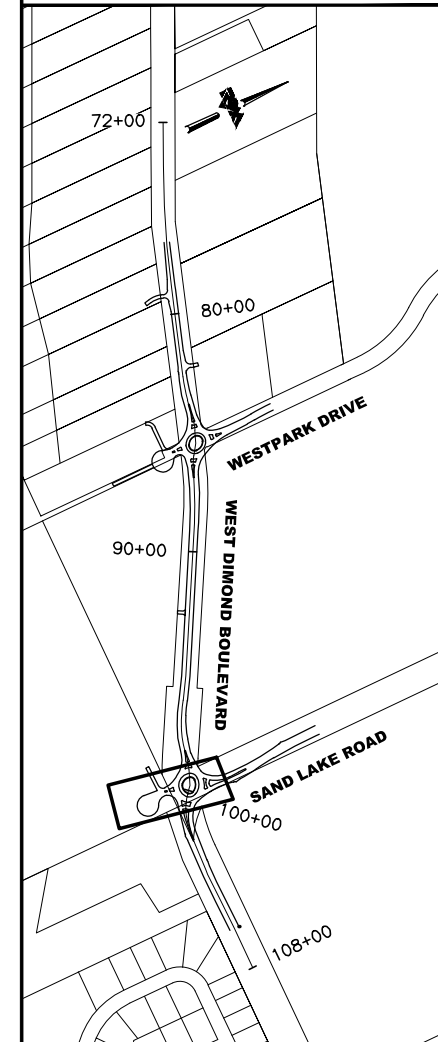
LEGEND

- 1 REMOVE PAVEMENT
- 2 REMOVE CURB AND GUTTER
- 3 REMOVE PIPE
- 4 REMOVE FENCE
- 5 REMOVE SIGNS
- 6 REMOVE MAILBOX
- 7 REMOVE LUMINARE (BY OTHERS)
- 8 CLEARING AND GRUBBING
- 9 OVERHEAD ELEC TO BE REMOVED (BY OTHERS)
- 10 REMOVE BOULDERS
- 11 REMOVE RETAINING WALL
- 12 ADJUST MANHOLE TO FINISHED GRADE
- 13 REMOVE GATE
- 14 ADJUST VALVE BOX TO FINISHED GRADE
- 15 RELOCATE NATURAL GAS RISER (BY OTHERS)
- 16 RELOCATE ELECTRICAL TRANSFORMER (BY OTHERS)
- 17 OVERHEAD ELEC TO BE BURIED (BY OTHERS)
- 18 REMOVE GRAVEL DRIVEWAY



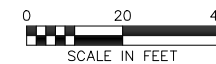
BEFORE YOU DIG
CALL FOR FREE
UNDERGROUND
LOCATION

LOCATE CALL CENTER OF ALASKA
STATEWIDE 800-478-3121 WILL
NOTIFY SUBSCRIBED UTILITIES ONLY.
OTHER UTILITIES NEED TO BE
CONTACTED INDIVIDUALLY.



KEYMAP

65% DESIGN
APRIL 2014



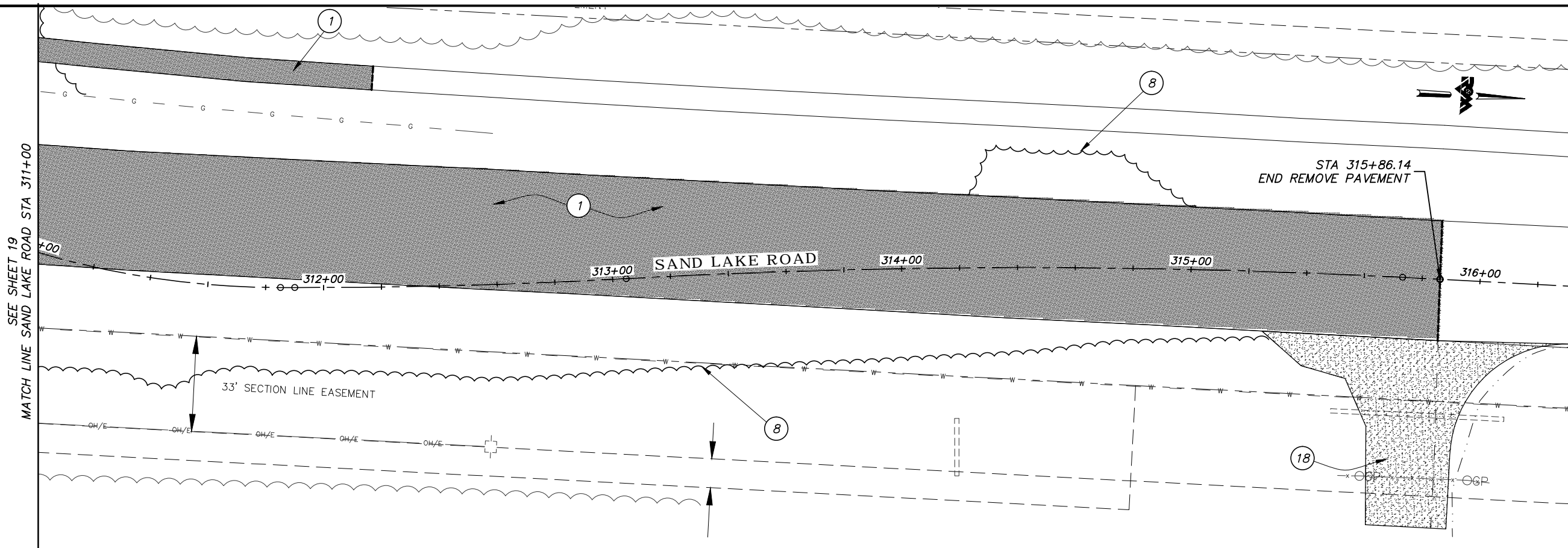
FIELD BOOKS		BM NO.	LOCATION	ELEV.	DATA	DRAWN BY	CHECKED BY	DATA	DRAWN BY	CHECKED BY	REV	DATE	DESCRIPTION	BY	REV	DATE	DESCRIPTION	BY
DESIGN					BASE			TELEPHONE										
STAKING					TOPOGRAPHY			ELECTRIC										
ASBUILT					PROFILE			CABLE TV										
CONTRACTOR					SANITARY SEWER			DESIGN										
INSPECTOR					STORM SEWER			QUANTITIES										
					WATER			MUN. FINAL CHK.										
					GAS													
CONSTRUCTION RECORD		VERTICAL DATUM			PLAN CHECK			REVISIONS										


R&M
R&M Consultants, Inc.
9101 Vanguard Drive
Anchorage, Alaska 99507
907 522 1707 voice
907 522 3404 fax
www.rmconsult.com



PROJECT MANAGEMENT AND ENGINEERING DIVISION			
05-05	WEST DIMOND BOULEVARD UPGRADE PHASE I: WESTPARK DRIVE TO SAND LAKE ROAD DEMOLITION PLAN SAND LAKE ROAD - STA 307+40 TO STA 309+00		
SCALE	DATE 4/11/14	GRID 2323 2324 2423 2424	SHEET 23 of 76
	ACCT. NO.		

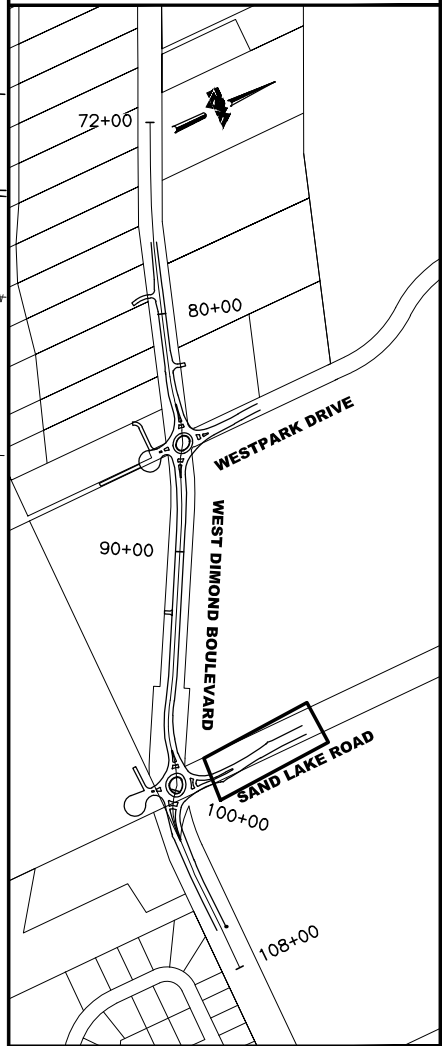
Plotted: 4/11/2014 7:34 AM File Location: Z:\project\1317.01- West Dimond Blvd\Engineering\Acad\1317-C-Demo Plan.dwg


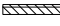
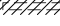
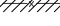
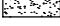







BEFORE YOU DIG
CALL FOR FREE
UNDERGROUND
LOCATION

LOCATE CALL CENTER OF ALASKA
STATEWIDE 800-478-3121 WILL
NOTIFY SUBSCRIBED UTILITIES ONLY.
OTHER UTILITIES NEED TO BE
CONTACTED INDIVIDUALLY.



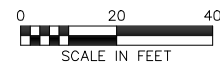
-  REMOVE PAVEMENT
-  REMOVE CURB AND GUTTER
-  REMOVE PIPE
-  REMOVE FENCE
-  REMOVE GRAVEL DRIVEWAY
-  SAW CUT LINE
-  EXISTING EDGE OF TREES
-  CLEARING AND GRUBBING LIMITS

LEGEND

- | | |
|---|--|
| 1 REMOVE PAVEMENT | 10 REMOVE BOULDERS |
| 2 REMOVE CURB AND GUTTER | 11 REMOVE RETAINING WALL |
| 3 REMOVE PIPE | 12 ADJUST MANHOLE TO FINISHED GRADE |
| 4 REMOVE FENCE | 13 REMOVE GATE |
| 5 REMOVE SIGNS | 14 ADJUST VALVE BOX TO FINISHED GRADE |
| 6 REMOVE MAILBOX | 15 RELOCATE NATURAL GAS RISER (BY OTHERS) |
| 7 REMOVE LUMINARE (BY OTHERS) | 16 RELOCATE ELECTRICAL TRANSFORMER (BY OTHERS) |
| 8 CLEARING AND GRUBBING | 17 OVERHEAD ELEC TO BE BURIED (BY OTHERS) |
| 9 OVERHEAD ELEC TO BE REMOVED (BY OTHERS) | 18 REMOVE GRAVEL DRIVEWAY |

KEYMAP

65% DESIGN
APRIL 2014



FIELD BOOKS	BM NO.	LOCATION	ELEV.	DATA	DRAWN BY	CHECKED BY	DATA	DRAWN BY	CHECKED BY	REV	DATE	DESCRIPTION	BY	REV	DATE	DESCRIPTION	BY
DESIGN				BASE			TELEPHONE										
STAKING				TOPOGRAPHY			ELECTRIC										
				PROFILE			CABLE TV										
ASBUILT				SANITARY SEWER			DESIGN										
CONTRACTOR				STORM SEWER			QUANTITIES										
INSPECTOR				WATER			MUN. FINAL CHK.										
				GAS													
CONSTRUCTION RECORD																	



R&M Consultants, Inc.
9101 Vanguard Drive
Anchorage, Alaska 99507
907 522 1707 voice
907 522 3404 fax
www.rmconsult.com



PROJECT MANAGEMENT AND ENGINEERING DIVISION			
05-05	WEST DIMOND BOULEVARD UPGRADE PHASE I: WESTPARK DRIVE TO SAND LAKE ROAD DEMOLITION PLAN SAND LAKE ROAD - STA 311+00 TO STA 316+00		
SCALE	DATE 4/11/14 ACCT. NO.	GRID 2323 2324 2423 2424	SHEET 24 of 76