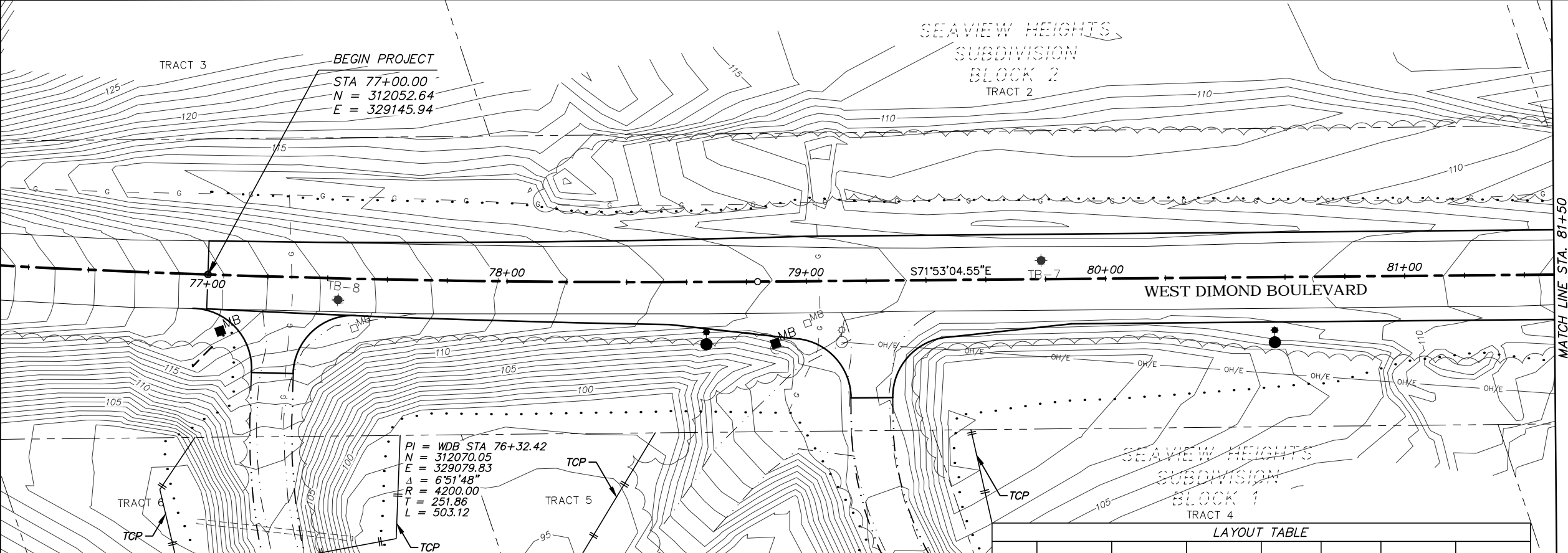


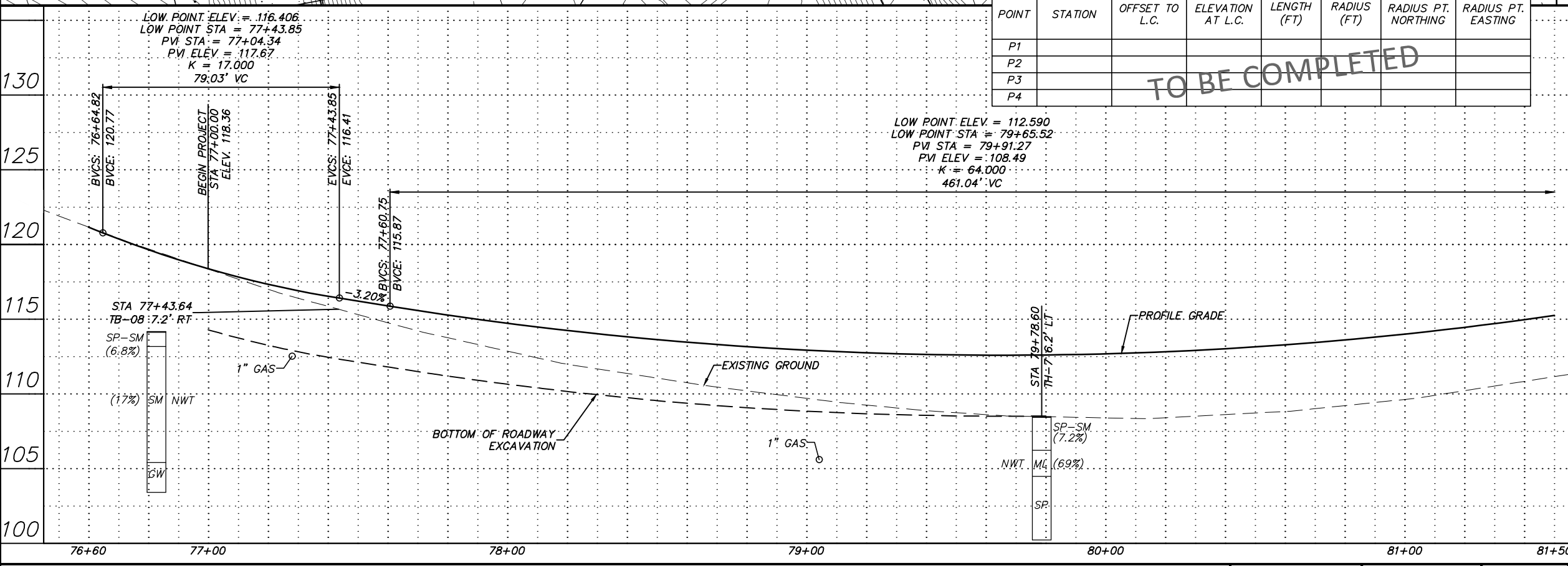
Plotted: 4/11/2014 7:35 AM File Location: Z:\project\317.01 - West Dimond Blvd\Engineering\Acad\317-E-P&Ps.dwg



MATCH LINE STA. 81+50
SHEET 33

**BEFORE YOU DIG
CALL FOR FREE
UNDERGROUND
LOCATION**

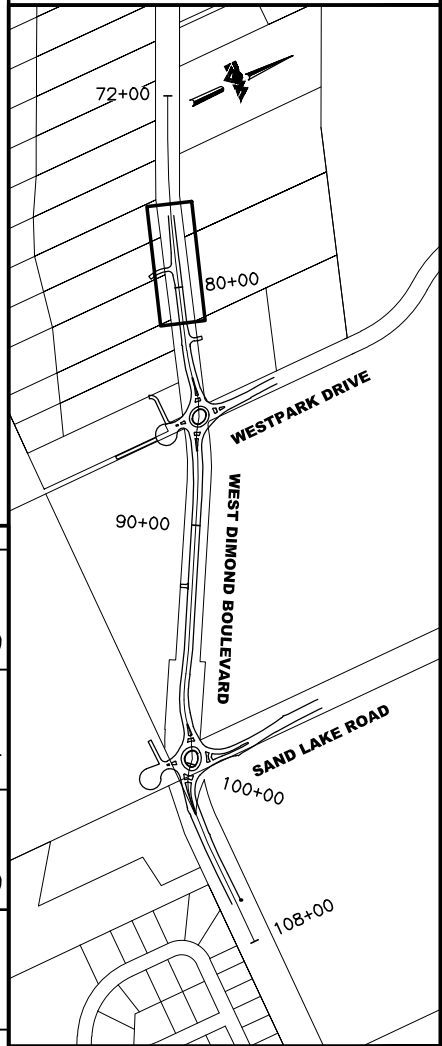
LOCATE CALL CENTER OF ALASKA
STATEWIDE 800-478-3121 WILL
NOTIFY SUBSCRIBED UTILITIES ONLY.
OTHER UTILITIES NEED TO BE
CONTACTED INDIVIDUALLY.



LAYOUT TABLE

POINT	STATION	OFFSET TO L.C.	ELEVATION AT L.C.	LENGTH (FT)	RADIUS (FT)	RADIUS PT. NORTHING	RADIUS PT. EASTING
P1							
P2							
P3							
P4							

TO BE COMPLETED



**65% DESIGN
APRIL 2014**



FIELD BOOKS	BM NO.	LOCATION	ELEV.	DATA	DRAWN BY	CHECKED BY	DATA	DRAWN BY	CHECKED BY	REV	DATE	DESCRIPTION	BY	REV	DATE	DESCRIPTION	BY	
DESIGN				BASE			TELEPHONE											
STAKING				TOPOGRAPHY			ELECTRIC											
ASBULT				PROFILE			CABLE TV											
CONTRACTOR				SANITARY SEWER			DESIGN											
INSPECTOR				STORM SEWER			QUANTITIES											
CONSTRUCTION RECORD				WATER			MUN. FINAL CHK.											
				GAS														

R&M Consultants, Inc.
9101 Vanguard Drive
Anchorage, Alaska 99507
907 522 1707 voice
907 522 3404 fax
www.rmconsult.com



**PROJECT MANAGEMENT AND
ENGINEERING DIVISION**

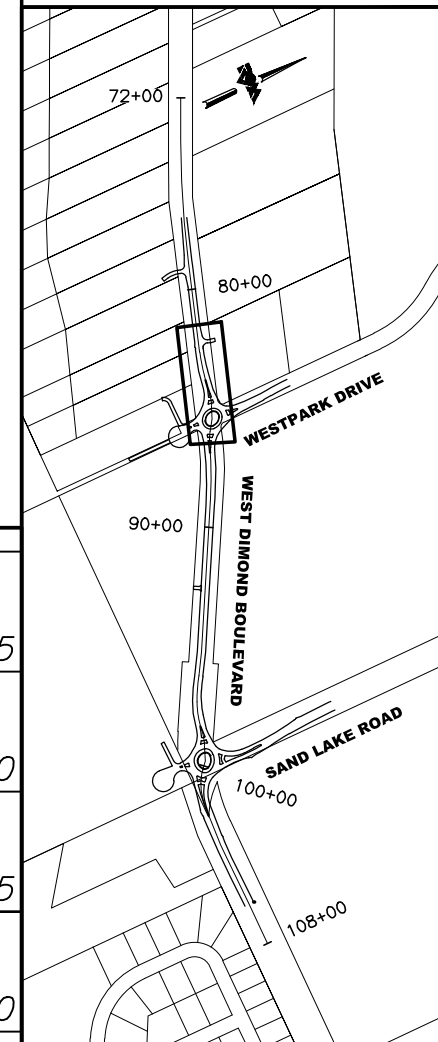
05-05 WEST DIMOND BOULEVARD UPGRADE
PHASE I: WESTPARK DRIVE TO SAND LAKE ROAD
PLAN AND PROFILE
WEST DIMOND BLVD - BOP TO STA 81+50

SCALE 1:20 H DATE 4/11/14 GRID 2323 2324
1:4 V ACCT. NO. 2423 2424 SHEET 32 of 76



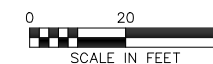
BEFORE YOU DIG
CALL FOR FREE
UNDERGROUND
LOCATION

LOCATE CALL CENTER OF ALASKA
STATEWIDE 800-478-3121 WILL
NOTIFY SUBSCRIBED UTILITIES ONLY.
OTHER UTILITIES NEED TO BE
CONTACTED INDIVIDUALLY.

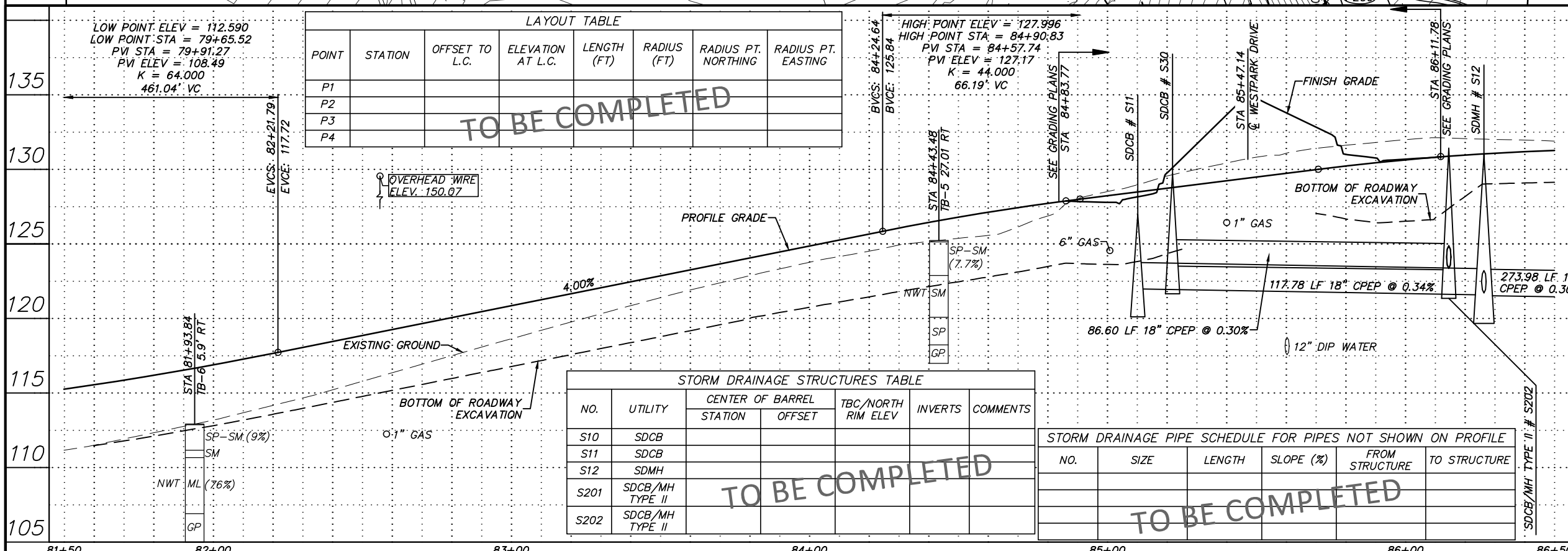
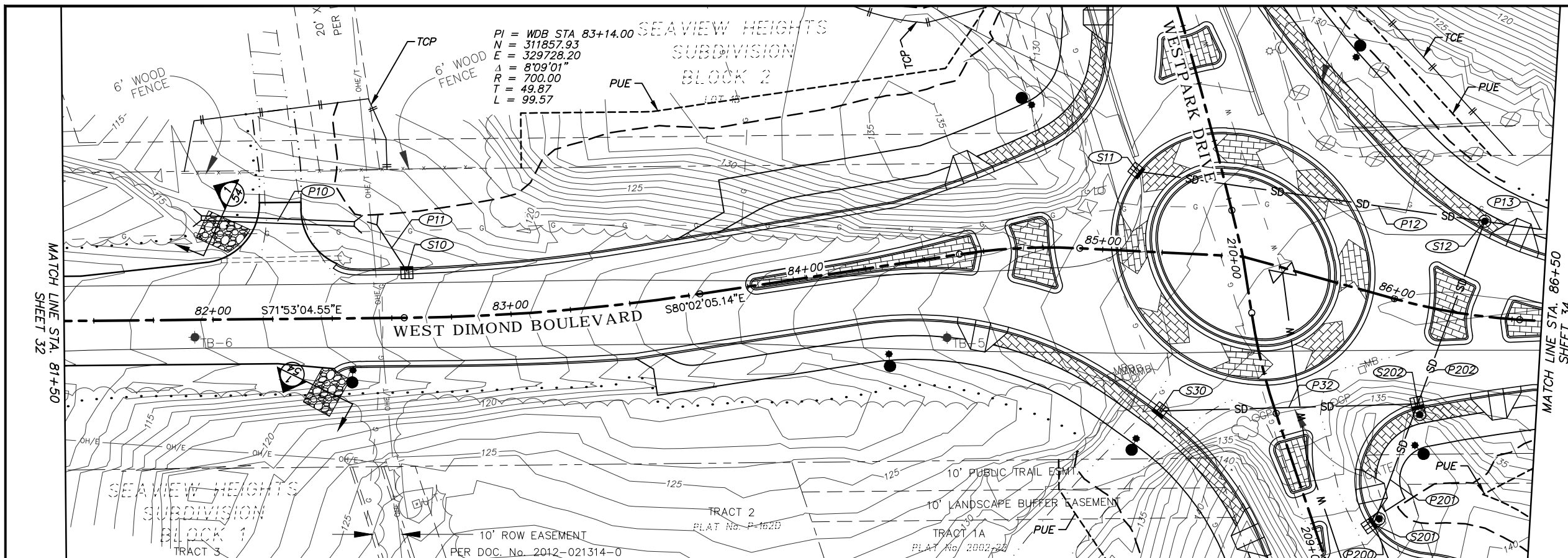


KEYMAP

65% DESIGN
APRIL 2014



SCALE IN FEET



LAYOUT TABLE

POINT	STATION	OFFSET TO L.C.	ELEVATION AT L.C.	LENGTH (FT)	RADIUS (FT)	RADIUS PT. NORTHING	RADIUS PT. EASTING
P1							
P2							
P3							
P4							

STORM DRAINAGE STRUCTURES TABLE

NO.	UTILITY	CENTER OF BARREL		TBC/NORTH RIM ELEV	INVERTS	COMMENTS
		STATION	OFFSET			
S10	SDCB					
S11	SDCB					
S12	SDMH					
S201	SDCB/MH TYPE II					
S202	SDCB/MH TYPE II					

STORM DRAINAGE PIPE SCHEDULE FOR PIPES NOT SHOWN ON PROFILE

NO.	SIZE	LENGTH	SLOPE (%)	FROM STRUCTURE	TO STRUCTURE

Plotted: 4/11/2014 7:35 AM File Location: Z:\project\317.01 - West Dimond Blvd\Engineering\Acad\317-E-P&Ps.dwg

FIELD BOOKS	BM NO.	LOCATION	ELEV.	DATA	DRAWN BY	CHECKED BY	DATA	DRAWN BY	CHECKED BY	REV	DATE	DESCRIPTION	BY	REV	DATE	DESCRIPTION	BY	
DESIGN				BASE			TELEPHONE											
STAKING				TOPOGRAPHY			ELECTRIC											
ASBUILT				PROFILE			CABLE TV											
CONTRACTOR				SANITARY SEWER			DESIGN											
INSPECTOR				STORM SEWER			QUANTITIES											
CONSTRUCTION RECORD				WATER			MUN. FINAL CHK.											
				GAS														

R&M Consultants, Inc.
9101 Vanguard Drive
Anchorage, Alaska 99507
907 522 1707 voice
907 522 3404 fax
www.rmconsult.com



PROJECT MANAGEMENT AND ENGINEERING DIVISION

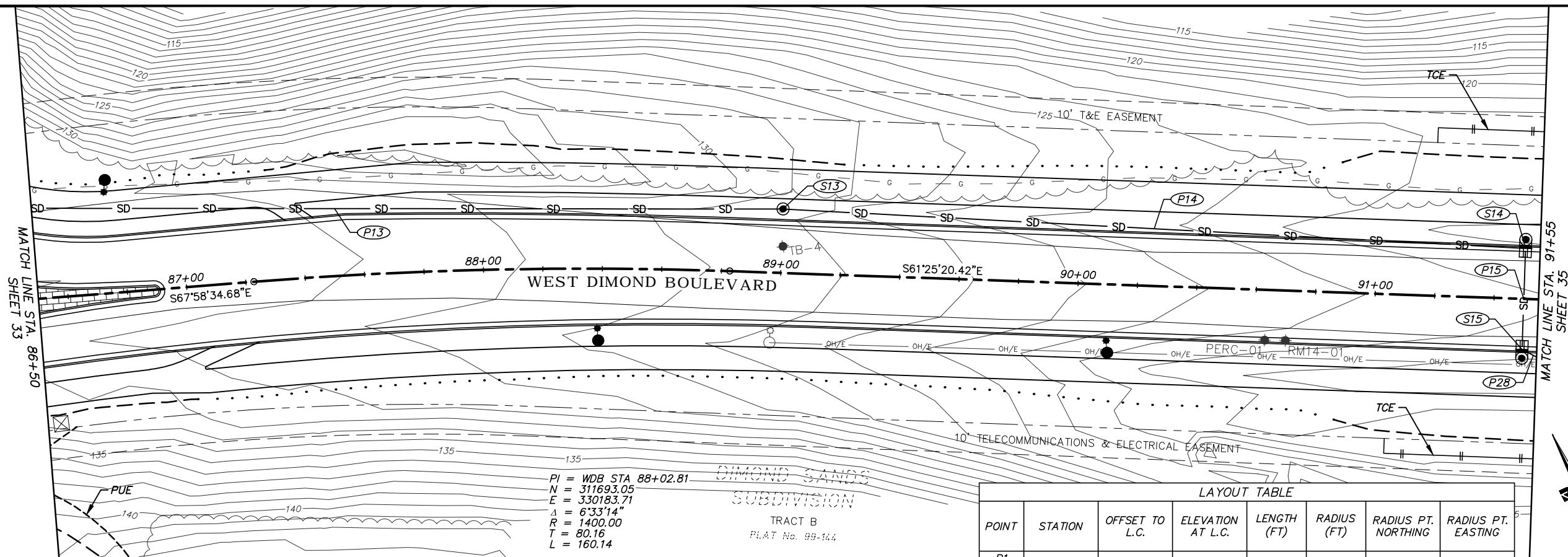
05-05 WEST DIMOND BOULEVARD UPGRADE
PHASE I: WESTPARK DRIVE TO SAND LAKE ROAD
PLAN AND PROFILE
WEST DIMOND BLVD - STA 81+50 TO STA 86+50

SCALE 1:20 H DATE 4/11/14 GRID 2323 2324
1:4 V ACCT. NO. 2423 2424 SHEET 33 of 76



**BEFORE YOU DIG
CALL FOR FREE
UNDERGROUND
LOCATION**

LOCATE CALL CENTER OF ALASKA
STATEWIDE 800-478-3121 WILL
NOTIFY SUBSCRIBED UTILITIES ONLY.
OTHER UTILITIES NEED TO BE
CONTACTED INDIVIDUALLY.



LAYOUT TABLE

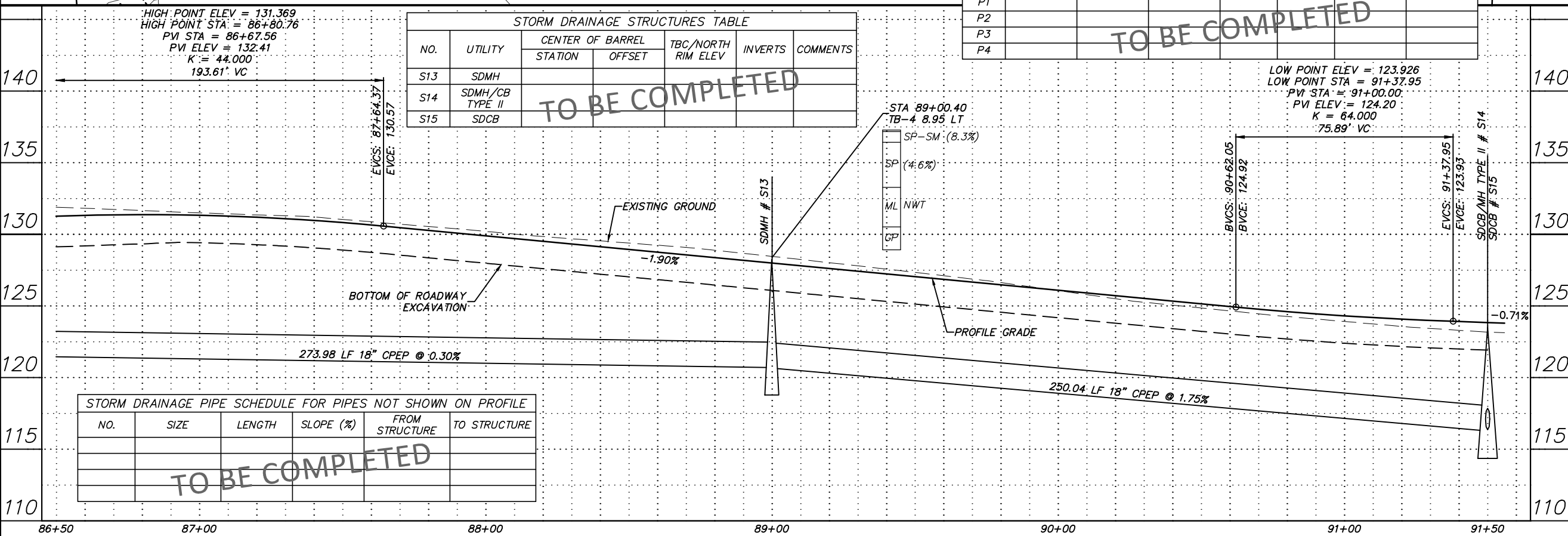
POINT	STATION	OFFSET TO L.C.	ELEVATION AT L.C.	LENGTH (FT)	RADIUS (FT)	RADIUS PT. NORTHING	RADIUS PT. EASTING
P1							
P2							
P3							
P4							

TO BE COMPLETED

STORM DRAINAGE STRUCTURES TABLE

NO.	UTILITY	CENTER OF BARREL		TBC/NORTH RIM ELEV	INVERTS	COMMENTS
		STATION	OFFSET			
S13	SDMH					
S14	SDMH/CB TYPE II					
S15	SDCB					

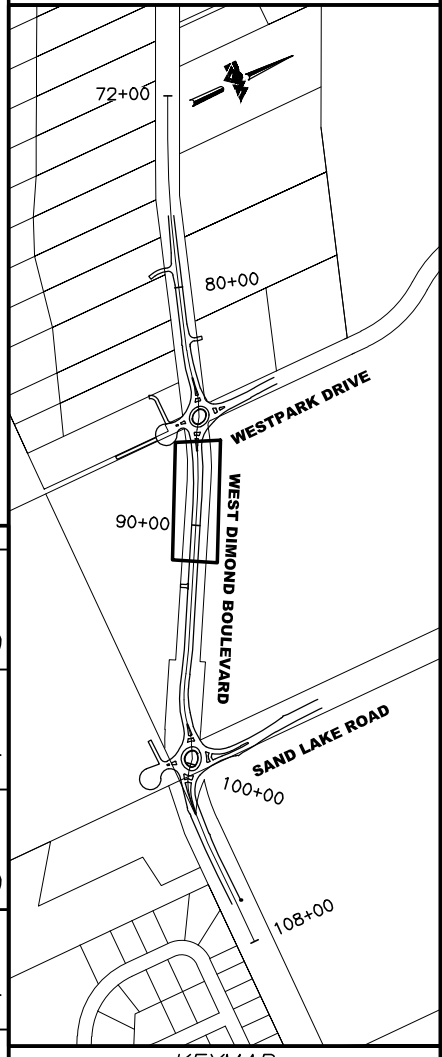
TO BE COMPLETED



STORM DRAINAGE PIPE SCHEDULE FOR PIPES NOT SHOWN ON PROFILE

NO.	SIZE	LENGTH	SLOPE (%)	FROM STRUCTURE	TO STRUCTURE

TO BE COMPLETED



**65% DESIGN
APRIL 2014**



Plotted: 4/11/2014 7:35 AM File Location: Z:\project\317.01 - West Dimond Blvd\Engineering\Acad\317.01-E-P&Ps.dwg

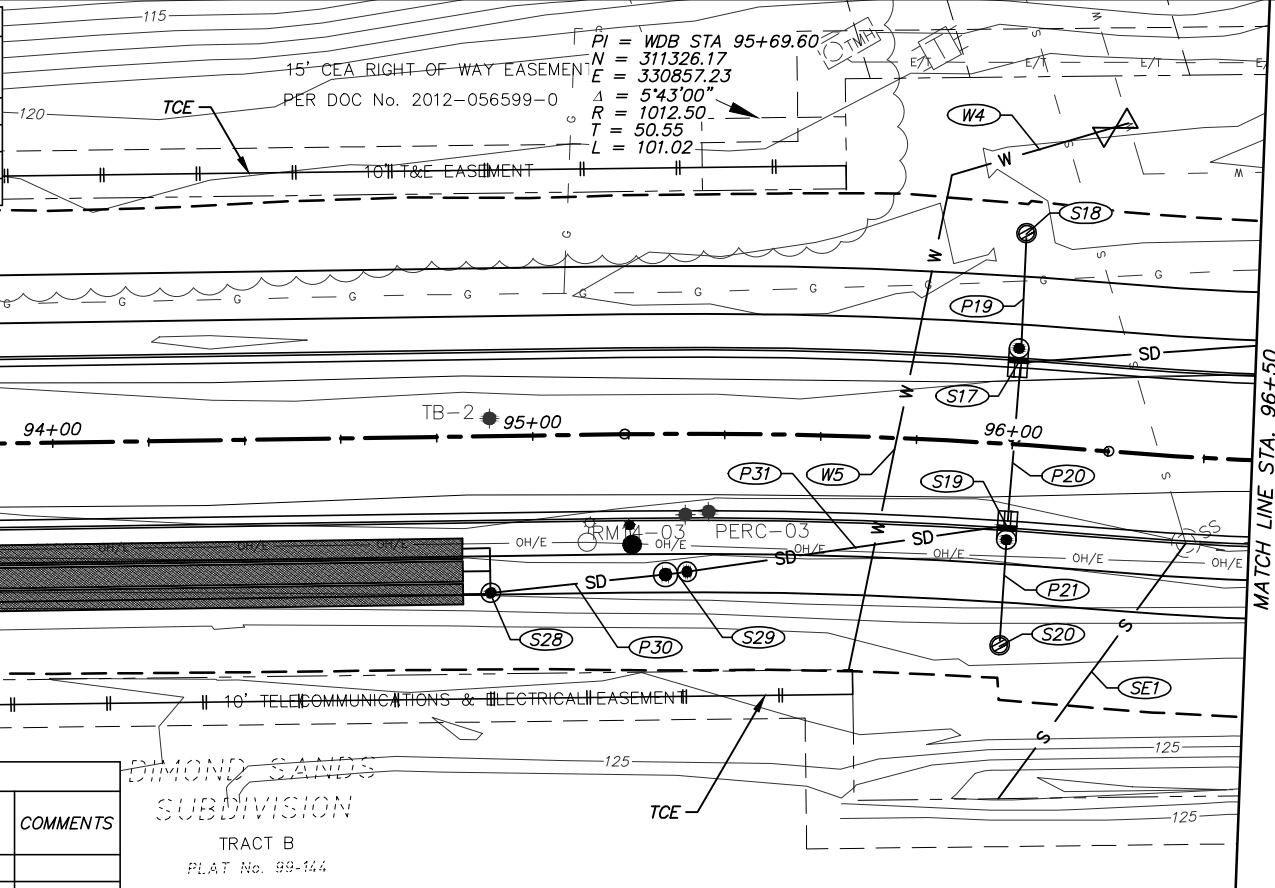
FIELD BOOKS	BM NO.	LOCATION	ELEV.	DATA	DRAWN BY	CHECKED BY	DATA	DRAWN BY	CHECKED BY	REV	DATE	DESCRIPTION	BY	REV	DATE	DESCRIPTION	BY
DESIGN				BASE			TELEPHONE										
STAKING				TOPOGRAPHY			ELECTRIC										
ASBUILT				PROFILE			CABLE TV										
CONTRACTOR				SANITARY SEWER			DESIGN										
INSPECTOR				STORM SEWER			QUANTITIES										
CONSTRUCTION RECORD				WATER			MUN. FINAL CHK.										
				GAS													

R&M Consultants, Inc.
 9101 Vanguard Drive
 Anchorage, Alaska 99507
 907 522 1707 voice
 907 522 3404 fax
 www.rmconsult.com

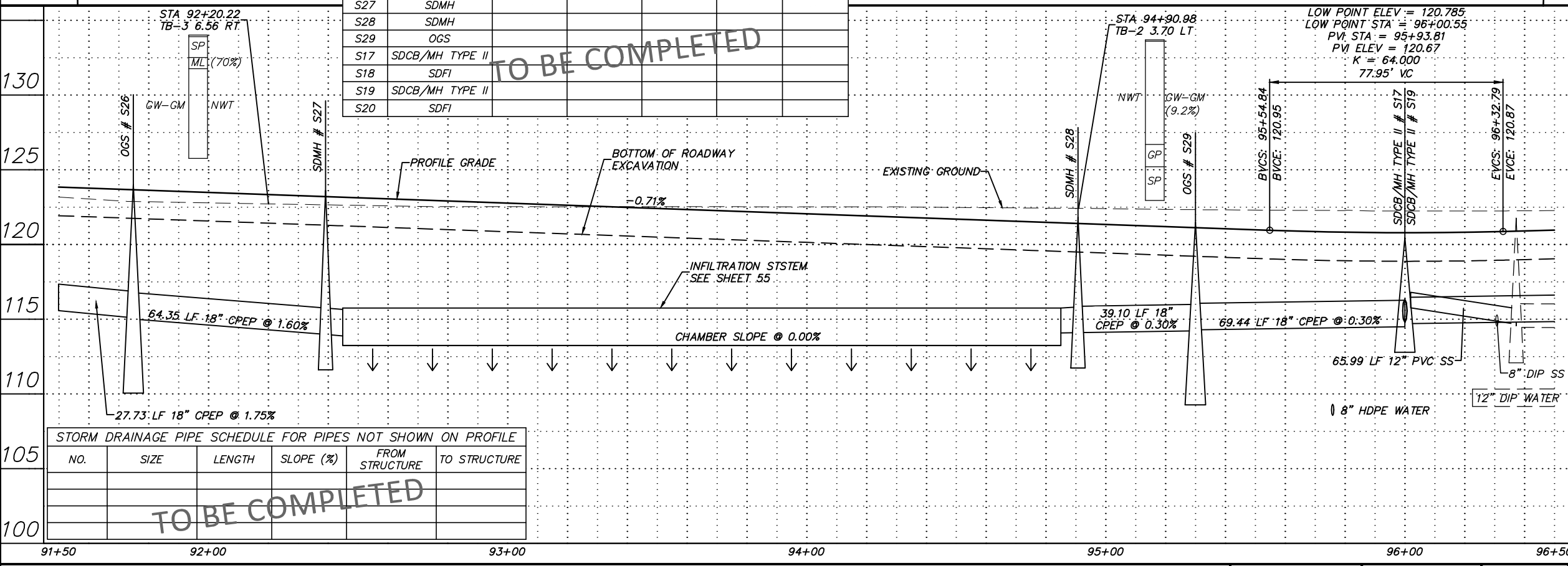


PROJECT MANAGEMENT AND ENGINEERING DIVISION	
05-05	WEST DIMOND BOULEVARD UPGRADE PHASE I: WESTPARK DRIVE TO SAND LAKE ROAD PLAN AND PROFILE WEST DIMOND BLVD - STA 86+50 TO STA 91+50
SCALE 1:20 H 1:4 V	DATE 4/11/14 ACCT. NO.
GRID 2323 2324 2423 2424	SHEET 34 of 76

SANITARY SEWER PIPE SCHEDULE						WATER PIPE SCHEDULE					
NO.	SIZE	LENGTH	SLOPE (%)	FROM STRUCTURE	TO STRUCTURE	NO.	SIZE	LENGTH	SLOPE (%)	FROM STRUCTURE	TO STRUCTURE
TO BE COMPLETED						TO BE COMPLETED					



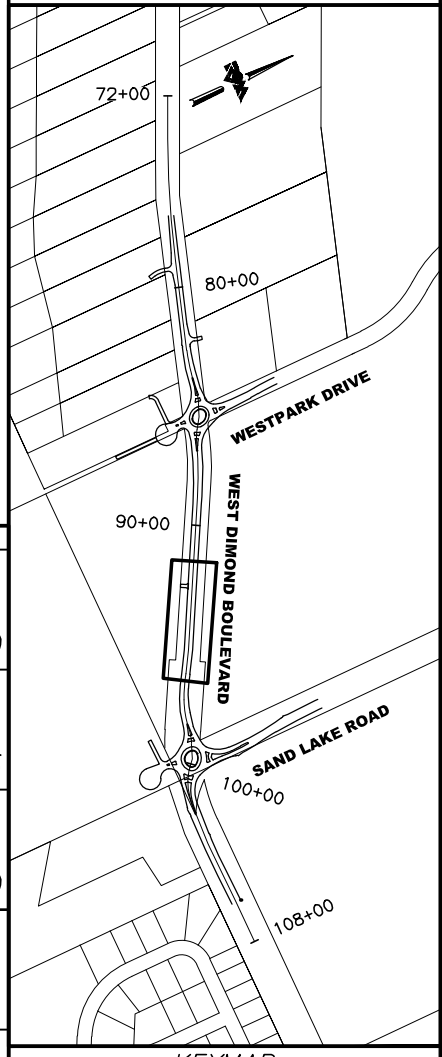
NO.	UTILITY	CENTER OF BARREL		TBC/NORTH RIM ELEV	INVERTS	COMMENTS
		STATION	OFFSET			
S26	OGS					
S27	SDMH					
S28	SDMH					
S29	OGS					
S17	SDCB/MH TYPE II					
S18	SDFI					
S19	SDCB/MH TYPE II					
S20	SDFI					



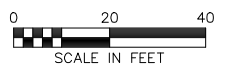
NO.	SIZE	LENGTH	SLOPE (%)	FROM STRUCTURE	TO STRUCTURE
TO BE COMPLETED					

BEFORE YOU DIG CALL FOR FREE UNDERGROUND LOCATION

LOCATE CALL CENTER OF ALASKA STATEWIDE 800-478-3121 WILL NOTIFY SUBSCRIBED UTILITIES ONLY. OTHER UTILITIES NEED TO BE CONTACTED INDIVIDUALLY.



**65% DESIGN
APRIL 2014**



File Location: Z:\project\1317.01 - West Dimond Blvd\Engineering\Acad\1317-E-P&Ps.dwg
Plotted: 4/11/2014 7:35 AM

FIELD BOOKS	BM NO.	LOCATION	ELEV.	DATA	DRAWN BY	CHECKED BY	DATA	DRAWN BY	CHECKED BY	REV	DATE	DESCRIPTION	BY	REV	DATE	DESCRIPTION	BY	
DESIGN				BASE			TELEPHONE											
STAKING				TOPOGRAPHY			ELECTRIC											
ASBUILT				PROFILE			CABLE TV											
CONTRACTOR				SANITARY SEWER			DESIGN											
INSPECTOR				STORM SEWER			QUANTITIES											
CONSTRUCTION RECORD				WATER			MUN. FINAL CHK.											
				GAS														

R&M
R&M Consultants, Inc.
9101 Vanguard Drive
Anchorage, Alaska 99507
907 522 1707 voice
907 522 3404 fax
www.rmconsult.com



PROJECT MANAGEMENT AND ENGINEERING DIVISION

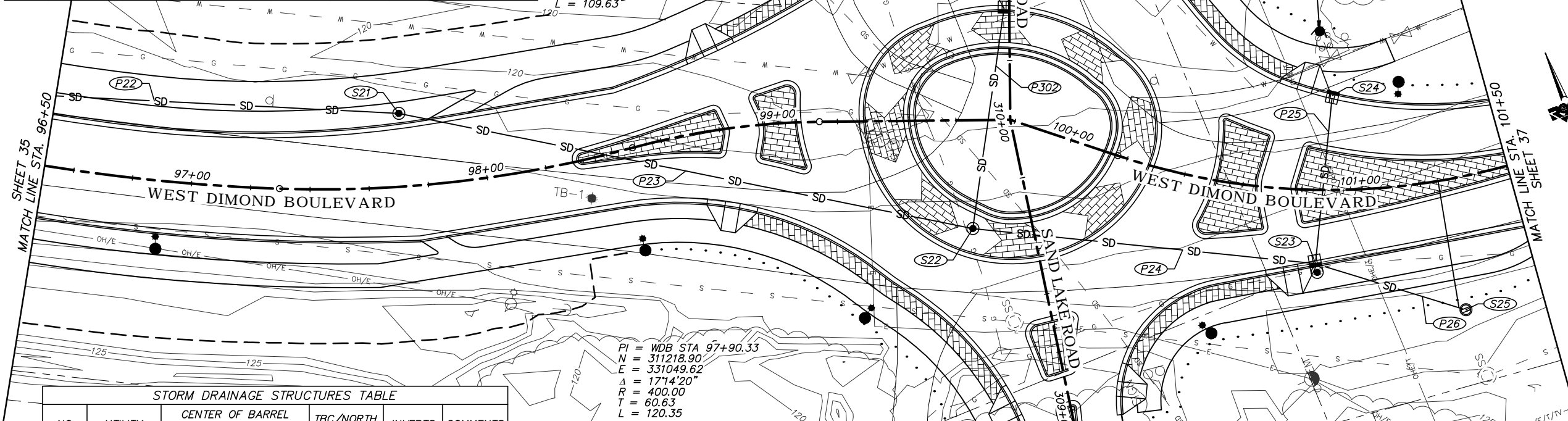
05-05 WEST DIMOND BOULEVARD UPGRADE
PHASE I: WESTPARK DRIVE TO SAND LAKE ROAD
PLAN AND PROFILE
WEST DIMOND BLVD - STA 91+50 TO STA 96+50

SCALE 1:20 H DATE 4/11/14 GRID 2323 2324
1:4 V ACCT. NO. 2423 2424 SHEET 35 of 76

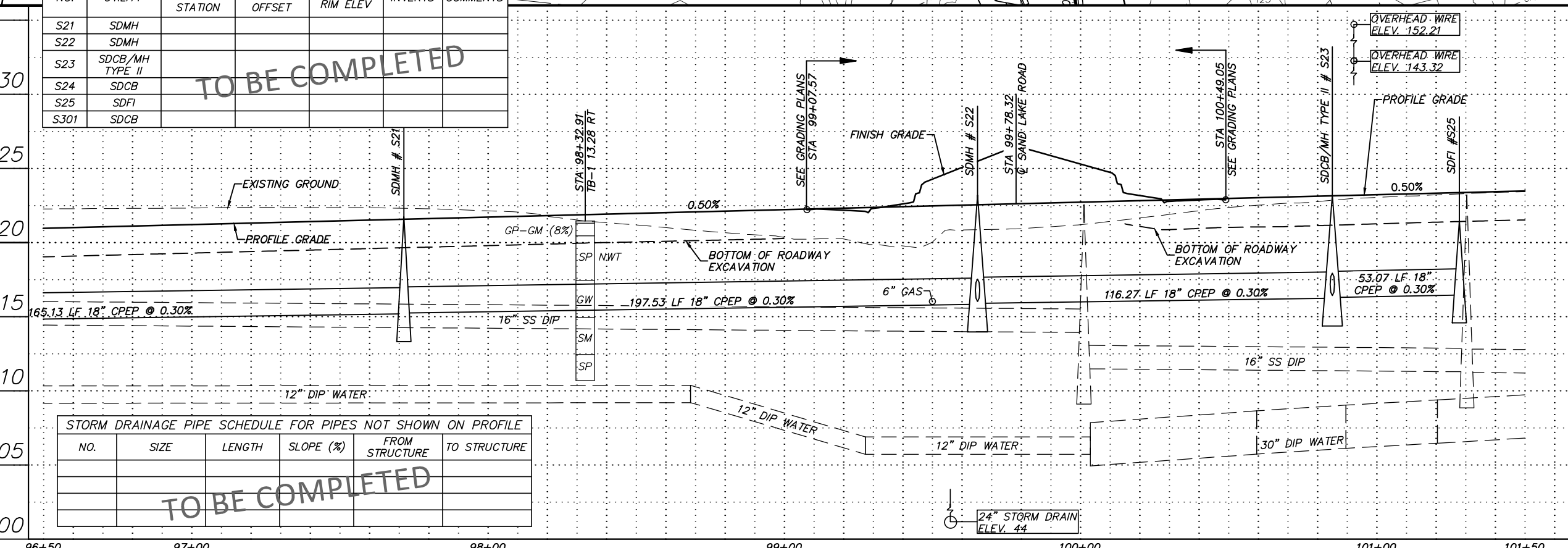
LAYOUT TABLE							
POINT	STATION	OFFSET TO L.C.	ELEVATION AT L.C.	LENGTH (FT)	RADIUS (FT)	RADIUS PT. NORTHING	RADIUS PT. EASTING
P1							
P2							
P3							

PLAT No. 2012-60
TRACT 1C
PI = WDB STA 96+75.02
N = 311266.73
E = 330944.39
Δ = 95°1'10"
R = 637.50
T = 54.95
L = 109.63

PI = WDB STA 97+90.33
N = 311218.90
E = 331049.62
Δ = 171°4'20"
R = 400.00
T = 60.63
L = 120.35



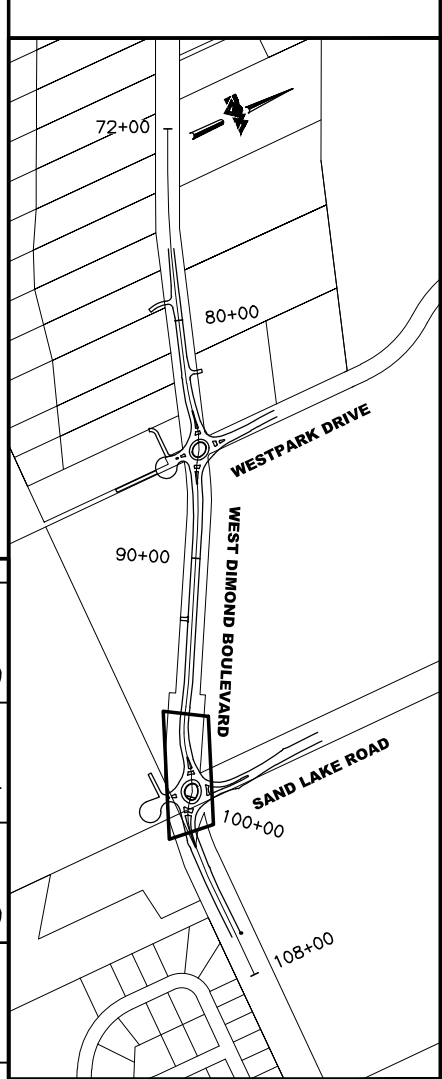
STORM DRAINAGE STRUCTURES TABLE						
NO.	UTILITY	CENTER OF BARREL		TBC/NORTH RIM ELEV	INVERTS	COMMENTS
		STATION	OFFSET			
S21	SDMH					
S22	SDMH					
S23	SDCB/MH TYPE II					
S24	SDCB					
S25	SDFI					
S301	SDCB					



STORM DRAINAGE PIPE SCHEDULE FOR PIPES NOT SHOWN ON PROFILE					
NO.	SIZE	LENGTH	SLOPE (%)	FROM STRUCTURE	TO STRUCTURE

BEFORE YOU DIG CALL FOR FREE UNDERGROUND LOCATION

LOCATE CALL CENTER OF ALASKA STATEWIDE 800-478-3121 WILL NOTIFY SUBSCRIBED UTILITIES ONLY. OTHER UTILITIES NEED TO BE CONTACTED INDIVIDUALLY.



65% DESIGN
APRIL 2014

0 20 40
SCALE IN FEET

File Location: Z:\project\317.01 - West Dimond Blvd\Engineering\Acad\317-01-E-P&Ps.dwg
Plotted: 4/11/2014 7:36 AM

FIELD BOOKS	BM NO.	LOCATION	ELEV.	DATA	DRAWN BY	CHECKED BY	DATA	DRAWN BY	CHECKED BY	REV	DATE	DESCRIPTION	BY	REV	DATE	DESCRIPTION	BY	
DESIGN				BASE			TELEPHONE											
STAKING				TOPOGRAPHY			ELECTRIC											
ASBUILT				PROFILE			CABLE TV											
CONTRACTOR				SANITARY SEWER			DESIGN											
INSPECTOR				STORM SEWER			QUANTITIES											
CONSTRUCTION RECORD				WATER			MUN. FINAL CHK.											
				GAS														

R&M
R&M Consultants, Inc.
9101 Vanguard Drive
Anchorage, Alaska 99507
907 522 1707 voice
907 522 3404 fax
www.rmconsult.com

MUNICIPALITY OF ANCHORAGE

PROJECT MANAGEMENT AND ENGINEERING DIVISION

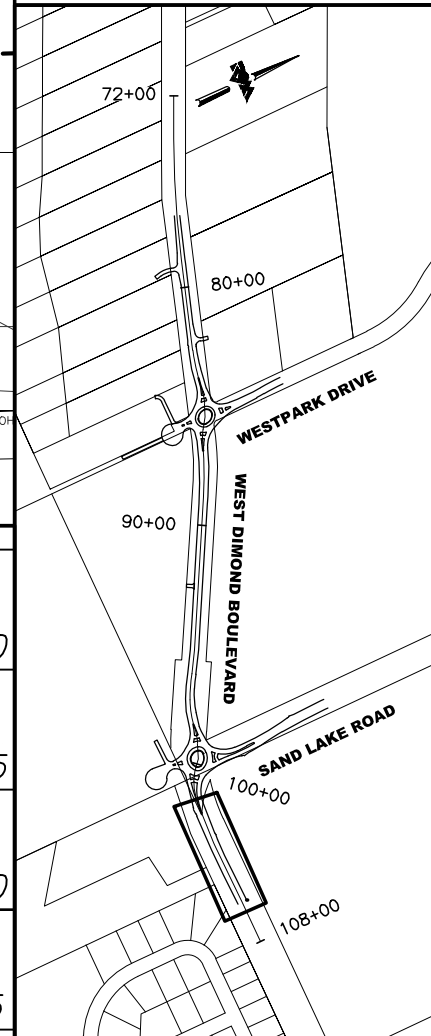
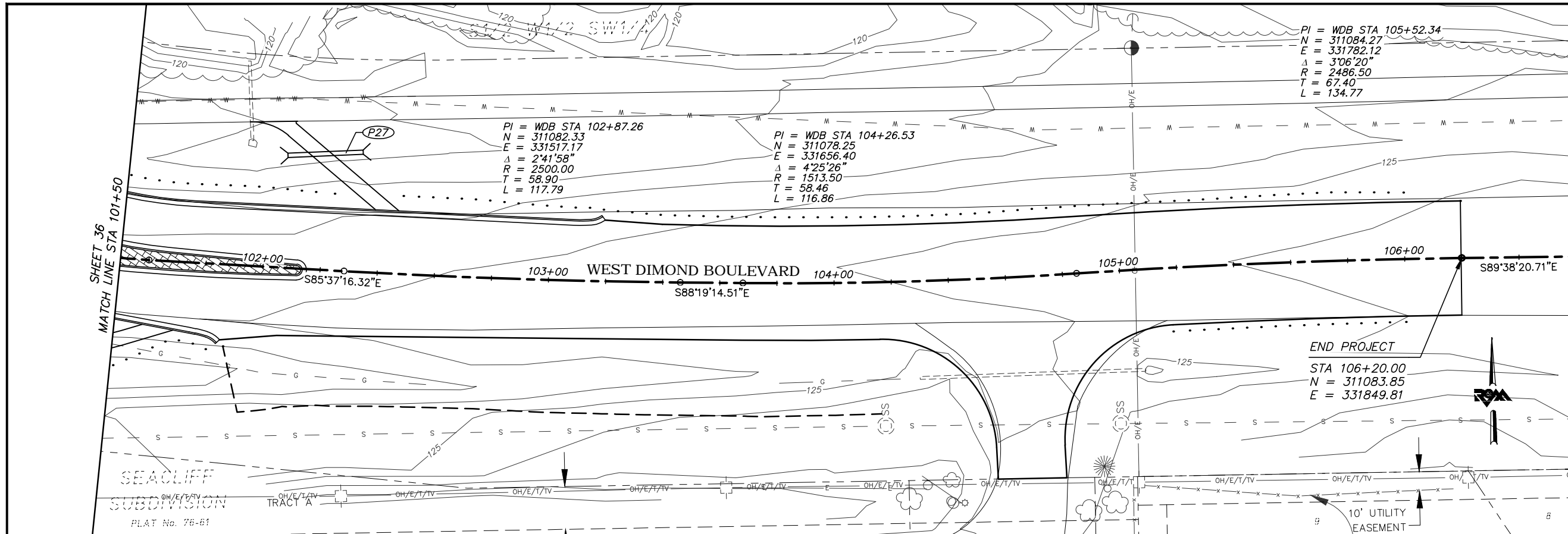
05-05 WEST DIMOND BOULEVARD UPGRADE
PHASE I: WESTPARK DRIVE TO SAND LAKE ROAD
PLAN AND PROFILE
WEST DIMOND BLVD - STA 96+50 TO STA 101+50

SCALE 1:20 H DATE 4/11/14 GRID 2323 2324
1:4 V ACCT. NO. 2423 2424 SHEET 36 of 76



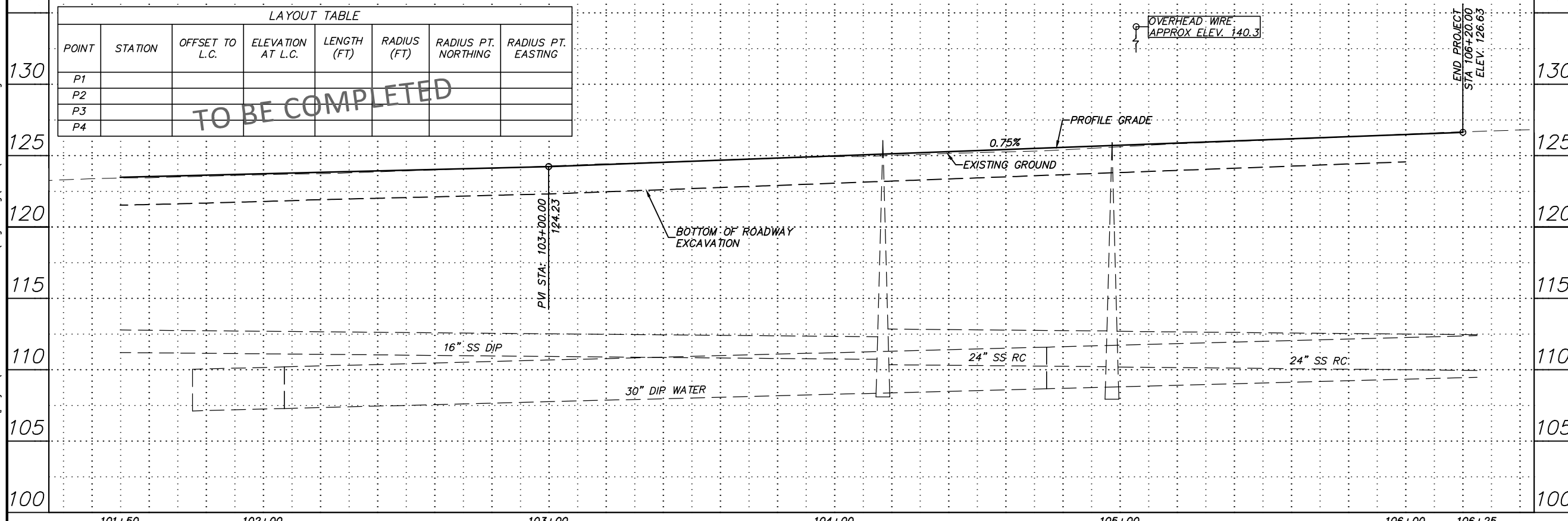
**BEFORE YOU DIG
CALL FOR FREE
UNDERGROUND
LOCATION**

LOCATE CALL CENTER OF ALASKA
STATEWIDE 800-478-3121 WILL
NOTIFY SUBSCRIBED UTILITIES ONLY.
OTHER UTILITIES NEED TO BE
CONTACTED INDIVIDUALLY.



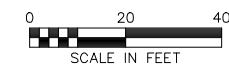
LAYOUT TABLE							
POINT	STATION	OFFSET TO L.C.	ELEVATION AT L.C.	LENGTH (FT)	RADIUS (FT)	RADIUS PT. NORTHING	RADIUS PT. EASTING
P1							
P2							
P3							
P4							

TO BE COMPLETED



KEYMAP

**65% DESIGN
APRIL 2014**



File Location: Z:\project\317.01 - West Dimond Blvd\Engineering\Acad\317.01 - E-P&Ps.dwg
Plotted: 4/11/2014 7:36 AM

FIELD BOOKS	BM NO.	LOCATION	ELEV.	DATA	DRAWN BY	CHECKED BY	DATA	DRAWN BY	CHECKED BY	REV	DATE	DESCRIPTION	BY	REV	DATE	DESCRIPTION	BY
DESIGN				BASE			TELEPHONE										
STAKING				TOPOGRAPHY			ELECTRIC										
ASBULT				PROFILE			CABLE TV										
CONTRACTOR				SANITARY SEWER			DESIGN										
INSPECTOR				STORM SEWER			QUANTITIES										
CONSTRUCTION RECORD				WATER			MUN. FINAL CHK.										
				GAS													

R&M Consultants, Inc.
9101 Vanguard Drive
Anchorage, Alaska 99507
907 522 1707 voice
907 522 3404 fax
www.rmconsult.com

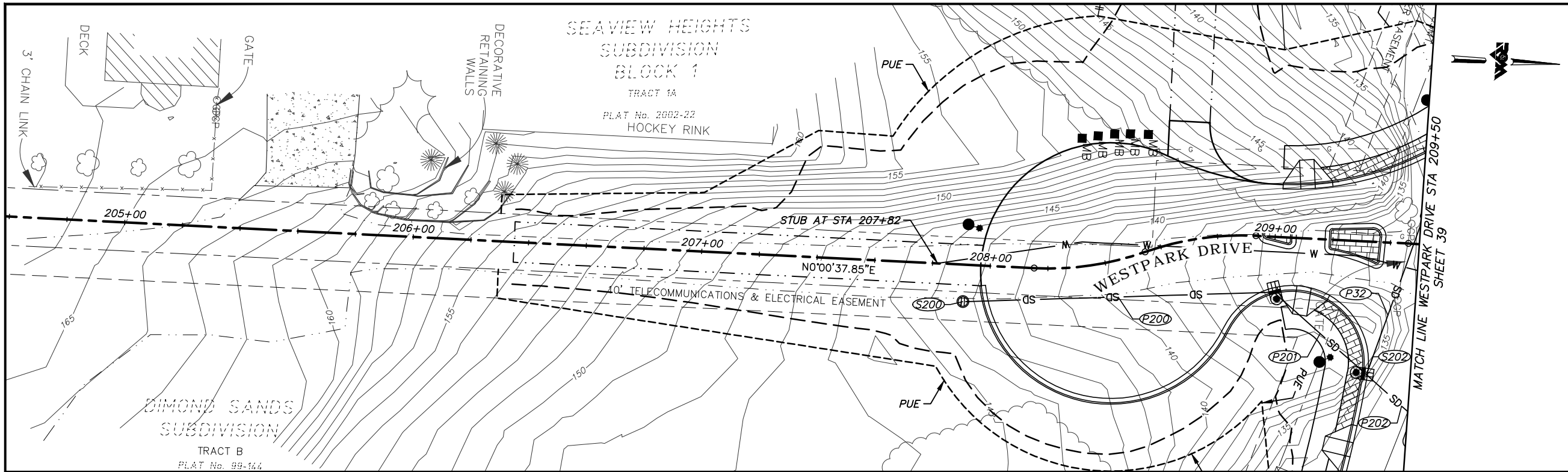
PROJECT MANAGEMENT AND
ENGINEERING DIVISION

05-05 WEST DIMOND BOULEVARD UPGRADE
PHASE I: WESTPARK DRIVE TO SAND LAKE ROAD
PLAN AND PROFILE
WEST DIMOND BLVD - STA 101+50 TO EOP

SCALE 1:20 H DATE 4/11/14 GRID 2323 2324
1:4 V ACCT. NO. 2423 2424 SHEET 37 of 76

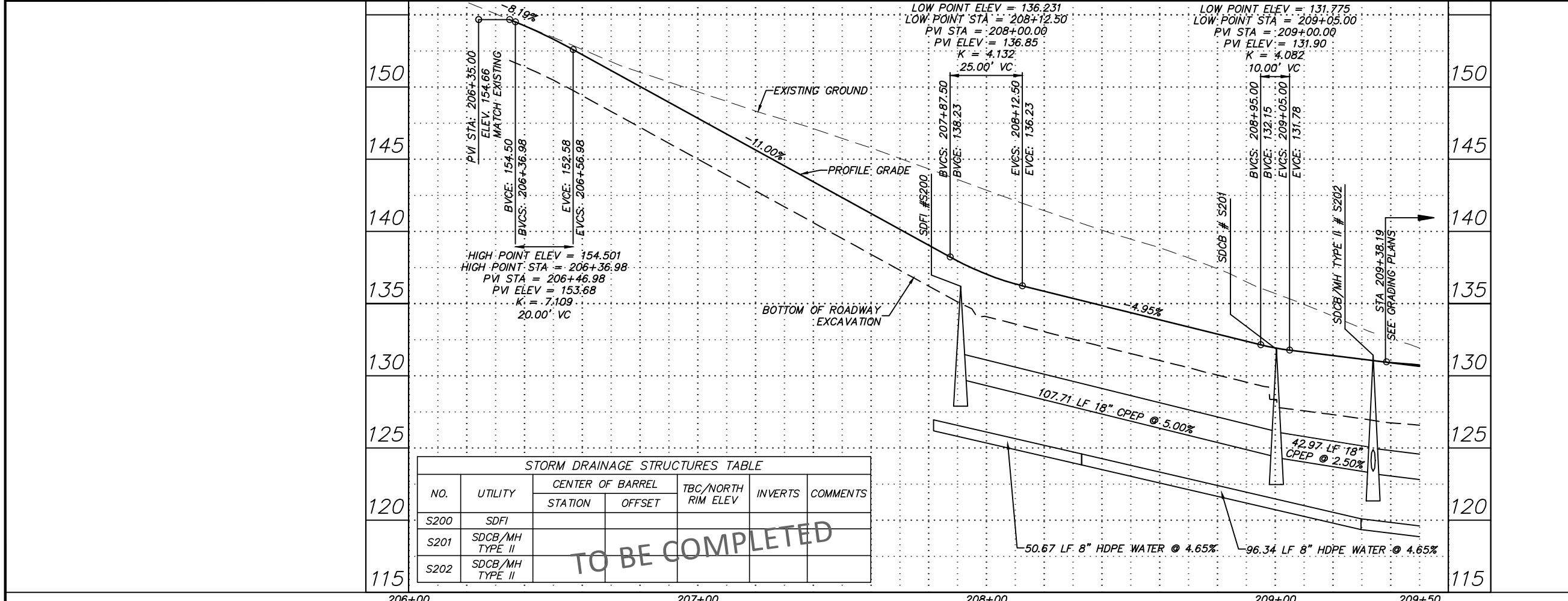
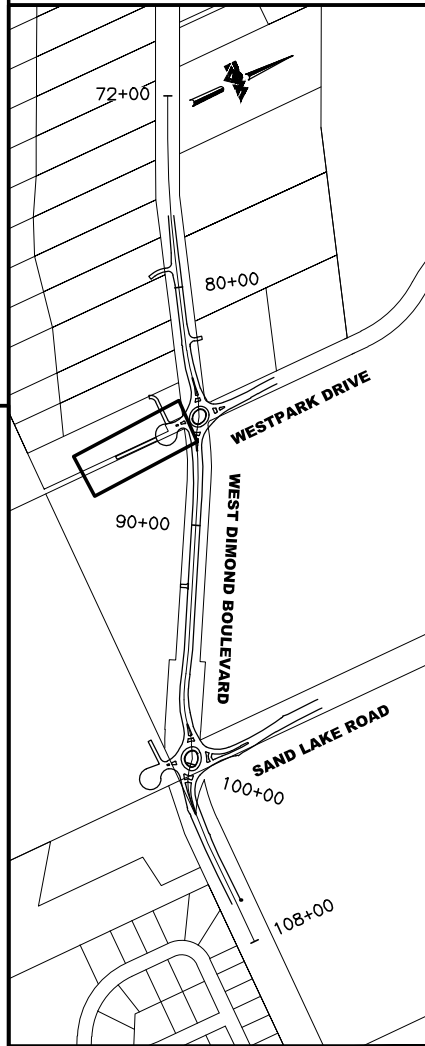
File Location: Z:\project\1317.01 - West Dimond Blvd\Engineering\Acad\1317-E-P&Ps.dwg

Plotted: 4/11/2014 7:36 AM



**BEFORE YOU DIG
CALL FOR FREE
UNDERGROUND
LOCATION**

LOCATE CALL CENTER OF ALASKA
STATEWIDE 800-478-3121 WILL
NOTIFY SUBSCRIBED UTILITIES ONLY.
OTHER UTILITIES NEED TO BE
CONTACTED INDIVIDUALLY.



NO.	UTILITY	CENTER OF BARREL		TBC/NORTH RIM ELEV	INVERTS	COMMENTS
		STATION	OFFSET			
S200	SDFI					
S201	SDCB/MH TYPE II					
S202	SDCB/MH TYPE II					

TO BE COMPLETED

KEYMAP

**65% DESIGN
APRIL 2014**

0 20 40
SCALE IN FEET

FIELD BOOKS	BM NO.	LOCATION	ELEV.	DATA	DRAWN BY	CHECKED BY	DATA	DRAWN BY	CHECKED BY	REV	DATE	DESCRIPTION	BY	REV	DATE	DESCRIPTION	BY	
DESIGN				BASE			TELEPHONE											
STAKING				TOPOGRAPHY			ELECTRIC											
ASBULT				PROFILE			CABLE TV											
CONTRACTOR				SANITARY SEWER			DESIGN											
INSPECTOR				STORM SEWER			QUANTITIES											
CONSTRUCTION RECORD				WATER			MUN. FINAL CHK.											
				GAS														

R&M

R&M Consultants, Inc.
9101 Vanguard Drive
Anchorage, Alaska 99507
907 522 1707 voice
907 522 3404 fax
www.rmconsult.com

MUNICIPALITY OF ANCHORAGE

**PROJECT MANAGEMENT AND
ENGINEERING DIVISION**

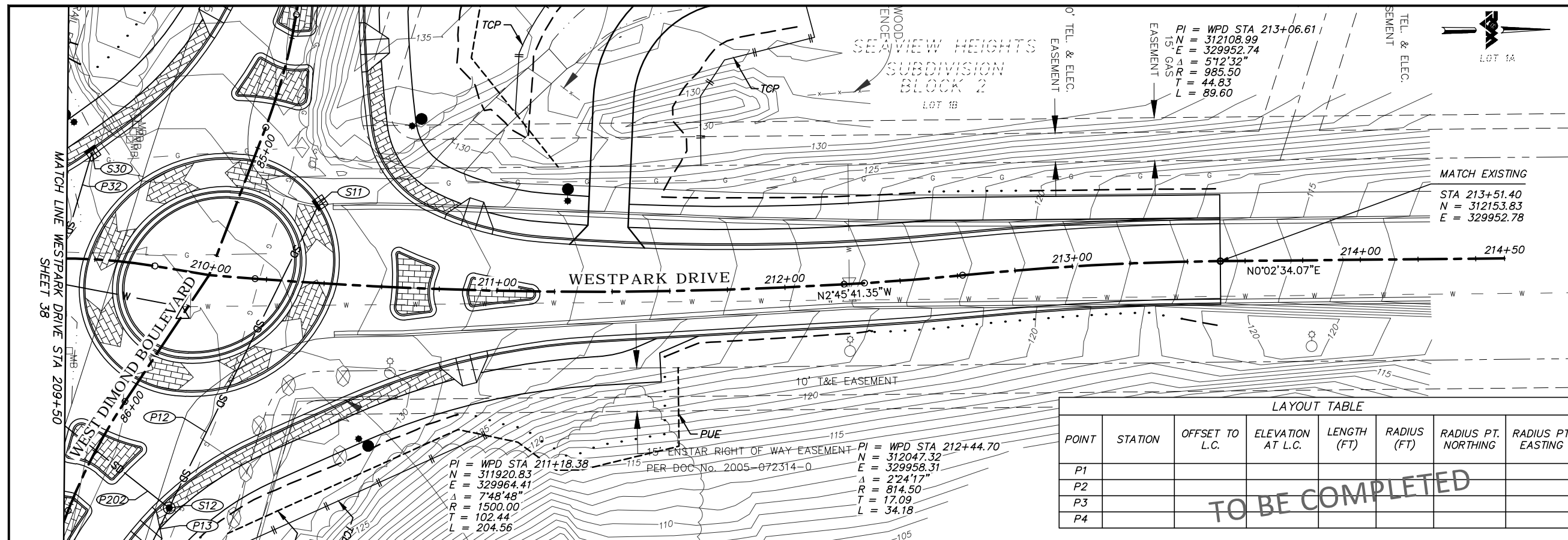
05-05 WEST DIMOND BOULEVARD UPGRADE
PHASE I: WESTPARK DRIVE TO SAND LAKE ROAD
PLAN AND PROFILE
WESTPARK DRIVE - STA 206+00 TO 209+50

SCALE 1:20 H DATE 4/11/14 GRID 2323 2324
1:4 V ACCT. NO. 2423 2424 SHEET 38 of 76



**BEFORE YOU DIG
CALL FOR FREE
UNDERGROUND
LOCATION**

LOCATE CALL CENTER OF ALASKA
STATEWIDE 800-478-3121 WILL
NOTIFY SUBSCRIBED UTILITIES ONLY.
OTHER UTILITIES NEED TO BE
CONTACTED INDIVIDUALLY.



LAYOUT TABLE

POINT	STATION	OFFSET TO L.C.	ELEVATION AT L.C.	LENGTH (FT)	RADIUS (FT)	RADIUS PT. NORTHING	RADIUS PT. EASTING
P1							
P2							
P3							
P4							

TO BE COMPLETED

STORM DRAINAGE STRUCTURES TABLE

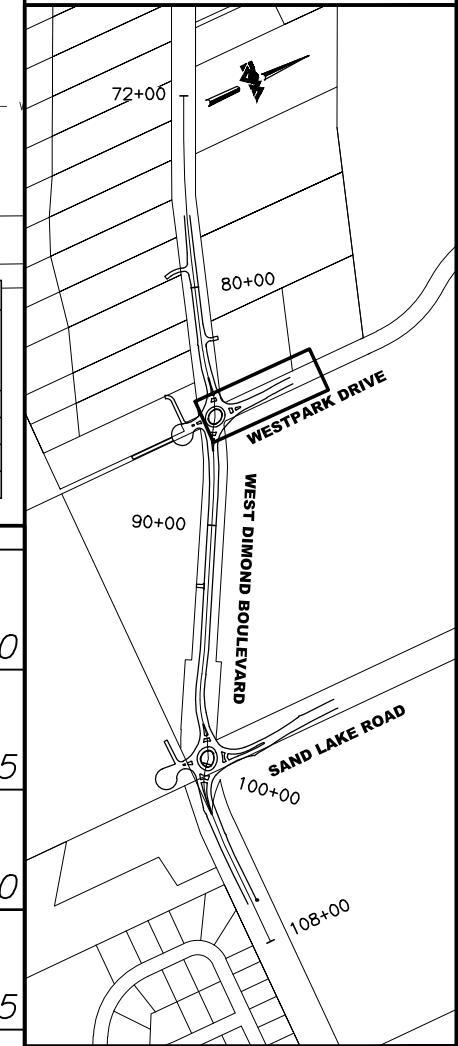
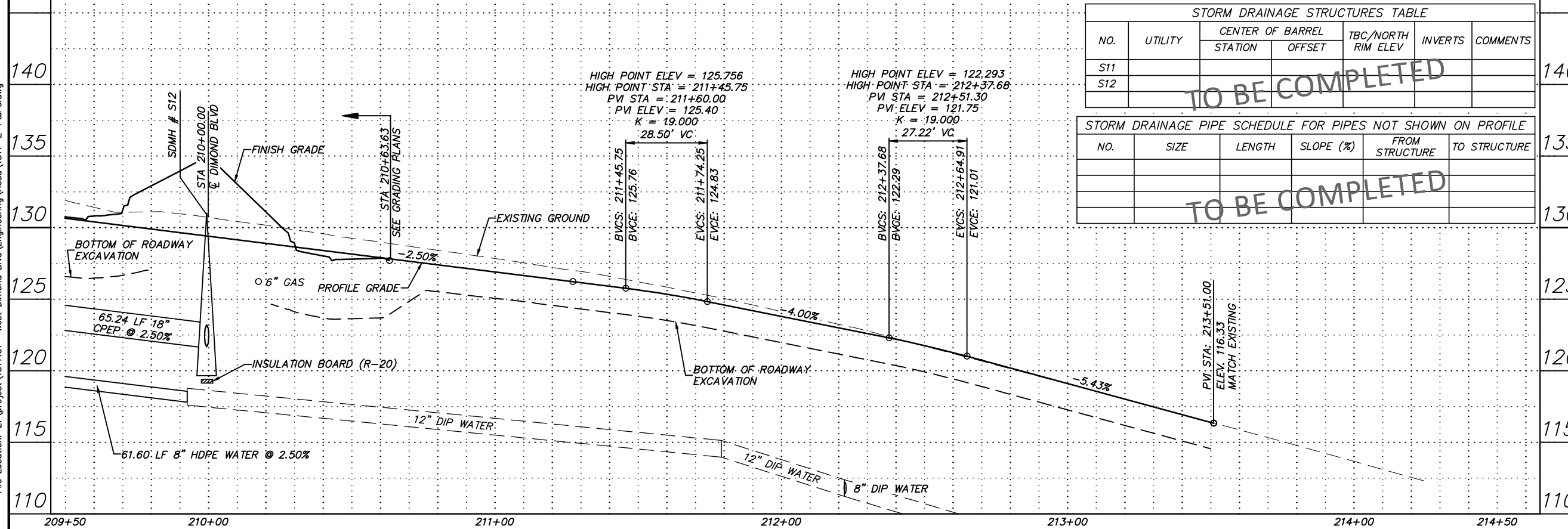
NO.	UTILITY	CENTER OF BARREL		TBC/NORTH RIM ELEV	INVERTS	COMMENTS
		STATION	OFFSET			
S11						
S12						

TO BE COMPLETED

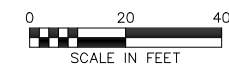
STORM DRAINAGE PIPE SCHEDULE FOR PIPES NOT SHOWN ON PROFILE

NO.	SIZE	LENGTH	SLOPE (%)	FROM STRUCTURE TO STRUCTURE	

TO BE COMPLETED



**65% DESIGN
APRIL 2014**



File Location: Z:\project\317.01 - West Dimond Blvd\Engineering\Acad\317.01-E-P&Ps.dwg
Plotted: 4/11/2014 7:36 AM

FIELD BOOKS	BM NO.	LOCATION	ELEV.	DATA	DRAWN BY	CHECKED BY	DATA	DRAWN BY	CHECKED BY	REV	DATE	DESCRIPTION	BY	REV	DATE	DESCRIPTION	BY
DESIGN				BASE			TELEPHONE										
STAKING				TOPOGRAPHY			ELECTRIC										
ASBULT				PROFILE			CABLE TV										
CONTRACTOR				SANITARY SEWER			DESIGN										
INSPECTOR				STORM SEWER			QUANTITIES										
CONSTRUCTION RECORD				WATER			MUN. FINAL CHK.										
				GAS													

R&M Consultants, Inc.
9101 Vanguard Drive
Anchorage, Alaska 99507
907 522 1707 voice
907 522 3404 fax
www.rmconsult.com

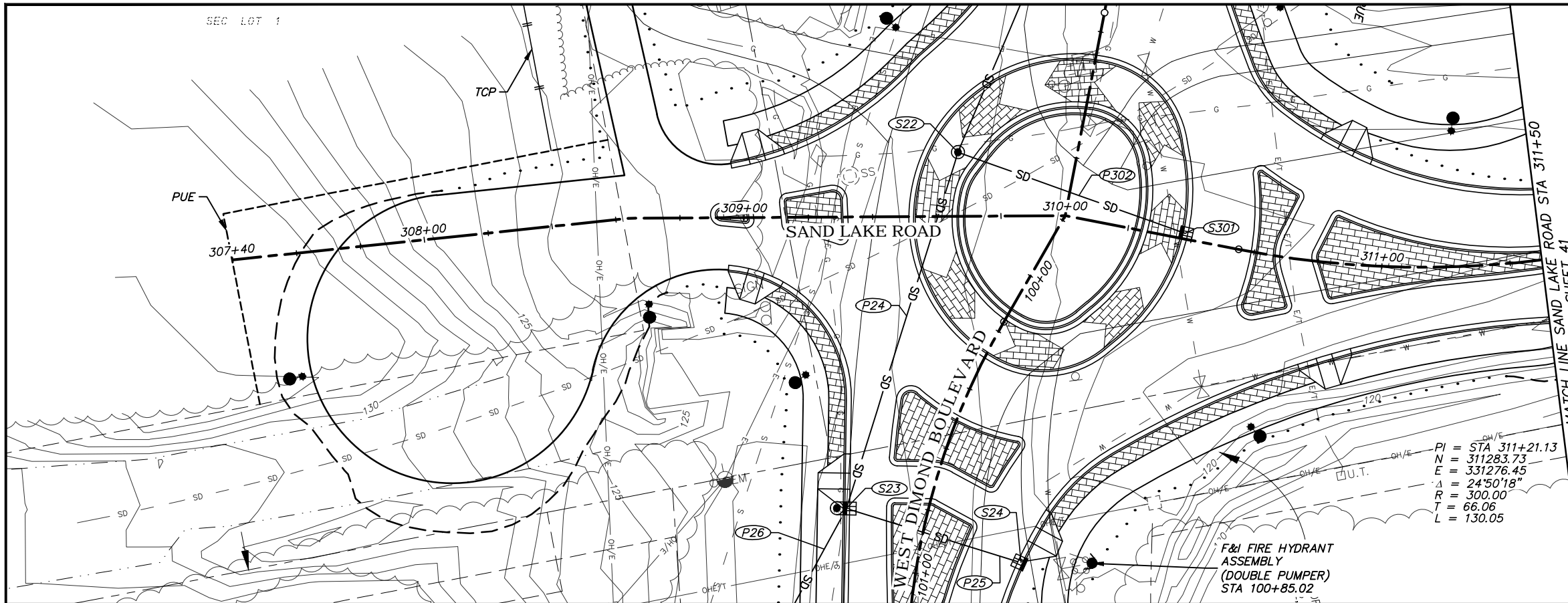


PROJECT MANAGEMENT AND
ENGINEERING DIVISION

05-05 WEST DIMOND BOULEVARD UPGRADE
PHASE I: WESTPARK DRIVE TO SAND LAKE ROAD
PLAN AND PROFILE
WESTPARK DRIVE - STA 209+50 TO 213+50

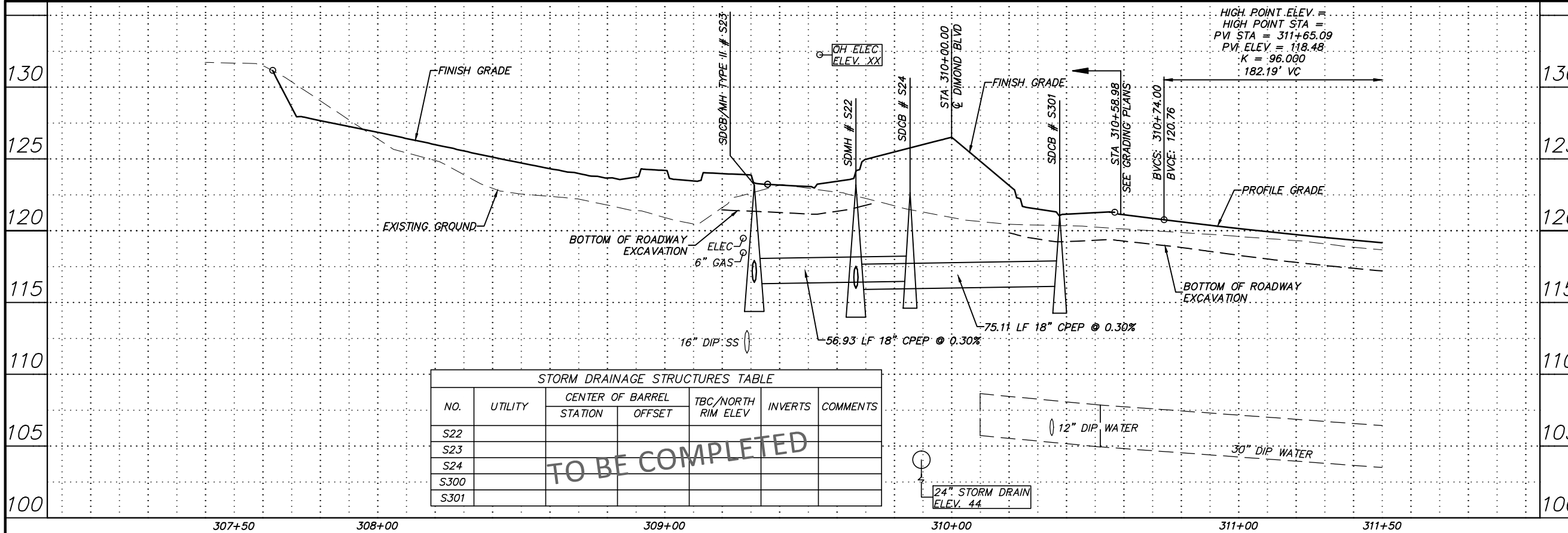
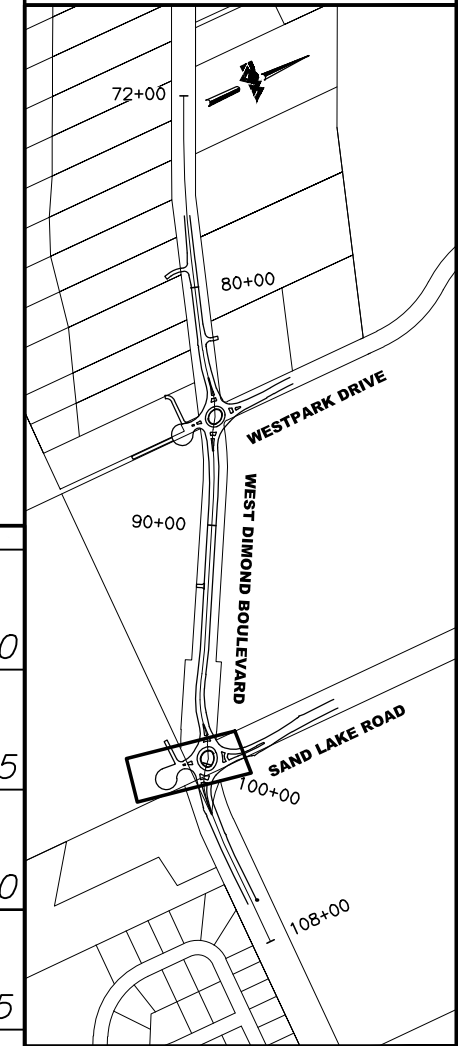
SCALE 1:20 H DATE 4/11/14 GRID 2323 2324
1:4 V ACCT. NO. 2423 2424 SHEET 39 of 76

SEC LOT 1



**BEFORE YOU DIG
CALL FOR FREE
UNDERGROUND
LOCATION**

LOCATE CALL CENTER OF ALASKA
STATEWIDE 800-478-3121 WILL
NOTIFY SUBSCRIBED UTILITIES ONLY.
OTHER UTILITIES NEED TO BE
CONTACTED INDIVIDUALLY.



NO.	UTILITY	CENTER OF BARREL		TBC/NORTH RIM ELEV	INVERTS	COMMENTS
		STATION	OFFSET			
S22						
S23						
S24						
S300						
S301						

TO BE COMPLETED

**65% DESIGN
APRIL 2014**



File Location: Z:\project\1317.01 - West Dimond Blvd\Engineering\Acad\1317-E-P&Ps.dwg

FIELD BOOKS	BM NO.	LOCATION	ELEV.	DATA	DRAWN BY	CHECKED BY	DATA	DRAWN BY	CHECKED BY	REV	DATE	DESCRIPTION	BY	REV	DATE	DESCRIPTION	BY
DESIGN				BASE			TELEPHONE										
STAKING				TOPOGRAPHY			ELECTRIC										
ASBULT				PROFILE			CABLE TV										
CONTRACTOR				SANITARY SEWER			DESIGN										
INSPECTOR				STORM SEWER			QUANTITIES										
CONSTRUCTION RECORD				WATER			MUN. FINAL CHK.										
				GAS													

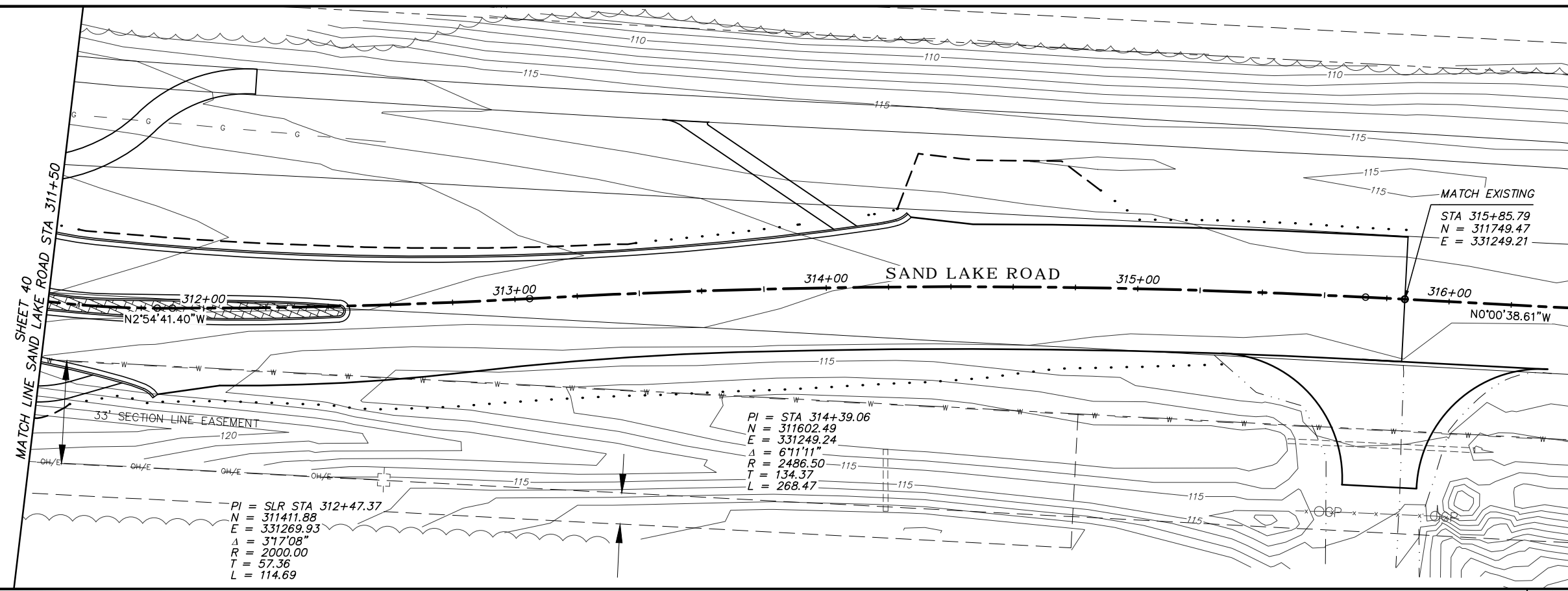
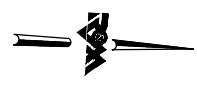
R&M Consultants, Inc.
9101 Vanguard Drive
Anchorage, Alaska 99507
907 522 1707 voice
907 522 3404 fax
www.rmconsult.com



PROJECT MANAGEMENT AND ENGINEERING DIVISION

05-05 WEST DIMOND BOULEVARD UPGRADE
PHASE I: WESTPARK DRIVE TO SAND LAKE ROAD
PLAN AND PROFILE
SAND LAKE ROAD - STA 307+40 TO 311+50

SCALE 1:20 H DATE 4/11/14 GRID 2323 2324
1:4 V ACCT. NO. 2423 2424 SHEET 40 of 76



MATCH LINE SAND LAKE ROAD STA 311+50

MATCH LINE SAND LAKE ROAD STA 316+00

N2°54'41.40"W

MATCH EXISTING
STA 315+85.79
N = 311749.47
E = 331249.21

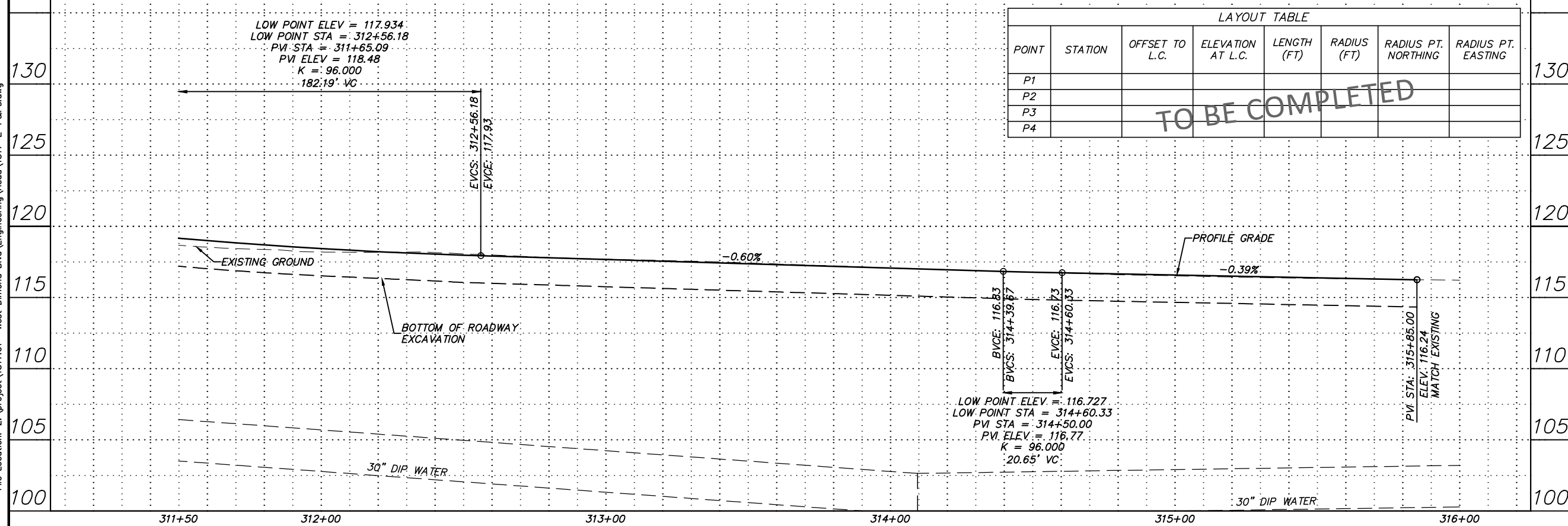
PI = SLR STA 312+47.37
N = 311411.88
E = 331269.93
Δ = 3°17'08"
R = 2000.00
T = 57.36
L = 114.69

PI = STA 314+39.06
N = 311602.49
E = 331249.24
Δ = 6°11'11"
R = 2486.50
T = 134.37
L = 268.47

LOW POINT ELEV = 117.934
LOW POINT STA = 312+56.18
PVI STA = 311+65.09
PVI ELEV = 118.48
K = 96.000
182.19' VC

LAYOUT TABLE							
POINT	STATION	OFFSET TO L.C.	ELEVATION AT L.C.	LENGTH (FT)	RADIUS (FT)	RADIUS PT. NORTHING	RADIUS PT. EASTING
P1							
P2							
P3							
P4							

TO BE COMPLETED

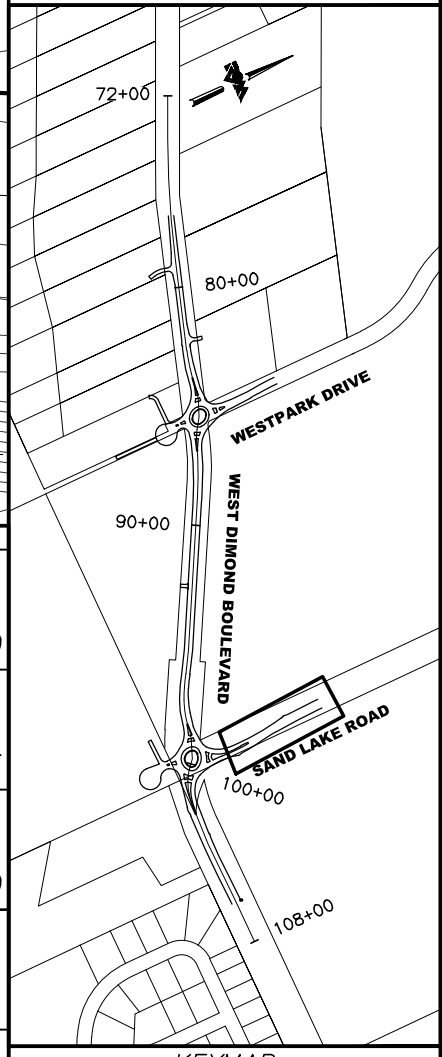


LOW POINT ELEV = 116.727
LOW POINT STA = 314+60.33
PVI STA = 314+50.00
PVI ELEV = 116.77
K = 96.000
20.65' VC

PVI STA: 315+85.00
ELEV: 116.24
MATCH EXISTING

**BEFORE YOU DIG
CALL FOR FREE
UNDERGROUND
LOCATION**

LOCATE CALL CENTER OF ALASKA
STATEWIDE 800-478-3121 WILL
NOTIFY SUBSCRIBED UTILITIES ONLY.
OTHER UTILITIES NEED TO BE
CONTACTED INDIVIDUALLY.



**65% DESIGN
APRIL 2014**



File Location: Z:\project\317.01 - West Dimond Blvd\Engineering\Acad\317-E-P&Ps.dwg
Plotted: 4/11/2014 7:36 AM

FIELD BOOKS	BM NO.	LOCATION	ELEV.	DATA	DRAWN BY	CHECKED BY	DATA	DRAWN BY	CHECKED BY	REV	DATE	DESCRIPTION	BY	REV	DATE	DESCRIPTION	BY	
DESIGN				BASE			TELEPHONE											
STAKING				TOPOGRAPHY			ELECTRIC											
ASBULT				PROFILE			CABLE TV											
CONTRACTOR				SANITARY SEWER			DESIGN											
INSPECTOR				STORM SEWER			QUANTITIES											
CONSTRUCTION RECORD				WATER			MUN. FINAL CHK.											
				GAS														

R&M
R&M Consultants, Inc.
9101 Vanguard Drive
Anchorage, Alaska 99507
907 522 1707 voice
907 522 3404 fax
www.rmconsult.com

MUNICIPALITY OF ANCHORAGE

SEAL

**PROJECT MANAGEMENT AND
ENGINEERING DIVISION**

05-05 WEST DIMOND BOULEVARD UPGRADE
PHASE I: WESTPARK DRIVE TO SAND LAKE ROAD
PLAN AND PROFILE
SAND LAKE ROAD - STA 311+50 TO 316+00

SCALE 1:20 H DATE 4/11/14 GRID 2323 2324
1:4 V ACCT. NO. 2423 2424 SHEET 41 of 76