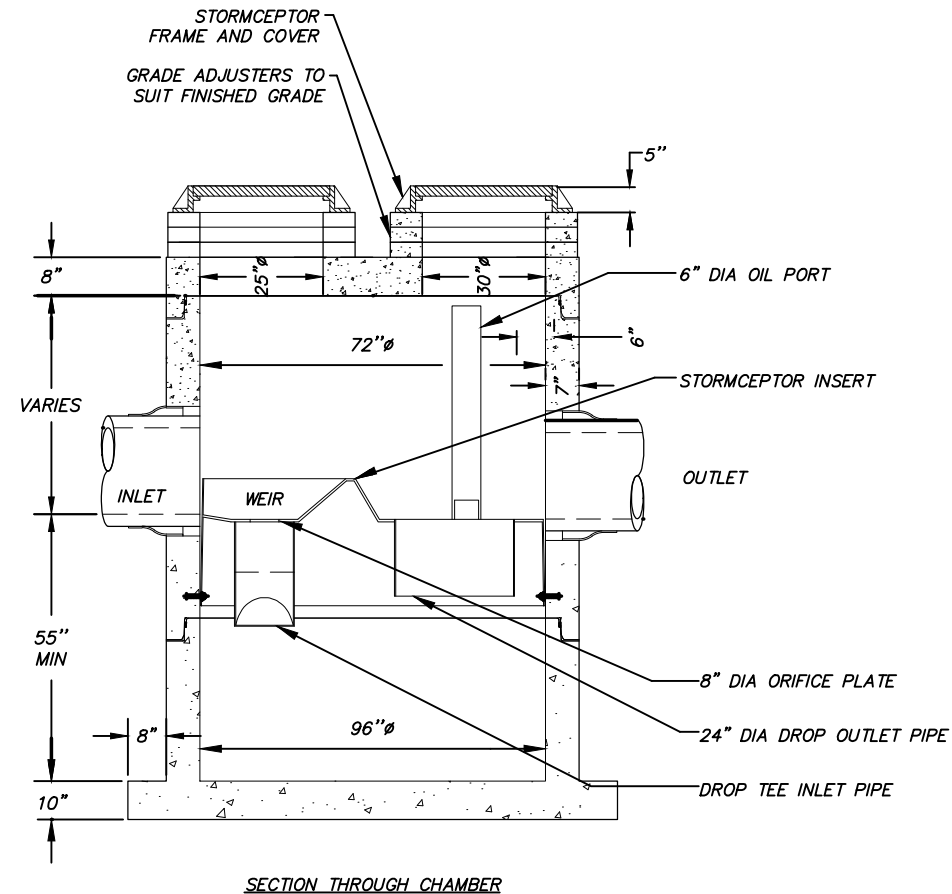
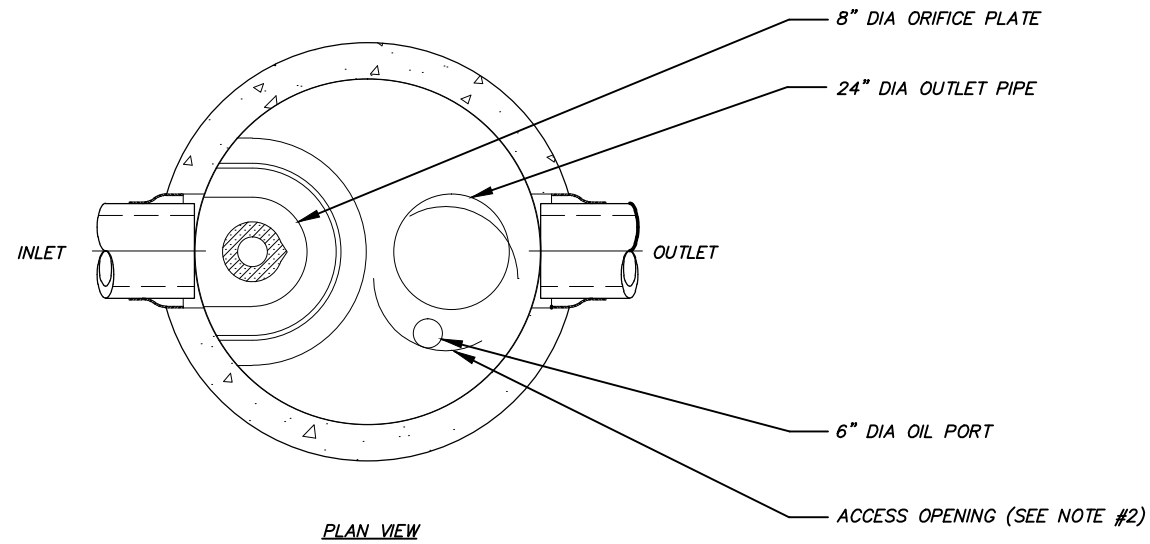


Plotted: 4/11/2014 7:38 AM File Location: Z:\project\1317.01- West Dimond Blvd\Engineering\Acad\1317-H-Details.dwg



SECTION THROUGH CHAMBER

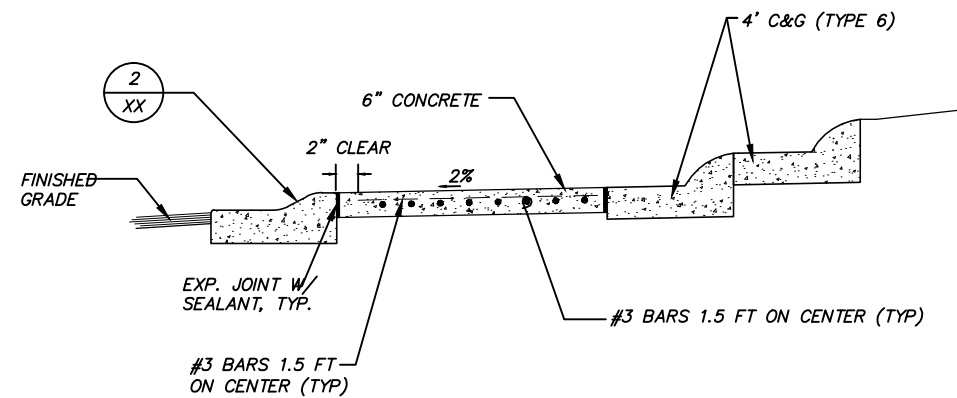


PLAN VIEW

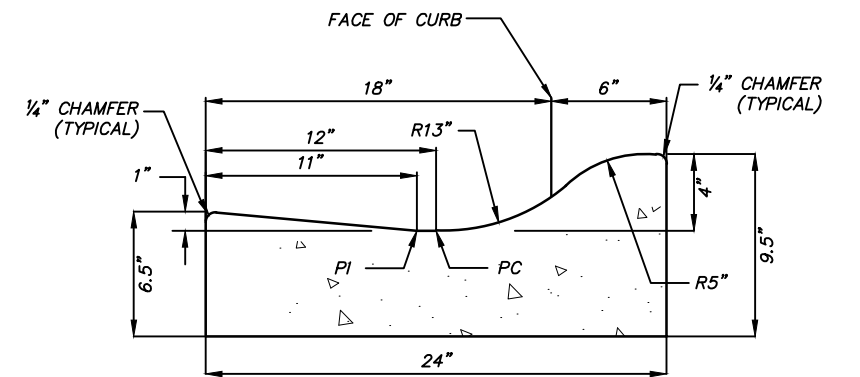
NOTES:

1. THE USE OF FLEXIBLE CONNECTION IS RECOMMENDED AT THE INLET AND OUTLET WHERE APPLICABLE.
2. THE 30"Ø OPENING WILL BE POSITIONED OVER THE OUTLET DROP PIPE AND THE OIL PORT. THE 25"Ø OPENING WILL BE POSITIONED OVER THE INLET DROP TEE.
3. THE STORMCEPTOR SYSTEM IS PROTECTED BY ONE OR MORE OF THE FOLLOWING U.S. PATENTS: #4985148, #5498331, #5725760, #5753115, #5849181, #8068765, #6371690.
4. CONTACT A CONCRETE PIPE DIVISION REPRESENTATIVE FOR FURTHER DETAILS NOT LISTED ON THIS DRAWING.
5. CONTRACTOR IS RESPONSIBLE TO MAKE ARRANGEMENTS WITH THE PRECASTER TO CAST THE "FILLET" PRIOR TO DELIVERY.
6. DIMENSIONS MAY VARY WITH LOCAL MANUFACTURER, D&S CONCRETE INC., 2140 E. 84TH COURT, ANCHORAGE, AK 99507.

1 STORMCEPTOR STC 900  
XX NTS



2 TRUCK APRON CROSS-SECTION  
XX NTS



3 4" ROUNDABOUT TRUCK APRON CURB & GUTTER  
XX NTS

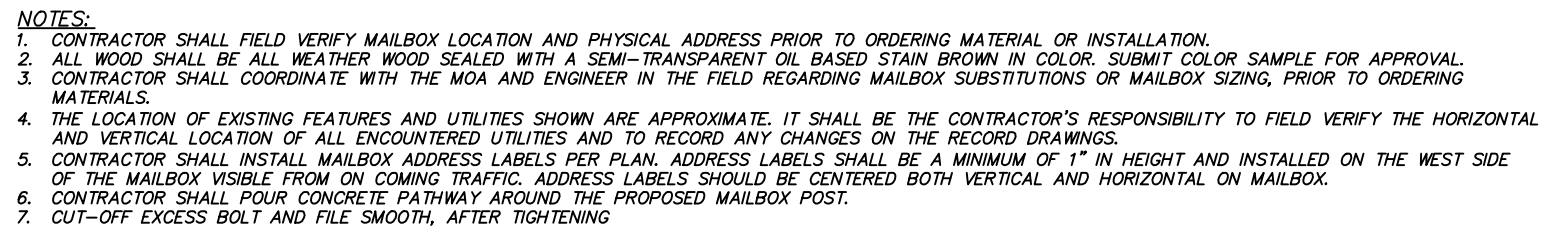
65% DESIGN  
APRIL 2014

FIELD BOOKS	BM NO.	LOCATION	ELEV.	DATA	DRAWN BY	CHECKED BY	DATA	DRAWN BY	CHECKED BY	REV	DATE	DESCRIPTION	BY	REV	DATE	DESCRIPTION	BY
DESIGN				BASE			TELEPHONE										
STAKING				TOPOGRAPHY			ELECTRIC										
ASBUILT				PROFILE			CABLE TV										
CONTRACTOR				SANITARY SEWER			DESIGN										
INSPECTOR				STORM SEWER			QUANTITIES										
				WATER			MUN. FINAL CHK.										
				GAS													
CONSTRUCTION RECORD																	

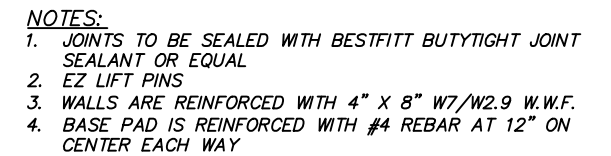
**R&M**  
R&M Consultants, Inc.  
9101 Vanguard Drive  
Anchorage, Alaska 99507  
907 522 1707 voice  
907 522 3404 fax  
www.rmconsult.com



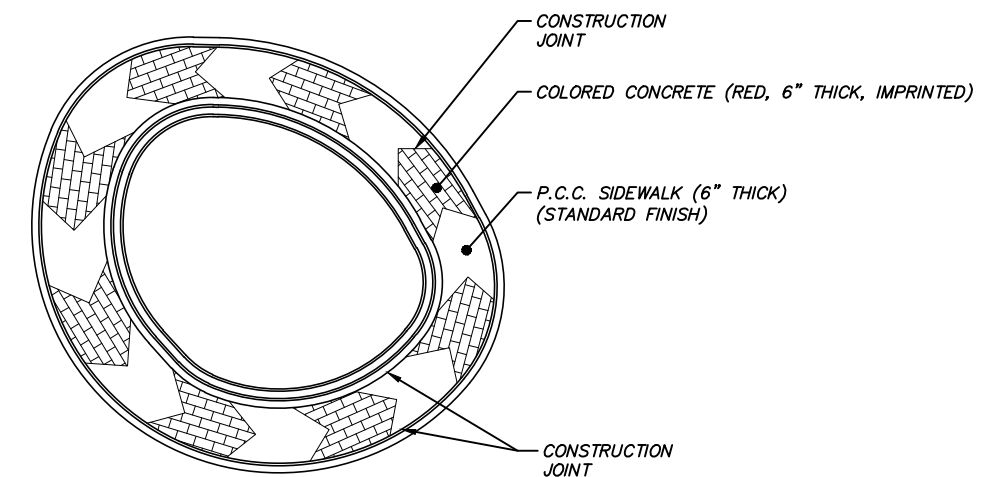
PROJECT MANAGEMENT AND ENGINEERING DIVISION					
05-05 WEST DIMOND BOULEVARD UPGRADE PHASE I: WESTPARK DRIVE TO SAND LAKE ROAD					
DETAILS					
SCALE	DATE	4/11/14	GRID	2323 2324 2423 2424	SHEET 53 of 76
	ACCT. NO.				



3 MAILBOX INSTALLATION  
XX NTS

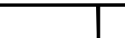



2 TYPE II CATCH BASIN MANHOLE  
XX NTS



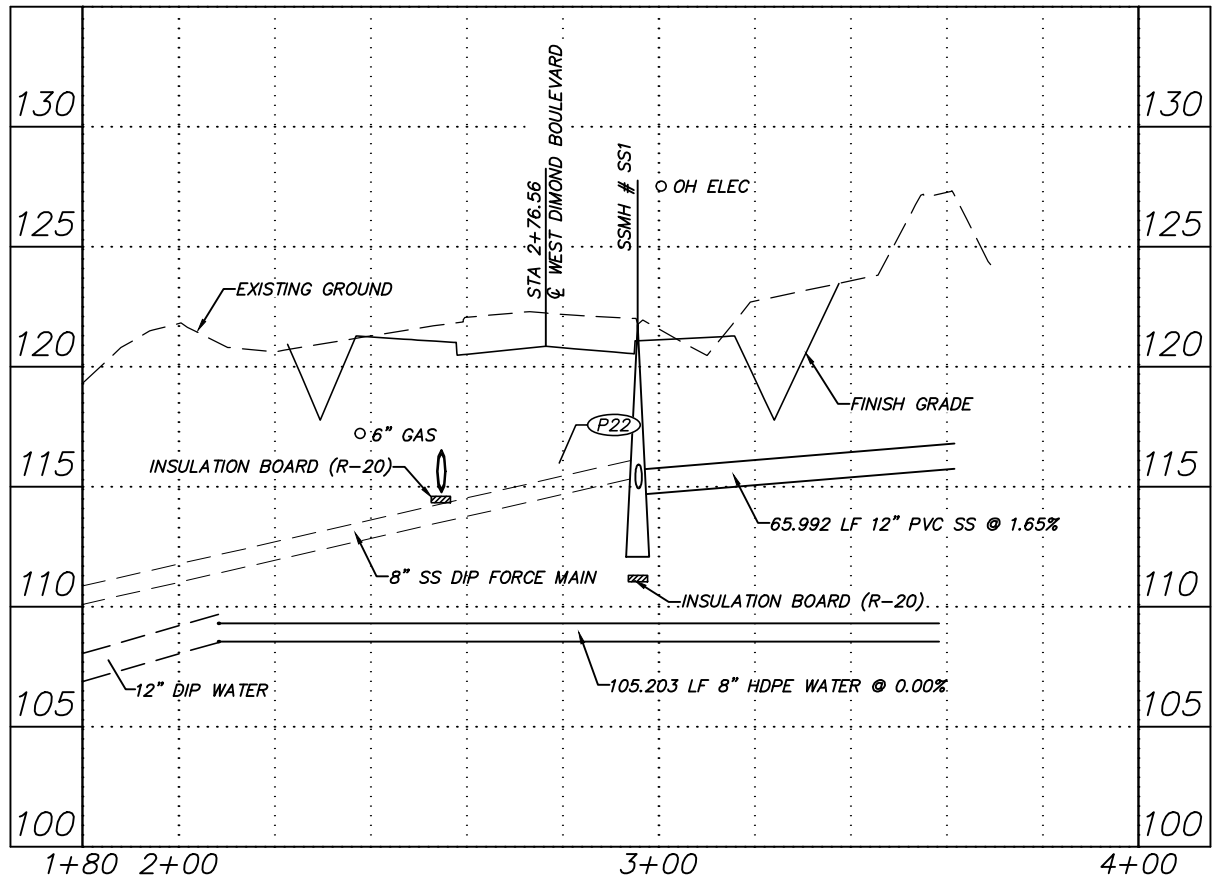
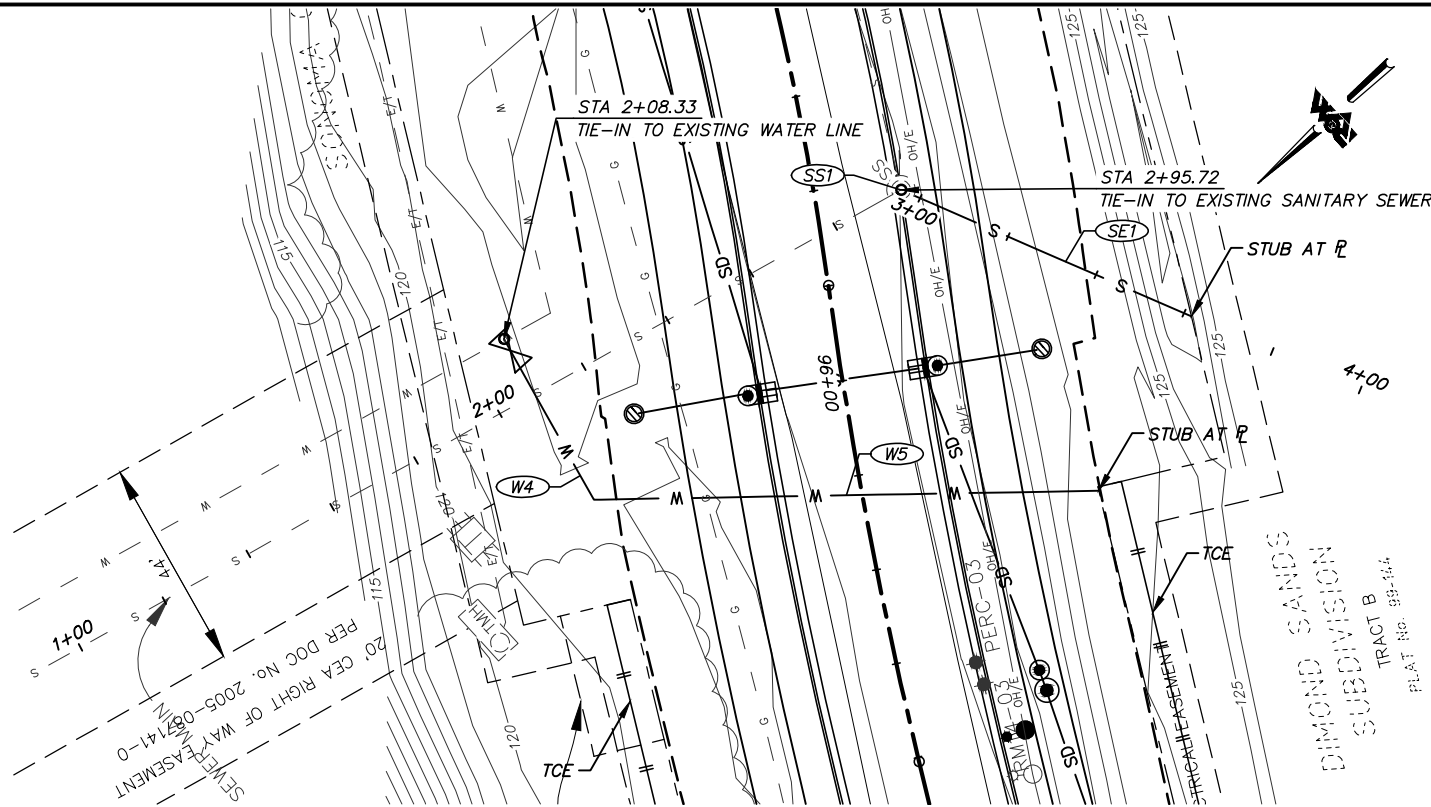
4 ROUNDABOUT CHEVRON CONCRETE PATTERN LAYOUT  
XX NTS

65% DESIGN  
APRIL 2014

																		  R&M Consultants, Inc. 9101 Vanguard Drive Anchorage, Alaska 99507 907 522 1707 voice 907 522 3404 fax www.rmconsult.com		PROJECT MANAGEMENT AND ENGINEERING DIVISION			
FIELD BOOKS		BM NO.	LOCATION	ELEV.	DATA	DRAWN BY	CHECKED BY	DATA	DRAWN BY	CHECKED BY	REV	DATE	DESCRIPTION	BY	REV	DATE	DESCRIPTION			BY	05-05	WEST DIMOND BOULEVARD UPGRADE PHASE I: WESTPARK DRIVE TO SAND LAKE ROAD	
DESIGN					BASE			TELEPHONE														DETAILS	
STAKING					TOPOGRAPHY			ELECTRIC															
					PROFILE			CABLE TV															
ASBUILT					SANITARY SEWER			DESIGN															
CONTRACTOR	BASIS OF THIS DATUM				WATER			MUN. FINAL CHK.															
INSPECTOR					GAS																		
CONSTRUCTION RECORD		VERTICAL DATUM			PLAN CHECK				REVISIONS				CONSULTANT		SEAL		SCALE		DATE 4/11/14 GRID 2323 2324 ACCT. NO. 2423 2424		SHEET 54 of 76		



Plotted: 4/11/2014 7:39 AM File Location: Z:\project\1317.01- West Dimond Blvd\Engineering\Acad\1317-G-Driveways.dwg



DIMOND SANDS WATER & SEWER CONNECTION

SANITARY SEWER PIPE & STRUCTURE SCHEDULE					
NO.	SIZE	LENGTH	SLOPE (%)	FROM STRUCTURE	TO STRUCTURE
SS1					
SP1					
TO BE COMPLETED					

WATER PIPE SCHEDULE					
NO.	SIZE	LENGTH	SLOPE (%)	FROM STRUCTURE	TO STRUCTURE
W4					
W5					
TO BE COMPLETED					



65% DESIGN  
APRIL 2014

FIELD BOOKS	BM NO.	LOCATION	ELEV.	DATA	DRAWN BY	CHECKED BY	DATA	DRAWN BY	CHECKED BY	REV	DATE	DESCRIPTION	BY	REV	DATE	DESCRIPTION	BY
DESIGN				BASE			TELEPHONE										
STAKING				TOPOGRAPHY			ELECTRIC										
				PROFILE			CABLE TV										
ASBUILT				SANITARY SEWER			DESIGN										
CONTRACTOR				STORM SEWER			QUANTITIES										
INSPECTOR				WATER			MUN. FINAL CHK.										
				GAS													
CONSTRUCTION RECORD				VERTICAL DATUM				PLAN CHECK				REVISIONS				CONSULTANT	

**R&M**  
R&M Consultants, Inc.  
9101 Vanguard Drive  
Anchorage, Alaska 99507  
907 522 1707 voice  
907 522 3404 fax  
www.rmconsult.com



PROJECT MANAGEMENT AND ENGINEERING DIVISION			
05-05	WEST DIMOND BOULEVARD UPGRADE PHASE I: WESTPARK DRIVE TO SAND LAKE ROAD GRADING TABLES DIMOND SANDS WATER & SEWER DETAILS		
SCALE	1:20 H 1:4 V	DATE	4/11/14
		GRID	2323 2324 2423 2424
		ACCT. NO.	
SHEET		56	of 76