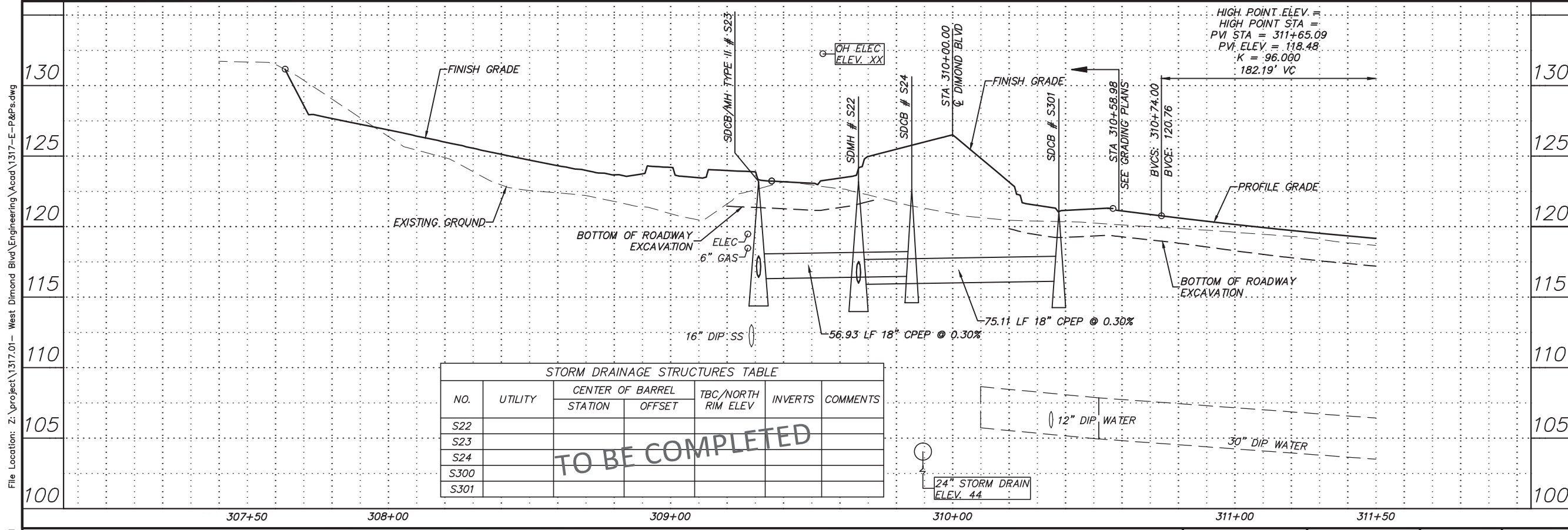
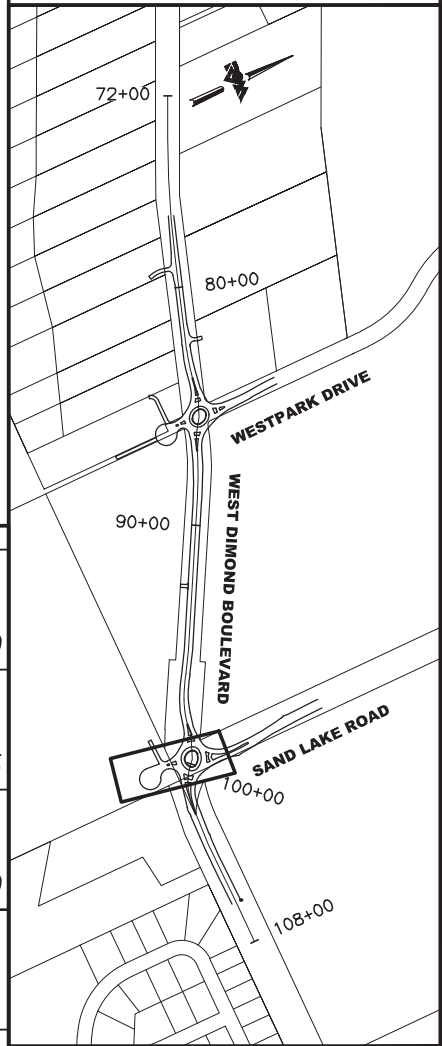


**BEFORE YOU DIG
CALL FOR FREE
UNDERGROUND
LOCATION**

LOCATE CALL CENTER OF ALASKA
STATEWIDE 800-478-3121 WILL
NOTIFY SUBSCRIBED UTILITIES ONLY.
OTHER UTILITIES NEED TO BE
CONTACTED INDIVIDUALLY.



STORM DRAINAGE STRUCTURES TABLE

NO.	UTILITY	CENTER OF BARREL		TBC/NORTH RIM ELEV	INVERTS	COMMENTS
		STATION	OFFSET			
S22						
S23						
S24						
S300						
S301						

TO BE COMPLETED

65% DESIGN
APRIL 2014



FIELD BOOKS	BM NO.	LOCATION	ELEV.	DATA	DRAWN BY	CHECKED BY	DATA	DRAWN BY	CHECKED BY	REV	DATE	DESCRIPTION	BY	REV	DATE	DESCRIPTION	BY	
DESIGN				BASE			TELEPHONE											
STAKING				TOPOGRAPHY			ELECTRIC											
ASBUILT				PROFILE			CABLE TV											
CONTRACTOR				SANITARY SEWER			DESIGN											
INSPECTOR				STORM SEWER			QUANTITIES											
CONSTRUCTION RECORD				WATER			MUN. FINAL CHK.											
				GAS														

R&M Consultants, Inc.
9101 Vanguard Drive
Anchorage, Alaska 99507
907 522 1707 voice
907 522 3404 fax
www.rmconsult.com



**PROJECT MANAGEMENT AND
ENGINEERING DIVISION**

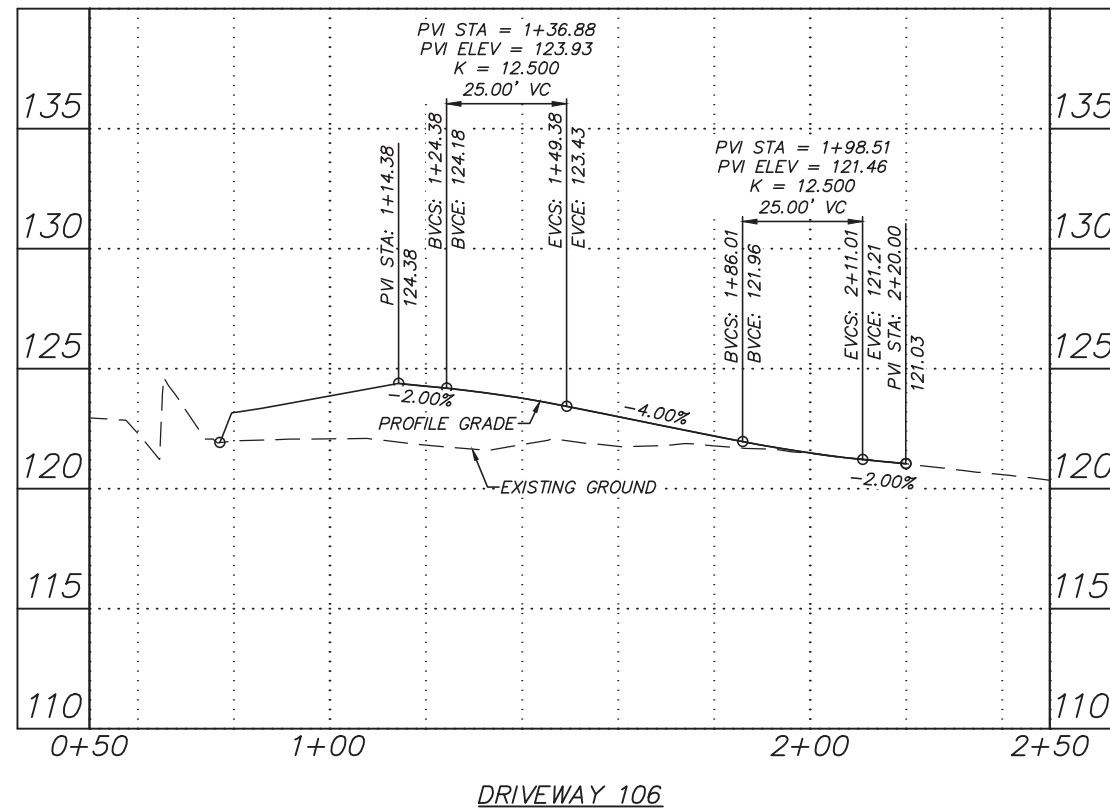
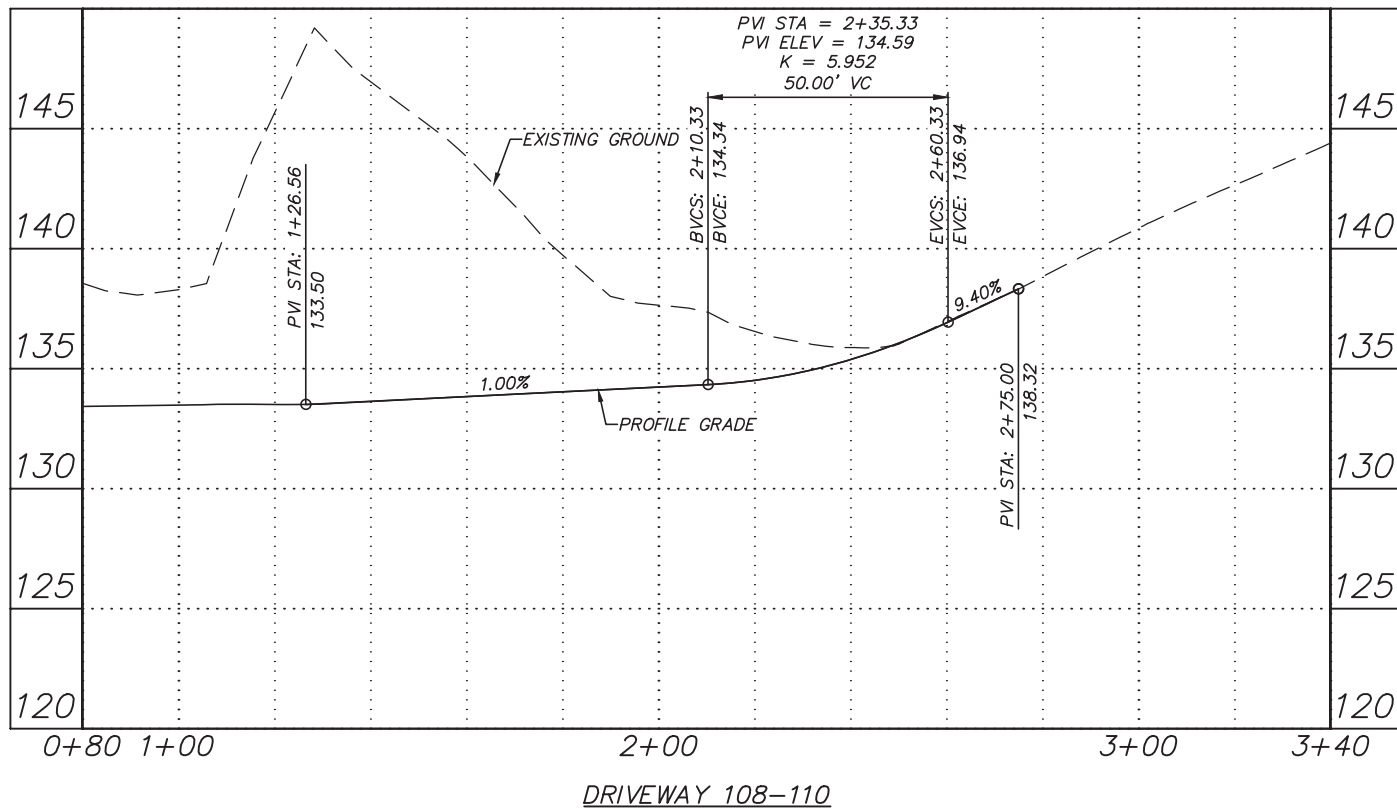
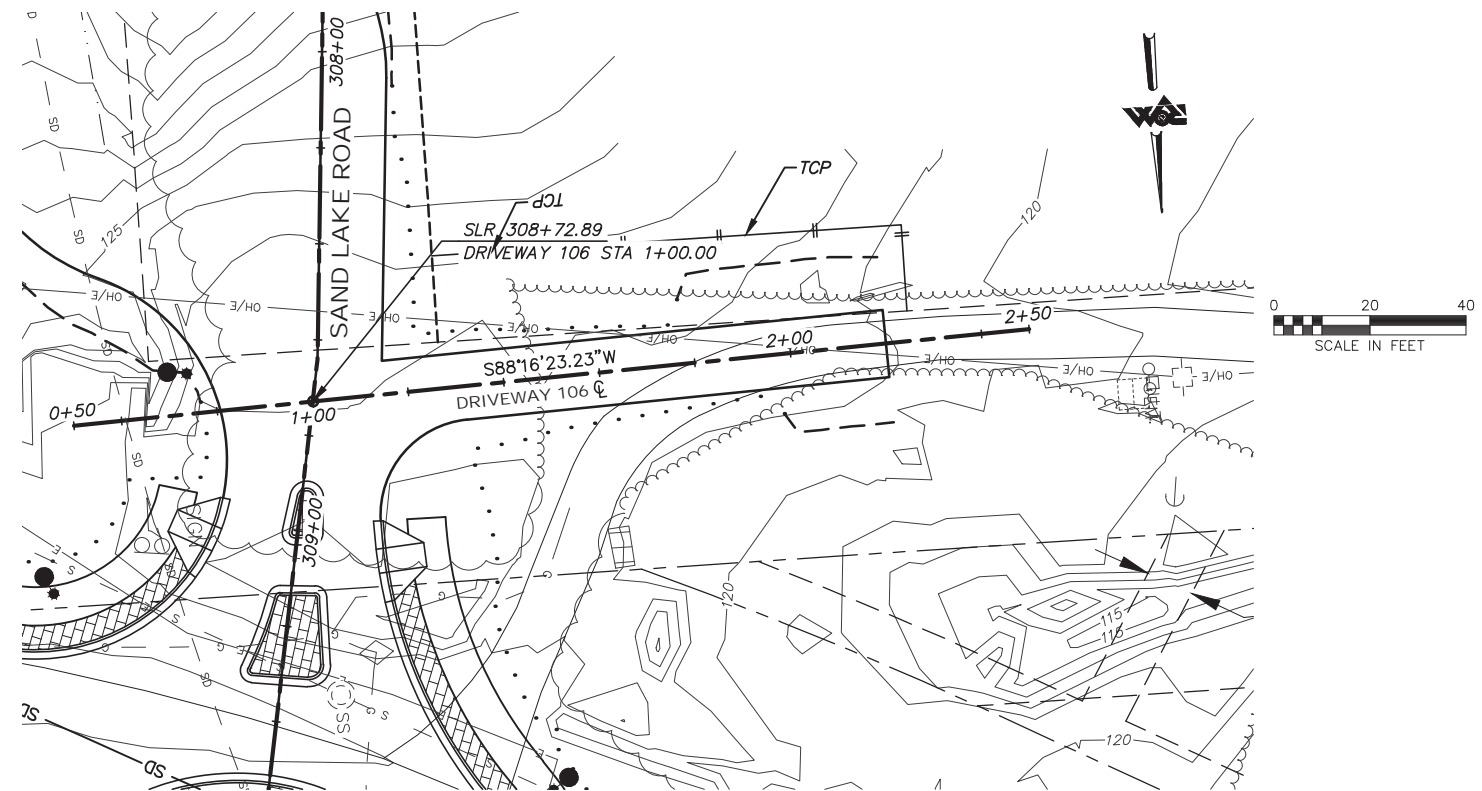
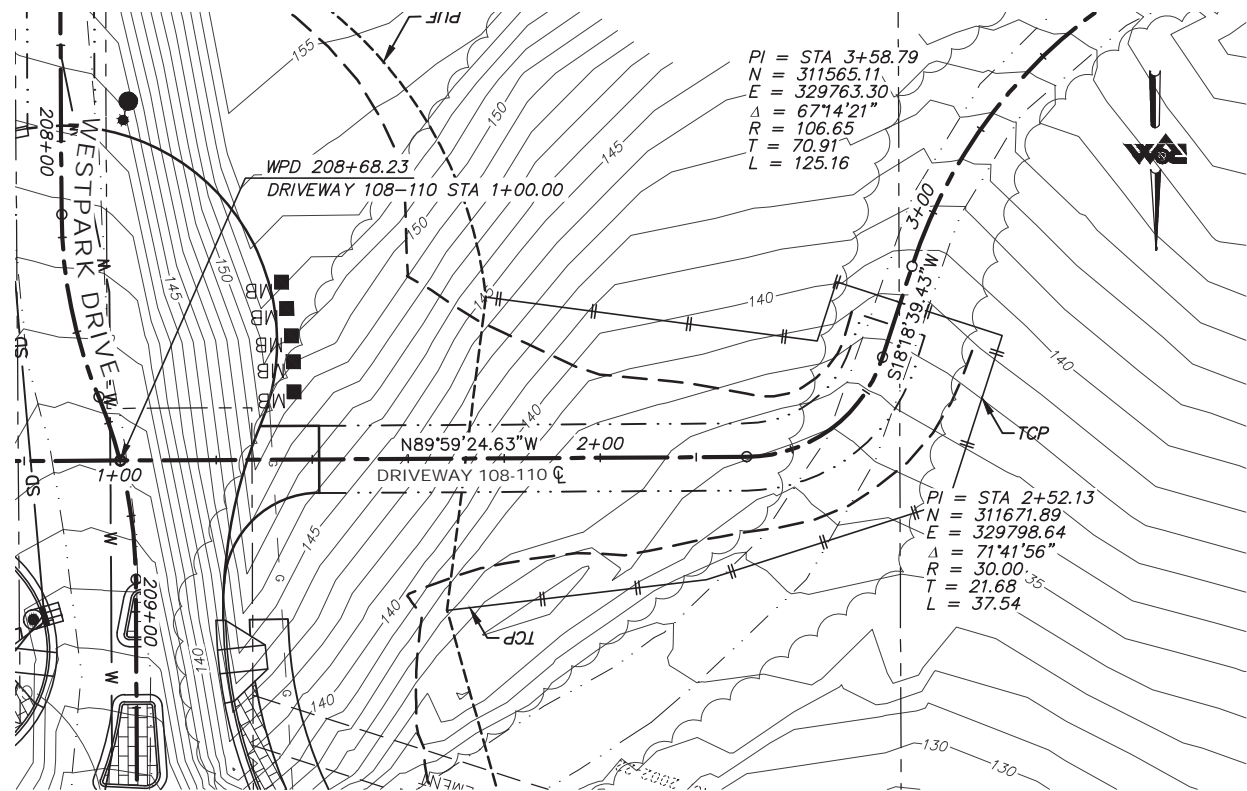
05-05 WEST DIMOND BOULEVARD UPGRADE
PHASE I: WESTPARK DRIVE TO SAND LAKE ROAD
PLAN AND PROFILE
SAND LAKE ROAD - STA 307+40 TO 311+50

SCALE 1:20 H DATE 4/11/14 GRID 2323 2324
1:4 V ACCT. NO. 2423 2424 SHEET 40 of 76

Plotted: 4/11/2014 7:36 AM File Location: Z:\project\1317.01 - West Dimond Blvd\Engineering\Acad\1317-E-P&Ps.dwg

File Location: Z:\project\1317.01- West Dimond Blvd\Engineering\Acad\1317-G-Driveways.dwg

Plotted: 4/11/2014 7:38 AM



65% DESIGN
APRIL 2014

FIELD BOOKS	BM NO.	LOCATION	ELEV.	DATA	DRAWN BY	CHECKED BY	DATA	DRAWN BY	CHECKED BY	REV	DATE	DESCRIPTION	BY	REV	DATE	DESCRIPTION	BY
DESIGN				BASE			TELEPHONE										
STAKING				TOPOGRAPHY			ELECTRIC										
ASBUILT				PROFILE			CABLE TV										
CONTRACTOR				SANITARY SEWER			DESIGN										
INSPECTOR				STORM SEWER			QUANTITIES										
CONSTRUCTION RECORD				WATER			MUN. FINAL CHK.										
				GAS													

R&M
R&M Consultants, Inc.
9101 Vanguard Drive
Anchorage, Alaska 99507
907 522 1707 voice
907 522 3404 fax
www.rmconsult.com

MUNICIPALITY OF ANCHORAGE

PROJECT MANAGEMENT AND ENGINEERING DIVISION

05-05 WEST DIMOND BOULEVARD UPGRADE
PHASE I: WESTPARK DRIVE TO SAND LAKE ROAD

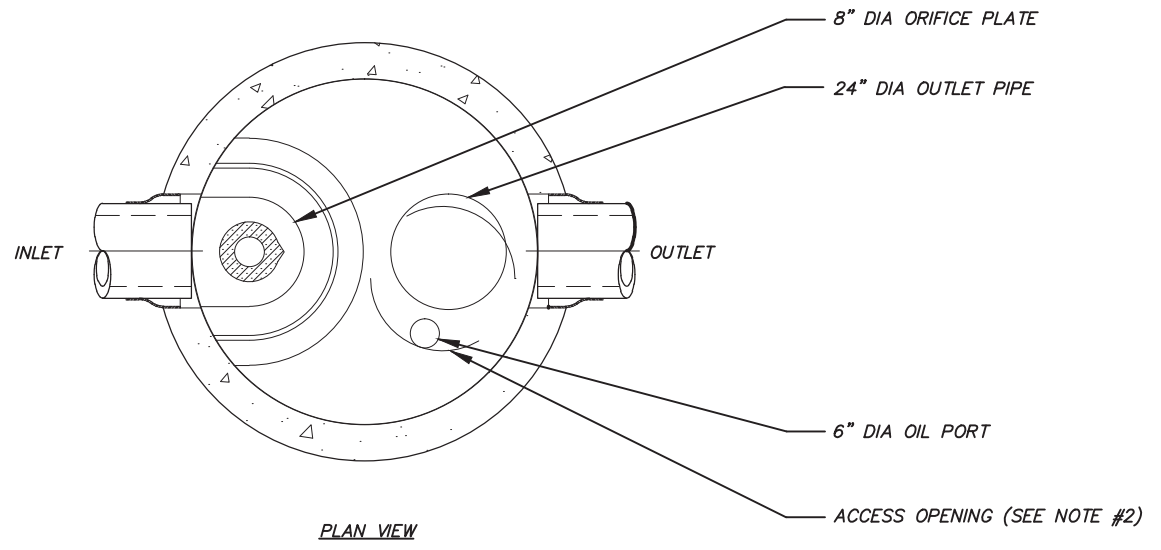
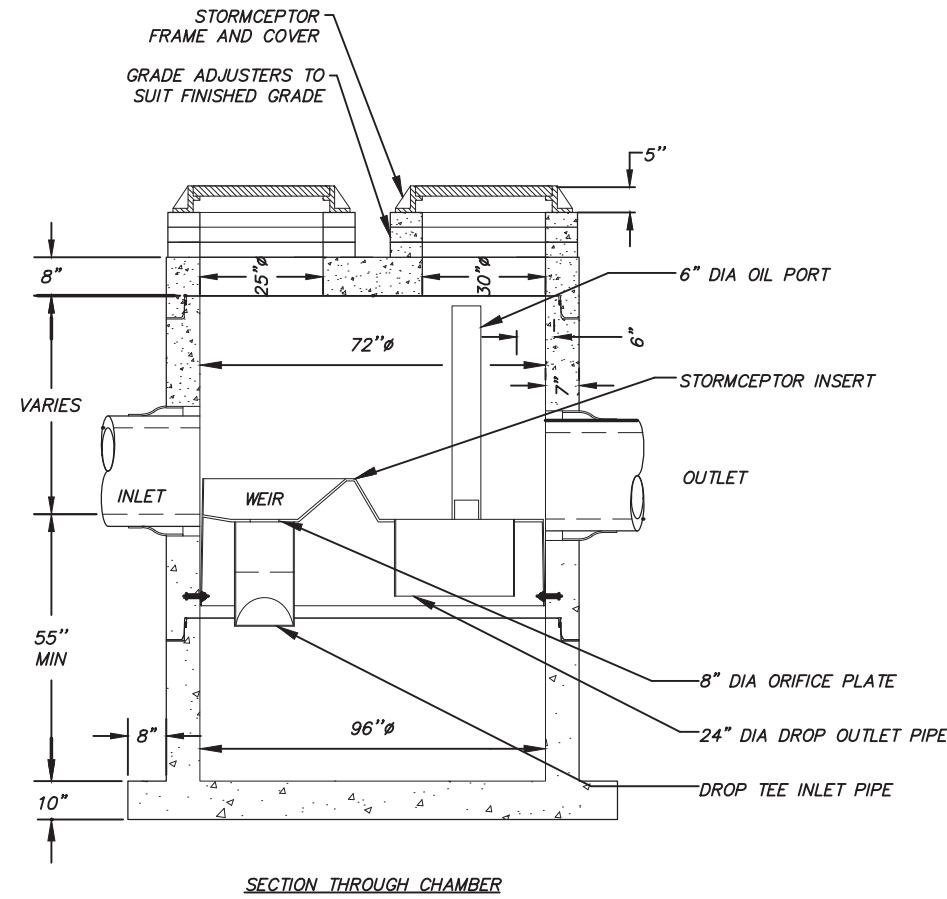
PLAN AND PROFILE DRIVEWAYS

SCALE 1:20 H
1:4 V

DATE 4/11/14
ACCT. NO.

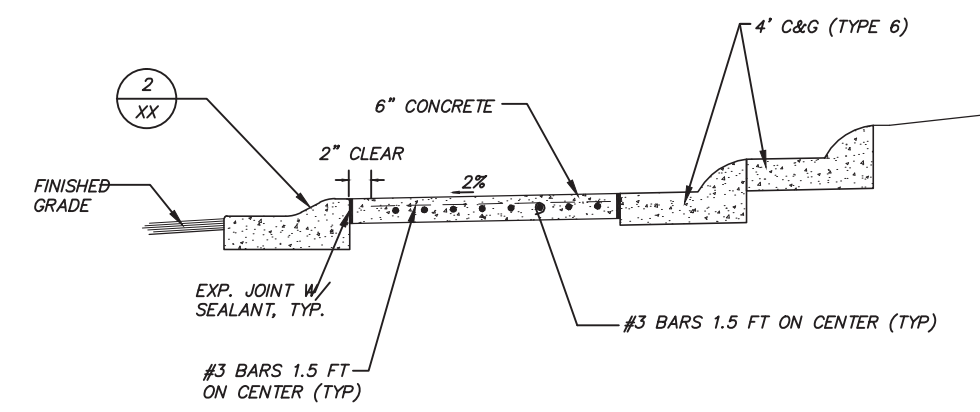
GRID 2323 2324
2423 2424

SHEET 50 of 76

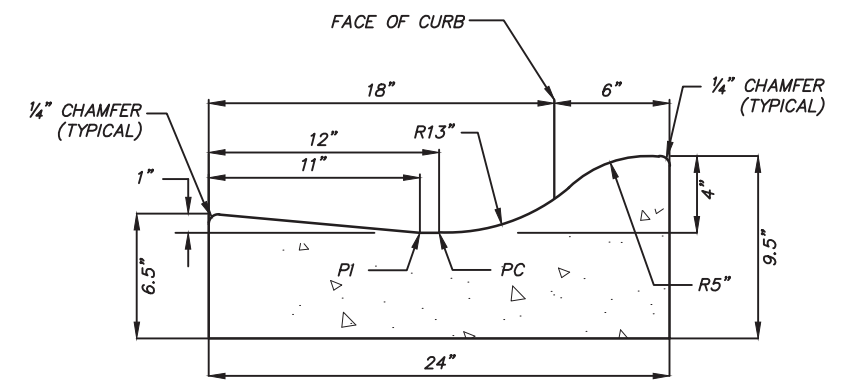


- NOTES:**
1. THE USE OF FLEXIBLE CONNECTION IS RECOMMENDED AT THE INLET AND OUTLET WHERE APPLICABLE.
 2. THE 30"Ø OPENING WILL BE POSITIONED OVER THE OUTLET DROP PIPE AND THE OIL PORT. THE 25"Ø OPENING WILL BE POSITIONED OVER THE INLET DROP TEE.
 3. THE STORMCEPTOR SYSTEM IS PROTECTED BY ONE OR MORE OF THE FOLLOWING U.S. PATENTS: #4985148, #5498331, #5725760, #5753115, #5849181, #6068765, #6371690.
 4. CONTACT A CONCRETE PIPE DIVISION REPRESENTATIVE FOR FURTHER DETAILS NOT LISTED ON THIS DRAWING.
 5. CONTRACTOR IS RESPONSIBLE TO MAKE ARRANGEMENTS WITH THE PRECASTER TO CAST THE "FILLET" PRIOR TO DELIVERY.
 6. DIMENSIONS MAY VARY WITH LOCAL MANUFACTURER, D&S CONCRETE INC., 2140 E. 84TH COURT, ANCHORAGE, AK 99507.

1 STORMCEPTOR STC 900
XX NTS



2 TRUCK APRON CROSS-SECTION
XX NTS



3 4" ROUNDABOUT TRUCK APRON CURB & GUTTER
XX NTS

65% DESIGN
APRIL 2014

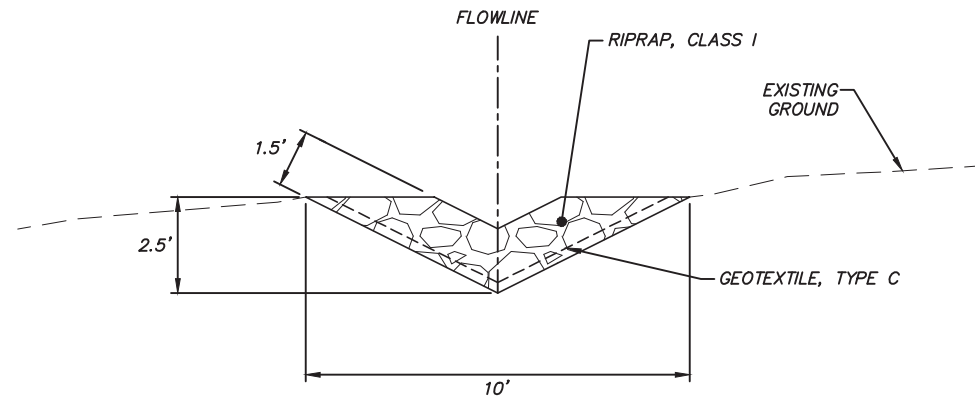
Plotted: 4/11/2014 7:38 AM File Location: z:\project\1317.01- West Dimond Blvd\Engineering\Acad\1317-H-Details.dwg

FIELD BOOKS	BM NO.	LOCATION	ELEV.	DATA	DRAWN BY	CHECKED BY	DATA	DRAWN BY	CHECKED BY	REV	DATE	DESCRIPTION	BY	REV	DATE	DESCRIPTION	BY
DESIGN				BASE			TELEPHONE										
STAKING				TOPOGRAPHY			ELECTRIC										
ASBUILT				PROFILE			CABLE TV										
CONTRACTOR				SANITARY SEWER			DESIGN										
INSPECTOR				STORM SEWER			QUANTITIES										
				WATER			MUN. FINAL CHK.										
				GAS													
CONSTRUCTION RECORD		VERTICAL DATUM		PLAN CHECK													

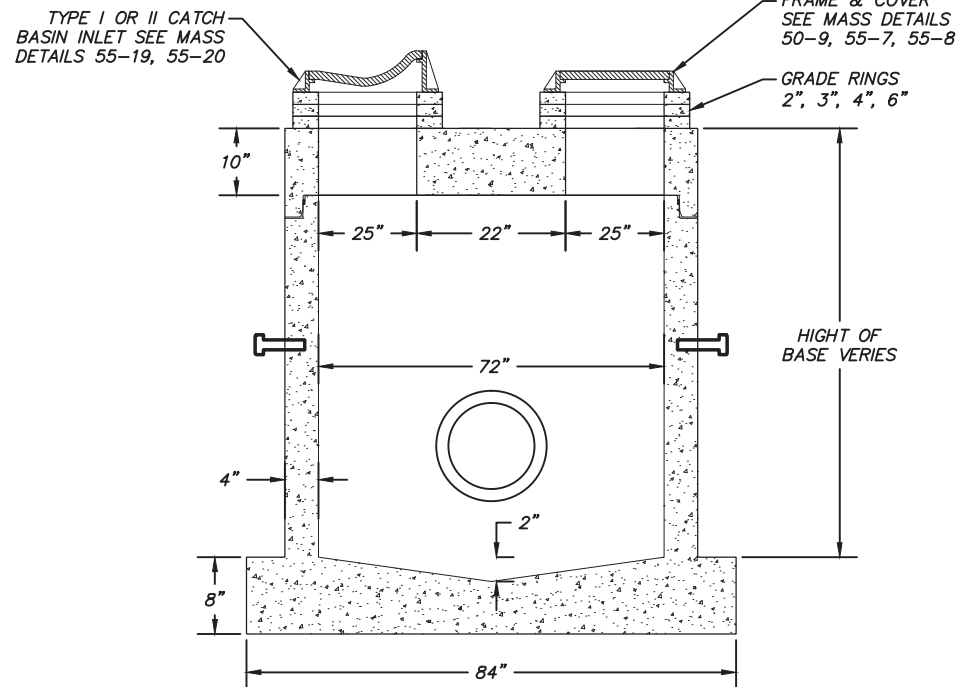
R&M Consultants, Inc.
9101 Vanguard Drive
Anchorage, Alaska 99507
907 522 1707 voice
907 522 3404 fax
www.rmconsult.com



PROJECT MANAGEMENT AND ENGINEERING DIVISION	
05-05 WEST DIMOND BOULEVARD UPGRADE PHASE I: WESTPARK DRIVE TO SAND LAKE ROAD	
DETAILS	
SCALE	DATE 4/11/14 GRID 2323 2324 ACCT. NO. 2423 2424
SHEET 53	of 76



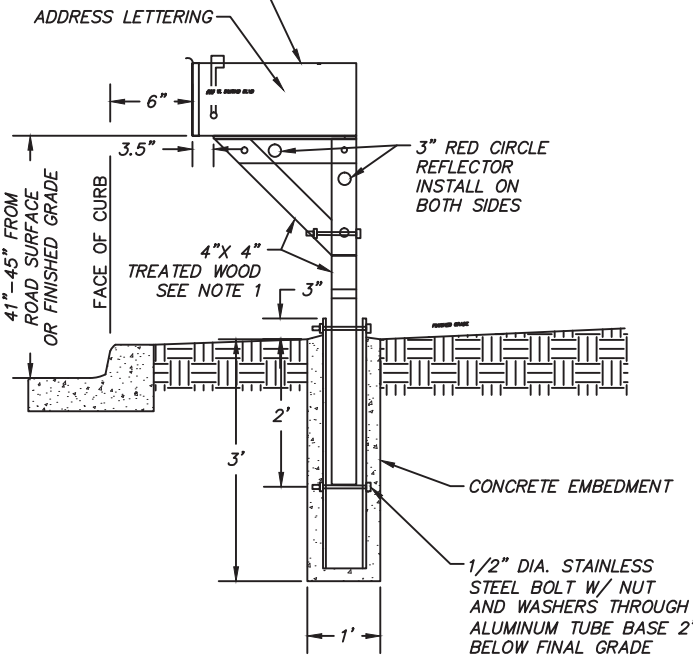
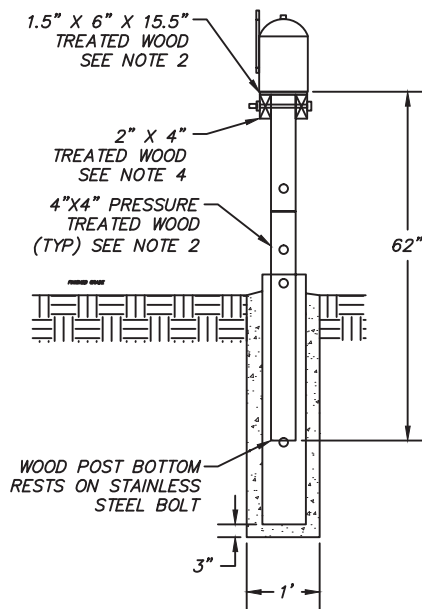
1 ROCK FLUME
NTS



2 TYPE II CATCH BASIN MANHOLE
NTS

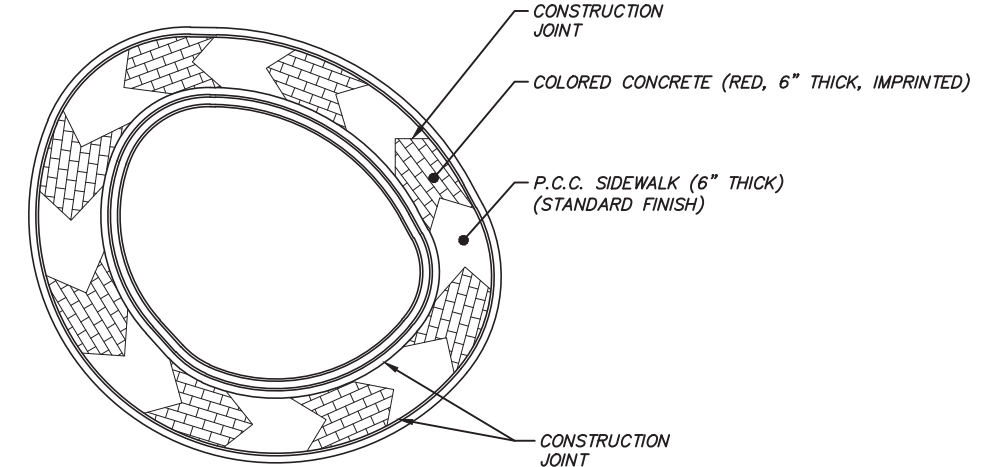
- NOTES:
1. JOINTS TO BE SEALED WITH BESTFIT BUTYRIGHT JOINT SEALANT OR EQUAL
 2. EZ LIFT PINS
 3. WALLS ARE REINFORCED WITH 4" X 8" W7/W2.9 W.W.F.
 4. BASE PAD IS REINFORCED WITH #4 REBAR AT 12" ON CENTER EACH WAY

STANDARD BLACK MAILBOX 6.5" WIDE X 7.5" TALL X 19" DEEP SEE NOTE 3



- NOTES:
1. CONTRACTOR SHALL FIELD VERIFY MAILBOX LOCATION AND PHYSICAL ADDRESS PRIOR TO ORDERING MATERIAL OR INSTALLATION.
 2. ALL WOOD SHALL BE ALL WEATHER WOOD SEALED WITH A SEMI-TRANSPARENT OIL BASED STAIN BROWN IN COLOR. SUBMIT COLOR SAMPLE FOR APPROVAL.
 3. CONTRACTOR SHALL COORDINATE WITH THE MOA AND ENGINEER IN THE FIELD REGARDING MAILBOX SUBSTITUTIONS OR MAILBOX SIZING, PRIOR TO ORDERING MATERIALS.
 4. THE LOCATION OF EXISTING FEATURES AND UTILITIES SHOWN ARE APPROXIMATE. IT SHALL BE THE CONTRACTOR'S RESPONSIBILITY TO FIELD VERIFY THE HORIZONTAL AND VERTICAL LOCATION OF ALL ENCOUNTERED UTILITIES AND TO RECORD ANY CHANGES ON THE RECORD DRAWINGS.
 5. CONTRACTOR SHALL INSTALL MAILBOX ADDRESS LABELS PER PLAN. ADDRESS LABELS SHALL BE A MINIMUM OF 1" IN HEIGHT AND INSTALLED ON THE WEST SIDE OF THE MAILBOX VISIBLE FROM ON COMING TRAFFIC. ADDRESS LABELS SHOULD BE CENTERED BOTH VERTICAL AND HORIZONTAL ON MAILBOX.
 6. CONTRACTOR SHALL POUR CONCRETE PATHWAY AROUND THE PROPOSED MAILBOX POST.
 7. CUT-OFF EXCESS BOLT AND FILE SMOOTH, AFTER TIGHTENING

3 MAILBOX INSTALLATION
NTS



4 ROUNDABOUT CHEVRON CONCRETE PATTERN LAYOUT
NTS

65% DESIGN
APRIL 2014

File Location: Z:\project\1317.01 - West Dimond Blvd\Engineering\Acad\1317-H-Details.dwg

Plotted: 4/11/2014 7:39 AM

FIELD BOOKS	BM NO.	LOCATION	ELEV.	DATA	DRAWN BY	CHECKED BY	DATA	DRAWN BY	CHECKED BY	REV	DATE	DESCRIPTION	BY	REV	DATE	DESCRIPTION	BY
DESIGN				BASE			TELEPHONE										
STAKING				TOPOGRAPHY			ELECTRIC										
ASBULT				PROFILE			CABLE TV										
CONTRACTOR				SANITARY SEWER			DESIGN										
INSPECTOR				STORM SEWER			QUANTITIES										
				WATER			MUN. FINAL CHK.										
				GAS													
CONSTRUCTION RECORD		VERTICAL DATUM		PLAN CHECK													

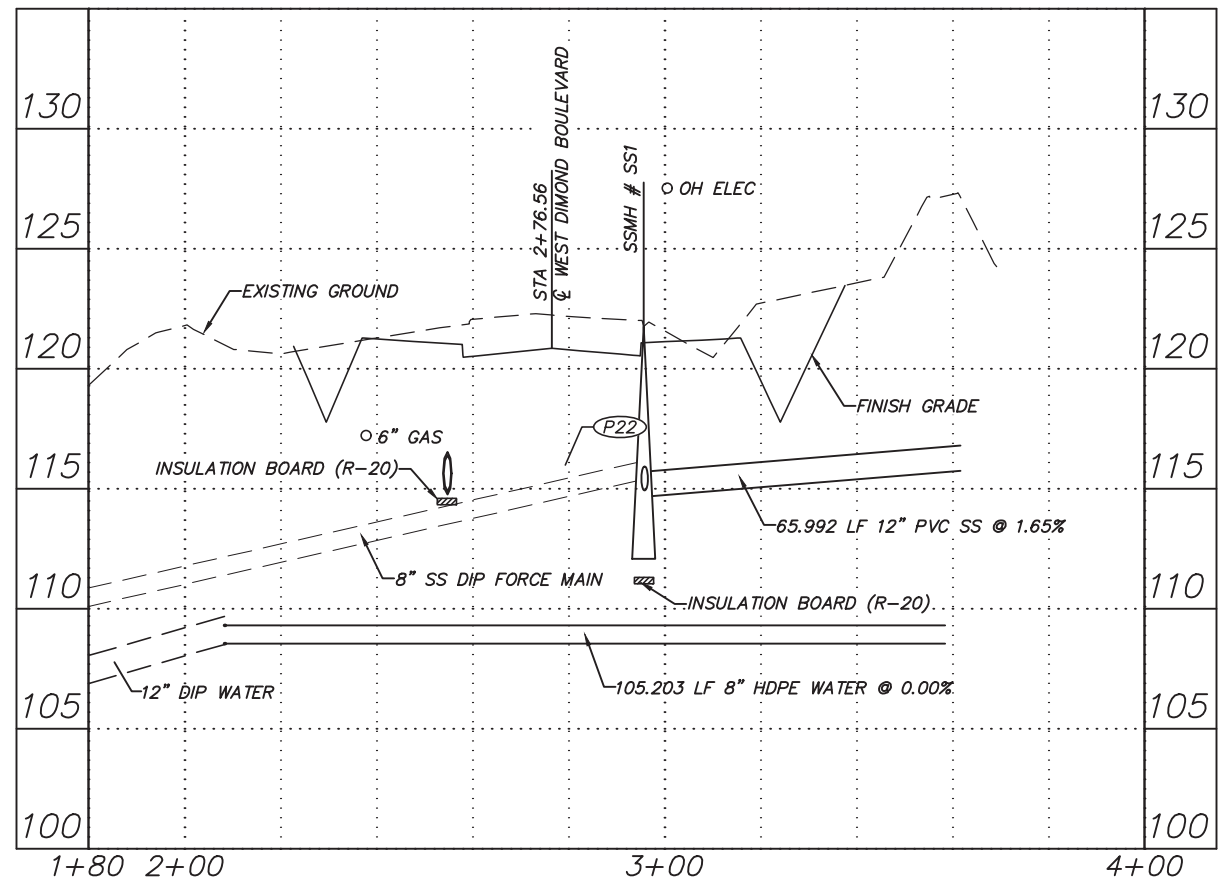
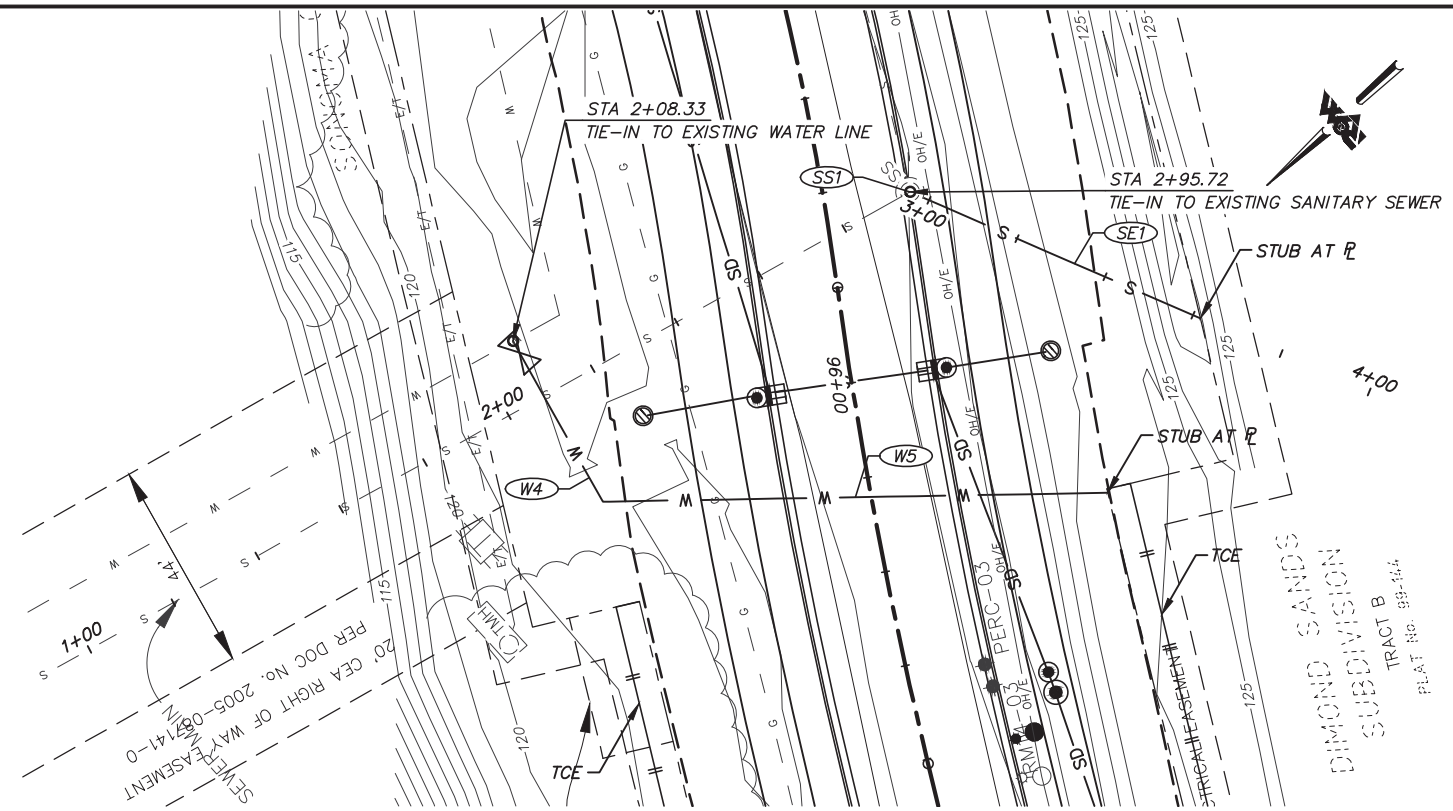


PROJECT MANAGEMENT AND ENGINEERING DIVISION

05-05 WEST DIMOND BOULEVARD UPGRADE
PHASE I: WESTPARK DRIVE TO SAND LAKE ROAD

DETAILS

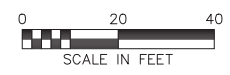
SCALE: _____ DATE: 4/11/14 GRID: _____ SHEET 54 of 76



DIMOND SANDS WATER & SEWER CONNECTION

SANITARY SEWER PIPE & STRUCTURE SCHEDULE					
NO.	SIZE	LENGTH	SLOPE (%)	FROM STRUCTURE	TO STRUCTURE
SS1					
SP1					
TO BE COMPLETED					

WATER PIPE SCHEDULE					
NO.	SIZE	LENGTH	SLOPE (%)	FROM STRUCTURE	TO STRUCTURE
W4					
W5					
TO BE COMPLETED					



65% DESIGN
APRIL 2014

FIELD BOOKS	BM NO.	LOCATION	ELEV.	DATA	DRAWN BY	CHECKED BY	DATA	DRAWN BY	CHECKED BY	REV	DATE	DESCRIPTION	BY	REV	DATE	DESCRIPTION	BY	
DESIGN				BASE			TELEPHONE											
STAKING				TOPOGRAPHY			ELECTRIC											
ASBULT				PROFILE			CABLE TV											
CONTRACTOR				SANITARY SEWER			DESIGN											
INSPECTOR				STORM SEWER			QUANTITIES											
				WATER			MUN. FINAL CHK.											
				GAS														
CONSTRUCTION RECORD		VERTICAL DATUM		PLAN CHECK			REVISIONS											

R&M Consultants, Inc.
9101 Vanguard Drive
Anchorage, Alaska 99507
907 522 1707 voice
907 522 3404 fax
www.rmconsult.com



PROJECT MANAGEMENT AND ENGINEERING DIVISION

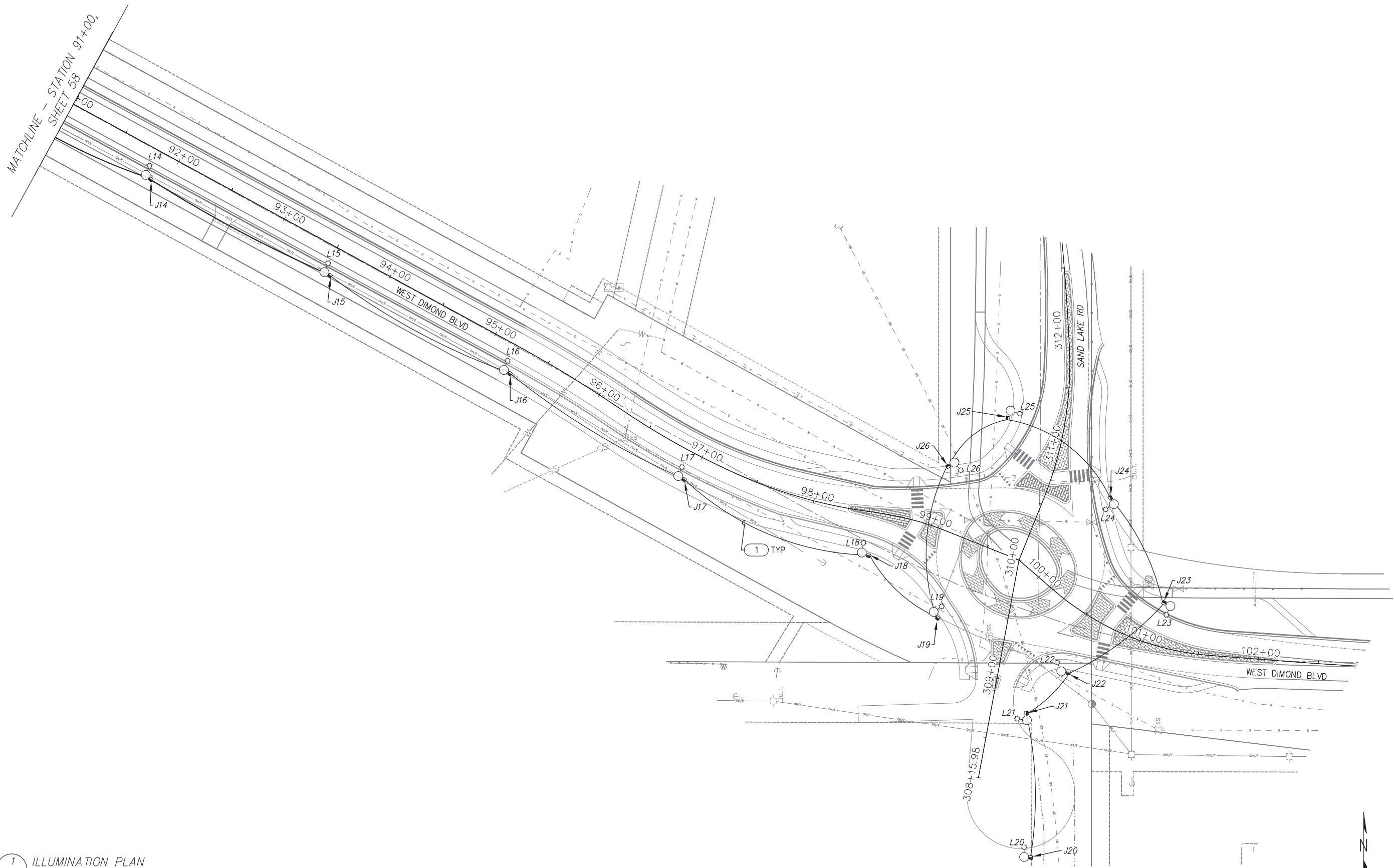
05-05 WEST DIMOND BOULEVARD UPGRADE
PHASE I: WESTPARK DRIVE TO SAND LAKE ROAD
GRADING TABLES
DIMOND SANDS WATER & SEWER DETAILS

SCALE 1:20 H
1:4 V

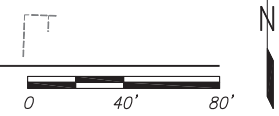
DATE 4/11/14
ACCT. NO.

GRID 2323 2324
2423 2424

SHEET 56 of 76



1 ILLUMINATION PLAN
59 SCALE: 1" = 40'-0"



65% DESIGN
APRIL 2014

FIELD BOOKS	BM NO.	LOCATION	ELEV.	DATA	DRAWN BY	CHECKED BY	DATA	DRAWN BY	CHECKED BY	REV	DATE	DESCRIPTION	BY	REV	DATE	DESCRIPTION	BY
DESIGN				BASE			TELEPHONE										
STAKING				TOPOGRAPHY			ELECTRIC										
ASBUILT				PROFILE			CABLE TV										
CONTRACTOR				SANITARY SEWER			DESIGN										
INSPECTOR				STORM SEWER			QUANTITIES										
CONSTRUCTION RECORD				WATER			MUN. FINAL CHK.										
				GAS													

EDC, Inc.
213 W. FIREWEED LANE
ANCHORAGE, AK 99503
(907) 276-7933

Professional Engineer Seal for Roy N. Pace, EE 12053, State of Alaska.

Municipality of Anchorage logo.

PROJECT MANAGEMENT AND ENGINEERING DIVISION
05-05 WEST DIMOND BOULEVARD UPGRADE
PHASE I: WESTPARK DRIVE TO SAND LAKE ROAD
ILLUMINATION PLAN

SCALE: _____ DATE: 4/3/14 GRID: 2303 2324 / 2423 2424 SHEET 59 of 76
ACCT. NO. _____

File Location: P:\Projects\RAM\West Dimond Lighting\Drawings\Elec\61 LOAD CENTER SCHEDULE.dwg

Plotted: 4/11/2014 9:15 AM

ELECTROLIER SCHEDULE											
POLE	STATIONING	OFFSET	WATTS	VOLTS	POLE HEIGHT	ARM LENGTH	LIGHTING DISTRIBUTION	BASE TYPE	CIRCUIT	SHEET NO.	NOTES
L1			134W	480V	27FT	12.0	M-C-3	FIXED	A-5,7	58	
L2			134W	480V	27FT	12.0	M-C-3	FIXED	A-5,7	58	
L3			134W	480V	27FT	12.0	M-C-3	FIXED	A-5,7	58	
L4			229W	480V	27FT	12.0	M-C-3	FIXED	A-6,8	58	
L5			229W	480V	27FT	12.0	M-C-3	FIXED	A-6,8	58	
L6			134W	480V	27FT	12.0	M-C-3	FIXED	A-6,8	58	
L7			229W	480V	27FT	12.0	M-C-3	FIXED	A-6,8	58	
L8			229W	480V	27FT	12.0	M-C-3	FIXED	A-6,8	58	
L9			229W	480V	27FT	12.0	M-C-3	FIXED	A-6,8	58	
L10			229W	480V	27FT	12.0	M-C-3	FIXED	A-6,8	58	
L11			229W	480V	27FT	12.0	M-C-3	FIXED	A-6,8	58	
L12			134W	480V	27FT	12.0	M-C-3	FIXED	A-2,4	58	
L13			134W	480V	27FT	12.0	M-C-3	FIXED	A-2,4	58	
L14			134W	480V	27FT	12.0	M-C-3	FIXED	A-2,4	59	
L15			134W	480V	27FT	12.0	M-C-3	FIXED	A-2,4	59	
L16			134W	480V	27FT	12.0	M-C-3	FIXED	A-2,4	59	
L17			134W	480V	27FT	12.0	M-C-3	FIXED	A-2,4	59	
L18			274W	480V	27FT	12.0	M-C-3	FIXED	A-2,4	59	
L19			274W	480V	27FT	12.0	M-C-3	FIXED	A-2,4	59	
L20			183W	480V	27FT	12.0	M-C-3	FIXED	A-2,4	59	
L21			274W	480V	27FT	12.0	M-C-3	FIXED	A-2,4	59	
L22			274W	480V	27FT	12.0	M-C-3	FIXED	A-2,4	59	
L23			274W	480V	30FT	-	M-C-3	FIXED	A-2,4	59	45° POLE
L24			274W	480V	27FT	12.0	M-C-3	FIXED	A-2,4	59	
L25			274W	480V	27FT	12.0	M-C-3	FIXED	A-2,4	59	
L26			274W	480V	27FT	12.0	M-C-3	FIXED	A-2,4	59	

STATIONING IS APPROXIMATE, POSITION SHOULD BE VERIFIED BY FIELD ENGINEER.
 MAST ARM SHALL BE PERPENDICULAR TO ROADWAY CENTERLINE UNLESS OTHERWISE NOTED.

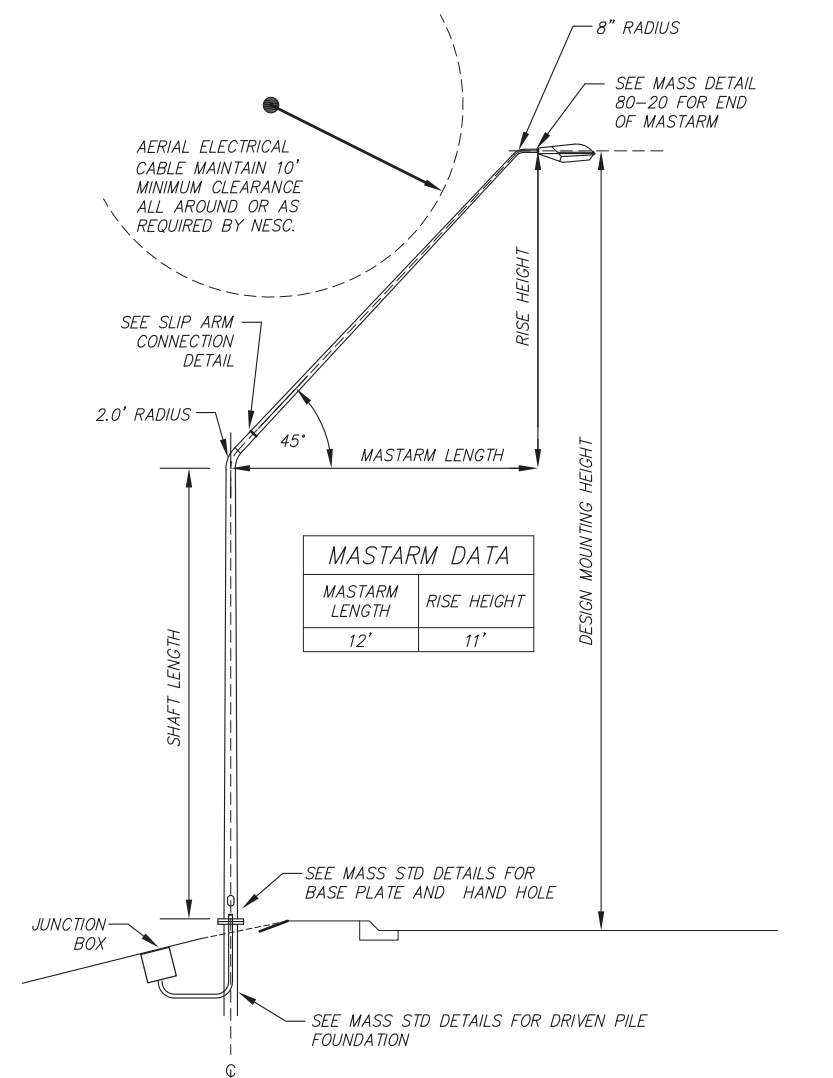
JUNCTION BOX SCHEDULE			
J-BOX#	STATIONING	OFFSET	TYPE
J0			2
J1			1A
J2			1A
J3			1A
J4			1A
J5			1A
J6			1A
J7			1A
J8			1A
J9			1A
J10			1A
J11			1A
J12			1A
J13			1A
J14			1A
J15			1A
J16			1A
J17			1A
J18			1A
J19			1A
J20			1A
J21			1A
J22			1A
J23			1A

STATIONING IS APPROXIMATE, POSITION SHOULD BE VERIFIED BY FIELD ENGINEER

LUMINAIRE SCHEDULE	
MANUFACTURER	BETALED OR APPROVED EQUAL
MODEL	LEDWAY, GENERATION E
LIGHT SOURCE	LED
WATTAGE	134W
LED COUNT	60
COLOR TEMP	4,000K
MINIMUM CRI	70
INITIAL OUTPUT	10,666 LUM
DRIVE CURRENT	700MA
VOLTAGE	480V
PHOTOCELL	NO
LENS TYPE	CUT OFF
IES DISTRIBUTION	M-C-3
UL LISTED	YES
SHIELDED	YES
WARRANTY	10 YEARS

LUMINAIRE SCHEDULE	
MANUFACTURER	BETALED OR APPROVED EQUAL
MODEL	LEDWAY, GENERATION E
LIGHT SOURCE	LED
WATTAGE	229W
LED COUNT	100
COLOR TEMP	4,000K
MINIMUM CRI	70
INITIAL OUTPUT	17,769 LUM
DRIVE CURRENT	700MA
VOLTAGE	480V
PHOTOCELL	NO
LENS TYPE	CUT OFF
IES DISTRIBUTION	M-C-3
UL LISTED	YES
SHIELDED	NO
WARRANTY	10 YEARS

LUMINAIRE SCHEDULE	
MANUFACTURER	BETALED OR APPROVED EQUAL
MODEL	LEDWAY, GENERATION E
LIGHT SOURCE	LED
WATTAGE	274W
LED COUNT	120
COLOR TEMP	4,000K
MINIMUM CRI	70
INITIAL OUTPUT	21,190 LUM
DRIVE CURRENT	700MA
VOLTAGE	480V
PHOTOCELL	NO
LENS TYPE	CUT OFF
IES DISTRIBUTION	M-C-3
UL LISTED	YES
SHIELDED	NO
WARRANTY	10 YEARS



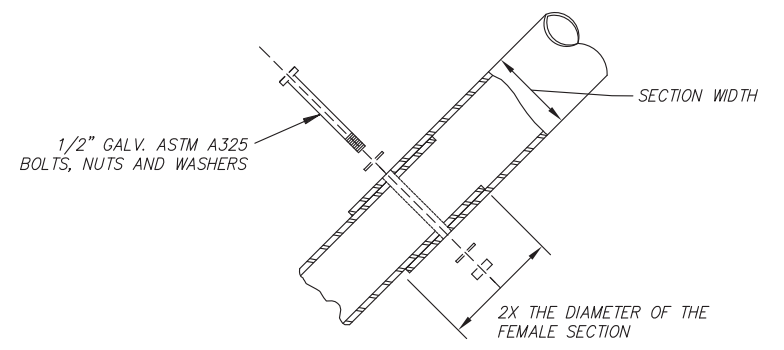
1 45° ELECTROLIER ELEVATION
 SCALE: NTS

LOAD CENTER SCHEDULE					
LC#	STATIONING	OFFSET	TYPE	VOLTAGE	SHEET NO.
A			1A	480/240V	58

STATIONING IS APPROXIMATE, POSITION SHOULD BE VERIFIED BY FIELD ENGINEER

INTERSECTION ILLUMINANCE - WEST DIMOND BLVD				
CROSS STREET	AVERAGE ILLUMINANCE	UNIFORMITY (AVE/MIN)	IESNA INTERSECTION TYPE	PEDESTRIAN CONFLICT
SAND LAKE	2.61	2.80:1	MAJOR/MAJOR	MEDIUM
WESTPARK	2.25	2.41:1	MAJOR/COLLECTOR	MEDIUM

LUMINAIRE PERFORMANCE CRITERIA	
POLE TYPE	MAST ARM
LAMP	LED
LED COUNT	60
LIGHT LOSS FACTOR	0.80
AIMING ANGLE	0
NUMBER OF LANES	2
ROAD WIDTH	22 FT
MEDIAN WIDTH	0 FT
MOUNTING HEIGHT	30 FT
ARM LENGTH	12 FT
SETBACK	12 FT
SPACING	170 FT
AVERAGE LUMINANCE	0.53 CD/M ²
UNIFORMITY (AVE/MIN)	1.77:1
UNIFORMITY (MAX/MIN)	3.67:1
VEILING LUMINANCE	0.27



2 SLIP CONNECTION DETAIL
 SCALE: NTS

65% DESIGN
 APRIL 2014

FIELD BOOKS	BM NO.	LOCATION	ELEV.	DATA	DRAWN BY	CHECKED BY	DATA	DRAWN BY	CHECKED BY	REV	DATE	DESCRIPTION	BY	REV	DATE	DESCRIPTION	BY	
DESIGN				BASE			TELEPHONE											
STAKING				TOPOGRAPHY			ELECTRIC											
ASBUILT				PROFILE			CABLE TV											
CONTRACTOR				SANITARY SEWER			DESIGN											
INSPECTOR				STORM SEWER			QUANTITIES											
CONSTRUCTION RECORD				WATER			MUN. FINAL CHK.											
				GAS														

EDC, Inc.
 213 W. FIREWEED LANE
 ANCHORAGE, AK 99503
 (907) 276-7933

STATE OF ALASKA
 49TH
 Roy N. Pace
 EE 12053
 REGISTERED PROFESSIONAL ENGINEER

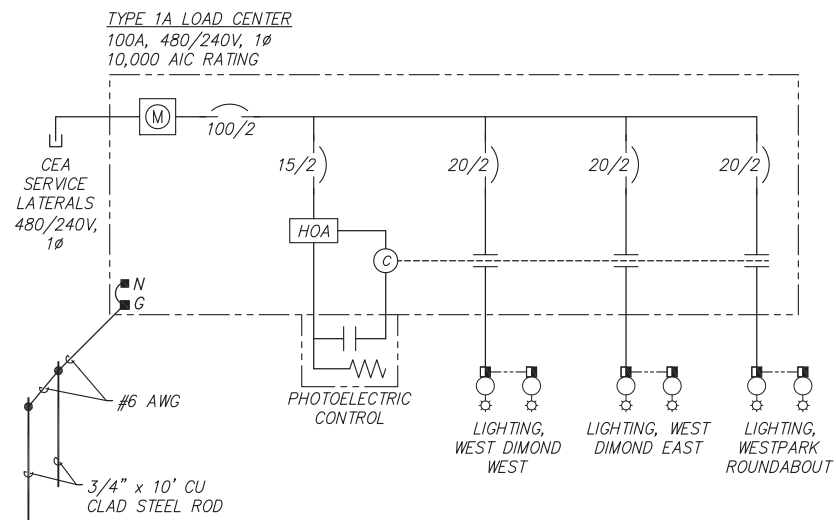
MUNICIPALITY OF ANCHORAGE

PROJECT MANAGEMENT AND ENGINEERING DIVISION
 05-05 WEST DIMOND BOULEVARD UPGRADE
 PHASE I: WESTPARK DRIVE TO SAND LAKE ROAD
 LIGHTING SCHEDULES
 SCALE ACCT. NO. DATE 4/11/14 GRID 2323 2324 2423 2424 SHEET 60 of 76

SUMMARY OF LOAD CENTER LC-A																
LOAD CENTER TYPE:	1A															
SERVING UTILITY:	CEA															
SERVICE CONDUIT TYPE:	RIGID METAL CONDUIT															
LOCATION DATA																
LOAD CENTER:	SEE SHEET 60 FOR STATIONING															
POWER SOURCE:	NEW LINE EXTENSION															
PHOTOELECTRIC CONTROL:	AT LOAD CENTER															
SERVICE VOLTAGE	1 PHASE, 3 WIRE, 480/240 VOLTS AC WITH GROUNDED NEUTRAL															
PROVIDE METER SOCKET?	YES															
MAIN BREAKER A:	480 VOLT, 2 POLE, 100 AMPERES															
CONTACTOR:	600V, 12-POLE															
PANEL A																
POLE	AMP TRIP	DESCRIPTION	POLE KVA	A Ø	B Ø	POLE KVA	DESCRIPTION	AMP TRIP	POLE							
1	15/2	PHOTOCELL	0.1	1.3	1.2	1.2	LIGHTING, WEST DIMOND EAST*	20/2	2							
3			0.0		1.2	1.2			4							
5	20/2	LIGHTING, WEST DIMOND WEST*	0.2	0.8	0.6	0.6	LIGHTING, WESTPARK ROUNDABOUT*	20/2	6							
7			0.2		0.8	0.6			8							
9			0.0	0.0		0.0			10							
11			0.0		0.0	0.0			12							
13			0.0	0.0		0.0			14							
* CIRCUIT THROUGH CONTACTOR			2.1	2.0					TOTAL KVA	4.1						
							AMPS					8.5				

VOLTAGE DROP CALCULATION - LC-A					
480V AC IN A 1-PH, 3 WIRE CONFIGURATION WITH A POWER-FACTOR OF 0.8, 1 COPPER CONDUCTOR PER PHASE IN A RMC. TEMPERATURE RATING 75°C.					
CKT #	SEGMENT SIZE (AWG)	SEGMENT LENGTH (FT)	LOAD (KVA)	TOTAL (AMPS)	SEG. (%VD)
5,7	#8	800	2.30	4.79	2.65
2,4	#8	560	2.40	5.00	2.72
6,8	#8	560	0.58	1.21	0.19

SHORT CIRCUIT CALCULATION - LC-A	
480V AC IN A 1-PH, 3 WIRE CONFIGURATION, 1 COPPER CONDUCTOR PER PHASE IN A RMC. TEMPERATURE RATING 75°C.	
ANTICIPATED TRANSFORMER RATING	50KVA
VOLTAGE	480/240V
TRANSFORMER IMPEDANCE	1.2%
LET-THRU SHORT CIRCUIT CURRENT	8,681A
LENGTH TO FAULT	40FT
SERVICE CONDUCTOR SIZE	1/0 AL
CONDUIT	NON-MAGNETIC
"C" CONSTANT	5,838
LINE-LINE FAULT	6,957A
LINE-NEUTRAL FAULT	7,468A



1 LOAD CENTER "A" POWER ONE-LINE
61 SCALE: NTS

65% DESIGN
APRIL 2014

FIELD BOOKS	BM NO.	LOCATION	ELEV.	DATA	DRAWN BY	CHECKED BY	DATA	DRAWN BY	CHECKED BY	REV	DATE	DESCRIPTION	BY	REV	DATE	DESCRIPTION	BY	
DESIGN				BASE			TELEPHONE											
STAKING				TOPOGRAPHY			ELECTRIC											
				PROFILE			CABLE TV											
ASBUILT				SANITARY SEWER			DESIGN											
CONTRACTOR	BASIS OF THIS DATUM			STORM SEWER			QUANTITIES											
INSPECTOR				WATER			MUN. FINAL CHK.											
CONSTRUCTION RECORD		VERTICAL DATUM		GAS														
										REVISIONS								

EDC, Inc.
213 W. FIREWEED LANE
ANCHORAGE, AK 99503
(907) 276-7933

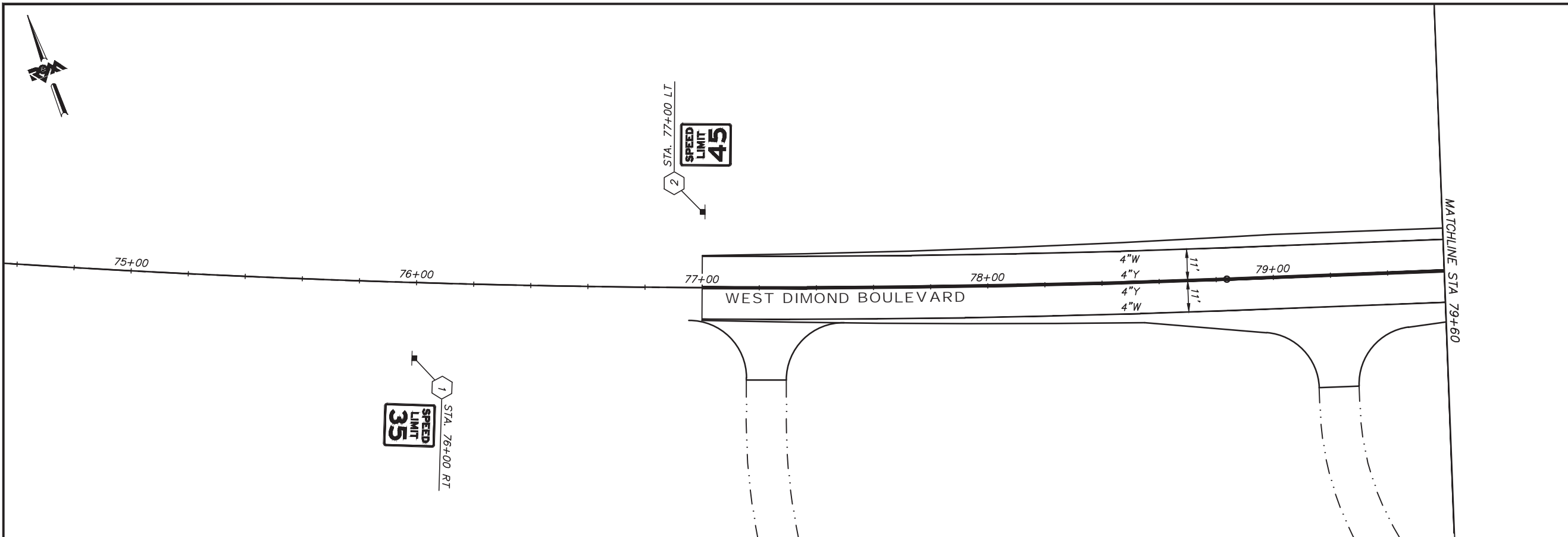

STATE OF ALASKA
49th
Roy N. Pace
EE 12053
REGISTERED PROFESSIONAL ENGINEER

MUNICIPALITY OF ANCHORAGE

PROJECT MANAGEMENT AND ENGINEERING DIVISION
05-05 WEST DIMOND BOULEVARD UPGRADE
PHASE I: WESTPARK DRIVE TO SAND LAKE ROAD
LOAD CENTER SCHEDULE
SCALE DATE 4/3/14 GRID 2303 2324 2423 2424 SHEET 61 of 76

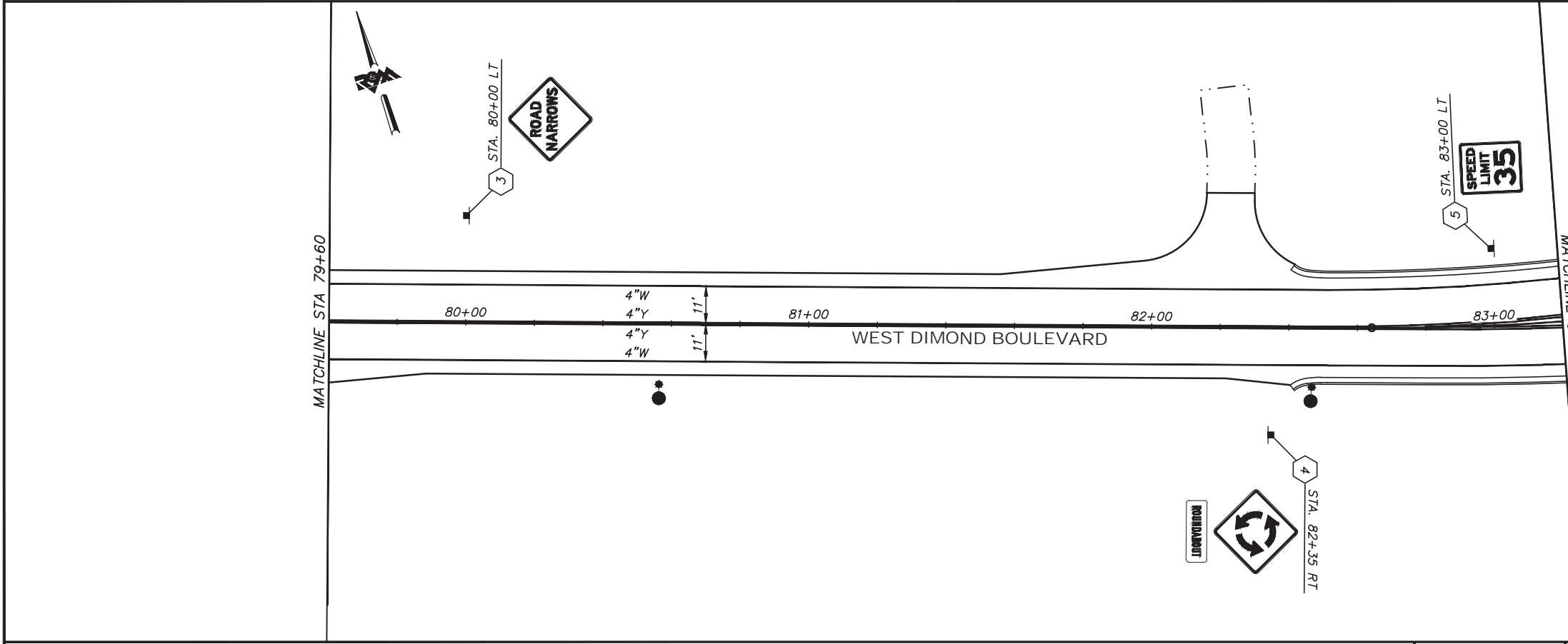
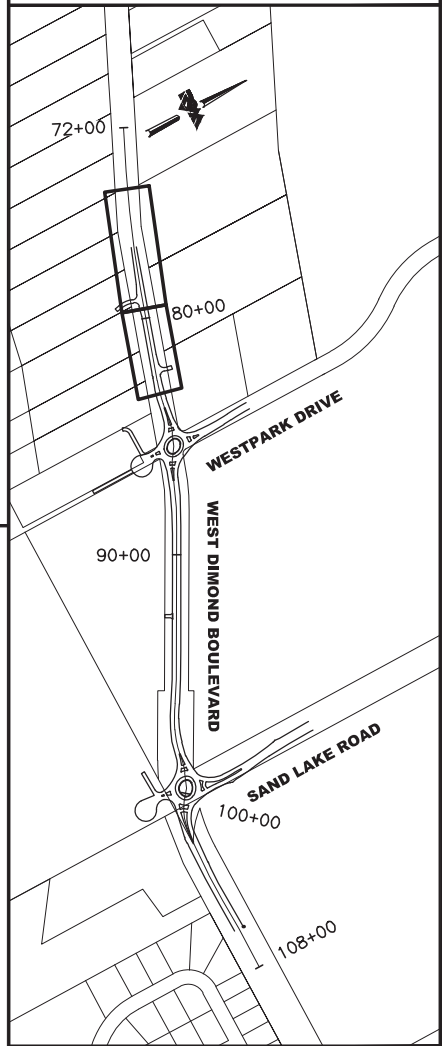
File Location: Z:\project\1317.01- West Dimond Blvd\Engineering\Acad\1317-L-Signing & Striping.dwg

Plotted: 4/11/2014 7:39 AM

**BEFORE YOU DIG
CALL FOR FREE
UNDERGROUND
LOCATION**

LOCATE CALL CENTER OF ALASKA
STATEWIDE 800-478-3121 WILL
NOTIFY SUBSCRIBED UTILITIES ONLY.
OTHER UTILITIES NEED TO BE
CONTACTED INDIVIDUALLY.



SIGNING & STRIPING NOTES:

1. FLEXIBLE DELINEATORS ARE NOT SHOWN ON THE PLANS FOR CLARITY. INSTALL AT ALL LANE REDUCTION TAPERS, BEGIN/END OF CURB, AND PLACED ACCORDING TO STANDARD DRAWING X. FINAL LOCATIONS ARE TO BE APPROVED BY THE ENGINEER PRIOR TO INSTALLATION.

**65% DESIGN
APRIL 2014**

SCALE IN FEET

FIELD BOOKS	BM NO.	LOCATION	ELEV.	DATA	DRAWN BY	CHECKED BY	DATA	DRAWN BY	CHECKED BY	REV	DATE	DESCRIPTION	BY	REV	DATE	DESCRIPTION	BY
DESIGN				BASE			TELEPHONE										
STAKING				TOPOGRAPHY			ELECTRIC										
ASBUILT				PROFILE			CABLE TV										
CONTRACTOR				SANITARY SEWER			DESIGN										
INSPECTOR				STORM SEWER			QUANTITIES										
				WATER			MUN. FINAL CHK.										
				GAS													
CONSTRUCTION RECORD		VERTICAL DATUM		PLAN CHECK													



R&M Consultants, Inc.
9101 Vanguard Drive
Anchorage, Alaska 99507
907 522 1707 voice
907 522 3404 fax
www.rmconsult.com

SEAL



PROJECT MANAGEMENT AND
ENGINEERING DIVISION

05-05 WEST DIMOND BOULEVARD UPGRADE
PHASE I: WESTPARK DRIVE TO SAND LAKE ROAD
SIGNING & STRIPING PLAN
BOP TO STA 83+20

SCALE 1:20 H
1:4 V DATE ACCT. NO. GRID 2323 2324
2423 2424 SHEET 62 of 76

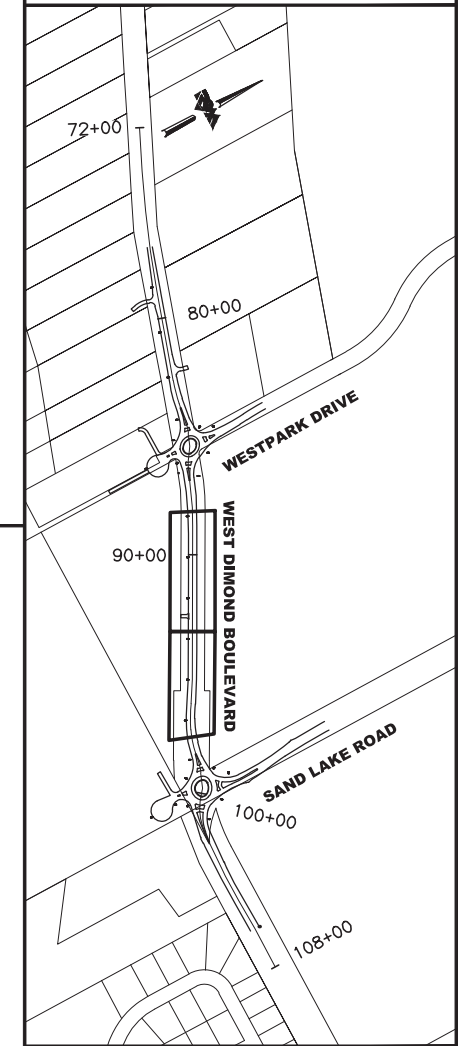
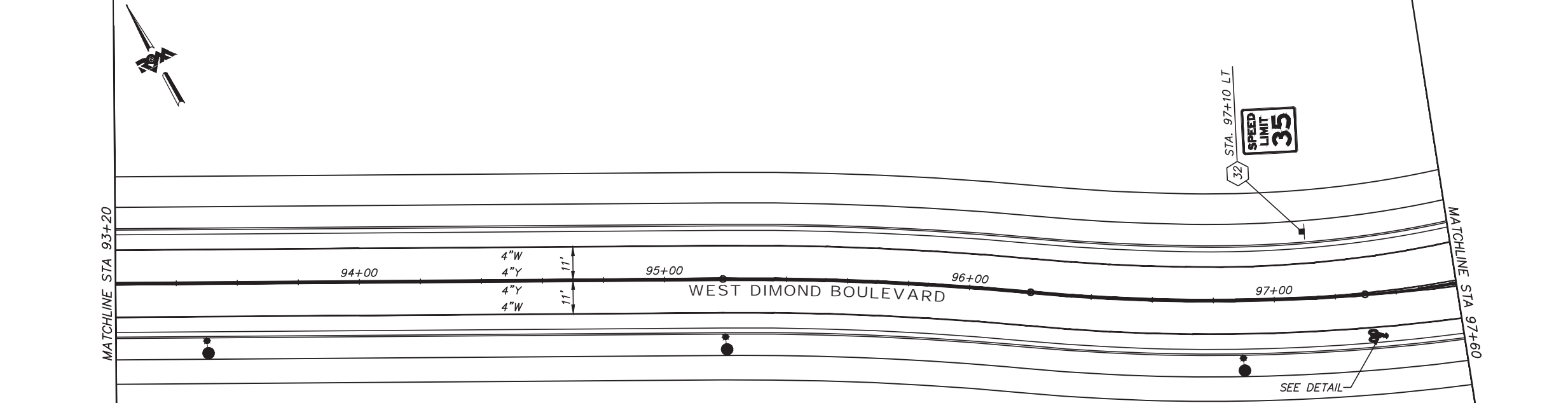
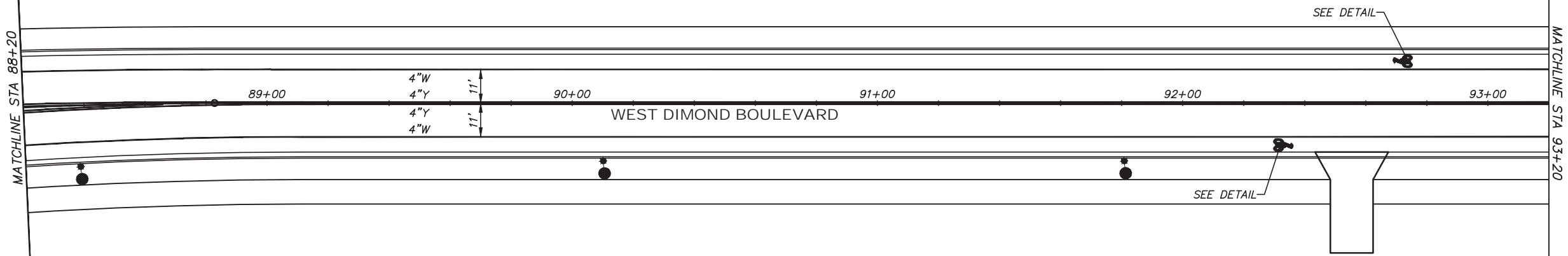
File Location: Z:\project\1317.01 - West Dimond Blvd\Engineering\Acad\1317-L-Signing & Striping.dwg

Plotted: 4/11/2014 7:40 AM



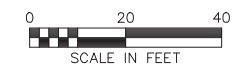
**BEFORE YOU DIG
CALL FOR FREE
UNDERGROUND
LOCATION**

LOCATE CALL CENTER OF ALASKA
STATEWIDE 800-478-3121 WILL
NOTIFY SUBSCRIBED UTILITIES ONLY.
OTHER UTILITIES NEED TO BE
CONTACTED INDIVIDUALLY.



KEYMAP

**65% DESIGN
APRIL 2014**



FIELD BOOKS	BM NO.	LOCATION	ELEV.	DATA	DRAWN BY	CHECKED BY	DATA	DRAWN BY	CHECKED BY	REV	DATE	DESCRIPTION	BY	REV	DATE	DESCRIPTION	BY	
DESIGN				BASE			TELEPHONE											
STAKING				TOPOGRAPHY			ELECTRIC											
ASBUILT				PROFILE			CABLE TV											
CONTRACTOR				SANITARY SEWER			DESIGN											
INSPECTOR				STORM SEWER			QUANTITIES											
CONSTRUCTION RECORD				WATER			MUN. FINAL CHK.											
				GAS														

R&M Consultants, Inc.
9101 Vanguard Drive
Anchorage, Alaska 99507
907 522 1707 voice
907 522 3404 fax
www.rmconsult.com

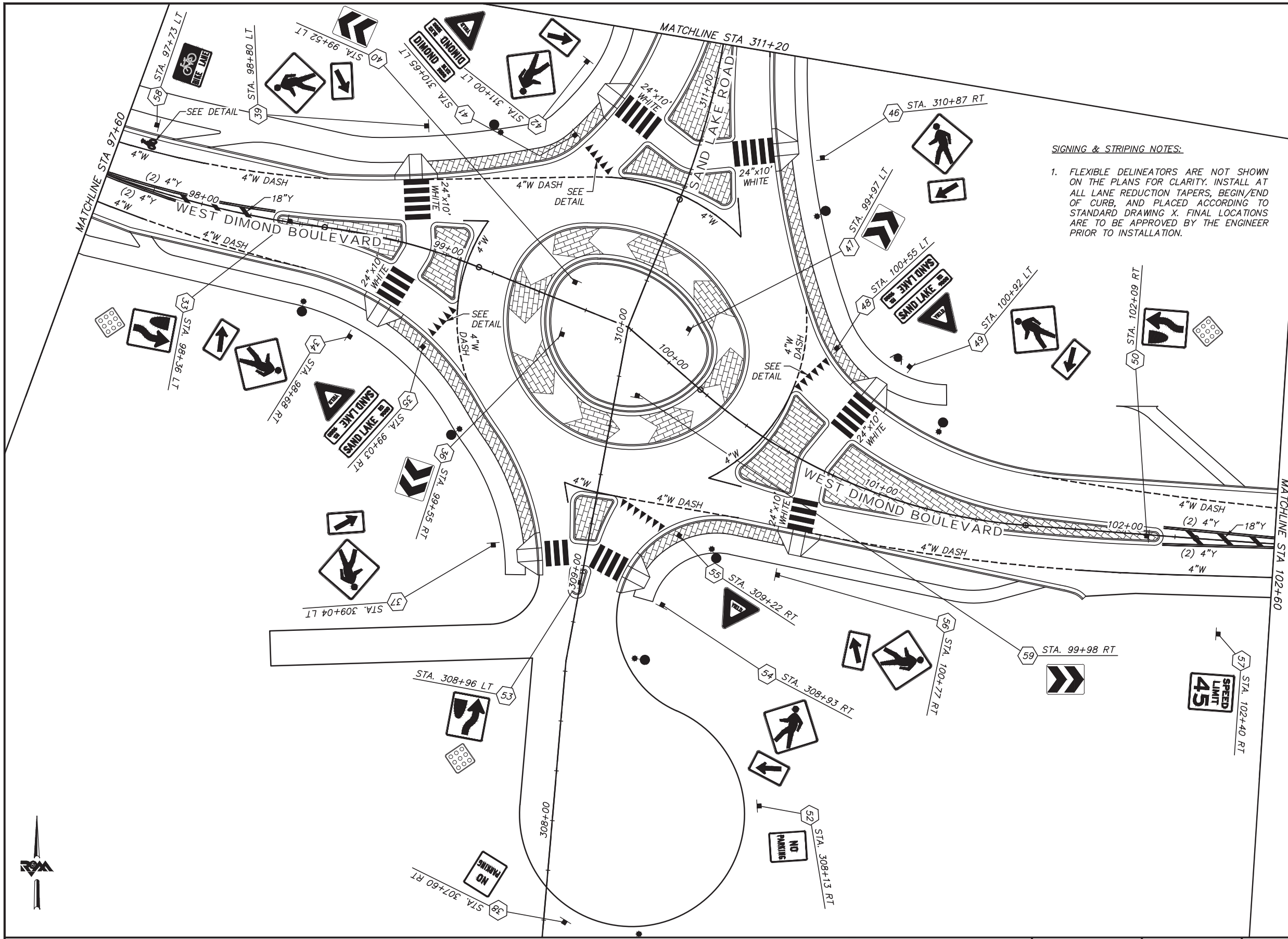


PROJECT MANAGEMENT AND
ENGINEERING DIVISION

05-05 WEST DIMOND BOULEVARD UPGRADE
PHASE I: WESTPARK DRIVE TO SAND LAKE ROAD
SIGNING & STRIPING PLAN
STA 88+20 TO STA 97+60

SCALE 1:20 H
1:4 V DATE ACCT. NO. GRID 2323 2324
2423 2424 SHEET 64 of 76

Plotted: 4/11/2014 7:40 AM File Location: Z:\project\1317.01 - West Dimond Blvd\Engineering\Acad\1317-L-Signing & Striping.dwg

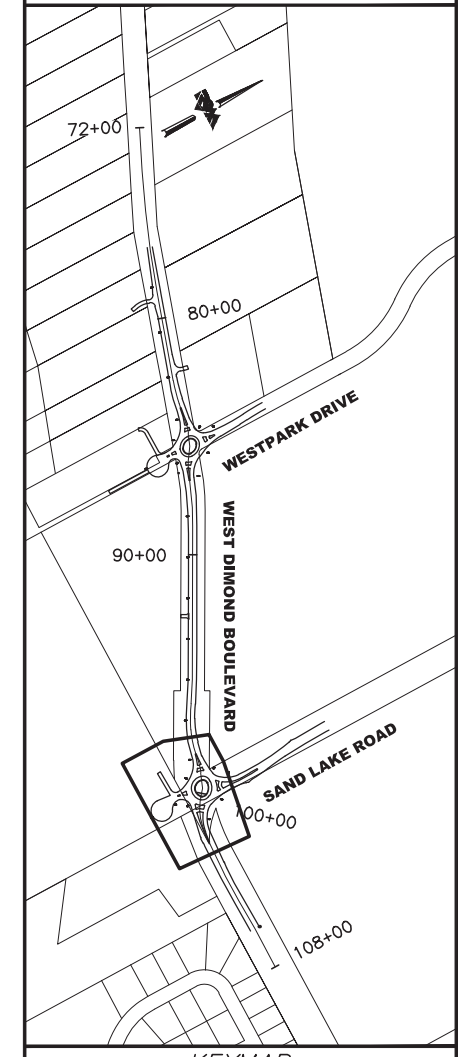


SIGNING & STRIPING NOTES:

1. FLEXIBLE DELINEATORS ARE NOT SHOWN ON THE PLANS FOR CLARITY. INSTALL AT ALL LANE REDUCTION TAPERS, BEGIN/END OF CURB, AND PLACED ACCORDING TO STANDARD DRAWING X. FINAL LOCATIONS ARE TO BE APPROVED BY THE ENGINEER PRIOR TO INSTALLATION.

BEFORE YOU DIG CALL FOR FREE UNDERGROUND LOCATION

LOCATE CALL CENTER OF ALASKA STATEWIDE 800-478-3121 WILL NOTIFY SUBSCRIBED UTILITIES ONLY. OTHER UTILITIES NEED TO BE CONTACTED INDIVIDUALLY.



65% DESIGN
APRIL 2014



FIELD BOOKS	BM NO.	LOCATION	ELEV.	DATA	DRAWN BY	CHECKED BY	DATA	DRAWN BY	CHECKED BY	REV	DATE	DESCRIPTION	BY	REV	DATE	DESCRIPTION	BY
DESIGN				BASE			TELEPHONE										
STAKING				TOPOGRAPHY			ELECTRIC										
ASBUILT				PROFILE			CABLE TV										
CONTRACTOR				SANITARY SEWER			DESIGN										
INSPECTOR				STORM SEWER			QUANTITIES										
CONSTRUCTION RECORD				WATER			MUN. FINAL CHK.										
				GAS													

R&M Consultants, Inc.
9101 Vanguard Drive
Anchorage, Alaska 99507
907 522 1707 voice
907 522 3404 fax
www.rmconsult.com

MUNICIPALITY OF ANCHORAGE

PROJECT MANAGEMENT AND ENGINEERING DIVISION

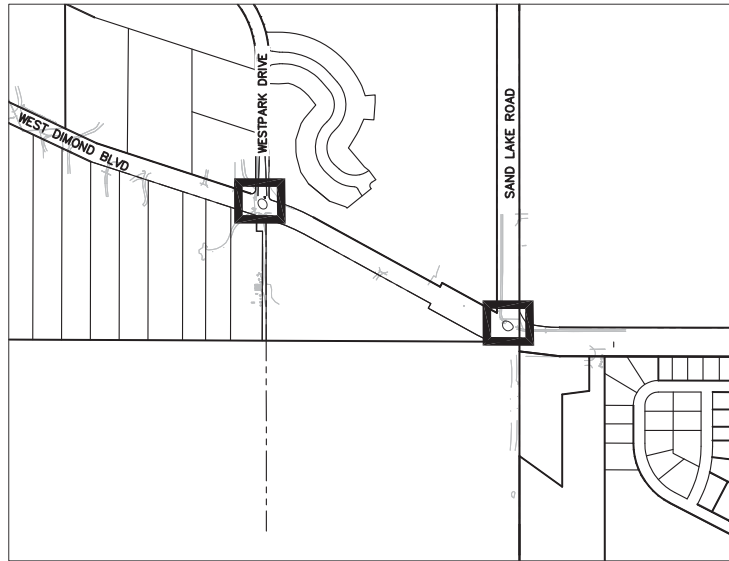
05-05 WEST DIMOND BOULEVARD UPGRADE
PHASE I: WESTPARK DRIVE TO SAND LAKE ROAD

SIGNING & STRIPING PLAN
SAND LAKE ROUNDABOUT

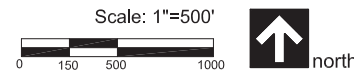
SCALE 1:20
DATE ACCT. NO. GRID 2323 2324
2423 2424 SHEET 65 of 76

File Location: H:\Projects\West Dimond Blvd\65% Design\West Dimond Blvd\1-1 West Dimond Blvd-65.14.dwg

Plotted: 4/10/2014 9:11 AM



Key Location Map



Plant Schedule

Common Name	Botanical Name	Quantity		Spacing (min.)	Size	Notes
		Roundabouts	Wall opt.			
Trees						
Birch	<i>Betula papyrifera</i>	20	2	8' o.c.	3"-4" cal.	See note 2
Crabapple	<i>Malus baccata</i>	0	1	as shown	3" cal.	
Spruce	<i>Picea glauca</i>	16	0	8' o.c.	6' tall	Nursery grown
Shrubs						
Dogwood, Red Twig	<i>Cornus sericea</i>	82	0	4' o.c.	36" tall	
Lilac	<i>Syringa vulgaris</i>	0	5	4' o.c.	36" tall	
Spiraea, Goldflame	<i>Spiraea bumalda 'Goldflame'</i>	240	41	2' o.c.	24" tall	
Perennials						
Mixed species (Iris, Bergenia, Salvia, Lilly, & Yarrow)		0	540	12" o.c.	1 gal.	

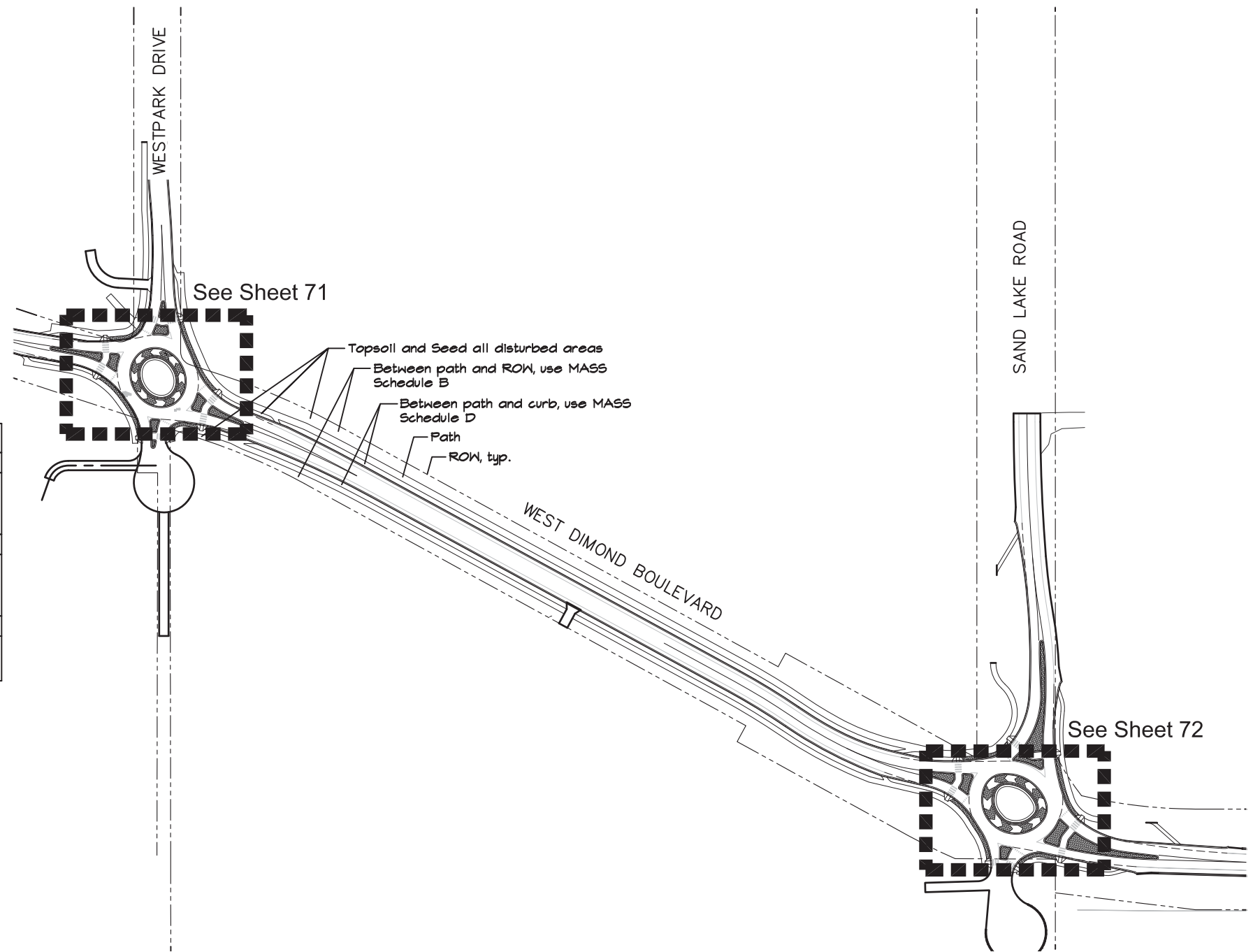
Notes

- All plants shall meet American Standard for Nursery Stock (ANSI) Z60.1-2004 (American Nursery & Landscape Association (ANLA) 1200 G St., NW, Suite 800 Washington, DC 20005 www.anla.org)
- Birch to be 50% single stem and 50% Birch, Clump. Birch, Clump to include birch with min. 3 trunks with 3 to 4 inch callipers each. All Birch shall be full with a canopy no less than one half the overall height.
- Mulch continuously throughout all planting beds with 3" shredded bark mulch. Keep mulch 6" away from stems and trunks. Transition mulch to edging and adjacent surfaces. See mulch limit detail.
- Topsoil and seed all disturbed areas, see civil for work limits. DO NOT SEED PLANTING BEDS. Topsoil depth shall be 4". On 2:1 and steeper slopes use BFM & MASS Schedule B (between path and ROW) and MASS Schedule D (between path and curb).
- See planting details for additional information.
- Height to spread ratio of evergreen trees equal 5 (height):3 (spread). Evergreens to be fully branched to ground.

Boulder Schedule

Symbol	Type	Size	Quantity
	Large	4'x5'x5'	1
	Medium	3'x3'x4'	4
	Small	2'x3'x3'	4

Note:
See Detail 2, Sheet 75. Location and orientation to be under direction of the Landscape Architect. Boulders to be gray to dark gray angular rock with natural fractures. Drill holes shall not be visible.



West Dimond Boulevard Landscape Key

65% DESIGN
APRIL 2014

FIELD BOOKS	BM NO.	LOCATION	ELEV.	DATA	DRAWN BY	CHECKED BY	DATA	DRAWN BY	CHECKED BY	REV	DATE	DESCRIPTION	BY	REV	DATE	DESCRIPTION	BY	
DESIGN				BASE			TELEPHONE											
STAKING				TOPOGRAPHY			ELECTRIC											
ASBUILT				PROFILE			CABLE TV											
CONTRACTOR				SANITARY SEWER			DESIGN											
INSPECTOR				STORM SEWER			QUANTITIES											
CONSTRUCTION RECORD				WATER			MUN. FINAL CHK.											
				GAS														
				PLAN CHECK														
				REVISIONS														

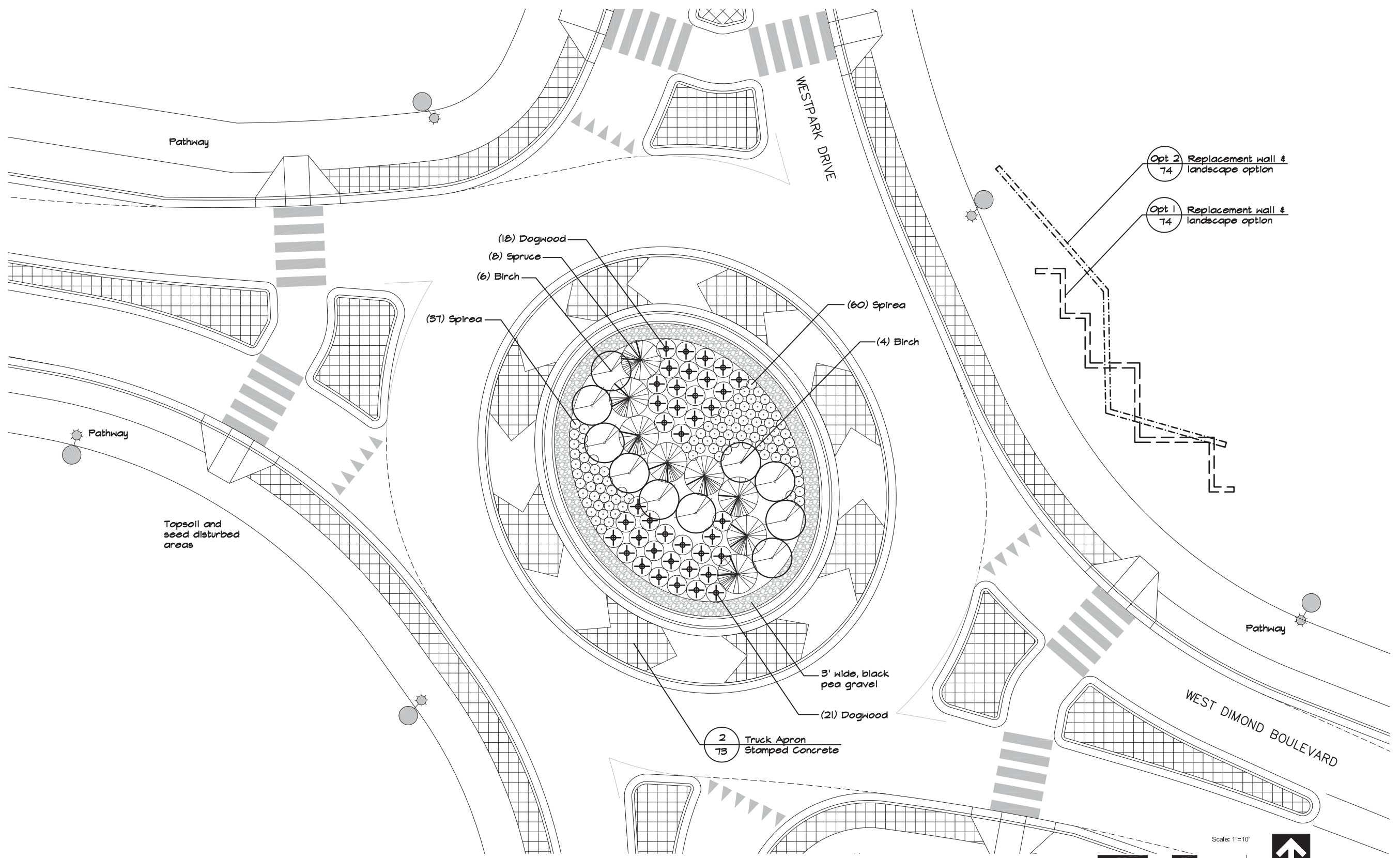
earthscape



PROJECT MANAGEMENT AND ENGINEERING DIVISION	
05-05	WEST DIMOND BOULEVARD UPGRADE PHASE I: WESTPARK DRIVE TO SAND LAKE ROAD
LANDSCAPE PLAN	
SCALE	DATE 4/10/14 GRID 2323 2324 ACCT. NO. 2423 2424
SHEET 70 of 76	

File Location: H:\Projects\West Dimond Blvd\65%--West Dimond Blvd\L-1 West Dimond Blvd-65.14.dwg

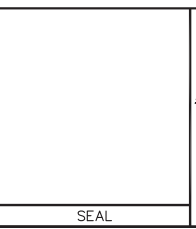
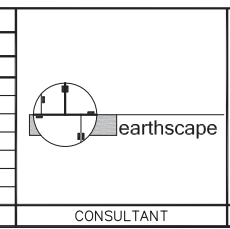
Plotted: 4/10/2014 9:20 AM



Landscape Plan

65% DESIGN
APRIL 2014

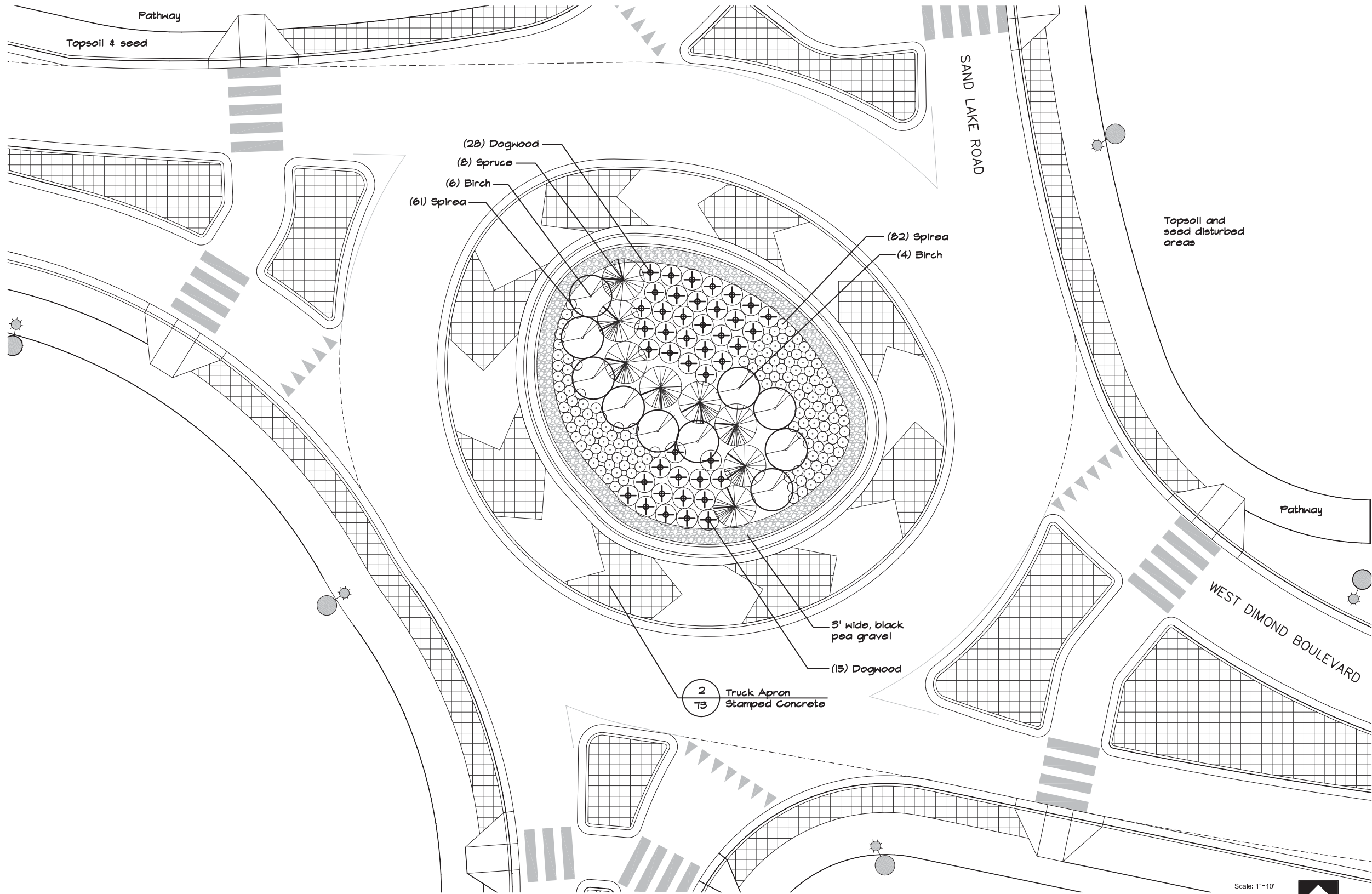
FIELD BOOKS	BM NO.	LOCATION	ELEV.	DATA	DRAWN BY	CHECKED BY	DATA	DRAWN BY	CHECKED BY	REV	DATE	DESCRIPTION	BY	REV	DATE	DESCRIPTION	BY
				BASE			TELEPHONE										
				TOPOGRAPHY			ELECTRIC										
				PROFILE			CABLE TV										
				SANITARY SEWER			DESIGN										
				STORM SEWER			QUANTITIES										
				WATER			MUN. FINAL CHK.										
				GAS													
CONSTRUCTION RECORD		VERTICAL DATUM		PLAN CHECK			REVISIONS										



PROJECT MANAGEMENT AND ENGINEERING DIVISION	
05-05 WEST DIMOND BOULEVARD UPGRADE PHASE I: WESTPARK DRIVE TO SAND LAKE ROAD	
LANDSCAPE PLAN	
SCALE	DATE 4/10/14 GRID 2323 2324 ACCT. NO. 2423 2424
SHEET 71 of 76	

File Location: H:\Projects\West Dimond Blvd\65%--West Dimond Blvd\L-1 West Dimond Blvd-65.14.dwg

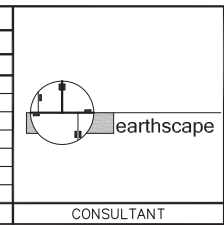
Plotted: 4/10/2014 9:21 AM



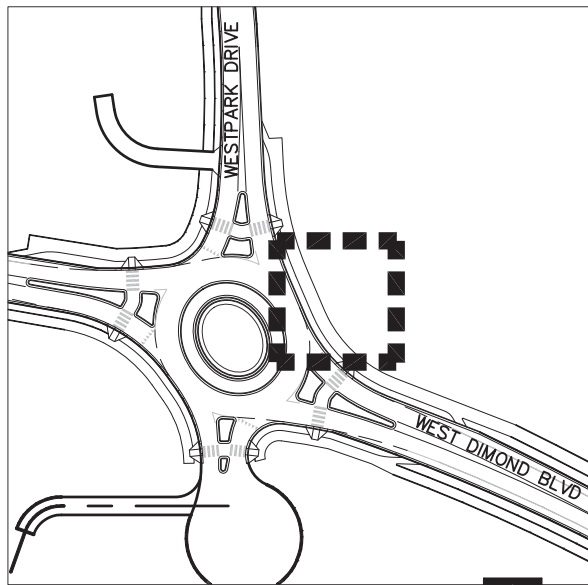
Landscape Plan

65% DESIGN
APRIL 2014

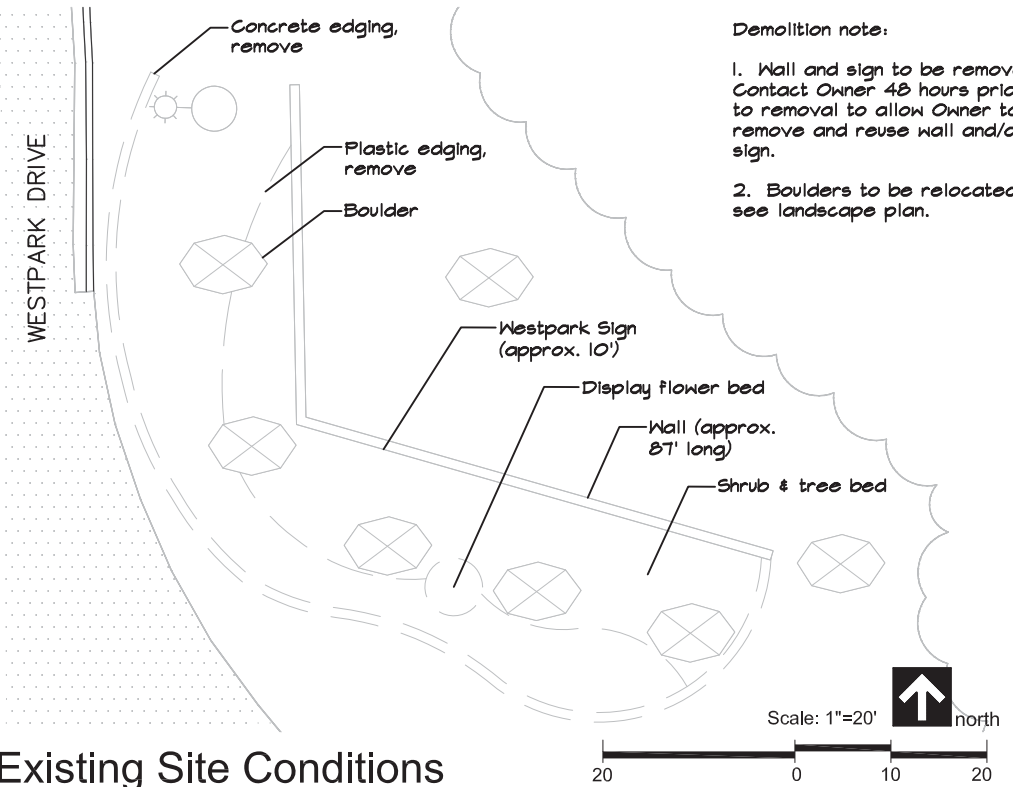
FIELD BOOKS	BM NO.	LOCATION	ELEV.	DATA	DRAWN BY	CHECKED BY	DATA	DRAWN BY	CHECKED BY	REV	DATE	DESCRIPTION	BY	REV	DATE	DESCRIPTION	BY
DESIGN				BASE			TELEPHONE										
STAKING				TOPOGRAPHY			ELECTRIC										
ASBUILT				PROFILE			CABLE TV										
CONTRACTOR				SANITARY SEWER			DESIGN										
INSPECTOR				STORM SEWER			QUANTITIES										
CONSTRUCTION RECORD				WATER			MUN. FINAL CHK.										
				GAS													
				PLAN CHECK													
				REVISIONS													



PROJECT MANAGEMENT AND ENGINEERING DIVISION	
05-05 WEST DIMOND BOULEVARD UPGRADE PHASE I: WESTPARK DRIVE TO SAND LAKE ROAD	
LANDSCAPE PLAN	
SCALE	DATE 4/10/14 GRID 2323 2324 2423 2424
ACCT. NO.	SHEET 72 of 76

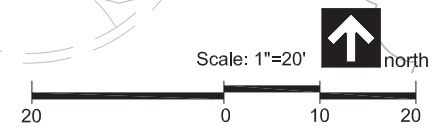


Key Location Map

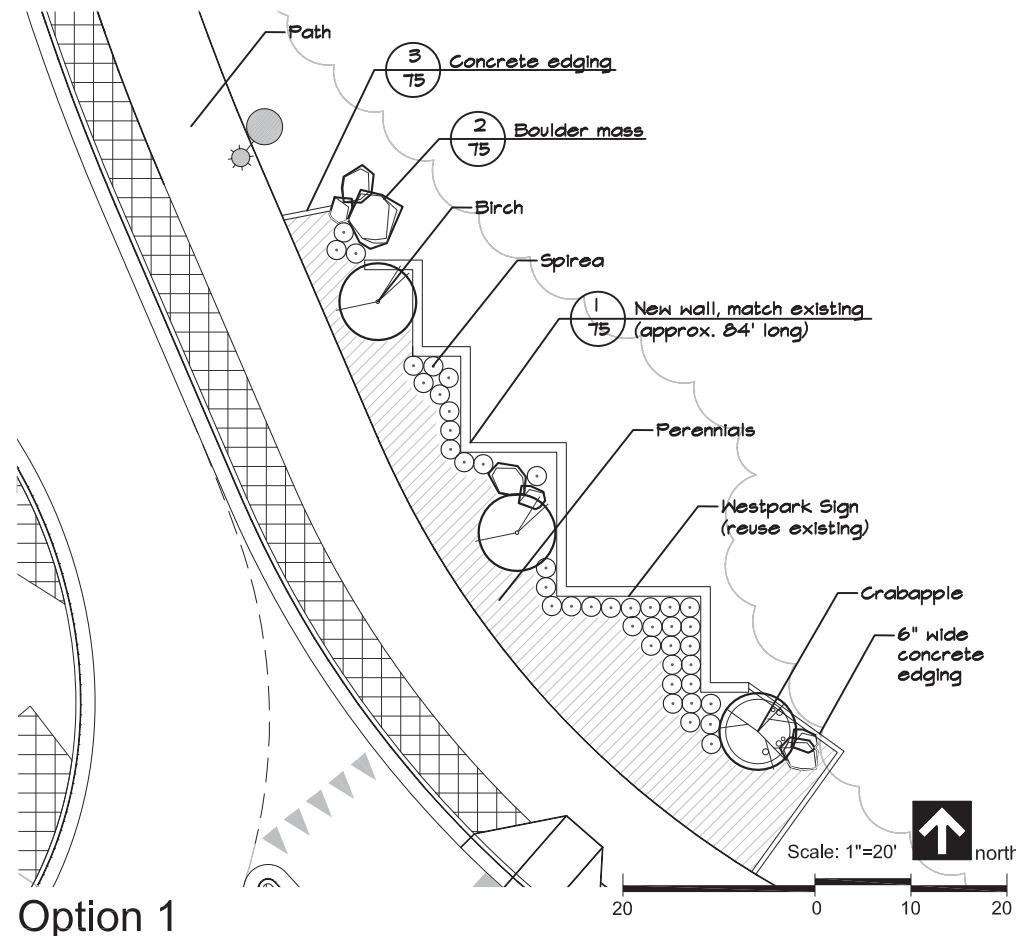


Existing Site Conditions

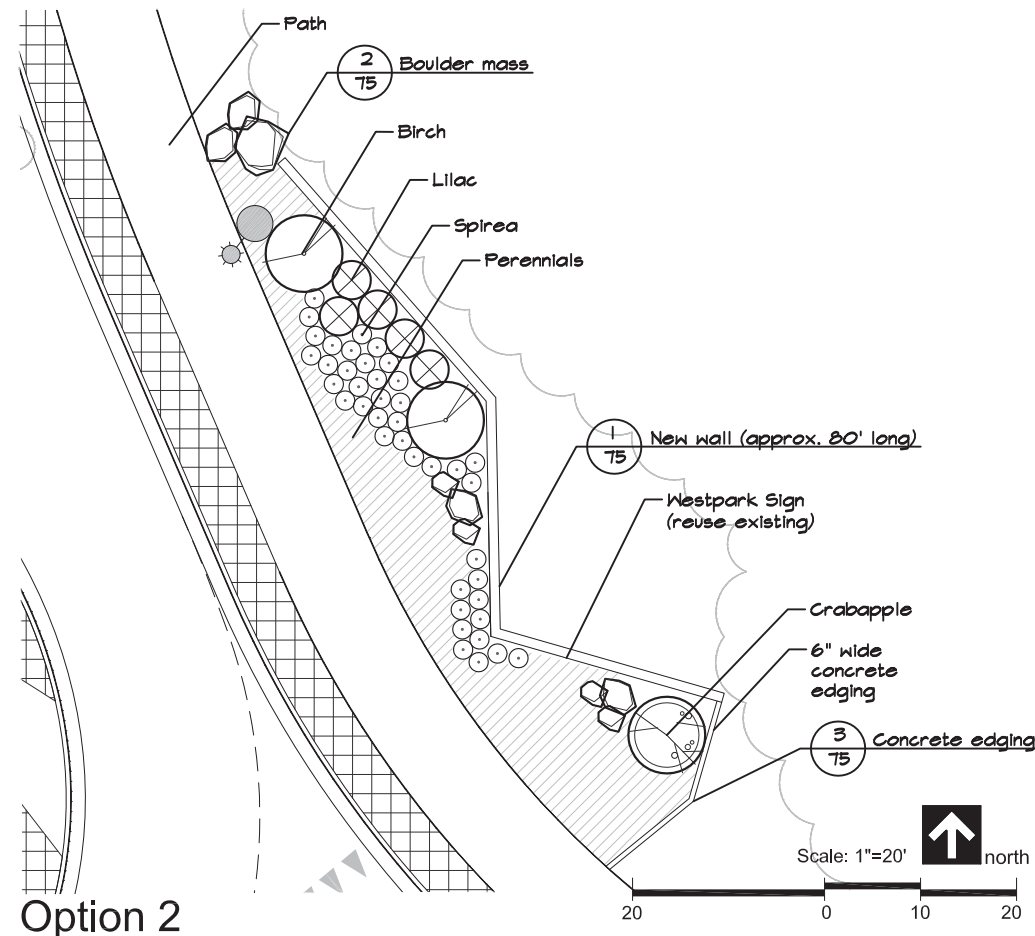
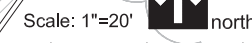
Demolition note:
 1. Wall and sign to be removed. Contact Owner 48 hours prior to removal to allow Owner to remove and reuse wall and/or sign.
 2. Boulders to be relocated, see landscape plan.



View from West Dimond Blvd.



Option 1



Option 2



West Dimond Boulevard Westpark Sign Replacement Options

65% DESIGN
APRIL 2014

Plotted: 4/10/2014 9:24 AM File Location: H:\Projects\West Dimond Blvd\65% West Dimond Blvd\L-1 West Dimond Blvd-65.15.dwg

FIELD BOOKS	BM NO.	LOCATION	ELEV.	DATA	DRAWN BY	CHECKED BY	DATA	DRAWN BY	CHECKED BY	REV	DATE	DESCRIPTION	BY	REV	DATE	DESCRIPTION	BY
DESIGN				BASE			TELEPHONE										
STAKING				TOPOGRAPHY			ELECTRIC										
ASBUILT				PROFILE			CABLE TV										
CONTRACTOR				SANITARY SEWER			DESIGN										
INSPECTOR				STORM SEWER			QUANTITIES										
				WATER			MUN. FINAL CHK.										
				GAS													
CONSTRUCTION RECORD				PLAN CHECK													
				REVISIONS													

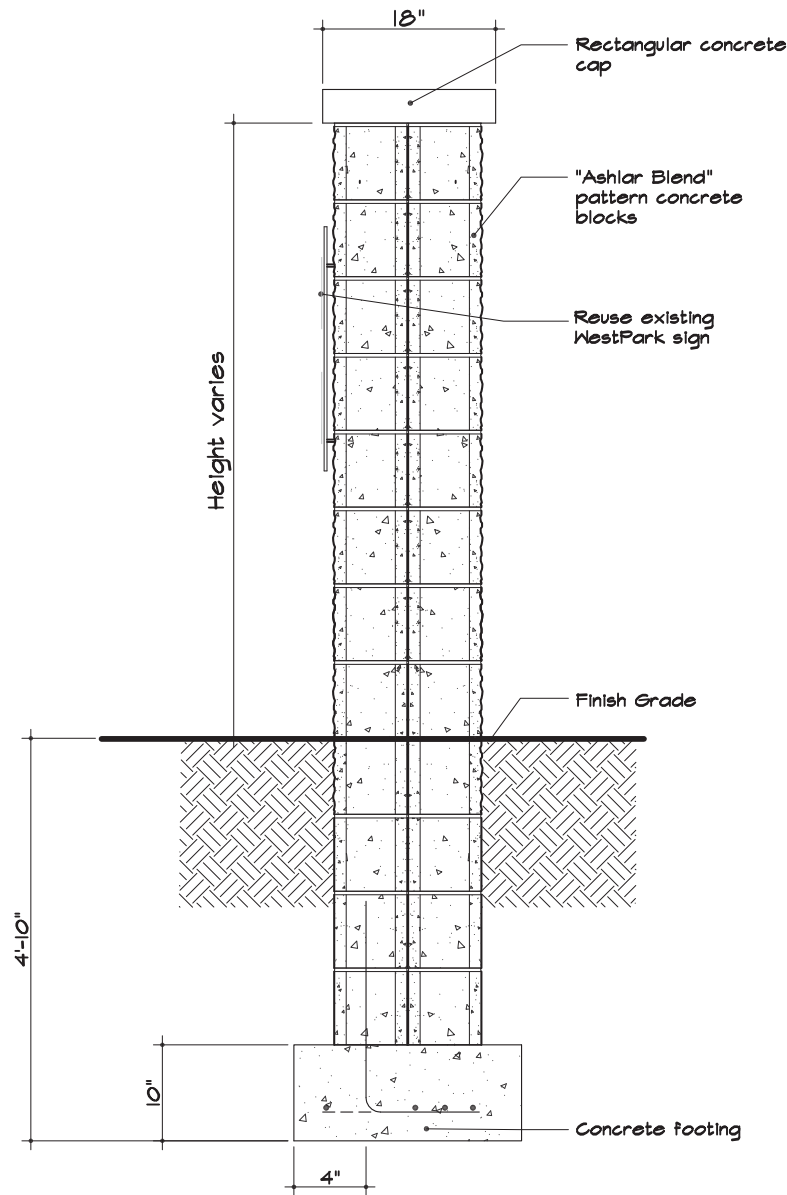
earthscape



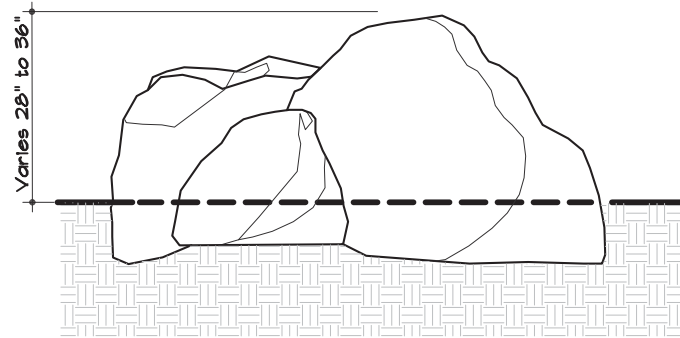
PROJECT MANAGEMENT AND ENGINEERING DIVISION	
05-05 WEST DIMOND BOULEVARD UPGRADE PHASE I: WESTPARK DRIVE TO SAND LAKE ROAD	
LANDSCAPE PLAN DETAILS	
SCALE	DATE 4/3/14 GRID 2323 2324 ACCT. NO. 2423 2424
SHEET 74 of 76	



Ashlar Blend Pattern

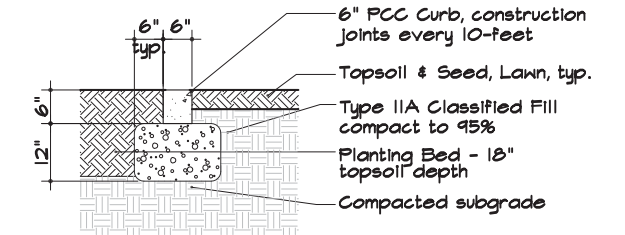


Cross Section



2 Boulder Detail
75

Bury Rocks 1/3 -1/2. Place rocks as shown on plans. All rocks to abut one another. Engineer to supervise placement. Rocks to be angular, varied diameters, minimum one 4-foot tall rock per mass, with natural appearing fractures and exposed faces.



3 Concrete Edging Detail
75

SCALE: NTS

SCALE: NTS

TBD

Elevation

1 Replacement Sign Detail
75

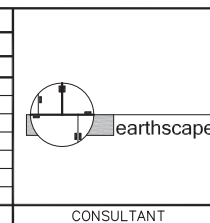
SCALE: NTS

65% DESIGN
APRIL 2014

File Location: H:\Projects\West Dimond Blvd\65%--West Dimond Blvd\L-1 West Dimond Blvd-65.15%.dwg

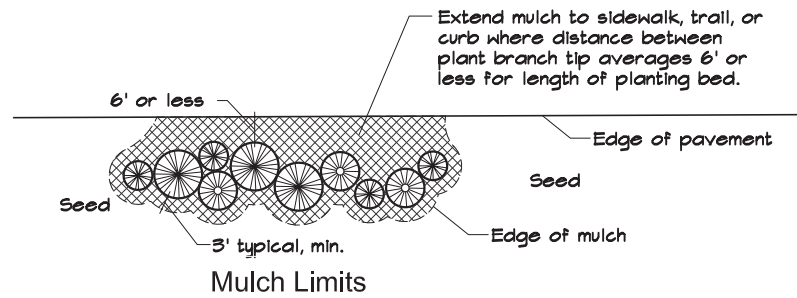
Plotted: 4/10/2014 9:26 AM

FIELD BOOKS	BM NO.	LOCATION	ELEV.	DATA	DRAWN BY	CHECKED BY	DATA	DRAWN BY	CHECKED BY	REV	DATE	DESCRIPTION	BY	REV	DATE	DESCRIPTION	BY
DESIGN				BASE			TELEPHONE										
STAKING				TOPOGRAPHY			ELECTRIC										
ASBUILT				PROFILE			CABLE TV										
CONTRACTOR				SANITARY SEWER			DESIGN										
INSPECTOR				STORM SEWER			QUANTITIES										
				WATER			MUN. FINAL CHK.										
				GAS													
CONSTRUCTION RECORD		VERTICAL DATUM		PLAN CHECK													



PROJECT MANAGEMENT AND ENGINEERING DIVISION	
05-05 WEST DIMOND BOULEVARD UPGRADE PHASE I: WESTPARK DRIVE TO SAND LAKE ROAD	
LANDSCAPE PLAN DETAILS	
SCALE	DATE 4/10/14 GRID 2323 2324 ACCT. NO. 2423 2424
SHEET 75 of 76	

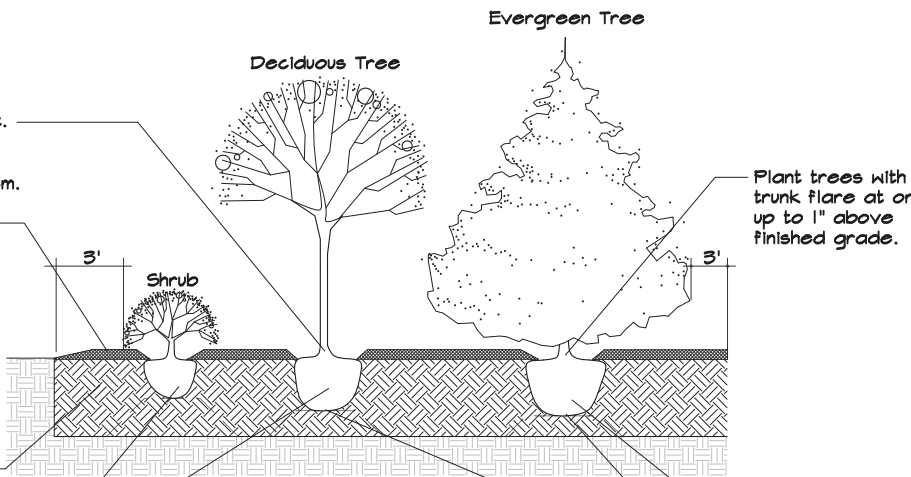
Plotted: 4/10/2014 9:26 AM File Location: H:\Projects\West Dimond Blvd\65%-West Dimond Blvd\1 West Dimond Blvd-65.15%.dwg



Plant trees with trunk flare at or up to 1" above finished grade. See detail 5, this sheet.

Shredded bark mulch 3" depth keep 6" away from trunk or stem. Mulch shall be continuous throughout planting bed.

Backfill with prepared topsoil thoroughly water as backfilling to prevent airpockets. Do not fertilize.



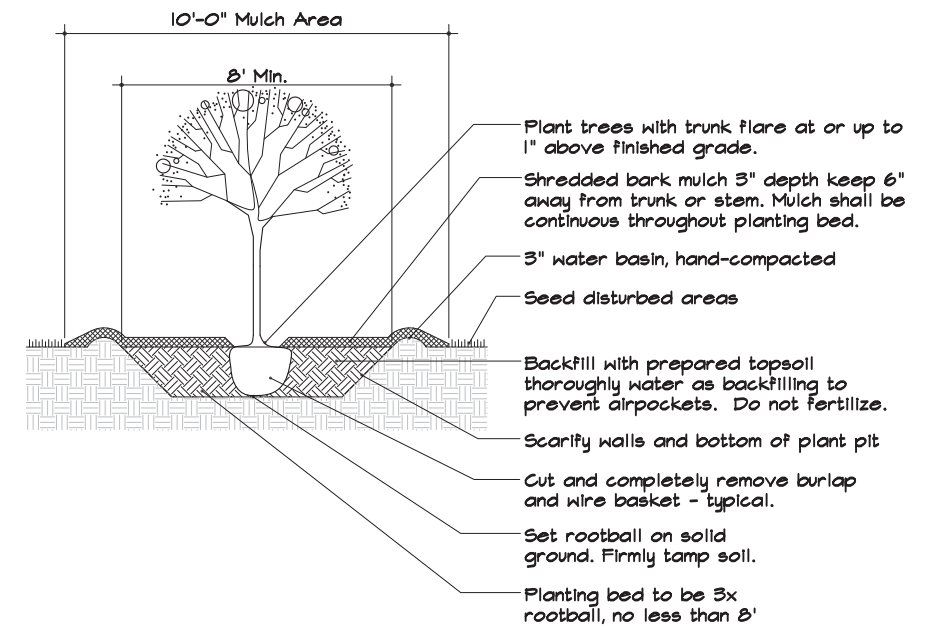
Notes:

1. Prepare planting bed as shown on plans:

- a. Excavate and remove soil
- b. Till subgrade
- c. Backfill with topsoil
- d. Install edging
- e. Plant trees and shrubs after landscape architect has approved staked locations

2. Contractor to verify location of utilities prior to excavation.

3. Several areas on plans require large areas of mulch. Contractor to provide mulch between plantings and building, up to property line, edging or existing vegetation, where planting beds are adjacent to existing vegetation.



Cut and completely remove burlap and wire basket - typical.

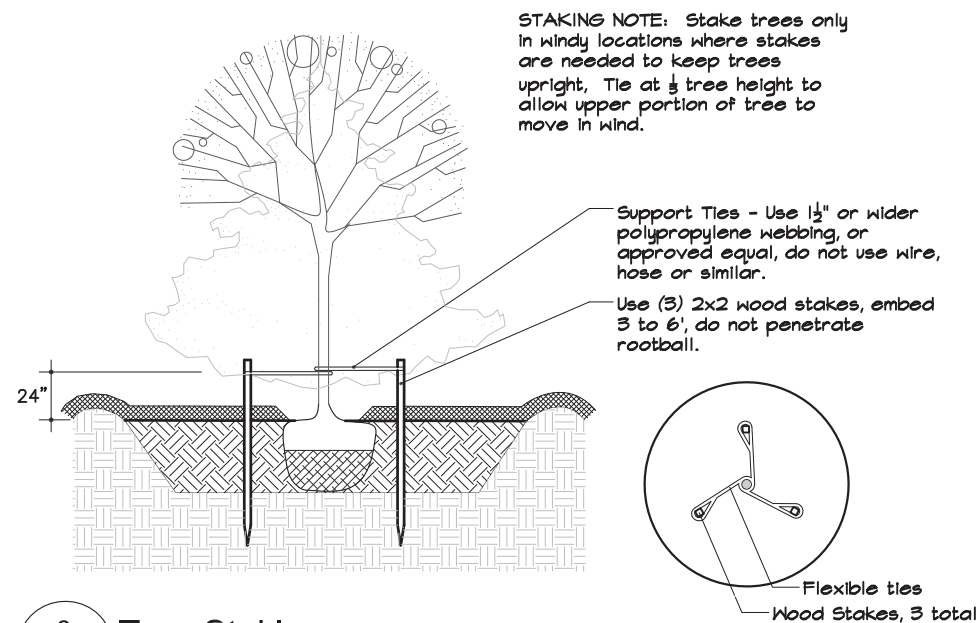
Set rootball on solid ground. Firmly tamp soil.

1 Planting Bed Detail
76

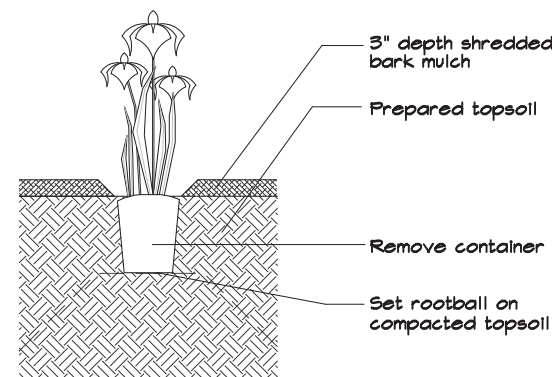
SCALE: NTS

2 Single Tree Planting
76

SCALE: NTS



STAKING NOTE: Stake trees only in windy locations where stakes are needed to keep trees upright. Tie at 1/3 tree height to allow upper portion of tree to move in wind.



3 Tree Staking
76

SCALE: NTS

4 Perennials
76

SCALE: NTS

5 Planting Depth Detail
76

SCALE: NTS

**65% DESIGN
APRIL 2014**

FIELD BOOKS	BM NO.	LOCATION	ELEV.	DATA	DRAWN BY	CHECKED BY	DATA	DRAWN BY	CHECKED BY	REV	DATE	DESCRIPTION	BY	REV	DATE	DESCRIPTION	BY	
DESIGN				BASE			TELEPHONE											
STAKING				TOPOGRAPHY			ELECTRIC											
ASBUILT				PROFILE			CABLE TV											
CONTRACTOR				SANITARY SEWER			DESIGN											
INSPECTOR				STORM SEWER			QUANTITIES											
CONSTRUCTION RECORD				WATER			MUN. FINAL CHK.											
				GAS														
				PLAN CHECK														
				REVISIONS														

earthscape

SEAL



PROJECT MANAGEMENT AND ENGINEERING DIVISION	
05-05 WEST DIMOND BOULEVARD UPGRADE PHASE I: WESTPARK DRIVE TO SAND LAKE ROAD	
LANDSCAPE PLAN DETAILS	
SCALE	DATE 4/10/14 GRID 2323 2324 ACCT. NO. 2423 2424
SHEET 76 of 76	