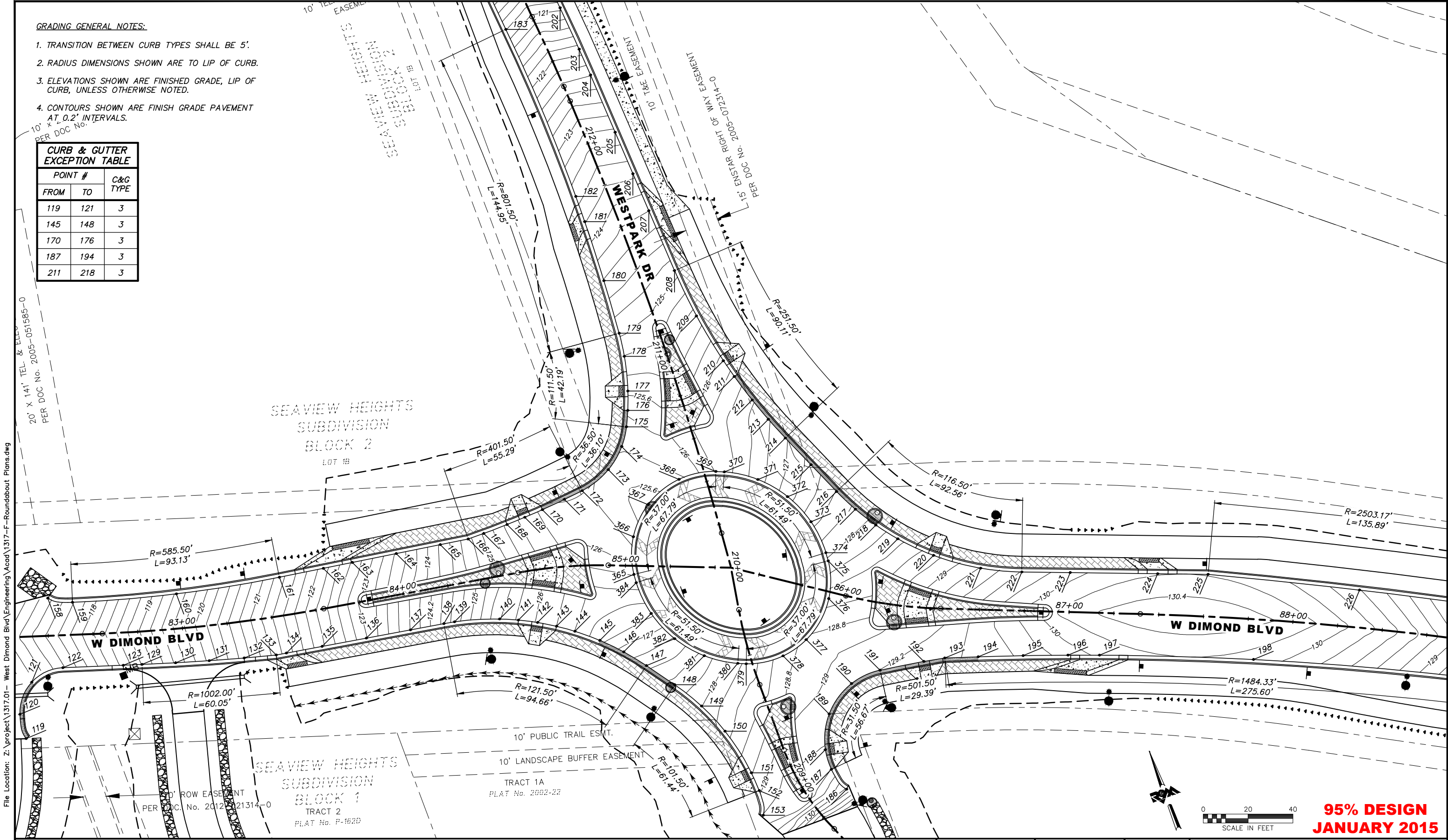


GRADING GENERAL NOTES:

1. TRANSITION BETWEEN CURB TYPES SHALL BE 5'.
2. RADIUS DIMENSIONS SHOWN ARE TO LIP OF CURB.
3. ELEVATIONS SHOWN ARE FINISHED GRADE, LIP OF CURB, UNLESS OTHERWISE NOTED.
4. CONTOURS SHOWN ARE FINISH GRADE PAVEMENT AT 0.2' INTERVALS.

CURB & GUTTER
EXCEPTION TABLE

POINT #		C&G TYPE
FROM	TO	
119	121	3
145	148	3
170	176	3
187	194	3
211	218	3



95% DESIGN
JANUARY 2015

FIELD BOOKS	BM NO.	LOCATION	ELEV.	DATA	DRAWN BY	CHECKED BY	DATA	DRAWN BY	CHECKED BY	REV	DATE	DESCRIPTION	BY	REV	DATE	DESCRIPTION	BY
DESIGN				BASE			TELEPHONE										
STAKING				TOPOGRAPHY			ELECTRIC										
ASBUILT				PROFILE			CABLE TV										
CONTRACTOR				SANITARY SEWER			DESIGN										
INSPECTOR				STORM SEWER			QUANTITIES										
				WATER			MUN. FINAL CHK.										
				GAS													
CONSTRUCTION RECORD																	

R&M
R&M Consultants, Inc.
9101 Vanguard Drive
Anchorage, Alaska 99507
907 522 1707 voice
907 522 3404 fax
www.rmconsult.com

STATE OF ALASKA
49TH
Marc Frutiger
No. CE 11888
REGISTERED PROFESSIONAL ENGINEER

MUNICIPALITY OF ANCHORAGE

PROJECT MANAGEMENT AND
ENGINEERING DIVISION
05-05 WEST DIMOND BOULEVARD UPGRADE
PHASE I: WESTPARK DRIVE TO SAND LAKE ROAD
GRADING PLAN - WESTPARK ROUNDABOUT
SCALE GRAPHIC DATE 1/30/15 GRID 2323 2324 2423 2424 SHEET 50 of 106




Plotted: 1/30/2015 1:17 PM File Location: Z:\project\317.01- West Dimond Blvd\Engineering\Acad\317- F-Roundabout Plans.dwg

WESTPARK ROUNDABOUT SW CURB				
POINT #	NORTHING	EASTING	ELEVATION	DESCRIPTION
119	311841.42	329632.59	117.91	END CURB TERMINATION TRANSITION
120	311852.52	329633.78	116.96	PC
121	311864.14	329643.75	116.76	MIDPOINT
122	311865.31	329659.01	117.37	PT
123	311856.92	329684.65	118.47	BEGIN CURB CUT
129	311854.32	329692.60	118.81	PC
130	311849.76	329706.91	119.43	1/4 ARC ANGLE
131	311845.42	329721.28	120.05	MIDPOINT
132	311841.11	329736.34	120.70	END CURB CUT
133	311837.37	329750.21	121.29	PT
134	311836.58	329754.74	121.48	BIKE RAMP
135	311833.80	329770.75	122.15	
136	311830.35	329790.53	122.98	
137	311826.92	329810.24	123.81	
138	311824.32	329825.21	124.46	PC
139	311823.40	329829.93	124.68	
140	311817.55	329849.20	125.58	
141	311814.19	329856.88	125.85	CURB RAMP EDGE
142	311810.17	329864.54	126.02	CURB RAMP
143	311805.63	329871.90	126.19	CURB RAMP EDGE
144	311800.66	329878.79	126.40	1/8 ARC ANGLE
145	311792.97	329887.78	126.74	1/4 ARC ANGLE
146	311784.44	329895.97	127.08	1/8 ARC ANGLE
147	311775.16	329903.30	127.35	PT
148	311762.77	329912.13	127.67	PC
149	311749.64	329920.07	127.99	
150	311735.46	329925.94	128.32	
151	311713.94	329930.48	128.78	CURB RAMP
152	311705.28	329930.98	128.97	PT, CURB RAMP EDGE, BEGIN CURB TERMINATION TRANSITION
153	311694.32	329928.81	129.21	END CURB

WESTPARK ROUNDABOUT NW CURB				
POINT #	NORTHING	EASTING	ELEVATION	DESCRIPTION
158	311896.78	329663.56		END CURB
159	311891.18	329673.22		PC, BEGIN CURB TERMINATION TRANSITION
160	311878.47	329718.01		MIDPOINT
161	311869.37	329763.66		PT
162	311866.23	329783.45	122.10	BIKE RAMP
163	311864.17	329796.48	122.63	
164	311861.04	329816.23	123.43	
165	311857.91	329835.99	124.23	
166	311855.92	329848.55	124.74	PC
167	311855.80	329855.93	125.03	
168	311855.88	329867.07	125.48	CURB RAMP EDGE
169	311856.15	329875.61	125.65	CURB RAMP
170	311856.60	329884.14	125.82	CURB RAMP EDGE
171	311857.44	329894.96	125.91	HIGH POINT
172	311858.34	329903.75	125.86	PCC
173	311863.03	329917.95	125.73	LOW POINT
174	311870.64	329927.18	125.83	1/4 ARC ANGLE
175	311878.11	329932.20	125.89	PCC
176	311884.80	329935.32	125.73	CURB RAMP EDGE
177	311892.90	329938.41	125.56	CURB RAMP
178	311907.97	329942.34	125.25	1/4 ARC ANGLE
179	311918.41	329943.79	124.97	PCC
180	311942.76	329945.63	124.41	
181	311970.48	329946.82	123.78	BIKE RAMP
182	311982.38	329947.04	123.51	
183	312063.17	329943.83		PT

WESTPARK ROUNDABOUT SE CURB				
POINT #	NORTHING	EASTING	ELEVATION	DESCRIPTION
186	311692.21	329967.71	130.05	BEGIN CURB
187	311702.89	329964.46	129.41	PC, CURB RAMP EDGE, END CURB TERMINATION TRANSITION
188	311712.05	329965.01	129.22	CURB RAMP
189	311726.40	329972.18	129.06	LOW POINT
190	311735.62	329986.30	129.13	1/4 ARC ANGLE
191	311736.79	330000.30	129.20	PCC
192	311733.58	330019.96	129.30	CURB RAMP
193	311731.78	330029.25	129.35	PCC
194	311727.08	330043.42	129.45	
195	311720.54	330062.36	129.64	
196	311713.76	330081.19	129.89	
197	311708.84	330094.37		BIKE RAMP
198	311683.00	330158.07		MIDPOINT

95% DESIGN
JANUARY 2015

														 R&M Consultants, Inc. 9101 Vanguard Drive Anchorage, Alaska 99507 907 522 1707 voice 907 522 3404 fax www.rmconsult.com						PROJECT MANAGEMENT AND ENGINEERING DIVISION							
FIELD BOOKS		BM NO.	LOCATION		ELEV.	DATA	DRAWN BY	CHECKED BY	DATA	DRAWN BY	CHECKED BY	REV	DATE	DESCRIPTION		BY	REV	DATE	DESCRIPTION		BY						
DESIGN						BASE			TELEPHONE																		
STAKING						TOPOGRAPHY			ELECTRIC																		
						PROFILE			CABLE TV																		
ASBUILT						SANITARY SEWER			DESIGN																		
CONTRACTOR		BASIS OF THIS DATUM				STORM SEWER			QUANTITIES																		
INSPECTOR						WATER			MUN. FINAL CHK.																		
						GAS																					
CONSTRUCTION RECORD		VERTICAL DATUM				PLAN CHECK				REVISIONS										CONSULTANT		SEAL		SCALE		DATE 1/30/15 GRID 2323 2324 2423 2424 ACCT. NO.	SHEET 52 of 106




Plotted: 1/30/2015 1:18 PM File Location: Z:\project\1317.01- West Dimond Blvd\Engineering\Acad\1317-F-Roundabout Plans.dwg

WESTPARK ROUNDABOUT NE CURB				
POINT #	NORTHING	EASTING	ELEVATION	DESCRIPTION
202	312063.70	329969.88	120.94	
203	312043.44	329971.42	121.89	
204	312030.87	329972.12	122.39	
205	312003.12	329973.46	123.25	
206	311982.96	329974.43	123.75	
207	311965.04	329975.30	124.20	BIKE RAMP
208	311935.98	329976.70	124.92	PC
209	311913.55	329978.79	125.50	1/4 ARC ANGLE
210	311890.63	329983.06	126.06	CURB RAMP
211	311882.32	329985.16	126.26	CURB RAMP EDGE
212	311869.72	329988.93	126.57	1/4 ARC ANGLE
213	311859.09	329992.68	126.78	1/8 ARC ANGLE
214	311848.65	329996.90	126.97	PT
215	311833.48	330003.43	127.27	MIDPOINT
216	311818.30	330009.97	127.61	PC
217	311807.92	330015.06	127.85	1/8 ARC ANGLE
218	311798.09	330021.16	128.08	1/4 ARC ANGLE
219	311788.92	330028.20	128.35	1/8 ARC ANGLE
220	311776.42	330040.57	128.72	CURB RAMP
221	311763.74	330058.26	129.19	
222	311755.74	330074.87	129.62	PT
223	311747.93	330095.01	129.92	
224	311733.83	330131.39		BIKE RAMP
225	311725.69	330152.39		PC
226	311695.50	330213.25		MIDPOINT

WESTPARK ROUNDABOUT CENTRAL ISLAND				
POINT #	NORTHING	EASTING	ELEVATION	DESCRIPTION
365	311815.23	329912.33	126.19	PC
366	311831.05	329917.97	125.67	1/4 ARC ANGLE
367	311842.21	329929.14	125.49	LOW POINT
368	311847.92	329946.01	125.72	1/4 ARC ANGLE
369	311845.48	329962.63	126.21	PT
370	311844.00	329966.14	126.30	PC
371	311835.59	329978.94	126.71	1/4 ARC ANGLE
372	311823.78	329988.70	127.12	MIDPOINT
373	311809.63	329994.55	127.53	1/4 ARC ANGLE
374	311794.38	329995.98	127.95	PT
375	311790.59	329995.65	128.03	PC
376	311774.76	329990.01	128.52	1/4 ARC ANGLE
377	311761.09	329974.20	128.84	HIGH POINT
378	311757.90	329961.97	128.73	1/4 ARC ANGLE
379	311760.33	329945.35	128.25	PT
380	311761.82	329941.84	128.15	PC
381	311770.23	329929.04	127.68	1/4 ARC ANGLE
382	311782.03	329919.28	127.22	MIDPOINT
383	311796.19	329913.43	126.76	1/4 ARC ANGLE
384	311811.43	329911.99	126.29	PT

WESTPARK ROUNDABOUT WEST MEDIAN				
POINT #	NORTHING	EASTING	ELEVATION	DESCRIPTION
385	311849.94	329796.83	123.02	PT
386	311847.55	329811.88	123.56	MIDPOINT
387	311845.17	329826.93	124.07	PC
388	311843.22	329841.11	124.54	MIDPOINT
389	311841.85	329855.35	125.01	PT
390	311840.65	329871.26	125.53	CURB RAMP EDGE
391	311840.27	329876.28	125.64	CURB RAMP
392	311839.90	329881.30	125.73	CURB RAMP EDGE
393	311839.36	329888.43	125.84	BEGIN CURB NOSE
394	311839.02	329892.93	125.90	PC
395	311837.04	329896.33	125.97	MIDPOINT
396	311833.15	329896.88	126.04	PRC
397	311828.82	329895.64	126.11	END CURB NOSE
398	311823.57	329894.53	126.24	MIDPOINT
399	311813.75	329893.59	126.46	PRC
400	311811.56	329892.19	126.42	MIDPOINT
401	311811.81	329889.59	126.43	PRC
402	311820.61	329876.25	126.10	CURB RAMP EDGE
403	311823.03	329871.87	126.01	CURB RAMP
404	311825.28	329867.40	125.90	CURB RAMP EDGE
405	311827.42	329862.71	125.75	MIDPOINT
406	311832.78	329848.10	125.17	1/4 ARC ANGLE
407	311836.40	329832.95	124.55	PT
408	311839.72	329814.31	123.79	MIDPOINT
409	311843.03	329795.67	123.04	PC
410	311847.06	329792.83	123.01	MIDPOINT

95% DESIGN
JANUARY 2015

														 R&M Consultants, Inc. 9101 Vanguard Drive Anchorage, Alaska 99507 907 522 1707 voice 907 522 3404 fax www.rmconsult.com						PROJECT MANAGEMENT AND ENGINEERING DIVISION						
FIELD BOOKS		BM NO.	LOCATION	ELEV.	DATA	DRAWN BY	CHECKED BY	DATA	DRAWN BY	CHECKED BY	REV	DATE	DESCRIPTION	BY	REV	DATE	DESCRIPTION	BY	05-05 WEST DIMOND BOULEVARD UPGRADE PHASE I: WESTPARK DRIVE TO SAND LAKE ROAD							
DESIGN					BASE			TELEPHONE											GRADING POINT TABLES - WESTPARK ROUNDABOUT							
STAKING					TOPOGRAPHY			ELECTRIC																		
					PROFILE			CABLE TV																		
ASBUILT					SANITARY SEWER			DESIGN																		
CONTRACTOR		BASIS OF THIS DATUM			STORM SEWER			QUANTITIES																		
INSPECTOR					WATER			MUN. FINAL CHK.																		
					GAS																					
CONSTRUCTION RECORD		VERTICAL DATUM			PLAN CHECK				REVISIONS										CONSULTANT		SEAL		SCALE		DATE 1/30/15 GRID 2323 2324 ACCT. NO. 2423 2424	SHEET 53 of 106




Plotted: 1/30/2015 1:18 PM File Location: Z:\project\1317.01- West Dimond Blvd\Engineering\Acad\1317-F--Roundabout Plans.dwg

WESTPARK ROUNDABOUT NORTH MEDIAN				
POINT #	NORTHING	EASTING	ELEVATION	DESCRIPTION
411	311914.30	329965.30	125.22	PRC
412	311911.02	329965.56	125.29	END CURB NOSE
413	311908.29	329965.81	125.36	MIDPOINT
414	311902.30	329966.46	125.49	PT
415	311892.16	329967.68	125.73	CURB RAMP EDGE
416	311887.17	329968.29	125.83	CURB RAMP
417	311882.17	329968.89	125.93	CURB RAMP EDGE
418	311874.94	329969.76	126.11	BEGIN CURB NOSE
419	311870.59	329970.29	126.21	PC
420	311866.81	329968.93	126.27	MIDPOINT
421	311865.61	329965.09	126.25	PRC
422	311866.19	329960.77	126.22	END CURB NOSE
423	311866.48	329956.45	126.14	MIDPOINT
424	311866.25	329947.78	125.97	PRC
425	311867.31	329945.50	125.87	MIDPOINT
426	311869.82	329945.30	125.77	PRC
427	311888.17	329952.44	125.49	CURB RAMP
428	311899.04	329955.17	125.33	PT
429	311906.89	329956.78	125.22	MIDPOINT
430	311911.51	329957.72	125.15	BEGIN CURB NOSE
431	311914.75	329958.38	125.10	PC
432	311917.54	329962.04	125.10	MIDPOINT

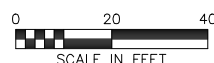
WESTPARK ROUNDABOUT SOUTH MEDIAN				
POINT #	NORTHING	EASTING	ELEVATION	DESCRIPTION
433	311695.86	329945.95	129.28	PCC
434	311702.24	329944.24	129.27	MIDPOINT
435	311708.78	329943.37	129.19	PRC
436	311715.21	329942.89	129.05	CURB RAMP
437	311732.04	329941.13	128.68	BEGIN CURB NOSE
438	311736.44	329940.55	128.59	PRC
439	311740.22	329941.80	128.59	MIDPOINT
440	311741.52	329945.57	128.59	PRC
441	311741.13	329949.97	128.66	END CURB NOSE
442	311741.07	329951.62	128.69	MIDPOINT
443	311741.25	329957.68	128.81	PRC
444	311740.19	329959.94	128.86	MIDPOINT
445	311737.71	329960.16	128.91	PRC
446	311731.05	329957.46	128.98	1/4 ARC ANGLE
447	311724.16	329955.42	129.05	MIDPOINT
448	311714.65	329953.74	129.15	CURB RAMP
449	311709.96	329953.37	129.20	PT
450	311700.54	329952.93	129.31	BEGIN CURB NOSE
451	311696.83	329952.76	129.31	PC
452	311693.52	329949.75	129.29	MIDPOINT




WESTPARK ROUNDABOUT EAST MEDIAN				
POINT #	NORTHING	EASTING	ELEVATION	DESCRIPTION
453	311731.95	330076.87	130.01	PRC
454	311733.00	330073.99	129.95	END CURB NOSE
455	311734.68	330069.36	129.86	PCC
456	311738.77	330057.38	129.63	MIDPOINT
457	311742.49	330045.28	129.40	PT
458	311745.53	330034.76	129.21	
459	311749.00	330022.79	129.11	CURB RAMP
460	311752.47	330010.81	129.01	BEGIN CURB NOSE
461	311753.68	330006.61	128.98	PC
462	311756.42	330003.65	128.89	MIDPOINT
463	311760.42	330004.07	128.80	PRC
464	311764.17	330006.28	128.71	END CURB NOSE
465	311769.20	330008.68	128.60	MIDPOINT
466	311778.62	330011.75	128.41	PRC
467	311780.47	330013.56	128.42	MIDPOINT
468	311779.71	330016.05	128.46	PRC
469	311765.36	330030.97	128.94	CURB RAMP
470	311753.36	330048.21	129.43	1/4 ARC ANGLE
471	311746.98	330060.57	129.75	PT
472	311742.70	330070.04	129.94	MIDPOINT
473	311738.43	330079.52	130.09	PC
474	311733.92	330081.32	130.17	MIDPOINT

95% DESIGN
JANUARY 2015

																					PROJECT MANAGEMENT AND ENGINEERING DIVISION							
FIELD BOOKS		BM NO.	LOCATION	ELEV.	DATA	DRAWN BY	CHECKED BY	DATA	DRAWN BY	CHECKED BY	REV	DATE	DESCRIPTION	BY	REV	DATE	DESCRIPTION	BY	05-05 WEST DIMOND BOULEVARD UPGRADE PHASE I: WESTPARK DRIVE TO SAND LAKE ROAD									
DESIGN					BASE			TELEPHONE											GRADING POINT TABLES - WESTPARK ROUNDABOUT									
STAKING					TOPOGRAPHY			ELECTRIC																				
					PROFILE			CABLE TV																				
ASBUILT					SANITARY SEWER			DESIGN																				
CONTRACTOR		BASIS OF THIS DATUM			STORM SEWER			QUANTITIES																				
INSPECTOR					WATER			MUN. FINAL CHK.																				
					GAS																							
CONSTRUCTION RECORD		VERTICAL DATUM			PLAN CHECK					REVISIONS										CONSULTANT		SEAL		SCALE		DATE 1/30/15 GRID 2323 2324 ACCT. NO. 2423 2424	SHEET 54 of 106	

File Location: Z: \project\1317.01- West Dimond Blvd\Engineering\Acad\1317-F-Roundabout Plans.dwg
 Plotted: 1/30/2015 1:18 PM



															  		PROJECT MANAGEMENT AND ENGINEERING DIVISION			
															05-05 WEST DIMOND BOULEVARD UPGRADE PHASE I: WESTPARK DRIVE TO SAND LAKE ROAD		SHEET 55 of 106			
															GRADING PLAN - SAND LAKE ROUNDABOUT					
															DATE 1/30/15 GRID 2333 2334 ACCT. NO. 2423 2424					
															SCALE GRAPHIC					
															CONSULTANT					
															SEAL					
															REVISIONS					
															PLAN CHECK					
															VERTICAL DATUM					
															CONSTRUCTION RECORD					
															INSPECTOR					
															CONTRACTOR					
															ASBUILT					
															STAKING					
															DESIGN					
															FIELD BOOKS					
															BM NO.					
															LOCATION					
															ELEV.					
															DATA					
															DRAWN BY					
															CHECKED BY					
															DATA					
															DRAWN BY					
															CHECKED BY					
															REV					
															DATE					
															DESCRIPTION					
															BY					
															REV					
															DATE					
															DESCRIPTION					
															BY					
															BASE					
															TOPOGRAPHY					
															PROFILE					
															SANITARY SEWER					
															STORM SEWER					
															QUANTITIES					
															MUN. FINAL CHK.					
															WATER					
															GAS					
															BASIS OF THIS DATUM					
															TELEPHONE					
															ELECTRIC					
															CABLE TV					
															DESIGN					




Plotted: 1/30/2015 1:19 PM File Location: Z:\project\1317.01- West Dimond Blvd\Engineering\Acad\1317-F--Roundabout Plans.dwg

SAND LAKE ROUNDABOUT SW CURB				
POINT #	NORTHING	EASTING	ELEVATION	DESCRIPTION
229	311239.65	330966.87		
230	311233.12	330979.68		PCC
231	311221.65	331004.62		MIDPOINT
232	311211.66	331030.20		PT
233	311210.12	331036.85	121.27	BIKE RAMP
234	311207.58	331047.77	121.35	
235	311203.49	331065.34	121.53	MIDPOINT
236	311199.40	331082.92	121.75	MIDPOINT
237	311195.31	331100.49	121.96	PC
238	311187.70	331122.49	122.23	1/4 ARC ANGLE
239	311181.38	331134.13	122.39	CURB RAMP
240	311176.52	331141.30	122.49	CURB RAMP EDGE
241	311168.17	331151.36	122.62	1/8 ARC ANGLE
242	311159.78	331159.45	122.71	1/4 ARC ANGLE
243	311150.59	331166.62	122.80	1/8 ARC ANGLE
244	311140.69	331172.79	122.88	PRC
245	311136.97	331175.00	122.93	MIDPOINT
246	311133.39	331177.45	122.97	PRC
247	311119.72	331185.89	123.21	1/4 ARC ANGLE
248	311101.84	331193.00	123.49	
249	311081.91	331196.70	123.78	CURB RAMP
250	311073.23	331197.05	123.95	PT, BEGIN CURB TERMINATION TRANSITION
251	311062.32	331194.71	124.04	END CURB TERMINATION TRANSITION

SAND LAKE ROUNDABOUT NW CURB				
POINT #	NORTHING	EASTING	ELEVATION	DESCRIPTION
267	311287.20	330947.71		PC
268	311261.88	330998.02		MIDPOINT
269	311244.79	331051.69	121.21	PT
270	311243.21	331058.40	121.30	BIKE RAMP
271	311238.02	331080.38	121.59	
272	311234.63	331094.73	121.78	
273	311231.24	331109.07	121.96	PC
274	311230.48	331131.13	122.24	1/4 ARC ANGLE
275	311230.73	331146.36	122.35	CURB RAMP, HIGH POINT
276	311231.85	331164.21	122.32	
277	311232.98	331175.19	122.22	
278	311234.45	331186.13	122.07	
279	311236.25	331197.02	121.92	PCC
280	311238.84	331205.02	121.80	MIDPOINT
281	311243.45	331212.05	121.69	PCC
282	311252.14	331221.09	121.49	1/4 ARC ANGLE
283	311260.71	331228.40	121.28	CURB RAMP
284	311276.07	331238.57	120.86	
285	311292.78	331246.29	120.37	
286	311311.85	331251.68	119.83	
287	311331.55	331253.90	119.29	PCC
288	311343.96	331254.22	118.96	
289	311363.58	331254.50	118.47	
290	311383.44	331254.48	118.13	
291	311403.31	331254.18	117.91	
292	311413.24	331253.92	117.83	

SAND LAKE ROUNDABOUT SE CURB				
POINT #	NORTHING	EASTING	ELEVATION	DESCRIPTION
305	311054.98	331226.53	124.52	END CURB TERMINATION TRANSITION
306	311066.09	331227.62	124.23	PC, BEGIN CURB TERMINATION TRANSITION
307	311074.31	331231.25	124.09	CURB RAMP
308	311081.55	331236.56	123.94	CURB RAMP EDGE
309	311089.50	331246.46	123.74	MIDPOINT
310	311094.43	331260.05	123.50	
311	311094.06	331276.17	123.24	PT
312	311091.49	331287.79	123.05	
313	311088.91	331299.40	122.89	CURB RAMP
314	311086.14	331311.93	122.78	
315	311083.36	331324.46	122.75	LOW POINT
316	311079.72	331340.87	122.80	
317	311076.08	331357.29	122.89	
318	311072.44	331373.71	122.98	BIKE RAMP
319	311068.78	331390.21	123.06	BEGIN CURB TERMINATION TRANSITION
320	311064.15	331400.37		END CURB TERMINATION TRANSITION
321	311065.89	331409.08		END TAPER, PC, R=758'
322	311065.23	331421.35		MIDPOINT
323	311064.77	331433.62		PT

95% DESIGN
JANUARY 2015

														 R&M Consultants, Inc. 9101 Vanguard Drive Anchorage, Alaska 99507 907 522 1707 voice 907 522 3404 fax www.rmconsult.com						PROJECT MANAGEMENT AND ENGINEERING DIVISION							
FIELD BOOKS		BM NO.	LOCATION		ELEV.	DATA	DRAWN BY	CHECKED BY	DATA	DRAWN BY	CHECKED BY	REV	DATE	DESCRIPTION		BY	REV	DATE	DESCRIPTION		BY						
DESIGN						BASE			TELEPHONE																		
STAKING						TOPOGRAPHY			ELECTRIC																		
						PROFILE			CABLE TV																		
ASBUILT						SANITARY SEWER			DESIGN																		
CONTRACTOR		BASIS OF THIS DATUM				STORM SEWER			QUANTITIES																		
INSPECTOR						WATER			MUN. FINAL CHK.																		
						GAS																					
CONSTRUCTION RECORD		VERTICAL DATUM				PLAN CHECK				REVISIONS										CONSULTANT		SEAL		SCALE		DATE 1/30/15 GRID 2323 2324 2423 2424 SHEET 57 of 106	




SAND LAKE ROUNDABOUT NE CURB				
POINT #	NORTHING	EASTING	ELEVATION	DESCRIPTION
333	311416.43	331293.21	117.64	
334	311408.15	331294.11	117.73	MIDPOINT
335	311387.08	331295.91	117.95	1/4 ARC ANGLE
336	311365.96	331297.00	118.26	PT, BEGIN TAPER
337	311357.26	331302.31	118.45	END CURB TERMINATION TRANSITION
338	311347.26	331297.35	118.70	PC, BEGIN CURB TERMINATION TRANSITION
339	311334.71	331294.42	119.01	BIKE RAMP
340	311323.98	331292.35	119.32	
341	311302.91	331289.44	119.98	
342	311281.70	331288.03	120.59	
343	311259.83	331288.15	121.14	
344	311242.20	331289.39	121.51	CURB RAMP
345	311233.70	331290.37	121.67	CURB RAMP EDGE
346	311214.43	331293.49	121.98	1/4 ARC ANGLE
347	311192.69	331298.59	122.25	1/8 ARC ANGLE
348	311171.39	331305.28	122.45	PCC
349	311157.65	331312.20	122.59	MIDPOINT
350	311146.06	331322.31	122.73	PCC
351	311142.42	331326.56	122.78	CURB RAMP
352	311132.05	331340.91	122.94	1/4 ARC ANGLE
353	311121.28	331361.55	123.09	MIDPOINR
354	311114.04	331383.68	123.18	1/4 ARC ANGLE
355	311110.53	331406.70	123.26	PT
356	311109.57	331421.72	123.31	
357	311108.80	331431.69	123.35	
358	311107.42	331451.64	123.42	
359	311102.10	331528.66		BIKE RAMP
360	311101.47	331537.69		BEGIN CURB TERMINATION TRANSITION
361	311102.93	331550.25		END CURB TERMINATION TRANSITION

SAND LAKE ROUNDABOUT TRUCK APRON				
POINT #	NORTHING	EASTING	DESCRIPTION	
494	311186.00	331198.30	PC	
495	311196.64	331206.31	MIDPOINT	
496	311200.52	331219.04	PT	
497	311200.50	331220.14	PC	
498	311193.42	331244.60	MIDPOINT	
499	311175.02	331262.20	PT	
500	311170.89	331264.46	PC	
501	311160.26	331266.65	MIDPOINT	
502	311150.24	331262.50	PT	
503	311149.67	331262.03	PC	
504	311136.87	331241.43	MIDPOINT	
505	311139.14	331217.27	PCC	
506	311141.27	331213.58	MIDPOINT	
507	311144.12	331210.40	PT	
508	311149.38	331205.65	PC	
509	311166.52	331196.97	MIDPOINT	
510	311185.69	331198.20	PT	

SAND LAKE ROUNDABOUT CENTRAL ISLAND				
POINT #	NORTHING	EASTING	ELEVATION	DESCRIPTION
475	311193.82	331185.25	122.05	PCC
476	311208.01	331197.10	121.75	MIDPOINT
477	311213.10	331214.88	121.44	PT
478	311213.00	331220.37	121.39	PC
479	311210.91	331235.13	121.32	LOW POINT
480	311204.12	331251.07	121.46	MIDPOINT
481	311194.03	331263.65	121.71	1/4 ARC ANGLE
482	311181.02	331273.17	121.97	PT
483	311176.24	331275.78	122.03	PC
484	311158.15	331279.51	122.39	MIDPOINT
485	311141.08	331272.44	122.75	PCC
486	311129.28	331258.52	123.05	1/8 ARC ANGLE
487	311123.09	331241.36	123.31	1/4 ARC ANGLE
488	311122.42	331230.14	123.35	HIGH POINT
489	311123.26	331223.11	123.32	1/8 ARC ANGLE
490	311129.79	331206.07	123.10	MIDPOINT
491	311141.85	331192.38	122.84	1/8 ARC ANGLE
492	311157.93	331183.75	122.58	1/4 ARC ANGLE
493	311176.01	331181.27	122.32	1/8 ARC ANGLE

SAND LAKE ROUNDABOUT WEST MEDIAN				
POINT #	NORTHING	EASTING	ELEVATION	DESCRIPTION
511	311217.82	331093.28	121.82	PRC
512	311217.44	331096.50	121.85	END CURB NOSE
513	311216.65	331104.13	121.91	MIDPOINT
514	311215.81	331115.01	122.00	PT
515	311214.83	331131.00	122.14	
516	311213.84	331146.99	122.27	CURB RAMP
517	311212.96	331161.12	122.30	BEGIN CURB NOSE
518	311212.71	331165.21	122.27	PC
519	311210.50	331168.81	122.25	MIDPOINT
520	311206.28	331169.00	122.23	PRC
521	311202.56	331167.38	122.22	END CURB NOSE
522	311195.06	331164.99	122.31	MIDPOINT
523	311183.25	331163.34	122.44	PRC
524	311181.06	331161.86	122.46	MIDPOINT
525	311181.42	331159.24	122.47	PRC
526	311189.28	331148.72	122.46	1/4 ARC ANGLE
527	311193.59	331141.73	122.43	CURB RAMP
528	311201.34	331125.41	122.30	1/4 ARC ANGLE
529	311205.40	331112.92	122.17	PT
530	311208.18	331102.43	122.07	MIDPOINT
531	311210.97	331091.95	121.96	PC
532	311215.01	331089.41	121.84	MIDPOINT

95% DESIGN
JANUARY 2015

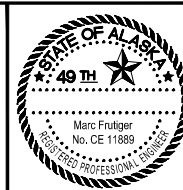
														 R&M Consultants, Inc. 9101 Vanguard Drive Anchorage, Alaska 99507 907 522 1707 voice 907 522 3404 fax www.rmconsult.com						PROJECT MANAGEMENT AND ENGINEERING DIVISION											
FIELD BOOKS		BM NO.	LOCATION		ELEV.	DATA	DRAWN BY	CHECKED BY	DATA	DRAWN BY	CHECKED BY	REV	DATE	DESCRIPTION		BY	REV	DATE	DESCRIPTION		BY										
DESIGN						BASE			TELEPHONE																						
STAKING						TOPOGRAPHY			ELECTRIC																						
						PROFILE			CABLE TV																						
ASBUILT						SANITARY SEWER			DESIGN																						
CONTRACTOR		BASIS OF THIS DATUM				STORM SEWER			QUANTITIES																						
INSPECTOR						WATER			MUN. FINAL CHK.																						
						GAS																									
CONSTRUCTION RECORD						VERTICAL DATUM				PLAN CHECK				REVISIONS								CONSULTANT		SEAL		SCALE		DATE 1/30/15 GRID 2323 2324 2423 2424		SHEET 58 of 106	

SAND LAKE ROUNDABOUT SOUTH MEDIAN				
POINT #	NORTHING	EASTING	ELEVATION	DESCRIPTION
570	311062.16	331206.63	124.19	PRC
571	311072.52	331208.28	124.14	
572	311082.98	331209.19	123.94	CURB RAMP
573	311095.81	331209.30	123.68	BEGIN CURB NOSE
574	311100.18	331209.08	123.60	PRC
575	311103.88	331210.64	123.59	MIDPOINT
576	311104.86	331214.54	123.58	PRC
577	311104.06	331218.83	123.57	END CURB NOSE
578	311103.73	331221.28	123.57	MIDPOINT
579	311103.27	331228.10	123.56	PRC
580	311101.96	331230.26	123.61	MIDPOINT
581	311099.43	331230.17	123.66	PRC
582	311090.23	331224.99	123.86	MIDPOINT
583	311080.53	331220.82	124.06	PT, CURB RAMP
584	311070.40	331217.09	124.26	MIDPOINT
585	311060.28	331213.35	124.23	PC
586	311058.12	331209.13	124.21	MIDPOINT

SAND LAKE ROUNDABOUT EAST MEDIAN				
POINT #	NORTHING	EASTING	ELEVATION	DESCRIPTION
587	311084.15	331440.80	123.71	PCC
588	311085.13	331422.72	123.61	1/8 ARC ANGLE
589	311086.49	331404.66	123.51	1/4 ARC ANGLE
590	311088.24	331386.64	123.41	1/8 ARC ANGLE
591	311090.37	331368.66	123.32	MIDPOINT
592	311092.88	331350.73	123.22	1/8 ARC ANGLE
593	311095.77	331332.86	123.12	1/4 ARC ANGLE
594	311099.05	331315.05	123.05	1/8 ARC ANGLE
595	311101.65	331302.23	123.05	CURB RAMP
596	311102.70	331297.31	123.07	PCC
597	311105.65	331287.10	123.12	MIDPOINT
598	311107.76	331280.40	123.16	BEGIN CURB NOSE
599	311108.89	331276.97	123.18	PCC
600	311112.42	331273.97	123.15	MIDPOINT
601	311116.73	331275.66	123.12	PRC
602	311118.96	331278.41	123.10	END CURB NOSE
603	311128.93	331287.75	122.94	MIDPOINT
604	311143.92	331296.12	122.75	PRC
605	311145.46	331297.96	122.75	MIDPOINT
606	311144.73	331300.25	122.76	PRC
607	311137.12	331308.06	122.87	
608	311130.05	331316.36	122.93	CURB RAMP
609	311124.18	331324.24	122.99	
610	311118.80	331332.46	123.05	1/8 ARC ANGLE
611	311112.11	331344.54	123.13	MIDPOINT
612	311106.48	331357.16	123.21	1/8 ARC ANGLE
613	311101.96	331370.22	123.29	1/4 ARC ANGLE
614	311098.58	331383.62	123.37	1/8 ARC ANGLE
615	311096.36	331397.25	123.44	PT
616	311094.61	331411.96	123.53	
617	311092.87	331426.66	123.62	
618	311091.12	331441.36	123.70	PC
619	311087.36	331444.44	123.78	MIDPOINT



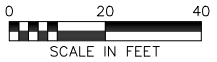
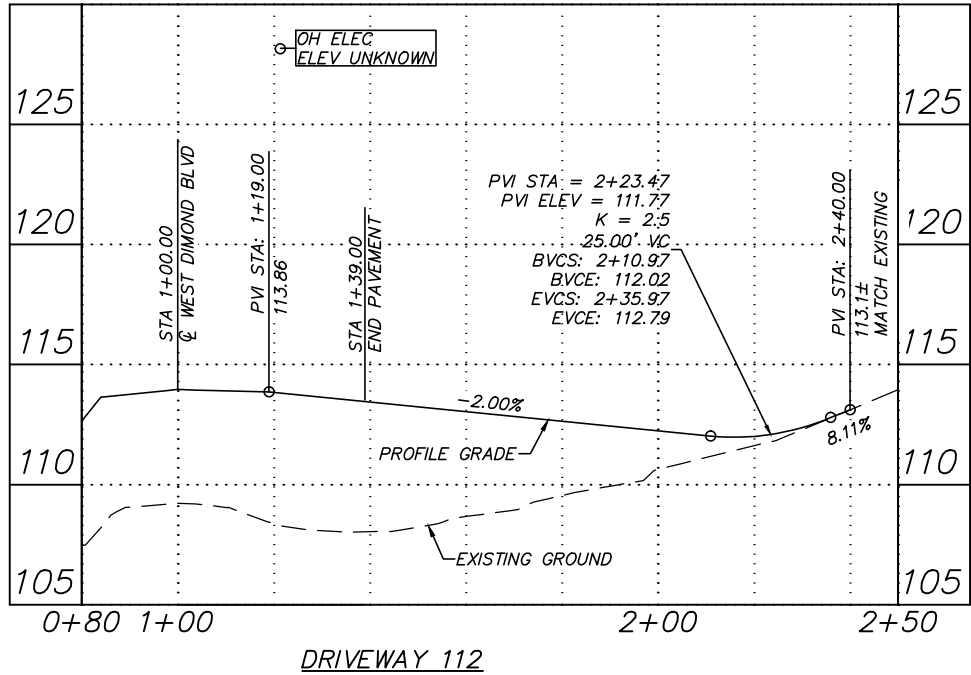
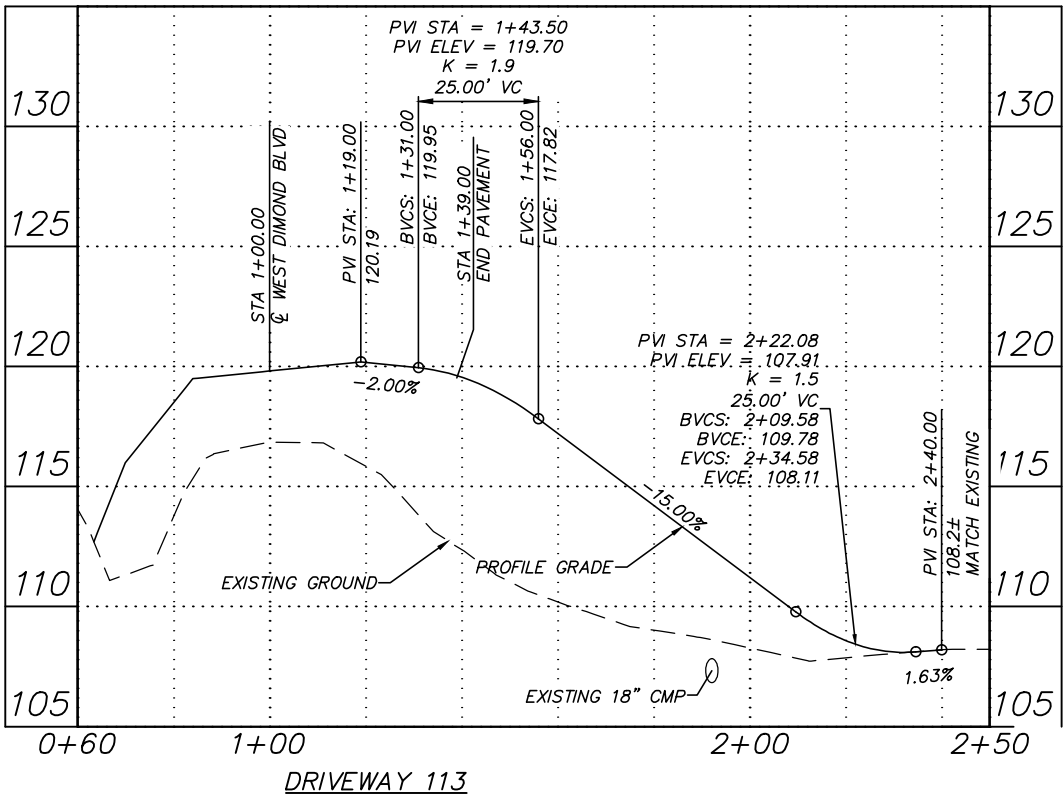
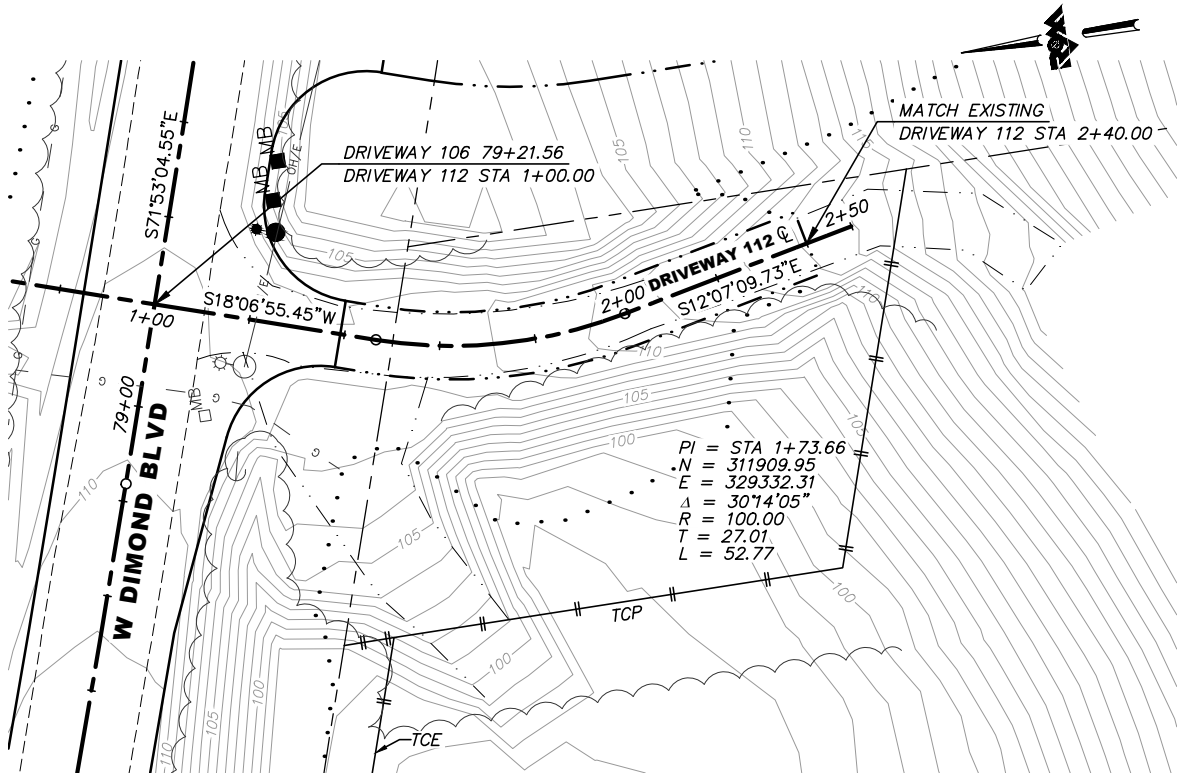
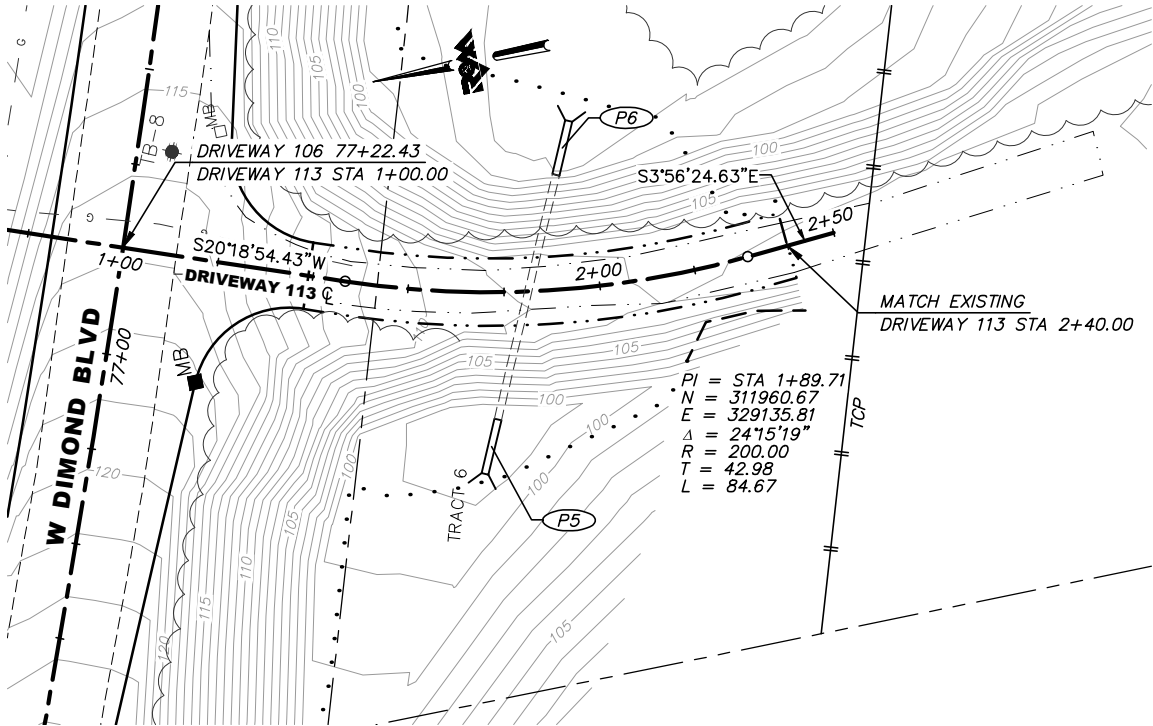
R&M Consultants, Inc.
9101 Vanguard Drive
Anchorage, Alaska 99507
907 522 1707 voice
907 522 3404 fax
www.rmconsult.com



PROJECT MANAGEMENT AND ENGINEERING DIVISION				
05-05	WEST DIMOND BOULEVARD UPGRADE PHASE I: WESTPARK DRIVE TO SAND LAKE ROAD			
GRADING POINT TABLES - SAND LAKE ROUNDABOUT				
SCALE	DATE	1/30/15	GRID	2323 2324 2423 2424
	ACCT. NO.			
SHEET				59 of 10

GENERAL DRIVEWAYS NOTES:

1. THE LOCATION OF SEPTIC SYSTEMS SHOWN ON PLAN SHEETS IS APPROXIMATE. CONTRACTOR IS TO VERIFY THE LOCATION OF ALL BURIED SEPTIC FACILITIES AND BURIED UTILITIES BEFORE COMMENCING WORK.
2. CONTOURS SHOWN ARE EXISTING GROUND.
3. SEE SHEET 48 FOR STORM DRAIN & CULVERT PIPE SUMMARY TABLES.



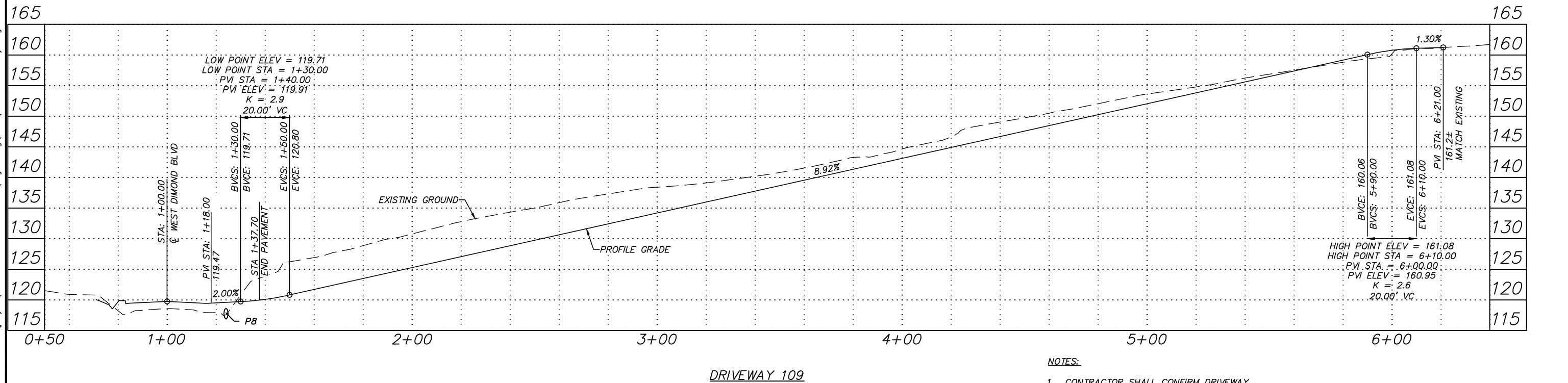
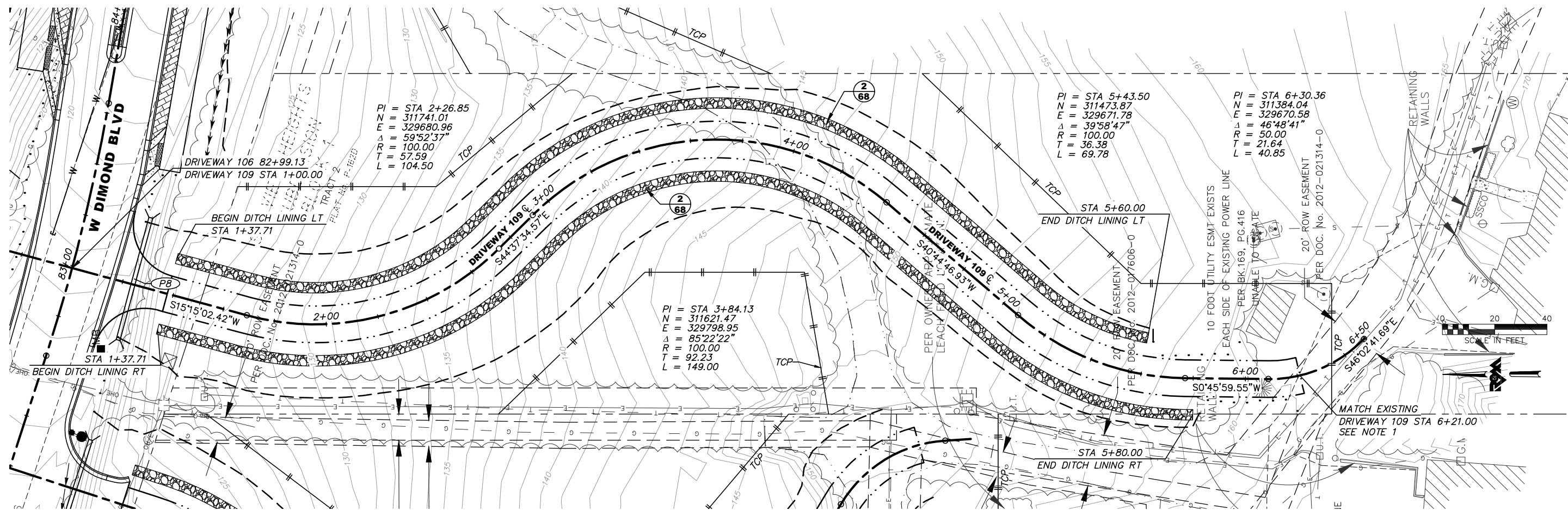
**95% DESIGN
JANUARY 2015**

FIELD BOOKS	BM NO.	LOCATION	ELEV.	DATA	DRAWN BY	CHECKED BY	DATA	DRAWN BY	CHECKED BY	REV	DATE	DESCRIPTION	BY	REV	DATE	DESCRIPTION	BY
DESIGN				BASE			TELEPHONE										
STAKING				TOPOGRAPHY			ELECTRIC										
ASBUILT				PROFILE			CABLE TV										
CONTRACTOR				SANITARY SEWER			DESIGN										
INSPECTOR				STORM SEWER			QUANTITIES										
				WATER			MUN. FINAL CHK.										
				GAS													
CONSTRUCTION RECORD																	

R&M
R&M Consultants, Inc.
9101 Vanguard Drive
Anchorage, Alaska 99507
907 522 1707 voice
907 522 3404 fax
www.rmconsult.com





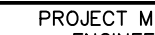
PROJECT MANAGEMENT AND ENGINEERING DIVISION				
05-05		WEST DIMOND BOULEVARD UPGRADE PHASE I: WESTPARK DRIVE TO SAND LAKE ROAD		
PLAN & PROFILE DRIVEWAYS - 112 & 113				
SCALE 1:20 H 1:4 V		DATE 1/30/15	GRID 2323 2324 2423 2424	SHEET 60 of 106

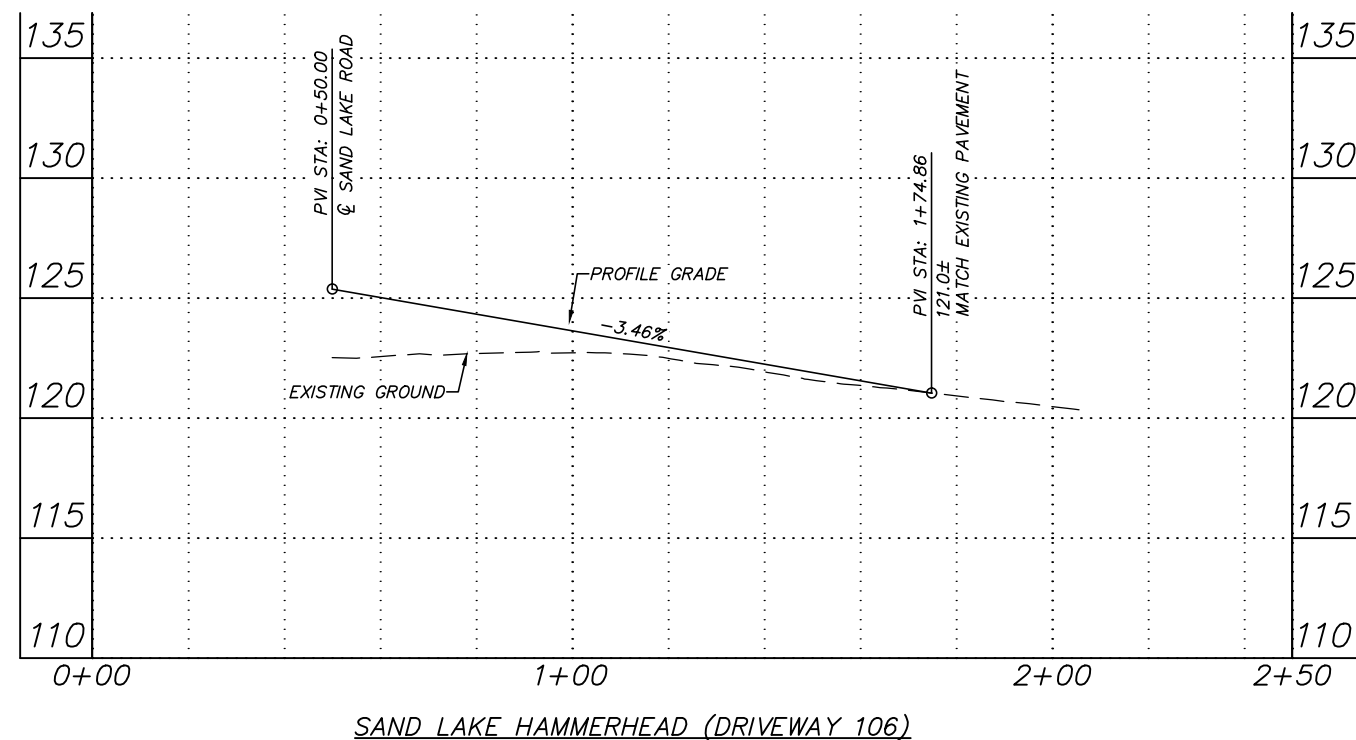
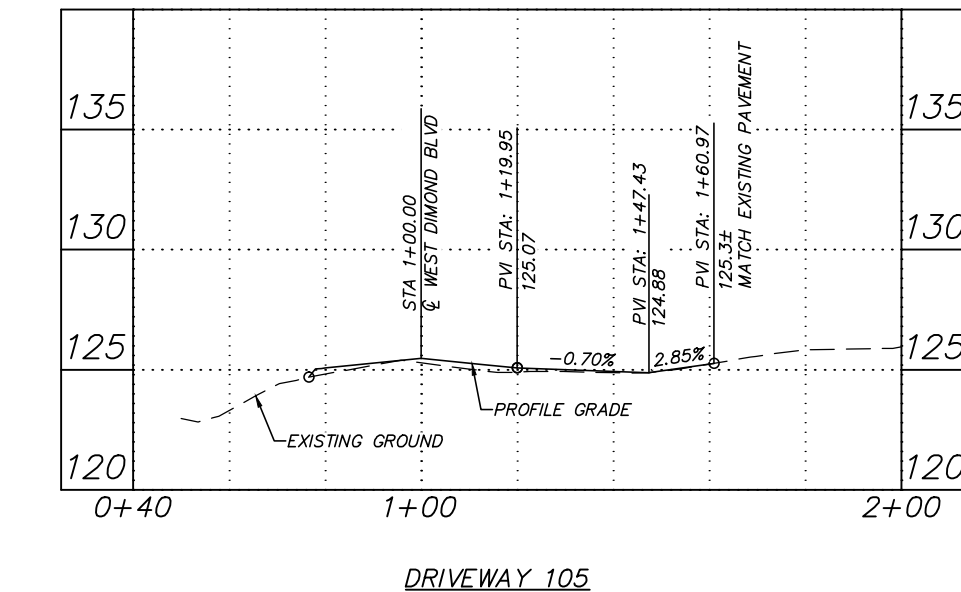


NOTES:

1. CONTRACTOR SHALL CONFIRM DRIVEWAY ALIGNMENT AND MATCH POINT NEAR RESIDENCE WITH THE ENGINEER PRIOR TO CONSTRUCTION.

**95% DESIGN
JANUARY 2015**




															 R&M Consultants, Inc. 9101 Vanguard Drive Anchorage, Alaska 99507 907 522 1707 voice 907 522 3404 fax www.rmconsult.com	 Marc Frutiger No. CE 11886 REGISTERED PROFESSIONAL ENGINEER		PROJECT MANAGEMENT AND ENGINEERING DIVISION			
																		05-05 WEST DIMOND BOULEVARD UPGRADE PHASE I: WESTPARK DRIVE TO SAND LAKE ROAD			
																		PLAN & PROFILE DRIVEWAY 109			
																		SCALE 1:20 H DATE 1/30/15 GRID 2323 2324 1:8 V ACCT. NO. 2423 2424			
															CONSULTANT		SEAL		SHEET 63 of 100		



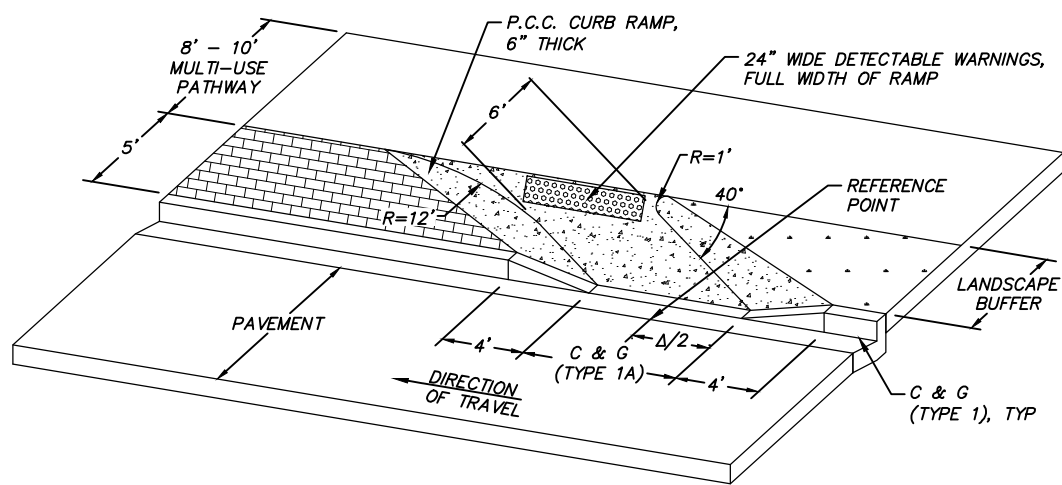
DRIVEWAY 106 NOTES:

1. SEE SHEETS 45 AND 49 FOR PAVEMENT LAYOUT POINT DATA.

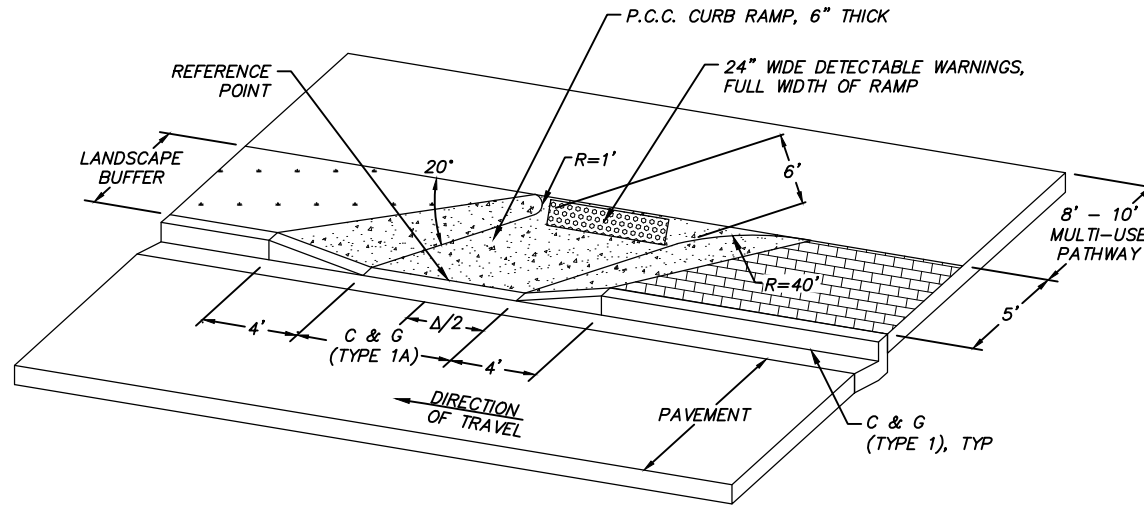
**95% DESIGN
JANUARY 2015**

															 R&M Consultants, Inc. 9101 Vanguard Drive Anchorage, Alaska 99507 907 522 1707 voice 907 522 3404 fax www.rmconsult.com		 49 TH Marc Frutiger No. CE 11889 LICENSED PROFESSIONAL ENGINEER		 MUNICIPALITY OF ANCHORAGE		PROJECT MANAGEMENT AND ENGINEERING DIVISION			
																					05-05 WEST DIMOND BOULEVARD UPGRADE PHASE I: WESTPARK DRIVE TO SAND LAKE ROAD			
															CONSULTANT		SEAL		PLAN & PROFILE DRIVEWAYS - 105 & 106					
																			SCALE 1:20 H DATE 1/30/15 GRID 2323 2324 1:4 V ACCT. NO. 2423 2424					
															CONSULTANT		SEAL		SHEET 64 of 106					

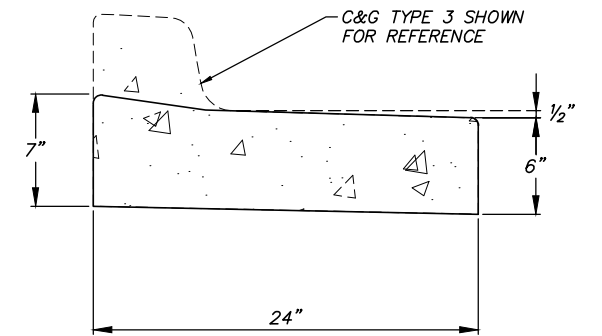
Plotted: 1/30/2015 9:58 AM File Location: Z:\project\1317.01- West Dimond Blvd\Engineering\Acad\1317-H-Details.dwg



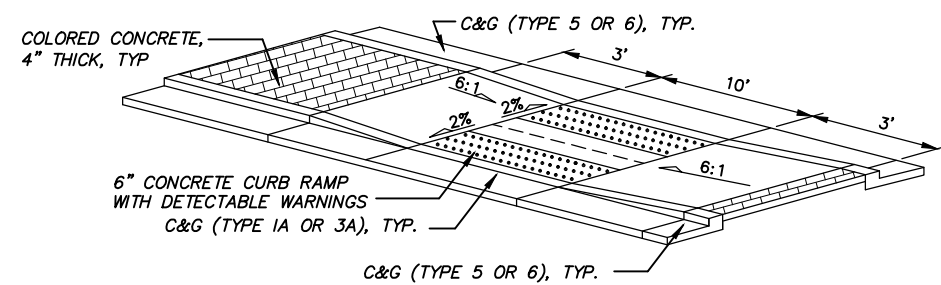
1 BIKE RAMP AT ENTRY
65 NTS



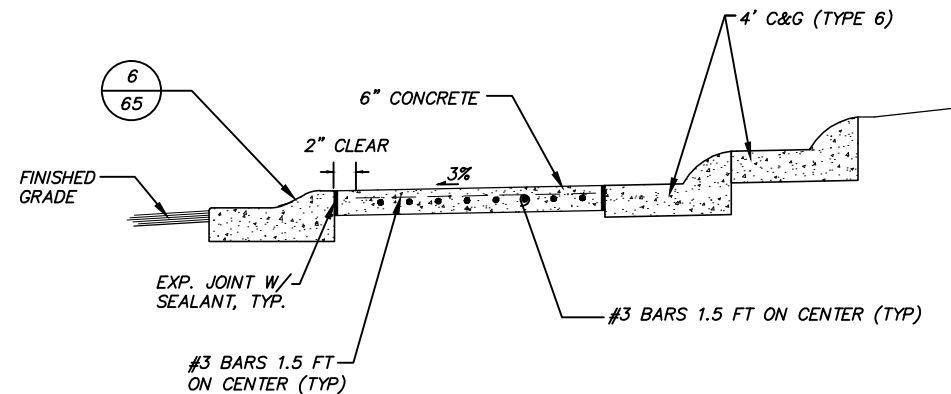
2 BIKE RAMP AT EXIT
65 NTS



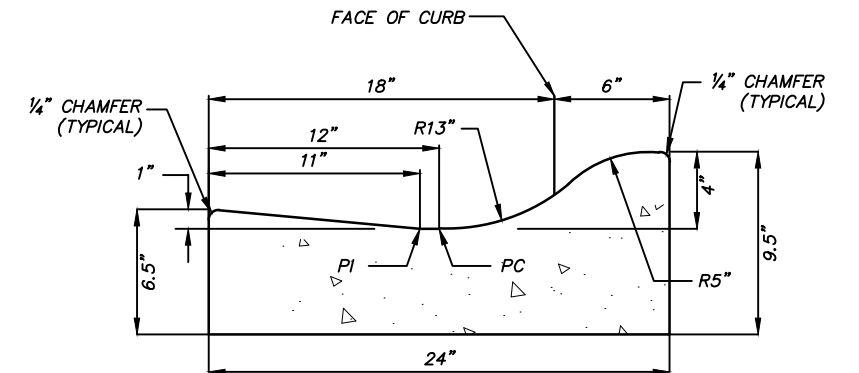
3 P.C.C. CURB AND GUTTER (TYPE 3A)
65 NTS



4 RAISED MEDIAN CURB RAMP
65 NTS



5 TRUCK APRON CROSS-SECTION
65 NTS






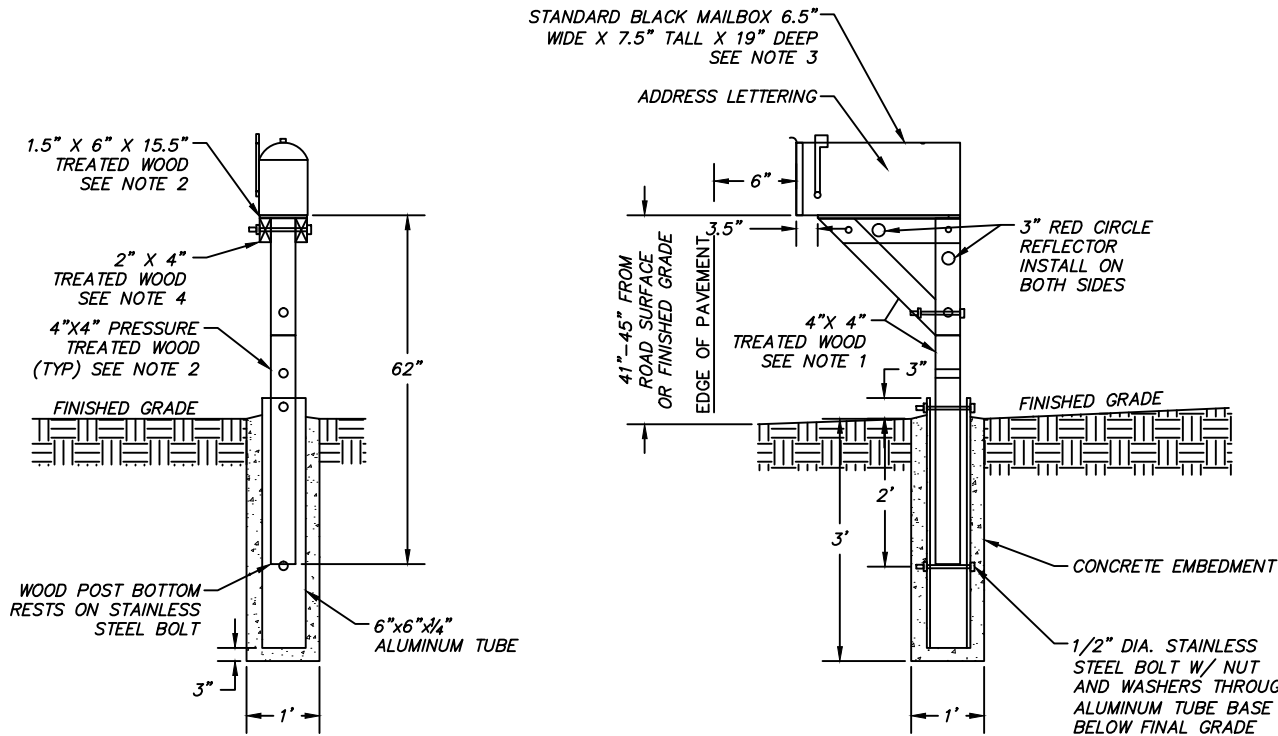
6 P.C.C. CURB & GUTTER (TRUCK APRON)
65 NTS

95% DESIGN
JANUARY 2015

PROJECT MANAGEMENT AND ENGINEERING DIVISION													
05-05 WEST DIMOND BOULEVARD UPGRADE PHASE I: WESTPARK DRIVE TO SAND LAKE ROAD													
DETAILS													
SCALE DATE 1/30/15 GRID 2323 2324 2423 2424 SHEET 65 of 106													

FIELD BOOKS	BM NO.	LOCATION	ELEV.	DATA	DRAWN BY	CHECKED BY	DATA	DRAWN BY	CHECKED BY	REV	DATE	DESCRIPTION	BY
DESIGN				BASE			TELEPHONE						
STAKING				TOPOGRAPHY			ELECTRIC						
ASBUILT				PROFILE			CABLE TV						
CONTRACTOR				SANITARY SEWER			DESIGN						
INSPECTOR				STORM SEWER			QUANTITIES						
				WATER			MUN. FINAL CHK.						
				GAS									
CONSTRUCTION RECORD				VERTICAL DATUM				PLAN CHECK				REVISIONS	
												CONSULTANT SEAL	

 R&M Consultants, Inc. 9101 Vanguard Drive Anchorage, Alaska 99507 907 522 1707 voice 907 522 3404 fax www.rmconsult.com	 STATE OF ALASKA 49TH Marc Frutiger No. CE 11888 REGISTERED PROFESSIONAL ENGINEER	 MUNICIPALITY OF ANCHORAGE
---	---	--

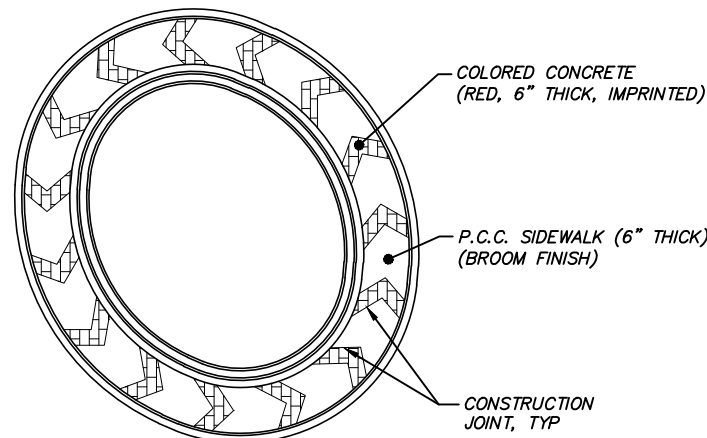


MAILBOX NOTES:

1. CONTRACTOR SHALL FIELD VERIFY MAILBOX LOCATION AND PHYSICAL ADDRESS PRIOR TO ORDERING MATERIAL OR INSTALLATION.
2. ALL WOOD SHALL BE ALL WEATHER WOOD SEALED WITH A SEMI-TRANSPARENT OIL BASED STAIN BROWN IN COLOR. SUBMIT COLOR SAMPLE FOR APPROVAL.
3. CONTRACTOR SHALL COORDINATE WITH THE MOA AND ENGINEER IN THE FIELD REGARDING MAILBOX SUBSTITUTIONS OR MAILBOX SIZING, PRIOR TO ORDERING MATERIALS.
4. THE LOCATION OF EXISTING FEATURES AND UTILITIES SHOWN ARE APPROXIMATE. IT SHALL BE THE CONTRACTOR'S RESPONSIBILITY TO FIELD VERIFY THE HORIZONTAL AND VERTICAL LOCATION OF ALL ENCOUNTERED UTILITIES AND TO RECORD ANY CHANGES ON THE RECORD DRAWINGS.
5. CONTRACTOR SHALL INSTALL MAILBOX ADDRESS LABELS PER PLAN. ADDRESS LABELS SHALL BE A MINIMUM OF ONE INCH IN HEIGHT AND INSTALLED VISIBLE TO ON COMING TRAFFIC. ADDRESS LABELS SHOULD BE CENTERED BOTH VERTICAL AND HORIZONTAL ON MAILBOX.
6. CUT-OFF EXCESS BOLT AND FILE SMOOTH, AFTER TIGHTENING

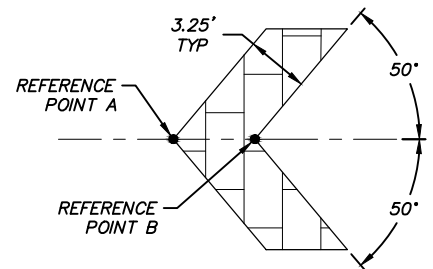
1
66 MAILBOX INSTALLATION
NTS

70.22 - FURNISH & INSTALL INDIVIDUAL MAILBOX SCHEDULE			
REFERENCE ALIGNMENT	STATION	OFFSET	ADDRESS LABEL
"WDB"	76+97	RT	6110
"WDB"	79+46	RT	6050
"WDB"	79+55	RT	6006
"WDB"	81+94	RT	5950
"WDB"	82+72	RT	5930
"WPD"	205+33	LT	TO BE DETERMINED



3
66 ROUNDABOUT CHEVRON CONCRETE PATTERN LAYOUT
NTS

WESTPARK ROUNDABOUT CHEVERONS			
CHEVERON	REFERENCE POINT	NORTHING	EASTING
1	A	311840.7052	329942.7600
	B	311841.2988	329946.9609
2	A	311833.8447	329929.0943
	B	311836.4127	329932.4715
3	A	311821.1882	329920.5137
	B	311825.0776	329922.2084
4	A	311805.9458	329918.6928
	B	311810.1882	329918.6443
5	A	311790.9931	329922.2110
	B	311794.9697	329920.7323
6	A	311778.1078	329930.5735
	B	311781.3511	329927.8384
7	A	311768.8048	329942.7970
	B	311770.9335	329939.1271
8	A	311764.4754	329957.4935
	B	311764.9663	329953.2794
9	A	311767.6472	329972.4520
	B	311766.0193	329968.5341
10	A	311777.7149	329983.9611
	B	311774.3821	329981.3356
11	A	311792.1186	329989.0943
	B	311787.9284	329988.4289
12	A	311807.4572	329988.1825
	B	311803.2852	329988.9535
13	A	311821.5912	329982.1667
	B	311817.9249	329984.3017
14	A	311832.8623	329971.7300
	B	311830.1327	329974.9779
15	A	311840.0251	329958.0359
	B	311838.4933	329961.9924




2
66 2.5' CHEVRON DETAILS
NTS


SAND LAKE ROUNDABOUT CHEVERONS			
CHEVERON	REFERENCE POINT	NORTHING	EASTING
1	A	311205.2947	331217.8985
	B	311205.2148	331222.1404
2	A	311202.5114	331202.8137
	B	311204.2138	331206.6998
3	A	311191.2116	331192.4613
	B	311194.9275	331194.5087
4	A	311176.1191	331188.9808
	B	311180.3405	331189.4048
5	A	311160.7651	331190.9250
	B	311164.8705	331189.8544
6	A	311147.0457	331198.0876
	B	311150.5224	331195.6561
7	A	311136.6737	331209.5745
	B	311139.0878	331206.0856
8	A	311130.9441	331223.9514
	B	311131.9941	331219.8407
9	A	311130.5720	331239.4235
	B	311130.1269	331235.2043
10	A	311135.6041	331254.0592
	B	311133.7194	331250.2581
11	A	311145.4120	331266.0312
	B	311142.3230	331263.1229
12	A	311159.5341	331271.9399
	B	311155.3429	331271.2810
13	A	311174.3428	331267.9957
	B	311170.6163	331270.0237
14	A	311187.2987	331259.3734
	B	311184.0225	331262.0689
15	A	311197.2630	331247.5032
	B	311194.8912	331251.0209
16	A	311203.4294	331233.2848
	B	311202.1590	331237.3327

95% DESIGN
JANUARY 2015


PROJECT MANAGEMENT AND ENGINEERING DIVISION																													
05-05 WEST DIMOND BOULEVARD UPGRADE PHASE I: WESTPARK DRIVE TO SAND LAKE ROAD																													
DETAILS																													
SCALE		DATE 1/30/15		GRID		2323 2324 2423 2424		SHEET 66 of 106																					
ACCT. NO.																													
CONSTRUCTION RECORD				VERTICAL DATUM				PLAN CHECK				REVISIONS																	
FIELD BOOKS		BM NO.		LOCATION		ELEV.		DATA		DRAWN BY		CHECKED BY		DATA		DRAWN BY		CHECKED BY		REV		DATE		DESCRIPTION		BY			
DESIGN								BASE						TELEPHONE															
STAKING								TOPOGRAPHY						ELECTRIC															
ASBUILT								PROFILE						CABLE TV															
CONTRACTOR		BASIS OF THIS DATUM						SANITARY SEWER						DESIGN															
INSPECTOR								STORM SEWER						QUANTITIES															
								WATER						MUN. FINAL CHK.															
								GAS																					



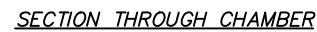
R&M Consultants, Inc.
9101 Vanguard Drive
Anchorage, Alaska 99507
907 522 1707 voice
907 522 3404 fax
www.rmconsult.com



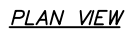
STATE OF ALASKA
49th
Marc Fritinger
No. CE 11889
REGISTERED PROFESSIONAL ENGINEER



MUNICIPALITY OF ANCHORAGE



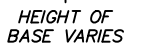
1 *STORMCEPTOR STC 900-S10*
67 *NTS*



1. THE USE OF FLEXIBLE CONNECTION IS RECOMMENDED AT THE INLET AND OUTLET WHERE APPLICABLE.
2. THE 30"Ø OPENING WILL BE POSITIONED OVER THE OUTLET DROP PIPE AND THE OIL PORT. THE 25"Ø OPENING WILL BE POSITIONED OVER THE INLET DROP TEE.
3. THE STORMCEPTOR SYSTEM IS PROTECTED BY ONE OR MORE OF THE FOLLOWING U.S. PATENTS: #4985148, #5498331, #5725760, #5753115, #5849181, #6068765, #6371690.
4. CONTACT A CONCRETE PIPE DIVISION REPRESENTATIVE FOR FURTHER DETAILS NOT LISTED ON THIS DRAWING.
5. THE PRECASTER IS RESPONSIBLE TO CAST THE "FILLET" AT THE PLANT OR MAKE ARRANGEMENTS WITH THE PURCHASING CONTRACTOR TO CAST THEM ON THE JOBSITE. THE CONTRACTOR MUST ALLOW FOR THIS FIELD ACTIVITY IF NECESSARY.
6. DIMENSIONS MAY VARY WITH LOCAL MANUFACTURER, D&S CONCRETE INC., 2140 E. 84TH COURT, ANCHORAGE, AK 99507.



2 BYPASS SDMH (TYPE II)-S13
67 NTS



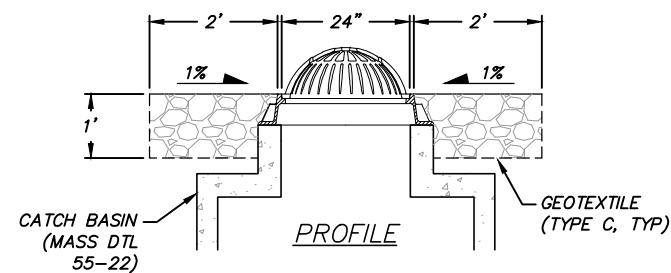
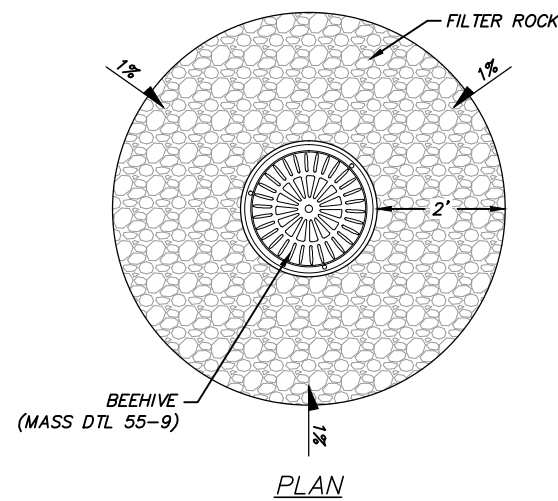
3 TYPE II CATCH BASIN MANHOLE
67 NTS

1. ORIENT CATCH BASIN MANHOLE
ACCESS BEHIND THE CURB & GUTTER.

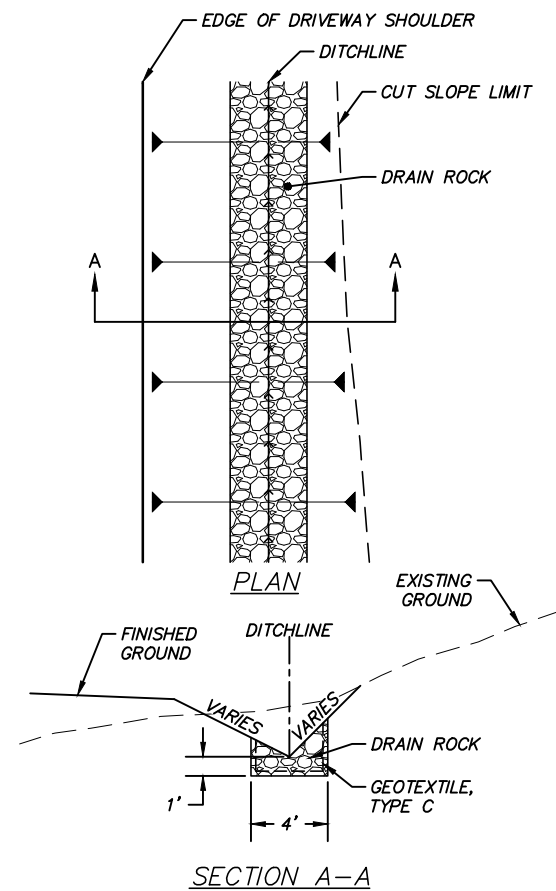
**95% DESIGN
JANUARY 2015**

PROJECT MANAGEMENT AND ENGINEERING DIVISION					
05-05		WEST DIMOND BOULEVARD UPGRADE PHASE I: WESTPARK DRIVE TO SAND LAKE ROAD			
DETAILS					
SCALE	DATE	1/30/15	GRID	2323 2324 2423 2424	SHEET 67 of 106
	ACCT. NO.				

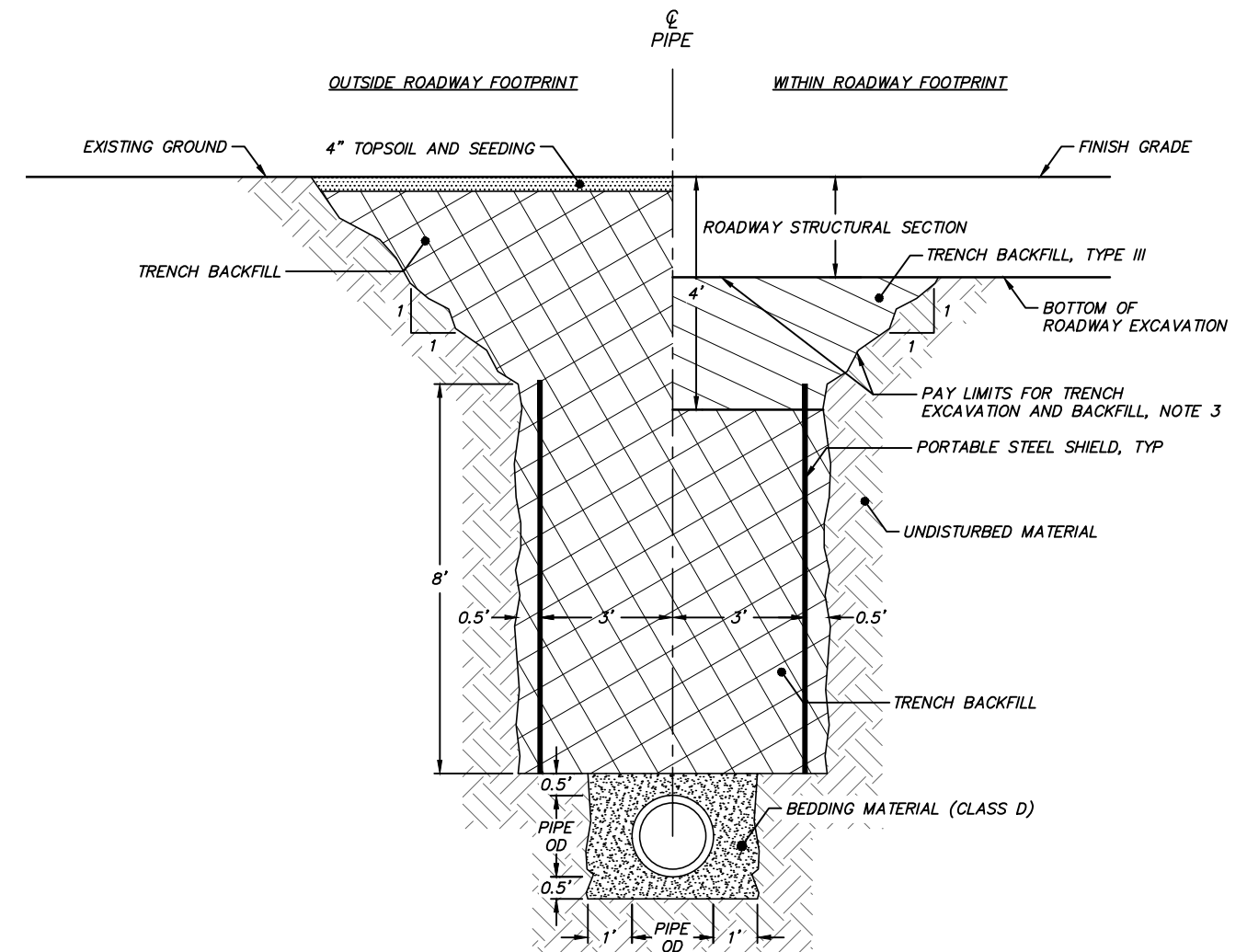
1 ROCK FLUME
68 NTS



3 FIELD INLET
68 NTS



2 DITCH LINING
68 NTS



4
68

TYPICAL TRENCH SECTION – STORM DRAIN


NTS

TRENCH SECTION NOTES:


1. TRENCH EXCAVATION AND SHORING SHALL COMPLY WITH ALL LOCAL, STATE AND OSHA REGULATIONS AND REQUIREMENTS.
2. REMOVE AND PROPERLY DISPOSE OF ALL ORGANIC MATERIALS IN ACCORDANCE WITH MASS SECTION 20.13.
3. SLOPE TRENCH WALLS ACCORDING TO THE SOIL CONDITIONS AND O.S.H.A. SAFETY STANDARDS. INDICATED SLOPES AND DIMENSIONS ARE FOR PAY QUANTITY DETERMINATION ONLY

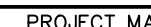
**95% DESIGN
JANUARY 2015**

FIELD BOOKS	BM NO.	LOCATION	ELEV.	DATA	DRAWN BY	CHECKED BY	DATA	DRAWN BY	CHECKED BY	REV	DATE	DESCRIPTION	BY	REV	DATE	DESCRIPTION	BY
DESIGN				BASE TOPOGRAPHY			TELEPHONE ELECTRIC										
STAKING				PROFILE			CABLE TV										
ASBUILT				SANITARY SEWER			DESIGN										
CONTRACTOR	BASIS OF THIS DATUM			WATER SEWER			QUANTITIES										
INSPECTOR				GAS			MUN. FINAL CHK.										
CONSTRUCTION RECORD				VERTICAL DATUM				PLAN CHECK				REVISIONS					



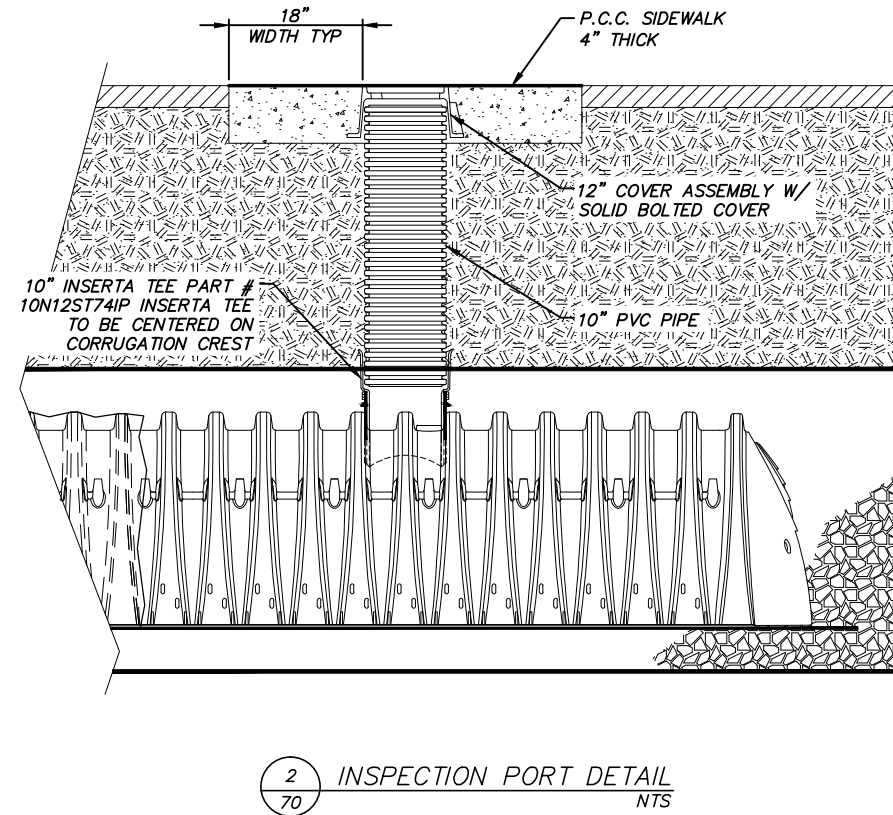
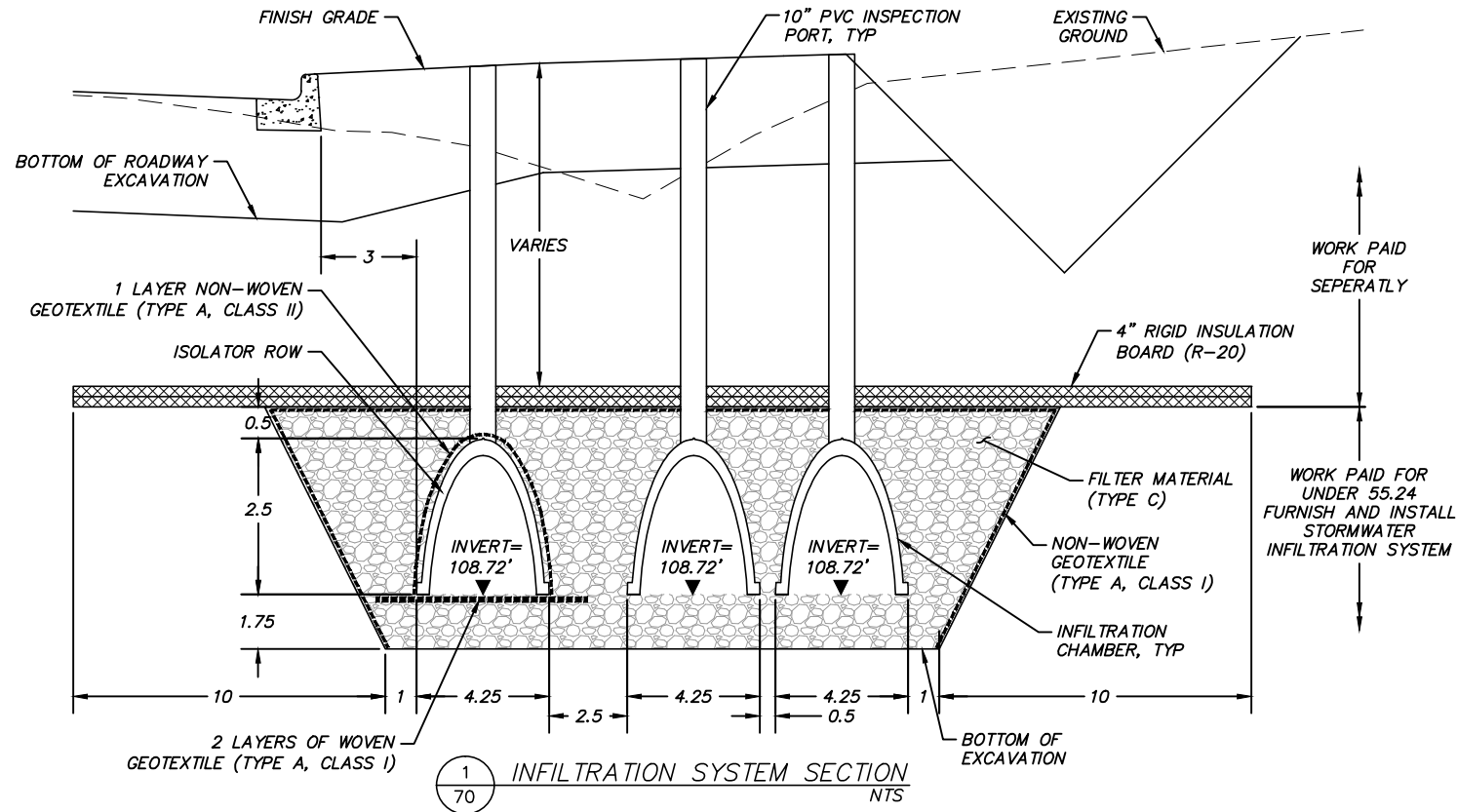
R&M Consultants, Inc.
9101 Vanguard Drive
Anchorage, Alaska 99507
907 522 1707 voice
907 522 3404 fax
www.rmconsult.com





PROJECT MANAGEMENT AND ENGINEERING DIVISION	
05-05	WEST DIMOND BOULEVARD UPGRADE PHASE I: WESTPARK DRIVE TO SAND LAKE ROAD
DETAILS	
SCALE	DATE 1/30/15 GRID 2323 2324 ACCT. NO. 2423 2424
SHEET 68	of 106




Plotted: 1/30/2015 9:59 AM File Location: Z:\project\1317.01 - West Dimond Blvd\Engineering\Acad\1317-H-Details.dwg



NOTES:

1. INFILTRATION SYSTEM SHALL BE STORMTECH DC-780 OR APPROVED EQUAL.
2. INFILTRATION SYSTEM SHALL BE INSTALLED PER MANUFACTURER'S RECOMMENDATIONS AND IN ACCORDANCE WITH PROJECT SPECIFICATIONS.
3. INSPECTION PORTS, INSERTA TEE, COVER ASSEMBLY, AND CONCRETE COLLAR ARE INCIDENTAL TO THE BID ITEM 55.24.

95% DESIGN
JANUARY 2015

														 R&M Consultants, Inc. 9101 Vanguard Drive Anchorage, Alaska 99507 907 522 1707 voice 907 522 3404 fax www.rmconsult.com		 Marc Frutiger No. CE 11888 REGISTERED PROFESSIONAL ENGINEER		 MUNICIPALITY OF ANCHORAGE		PROJECT MANAGEMENT AND ENGINEERING DIVISION			
05-05 WEST DIMOND BOULEVARD UPGRADE PHASE I: WESTPARK DRIVE TO SAND LAKE ROAD																							
INFILTRATION SYSTEM DETAILS																							
SCALE		DATE 1/30/15		GRID 2323 2324 2423 2424		SHEET 70 of 106																	
		ACCT. NO.																					
FIELD BOOKS		BM NO.	LOCATION		ELEV.	DATA	DRAWN BY	CHECKED BY	DATA	DRAWN BY	CHECKED BY	REV	DATE	DESCRIPTION		BY	REV	DATE	DESCRIPTION		BY		
DESIGN						BASE			TELEPHONE														
						TOPOGRAPHY			ELECTRIC														
STAKING						PROFILE			CABLE TV														
						SANITARY SEWER			DESIGN														
ASBUILT						STORM SEWER			QUANTITIES														
CONTRACTOR		BASIS OF THIS DATUM				WATER			MUN. FINAL CHK.														
INSPECTOR						GAS																	
CONSTRUCTION RECORD		VERTICAL DATUM				PLAN CHECK				REVISIONS										CONSULTANT		SEAL	